

Early Harvest Is Essential In Making Dairy-Quality Grass Hay

MARVIN HALL
Penn State
Forage Specialist

The use of perennial grasses for high-quality dairy feed throughout much of Pennsylvania is common. Unfortunately, the quality of the harvested forage is less than dairy quality.

The key factor in harvesting dairy-quality forage is harvest management.

Recent research conducted by Dr. Jerry Cherney at Cornell University showed that plant development varies with grass species, but forage quality decline was consistent across all species. In other words, the forage species is not as important as timely harvest in obtaining high-quality forage.

Reeds canarygrass, brome grass, tall fescue, and timothy were harvested at various stages of development and tested for quality.

According to Dr. Cherney, the research showed that fiber digestion and other quality parameters decline with increased maturity. The magnitude and rate of quality decline with maturity are much more important than quality differences between individual species. Cherney also suggested that producers should consider harvesting their pure grass stands in the spring for dairy feed before they harvest alfalfa, in order to produce acceptable grass quality.

In summary, the use of cool-season grasses for dairy-quality feed requires harvesting the grasses earlier than normal. Delay in grass harvest and not grass species is the major factor in producing low quality grass hay or silage. Consider harvesting grasses before you would normally harvest alfalfa to obtain high quality forage that is suitable for dairy animals.

**QUALITY HAY EQUIPMENT
TO PRESERVE QUALITY HAY CROP**



CUMMINGS & BRICKER, Inc.
WHOLESALE DISTRIBUTORS
100 Stover Drive
Carlisle, PA 17013
717/249-6720
100-120 Lehigh Ave. - P.O. Box 928
Batavia, New York 14021-0928
716/343-5411
CALL 1-800-222-8969 FOR DEALER NEAREST YOU
Now Available At: Cummings & Bricker's E-Z Flex Financing. Payments Are Customized to Your Budget!

**ASK US ABOUT EZ FLEX
FINANCING PROGRAM**
WAIVER OF PAYMENTS UNTIL NOV. 15, 2000
or LOW RATE FINANCING



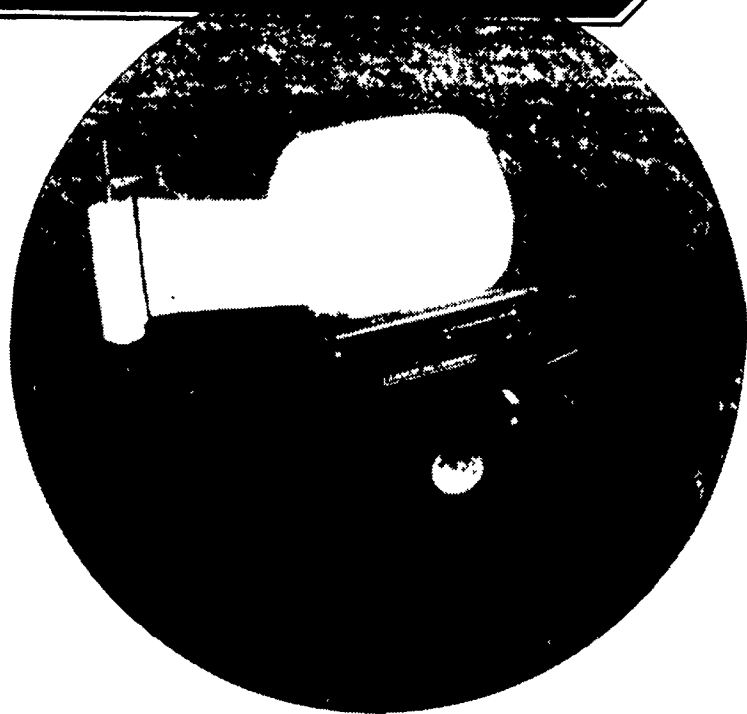
0%¹² MONTHS 5.75%²⁴ MONTHS 7.75%³⁶ MONTHS 8.5%⁴⁸ MONTHS

TANCO AUTOWRAP

**THE WRAPPER
THAT WRAPS
BALES
OTHERS WON'T**

A complete range of Round,
Square & Rectangular Wrappers.

Patented advantages like the unique "Deep Cradle" continuous full width belt, and fully supported turntable where four polyurethane wheels provide Tanco's renowned even and balanced operation, even with overweight and misshapen bales. Quality wrapping and quality machines that has made Tanco among the World's leading manufacturers.

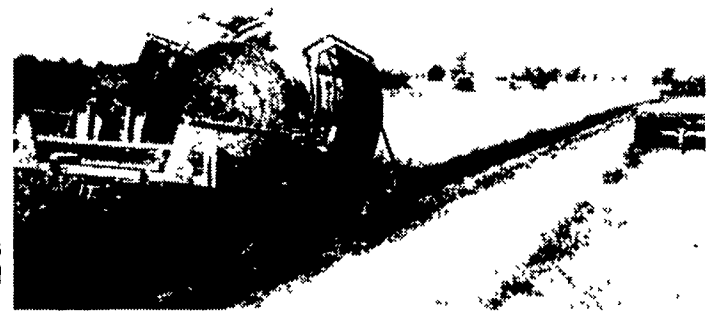


It takes a quality product to do quality work.

TUBE-LINE BALEWRAPPER

For optimum speed and efficiency patented Tube-Line Wrappers are the answer! Tube-Line Wrappers wrap a continuous row of bales. The airtight application of stretch wrap film retains moisture balance as haylage matures and prevents air infiltration. The shrink wrap also prevents wind damage and accommodates variation in bale size and shape without air gaps.

Long stem silage is better used in the animals digestive system. Feeding high quality haylage from wrapped bales can reduce or eliminate feeding grain while retaining or increasing weight gains or milk production.



Tube-Line wrappers for all round bales or large square bales are available in either manual or fully automatic models.

AG WRAP BALE WRAPPER



The EC04-5 Pull Behind Wrapper
For Use On Small Tractors

Wraps Bales up to 5 ft. x 5 1/2 ft.

- 3-Point Hitch
- Hydraulic requirement 4 GPM - 2 remotes
- Pre-stretcher for plastic
- One-man operation
- Wrap on the move
- Transport bales to storage
- Picks bale up, wraps them all hydraulically
- Built in U.S.A.