

Public Auction Register

Closing Date Monday 5:00 P.M.
of each week's publication
Internet Sale Register will be updated
every Sat. at 2:23 P.M.

SAT APR 15 - 10AM Wood's 26th Annual Consignment Sale at the Gordon Wood Farm on Rt 15 across from Fred's Woodshed Wood's Auction Service

SAT APR 15 - 10AM Real estate, household goods & misc items From Rt 23 in New Holland take Ennmmer Ave S approx 2 miles to Hill Rd turn left to sale on right by Martin B & Thelma K Martin Mel Hoover, auct

SAT APR 15 - 11AM Hakes Dairy Dispersal On Walt Berger Farm, Cattle, machinery Hakes Dairy, Steven & Sheila Hakes, owners Roy Hottle & Sons, aucts

SAT APR 15 - 11AM Public Estate Auction Farm Machinery, antiques, slauhger house contents 132 Reum Rd., Callicoon, NY John Regan, Tom Randt aucts

SAT APR 15 - 11AM Branchport (Yates Co) New York on the Guyanoga Valley Road across from Valley Inn Lawrence McMinn Farm Machinery Retirement Auction Pirring Auctioneers, Inc

SAT APR 15 - 12PM N Cornwall Twp, Lebanon Co, Pa 2170 Colebrook Rd., Leb Nelson L Ebersole, auct

SAT APR 15 - 2:30PM Farm Toy Auction, Millinburg High School, 1st & Market St., Millinburg Pa Bill Wolfe, auct

SAT APR 15 - 2:30 PM 8th Annual Millinburg Young Farmers Farm Toy Show & Auction

COIN AUCTION APRIL 18, 6:00 PM

RIDGE FIRE CO. ON RT. 23,
THREE MILES EAST OF RT. 100
KATHY MAURER, AUCTIONEER
MORGAN DOLLARS, SILVER HALVES, QUARTERS,
DIMES, NICKELS, AND CENTS to be sold individually and in large lots
A COUPLE OF 2-1/2 DOLLAR GOLD PIECES
SOME LARGE CENTS, HALF CENTS, HALF DIMES,
FLYING EAGLES, INDIAN CENTS, AND OTHER EARLIER COINS

LARGE COLLECTION OF COIN
COLLECTING BOOKS
PREVIEW: TUESDAY, APRIL 18th at 3:00 PM
TERMS: CASH or GOOD PA CHECK with photo ID
DIRECTIONS: FROM RT 100 TURN EAST ON RT 23 TOWARD PHOENIXVILLE FIRE HALL IS 3 MILES ON RIGHT

Kathy Maurer Auctioneer & Gemologist
Lic #AU003006L
610-970-7588 Office 610-495-5504 Day of Sale Only

Held in Millinburg High School, Millinburg, Pa

SAT APR 15 - 3PM Consignment Auct For Lewrenza Byrd Equipment Pete Richardson Auct Service

SUN APR 15 - Leesport Farmers Market Social Hall Rt 61 Leesport, Pa Toy Sale Gallagher Productions 610-562-9404

SUN APR 16 - 12 Noon Antiques, guns, sports memorabilia, piano, Civil War relics, tools, clocks United Auctions Center, 2235 Blue Ball Rd., Elkton, Md Wm D Farmer, auct

REAL ESTATE AUCTION Juniata County Farm

Friday, May 5, 2000
12:00 Noon

Located in Tuscarora Township, 15 miles south of Port Royal, PA and 4 miles north of East Waterford along Route 75.

GENTLEMAN'S FARM

Farm consists of 50 acres with 1,322 feet hardtop road frontage along Route 75. This farm offers approximately 35 acres of hi-tensile fenced land with continuous running water, suitable for grazing or farming, soil type is BUB. The remaining 15 acres is wooded ridgeland offering Pennsylvania wildlife whitetail, turkey, etc.

Buildings include a two-story farmhouse with remodeled country kitchen, new wiring, plumbing, sewage, windows and siding. Dwelling also has gas-wood heat, 3 bedrooms, full bath and full basement. Other farm buildings include a large bank barn, two-story frame chicken house and other small outbuildings.

NOTE: Owners are relocating and must sell. This property is suitable for organic farming and offers southern exposure to the Tuscarora Mountain. A must-see located in the beautiful Tuscarora Valley!

REAL ESTATE TERMS: 10% down payment, balance due in 30 days.

REAL ESTATE SHOWINGS: Saturday, April 8, 15, and 22 from 12:00 noon until 3:00 p.m. Real Estate inspection phone 717-734-3069.

Owners:

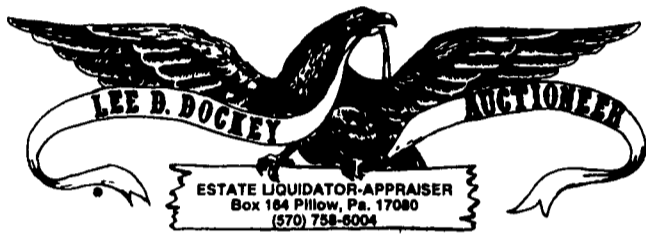
RANDY & KAREN HESS

Honey Grove, PA • 717-734-3069

Bryan D. Imes, Auctioneer

AU-001656-L
717-527-2449

SELLING MODERN FARM MACHINERY
AND TOOLS AT 10:00 A.M.



PUBLIC AUCTION

ESTATE OF RUTH I. STUTZMAN

Saturday, April 22, 2000 8:00 A.M.

LOCATION: App. 40 miles north of Harrisburg, PA, along Route 209, in Lykens, PA, at 404 Main Street

REAL ESTATE

HALF OF A DOUBLE 2 1/2 STORY FRAME HOUSE W/ALUM. SIDING known as 404 Main Street, Borough of Lykens, Dauphin County - LOT SIZE: 25' (+/-) Frontage, 140' (+/-) Depth -First floor has KITCHEN (W/BUILT-IN STOVE, MICROWAVE & DISHWASHER), DINING ROOM, DOUBLE LIVING ROOM & DEN; Second floor has 3 BEDROOMS & BATHROOM; CEMENTED BASEMENT; EFM OIL STEAM HEAT - STORAGE SHED & HALF OF A DOUBLE GARAGE situate to rear of lot. For additional information or inspection phone 570-758-6004. TERMS: 10% Down. Further terms & conditions to be given when real estate is offered at 11:00 A.M.

ANTIQUE & COLLECTIBLES

Mahogany Furniture such as Duncan Phyfe China Cabinet, Tier Stand & Bookshelf w/Glass Door; Walnut Victorian marble - Top Stand (marble broken); (2) 4 Stacking Oak Bookcases; Nightstand w/Drawer; Round-Top Trunk; Painted Washstand; School Desk; Painted High Chair; Brass Clotheshree; Glass Butter Churn; 3-Footed Early Wrought Iron Fireplace Fry Pan Signed W. Foster; No. 10 Griswold Muffin Pan; Asst. of Quadruple Plate; Sterling Stieff Pattern Service for 12+ Flatware; Sterling Candlesticks; Franklin Mint Apostle Spoons; Tin Christmas Tree Dec.; Alabaster Table Lamps; B&G Porcelain Vase; Royal Doulton Statues; Dunhaven Clock; 3-Pc. Goebel Nativity Set (Joseph damaged); Carnival Glass; Yellowware Pitcher; Ned Smith Books (PA Bird Life & PA Mammals) & Glassware; Claire Pattern Noritake China Set; Asst. of Early American Pattern Fostoria; Belleek Cups, Saucers, Creamer & Sugar; Asst. of Lenox; Collections of the Following: Angels (Wooden, China, Stone, Etc.), Madonnas (Wooden, Franklin Mint, Crystal, Sebastian, Etc.), Pewter Fishing Statues, Gorham Statues (Fish Finders, Fishing, Wet Sport, Goin Fishing), Plates (Delft, Frankoma, Fenton, Stick Spatter, Rockwell, Wedgwood, Etc.), Santos (China, Bells, Cookie Jar, Schmidt, Etc.), Oriental Items (China, Wooden, Metal, Etc.), Franklin Mint Paperweights - Cameos in Crystal Honoring Great Leaders of History, Large Easter Eggs; Etc.;

HOUSEHOLD ITEMS

G.E. 17 cu. ft. Refrigerator; Frigidaire Upright Freezer; G.E. Auto. Washer & Dryer; Zenith Floor-Model Stereo; Zenith System 3 Color TV; Sears Kenmore Elect. Sewing Machine; 9-Pc. Georgetown Queen Anne-Style Dining Room Set; Corner Round-Glass China Cabinet; 2 Bookcases w/Sliding Glass Doors; Lighted Wall China Cabinet; Wall Round-Glass China Cabinet; Octagon Floor Showcase; Sofa Bed; Sofa; Misc. Uphol. Chairs; Maple 4-Pc. & 5-Pc. Bedroom Set; 5-Pc. Dixie Bedroom Set; Wooden Wardrobe; Metal Desk & 4-Drwr File Cabinet; Floor & Table Lamps; Misc. Dishes, Pots, Pans & Sm. Appliances; Etc.

TOOLS & MISC. ITEMS

Stanley Miter Box; Craftsman Saw - Wrenches, Etc.; Misc. Hand Tools; Fishing Reels; Hercules Shop Vac; Scott's Lawn Spreader; Lawn Boy 22"-Cut Rotary Mower; Lawn Hose Reel; Misc. Garden Tools; Cement Lawn Ornaments; 4-Pc. Metal Lawn Set; Metal Shelving Units; Lykens Dairy Milk Box; Etc

TERMS: Cash. Personal checks accepted w/established account or prior approval.

Gregory M. Kerwin, Attorney

Beverly Ferguson & Kathy Sadden, Executrices

Lee D. Dockey Auction Service #AU229L (570-758-6004)
Dockey-Romberger #AU1683L & Deppen #AU1957L

PUBLIC AUCTION

Saturday, April 22, 2000 at 9:00 am

Located at R-OWN Dairy Building, One Mile East of Matamoras, PA, Off Rt. 225 Approx. 15 Miles NE of Harrisburg, PA. Take Rt. 22-322 W. to Dauphin, PA Then Rt. 225 N. Towards Halifax, PA to Matamoras, PA. Turn E. on Matamoras Road, One Mile to Auction. Watch for Auction Sign Along Rt. 225.

CARPENTER & MECHANICAL TOOLS

DeWalt (222) Table-Saw, Power King (8") Table Saw w/3/4 HP Elect Motor, Delta (36" Throat) Wood Lathe, BD (3-1/4") Planer, Sears (103) Band Saw, Craftsman (49) 1/2 HP Floor Drill Press, 4" Planer, Wood Lathe & Table Saw Comb On Stand, Vega Enterprises 10 Ton Press w/Scale; Engine Stand on Wheels, BD Dual Elect Bench Grnder on Stand, Fairchild (4-1/2") bench Grnder, BD (Type I) Laminate Trimmer, Craftsman (1/2") Elect Drill; Cummings (1/4" & 3/8") Elect Drills, Skil (1/2") Elect Hammer Drill, BD (8 4) & Skil (2130) 3/8" Cordless Drills, Porter Cable (3") Elect Belt Sander, Chicago (945) 4" & BD (1/2" Elect Disk Grinders, Air Disk Grnder, Craftsman & Dremel Elect Sanders, Circular Grndstone on Stand w/Elect Motor, Thor (56) 1/2" Elect Impact Gun, Craftsman Router, Porta Cable (4") & Marx (7800) 7-1/4" Circular Saws, Shop Mate (1860), Master Craft Saber Saws, Weller Elect & Cordless w/Iso Tip Soldering Guns, Thompson Elect Roto Paint Remover Tool, Craftsman Elect (wet-sharp) Machine; Parker (974) 4" & Eve (35) Bench Vices, Bench (3") Two Way Cross Vice, (8) Steel Bar Clamps, (4) Wood Screw Clamps, C Clamps up to 10" Spread, Hyde Alum Giant Square & Other Squares, Elliot (42") & USA (498-A) Slide Rules; Wooden & Alum Levels; Lufkin Rules & Tapes; Hirsch (4' & 5') Alum. Cutting Edge Tools, Miter Box & Saw; Carpenter Saws, Miller Falls (900) & (K S), Stanley Bailey (#3-8 & 2207) Craftsman & Other Wood Planes; Masonry Tools, Fuller Brick Carrier, Steel Calhbers of All Sizes, Micrometers, Brace & Bits; Craftsman Precision Drill; Expansion & Extension Drill Bits, Numerous Elect Drill Bit Sets; Craftsman (14) Wood Bit Set; Reduced Shank Drill Bits Up To 1" in Dia, Grissly Carbide Tip Router Bits Craftsman & Steel Kraft (sets of 8); Wood Chisels, Ridged (112) Pipe Cutter & (BC-4A) Chain Vise, Ridged 20" Bench Vise, Large Bolt Cutter, Pipe Bender, Ridged Pipe Wrenches Up To 24"; Reed & Toledo Pipe Threader Sets, National (40 piece) Tap & Die Set, Hargrass Leather Washer Cutter, Craftsman (1/2") Dri.e Torque Wrench; Bearing & Gear Pullers, Welders Helmet & Tools, Arco Welding Rods, Trump (RCO-1) Volt Olm Meter, Western (O) Meter, Micronta (18) Range Tester, Penske Analyzer; Nut Driver Sets; Many Carpenter & Mechanical Tools as Hammers, Hatchets, Screwdrivers, Adj Wrenches, Pliers Chisels, 1/4 - 3/8 & 1/2" Drive Socket Sets; Set Deep Well Sockets, Central (1/2") Drive Impact Sockets, Many Open & Box End Wrenches & Others Stuhl (D-41-AV) 16" & (#015) Gas Chain Saws; Ryobi & Craftsman Gas Weed Wackers, (2) BD Elect Hedge Trimmers, GARDEN TOOLS, ANTIQUES & COLLECTIBLES

HOUSEHOLD GOODS

AUCTIONEER'S NOTE: A fine line of tools & equipemnet Sale will begin with small tools & collectibles Large items at approx 1:00 p.m Sale under roof Brng lawn chairs

TERMS: Cash or approved check

OWNERS

1 State moved out of Harrisburg, PA

AUCTIONEERS:
David Deibler 896-8530 AU001213-L
Ed Shoop 896-8305 AU000842-L
37 Sycamore Ave.
Halifax, PA 17032



PUBLIC AUCTION

SAT., APR. 22, 2000
@ 9:00 AM

Loc.: 6 Plank Ave., Willow Street, W Lampeter Twp., Lancaster Co., PA (Dir: From Lancaster, take 272S, just past Kendig Square, L on KENDIG RD., R on Barbara Ave., L on Plank)

REAL ESTATE: Brick Ranch House w/2 BR's, 1-1/2 Baths, Kitchen, Din. Rm & Liv Rm. Full basement, sun porch add., concr back porch, lg 2-car gar & 10'x20' det shed Lampeter-Strasburg schools 10% down, settle 40 days R.E. SOLD AT 2:00 PM.

APPLIANCES, FURNITURE, BOOKS, GLASS & CHINA, LINENS, ETC.

GUNS: Winch Mod 270 22-cal pump, (2) Daisey BBs Some hunt clothes, duck decoy

ANTIQS. & COLLECTS.: IH Ferguson clock (as is), Stereoview (in box) & color cards TIN, Wash boiler, Manor View milk box, water can IRON: skillets, sadrons, Wistler pump trgh, pump, deco & other milk cans GRAY GRANITE, dipper, coffee pot WOOD, Canes, dry rack, croquet set, sm. red wheelbarrow, prong rake, block plane, (2) chick crates BRASS spr scales, COPPER sprayer CLOTH SEED & FEED BAGS, BURLAP BAGS, LOT ANIMAL FIGS, Tobacco spear, Records, meat & X-cut saws, hook rugs, 1940's child's clothes

TOYS: Approx 50 WINROSS TRUCKS, ERTL John Deere, FEW FARM TOYS, HESS TRUCKS

POWER TOOLS & ATTACHS.: Table Saw, Shaper, Arm Saw, 6" Jointer, Band Saw, Router/Table, Dust Collec., 14" 5-spd drill press, lathe, saws, 12" planer, grndr, drills, sanders, (2) Air Compress, Skil saw, battery chgr, sand/grnd, shaper attachs, cutters, bits, lathe tools, caliper set, Beard tools Hand Tools scribe, plane, dremmel tool, grndr, come-along, wrench set, adj sq., C-clamps, tin snips, vises, mitre saw, jg, wood & pipe clamps, parts bins, toolboxes, lot Walnut & Cherry lumber

LAWN & GARDEN: Ariens mulch & Hahn mowers, leaf blower, weed eater, chain saw, blade sharp, hedge trim, gas cans, peach baskets, shovels, sledge, dig iron, crow bar, wedges, misc. motors, log chains, etc.

FOOD SERVED, NOT RESPONSIBLE FOR ACCIDENTS DAY OF AUCTION.

Auction By

MRS. HENRY (VERNA G.) SOUDERS

MARK EABY, Atty.
PROBST FAMILY AUCTION
ERIC R. PROBST, Auct.
AU-001856-L, 464-3700



PUBLIC AUCTION

OF HOUSEHOLD GOODS,
ANTIQUES,
3 HANDMADE DOLL HOUSES,
SHOP EQUIPMENT,
TOOLS & J.D. RIDING MOWER
TUE., APR. 18, 2000
Sale at 10:00 A.M.

Located at 431 Friendship Ave., Lancaster At light where 501 & 222 meet turn east on Pleasure Rd., left on Esbenshade Rd., right on Friendship to sale, Lancaster, PA.



Auct's Note: Last Chance to buy Handcrafted Doll House by Ben Brubaker. Ben is retiring

Log Cabin #96, Frame #97 & 2-1/2 Story Brick #100, Wooden Car, Wind Wheel Lawn Ornament

ATTN: Furniture Sold First At 10:00 A.M.

Spoon Carved Marble Top Washstand, Spoon Carved Marble Top Dresser, Walnut Spoom Carved Bed, 4 Cane Seated Chairs, Large Beveled Plated Hall Mirror, Oak Rocker, Sofa, Rocker Recliner, Duncan Phyfe Dropleaf Table w/2 Boards, Grandmother Clock, Schoolhouse Type Clock, Cuckoo Clock, Pictures, Cedar Wardrobe, Swivel Chair, Double Metal Wardrobe, Sylvania Console TV, 4-Drawer File Cabinet, Pic-nic Table & Benches, Lawn Chairs, Double Seat Lawn Swing.

APPLIANCES - Frigidaire Side by Side Freezer Refrigerator, Dehumidifier, Elect. Heater, Kozy Stove Gas Heater, 2 Fans, Radios, Hoover Upright Sweeper, Bridge Lamp, Dress Master Sewing Machine - Portable, Plymouth Shelf Clock, Linens, Bedding, Comforter, Coverlet, Some Glassware, American Pattern, Fostoria Cake Stand & Candles, Toilet Set, Cooking Utensils, Hat Rack w/Porcelain Knobs, Copper Model Airplanes, Music Boxes, HO Train Set w/5487 Engine, Trolley Car, Life Like Tender 2126, Track, Transformer & Accessories

EQUIPMENT & TOOLS - WH 7-1/2" Planer 1 HP Motor, 4" Jointer 1/3 HP, 10" Craftsman Radial Arm Saw 2.5 HP, 3" Lathe, Router, Extra Blades, Delta 14" Band Saw, Delta 10" Table Saw, Craftsman Belt Sander & Sabre Saw, Rockwell 4 Speed Drill Press, 4" Belt/8" Disc Elect. Sander, Hegner Elect Jigsaw on Stand - Variable Speed, Hyd Adjustable Table, Dust Collection System, Shop Vacuum Air Cleaner System, Wet & Dry Shop Vac, Double Wheel Bench Grnder, Molding Head, Router Blade, Carbide Tip Blades, Brace & Bits, Drill Press w/Bench Vise, 1/4" & 1/2" Drills, Pipe & C-Clamps, Elect. Stapler & Sander, Socket Sets, Pipe Wrench, Metal Bits, Hand & Wood Tools, Shop Organizers, Portable Air Compressor, Elect Cords, Misc Dry Lumber - Cherry & Walnut

GARDEN TOOLS & SUPPLIES - John Deere GX75 Riding Mower, Craftsman 22" Snow Blower, Echo Leaf Blower, Weed Eater, Lawn Seeder, WMC 680 High Pressure Washer, Lawn Cart, B & D Workmate Table, B&D Hedge Trimmer, Green Thumb Sprinkler, Battery Charger - 6 & 12 Volt, 1/4 & 1/2 HP Elect. Motors, Gas Grill, Metal Toolbox, 16' Extension Ladder, 5' Aluminum Stepladder Many other items not mentioned

Terms by

BENJAMIN E. BRUBAKER

Aucts
Robert E., Jeffrey R & Michael L Martin 656-7770
AU000580 L Randall L Ranck
Lunch Available No Out of State Checks