

PUBLIC AUCTION
VALUABLE REAL ESTATE
RESIDENTIAL LOT 27'x74' BARN/BLDG.
TOOLS - FARMALL CUB -
WOODWORKING EQUIP.
LUMBER - PERSONAL PROPERTY
SATURDAY, APRIL 22, 2000
9 AM - Real Estate 1 PM

LOCATION: Oak St., Schaefferstown, PA Rt 501 North thru Schaefferstown Turn right on Hess Gas Station on 501 N turn right onto Oak St to property on right Heidelberg Twp., Lebanon County.

Real Estate consists of Residential Zoned lot 130'x142' w/2 story frame bldg 27'x74' w/100 Amp elect Lot is level w/fruit trees Public water is available Quiet side street location Terms 10% down, balance 60 days Inspection by appointment For land plotting, brochure, financing call auctioneers at 717-445-4309 or 717-733-1006

Woodworking Equip. - Tools

Craftsman 13" Band Saw, Craftsman 6" Jointer, (2) Craftsman 12" & 10" Table Saws, Craftsman Table Floor Drill Presses, 6" Belt Sander w/Stand, 36" Wood Lathe, 48" Belt & Disc Sander, 6x12 Planer, Rockwell Trim Saw, Craftsman Saber Saw, Stanley Mitre Saw, Craftsman Sander/Polisher, Craftsman 6" Circular Saw, Rockwell 6-1/4" Circular Saw, Craftsman 4" Belt Sander, Stanley Router/Planer Combo, Wen Elect Plane, Craftsman Router, Craftsman Shaper, 16" & 8" Scroll Saws, Craftsman 400 Workmate, 4 Heavy Duty Work Benches, Bench Grinder, (2) Lg Wetstones on stand, (3) Antique Drill Presses, HD Leather Sewing Machines, Westone w/Motor, Dustless Sander, Bench vises, 1/2" & 1/4" Elect Drills, Lots Hand Planes, Furniture Clamps, Lots C-Clamps, Elect Paint Sprayer, Farmer's Tools, Homelite Chain Saw, Lots Hand Tools & Hardware.

Farmall Cub Tractor w/Cult., 2-Way Plows, Snowblade, Sickle Bar Mower - Orig. & ex. Cond.

Simplicity 12 HP Lawn Tractor, 36" Deck w/Bagger, Work Horse Lawn Tractor w/New Eng. 32" Deck, Simplicity 8 HP 2-Stage Snowblower, Craftsman 5 HP Rototiller, Mighty Mac Tree Sprayer, Walk Behind Garden Tractor w/Cult., Blade & Disc Harrow, (2) Horse Drawn Culti., Lawn-Boy 21" Self-prop Mower, N.H. Saw Buck, (2) Trailers, Steel Wheelbarrow, Corn Sheller, Cider Press w/Grinder, A W Denlinger Hammermill, (2) Antique Horse Drawn Row Makers, Potato Plow, Platform Scales, **BUTCHER ITEMS:** Butcher Kettles, Butcher Stove, Saus Press, Lard Press, Meat Grinder on bench, Wooden Scalding Trough, Lg Wooden Butcher Benches

Walker Floor Jack, Cast-iron Implement Seat, Hay Forks, Wooden Buckets, Beam Scales w/Wts, Tin Lutz Sign, Lg Cast-iron Grate, Wooden Crates & Boxes, Wooden Tubs, Hand Augers, Lg Anvil, Stake Anvil, Single & Double Trees, Lg Barn Hinges, IH Tractor Toolbox, (3) Air Compressors, 2 Shop Vacs, **WALNUT LUMBER & OTHER:** Wooden Rakes, Ladder jacks, Blacksmith Tongs, Strawberry Boxes & Crates, Milk Can, Apple Picking Ladder & Other Alum & Wooden Ext Ladders, Stepladders, (3) Come-a-longs, Lots Chains, Lathe Tools, Drill Bits, Digging Irons, Tire Breaker, Old Hand Cultivators, plus numerous other items

NOTE: This is only a partial list of items Possibility of 2 auctioneers selling simultaneously Auction to begin w/sm tools followed by larger items Farmall Cub to be sold approx 1 PM Terms are cash or Pa check Food stand

Terms By:
LEROY R. & EDNA M. SHAAK
 717-949-3322
 Thomas Cooper, Atty.

Auction Conducted By
 Randal V Kline, Lloyd Kreider &
 Roy Good, Jr., Auctioneers
 Lic #2116, #499, #513
 717-445-4309



PUBLIC AUCTION
OF
STONE FARMHOUSE ON
14.5 ACRES
Thursday, June 1st
At 6:00 P.M.

Location: 932 Pineland Road, Birdsboro, Exeter Twp, Berks Co., PA.

From Reading take Rt. 422E, turn left on Pineland Rd., go approx. 1 mile look for sign, turn left, property is at end of lane.

REAL ESTATE CONSISTS OF: 2 1/2 story stucco over stone circa 1850's farmhouse. 1st floor has living room w/stone FP, Bas relief plasterwork on walls & ceiling, large eat-in kitchen w/rear stairway to upper level. 2nd flr. has 4 BR's & bath; attic storage, HW floors thruout, deep window sills & beamed ceilings. Full basement w/outside entrance, cement floor, sump pump, oil hot water heat w/(2) 275 gal. oil tanks. Large L-shaped, screened porch overlooking meandering stream & gazebo type hand dug stone wishing well Circular drive w/arched entrance at front door. 2 car detached stone/frame garage.

Unique, secluded property on approximately 14.5 acres, mostly wooded with Owatin Creek flowing through.

OPEN HOUSE: Saturday, April 29th & May 6th from 1-3 PM or by appointment.

TERMS: 10% day of sale; settlement on or before July 14, 2000.

Terms by:

ALMA B. LUTZ ESTATE
 George Grant, Executor
 Lewis Buchanan, Executor
 Attorney William F. Colby, Executor



Merle Eberly AU-2417-L • Alvin Horning AU-0433-L
 Elton Horning AU-0434-L
 Route 23 Morgantown, PA 19543 (610) 286-5183

GOSPEL EXPRESS
BENEFIT AUCTION WEEKEND



Dairy & Beef Cattle Auction
Thursday, April 27, 7:30 PM

Supper & Sing

Friday Evening, April 28

Pig Roast Supper - 5:00 PM (Carry Out Available)

Singspiration - 6:30 PM

Gospel Express Team • The Antrim Chorus

18th Annual Benefit Auction

Saturday, April 29

7:00 AM ~ Breakfast

9:00 AM ~ Auction

11:00 AM ~ Quilts

2:00 PM ~ 3-D Pictures

1:00 & 3:00 PM ~ Quality Oak Furniture

Sheds & Lawn Furniture • 8x10 Playhouse • Quality Wood Furniture

4-Piece Cherry Bedroom Suite & 4-Piece Oak Bedroom Suite

52" Oak Table w/6 Chairs • 2 enclosed trailers - 7 x 14 & 6' x 12

1 open trailer - 7' x 12 • 6-year-old gelding

Gospel Express Pillows, Matching Tote Bags, and Afghans

Gas BBQ Grill • Glider Chairs • Cuno Cabinet

Special Handcrafted Lord's Prayer Wooden Plaque

Dozens of Quilts • 12' x 24' Single Garage with Overhead Door

Lots of Crafts • Flowers • Trees & Shrubs

BOSCH Kitchen Machine • and Much More

Pennsylvania Dutch Cooking

Special Music by Gospel Express after Auction

For more information call 717-768-7115

Gospel Express Evangelistic Team is dedicated to preaching the Gospel around the world in prisons, churches, communities, and third world countries.

Auction held at Mel's Stables between Intercourse and New Holland. Follow New Holland Road north from Route 340 or south from Route 23 at Brimmer Avenue in New Holland. Take Hill Road east one mile.

Lancaster Farming,
Saturday, April 15,
2000-B27
Public
Auction
Register

APRIL 2000

FRI APR 14 & SAT APR 15 - 9AM Furn & Display case, collectibles & antiques, misc At 1130 Lancaster Pike, Drumore Pa By Barry & Donna Tangert Probst Family Auction

FRI APR 14 & SAT APR 15 - Antiques agate tools, coins personal property At Upper Leacock War Memorial Building, 54 W Main St Leola, Pa By Muriel G Hager Jay M Leary, aucts

FRI APR 14 4 PM & SAT APR 16 - 8AM For J Harold & Jean Musser 1137 Newcomer Rd, Mt Joy, Pa Conestoga Auction Co

FRI APR 14 & SAT APR 15 - Auto Parts Auction for the estate of Coleman Stoops Along Rt 13 2.2 miles S of Odessa, Delaware Ted Maurer, auct

SAT APR 15 - Wickards Annual Consignment Sale & Machinery on consignment, plus 75 head of feeder cattle Kevin Wickard & Rick Foreman Robert Mullendore Aucts Carlisle Pa

SAT APR 15 - 8:30AM 45 acre farm in Center Twp, Snyder Co 7 mile NW of Middleburg Pa Retta Loss, owner Ken E Smith, Dennis Hassinger, aucts

SAT APR 15 - 8:30AM Antiques household goods, furniture Andrew Allwein, Rt 343 North of Lebanon Harry H Bachman auct

SAT APR 15 - 8:30AM Trucks real estate Blue Ridge Summit Pa Matthew S Hurley Auction Co

SAT APR 15 - 8:30AM Belleville Mennonite School Gift certificate auction, quilts



ANNUAL GOOD FRIDAY TOY AUCTION

10 A.M. FRIDAY, APRIL 21, 2000

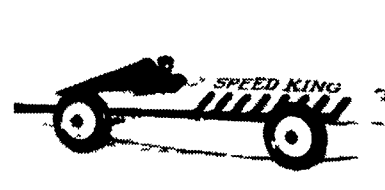
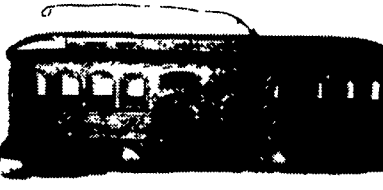
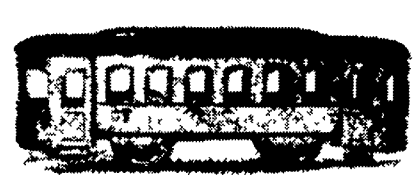
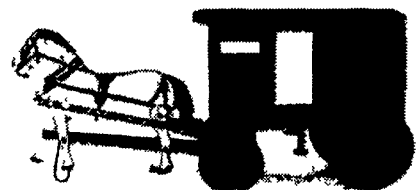
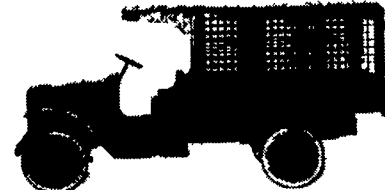
(Exhibition From 8 A.M. Sale Day Only)

RIDGE FIRE COMPANY

Along Rt. 23, Between Phoenixville, PA and Rt. 100

ALWAYS A FUN DAY FOR TOY COLLECTORS!

OVER 100 EARLY PERIOD TOOTSIE TOYS, ALL KINDS OF MARX TIN LITHO TOYS, EARLY PRESSED STEEL UNRESTORED, RESTORED AND TO RESTORE. LATER PRESSED STEEL IN GOOD SHAPE, PLUS SMITH MILLER TRUCKS. OVER 500 TOYS, NO RESERVES!



ANNUAL PRE-EASTER TRAIN AUCTION 10 A.M. SATURDAY, APRIL 22, 2000

(Exhibition Fri. 7-9 PM & 8-10 AM SALE DAY)

RIDGE FIRE COMPANY PAVILION

We like to celebrate the Easter Holiday with Prewar Trains Whenever Possible. This Year We Found A Good Selection of Ives "O" Gauge, Some Very Good Lionel Standard Gauge, Exceptional Prewar Lionel "O" Gauge, The Best Assortment Of Hornby We've Seen In Years, Even Some Live Steam. Visit our website www.maurerail.com For A Free List!

A 10% Buyer's Premium Will Apply To Both Sales.

TED MAURER (AU-000593-L)
Successful Auction Management
 Phones 610-323-1573 Any Time or
 610-495-5504 Sale Days
in Pottstown, PA

Visit our website at www.maurerail.com

Also, Private Toy
Collection Will Be
Sold In The Blue
Room 10 A.M.
Saturday, April 22.

