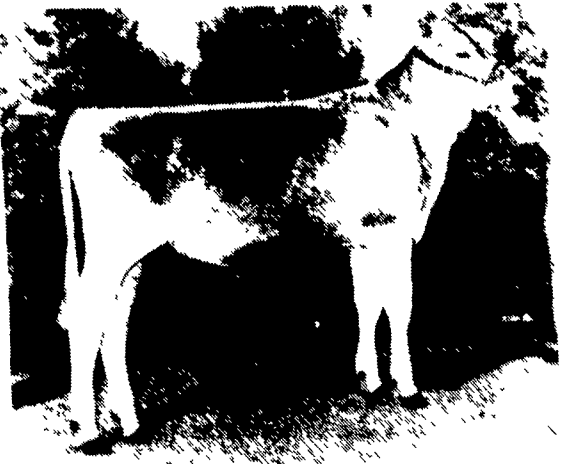


# Maryland Bell Ringers Announced



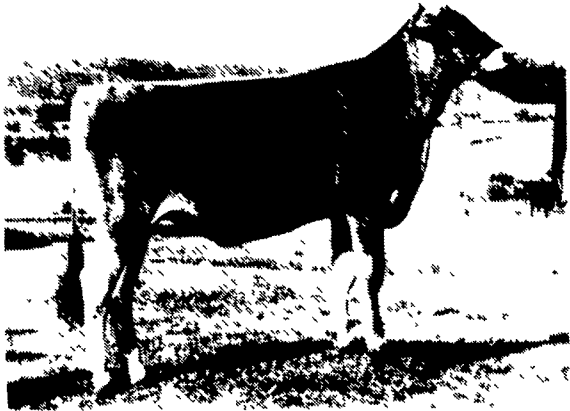
Burnt Mills Lees Jasmine, owned by Jason Fleming of Hollywood, is the spring calf winner.



The winner in the summer yearling division is Lake Lane Twizzle, owned by Danielle Bishop of Goldsboro.



Burlin Jetway Rosie ET, owned by Erin Burall from New Windsor, is the winter calf winner.



Savage-Leigh Tipster ET, owned by Jami Savage of Knoxville, is the fall calf winner. Tipster is also a reserve national bell ringer.



Erin Burall from New Windsor is the owner of the spring yearling winner, Burlin Rhythm Renee ET.



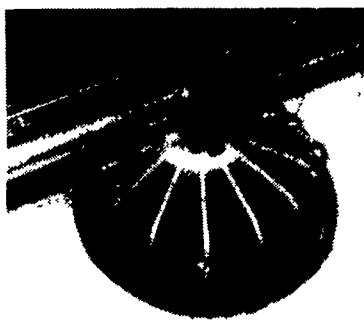
The winter yearling winner is Blessing Jetway Tara, owned by Jarrod Burall from New Windsor.

BUY, SELL, TRADE OR RENT THROUGH THE  
**CLASSIFIED ADS**

PHONE 717-626-1164 or 717-394-3047  
FAX 717-733-6058  
Mon., Tues., Wed. Fr. 8 AM to 5 PM; Thurs 7 AM to 5 PM



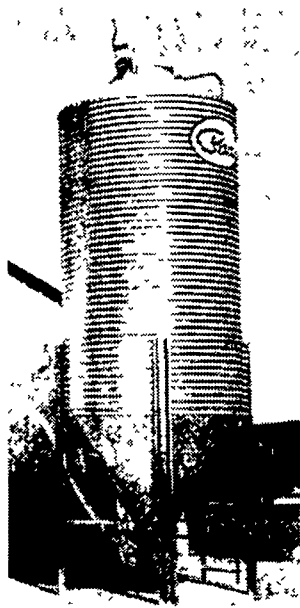
**Boosts Your Efficiency and Products with these Innovative Products...**



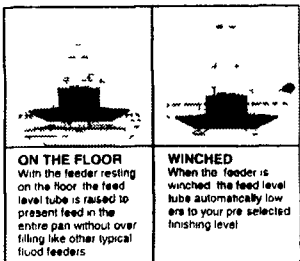
**QUICK-START**

The Pax QUICK-START™ pan feeding system grows chicks into FINISHED broilers efficiently.

Start chicks with the feeder resting on the floor and the feed pan entirely filled. The Pax QUICK-START™ pan provides easy access to plenty of fresh feed – with no accumulation of stale feed in the drop tube – attracting even the smallest chicks to begin feeding right away.



Feed Storage and Delivery Systems



Flexible Auger for Low Volume, Standard Volume, High Volume, as well as High Moisture (up to 25%) and pellet applications

**Zeiset Equipment**



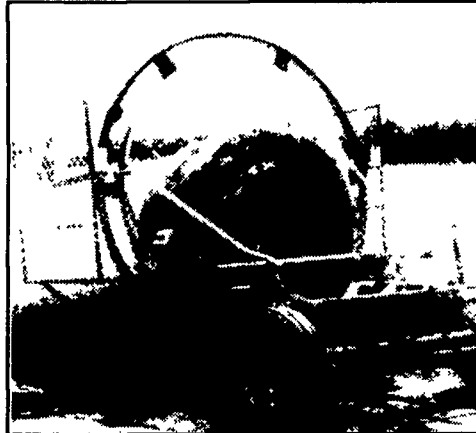
2187 North Penryn Rd., Manheim, PA 17545  
Phone (717) 665-4056 Fax (717) 665-2240

**Brubaker**  
CONSULTING GROUP

- ◆ Field Crop & Vegetable Consulting
- ◆ Soil Testing ◆ Precision Ag
- ◆ Spreader Calibrations
- ◆ Nutrient Management
- ◆ IPM / Field Scouting
- ◆ GPS Soil Testing
- ◆ Manure Analysis

**800-840-1711**

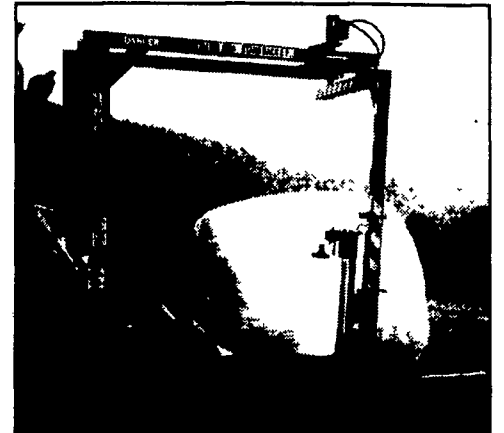
**STRETCH-O-MATIC**



**TUBULAR BALE WRAPPER**

FAST - Wrap up to 140 bales in an hour.  
Handles bale sizes up to 5'0"x5'6"  
Compact size - 8'0" wide x 8'6" high  
Available with optional remote control and optional front wheel drive.

**FARMLUND**



**ROUND BALE WRAPPER**

Handles bale sizes up to 5'0"x5'6"  
Category 2 - Three point hitch mounted  
All hydraulic driven.  
Load - Wrap - Transport - Unload  
**ONE MAN OPERATION**

Wholesale Distributor

**HAMILTON EQUIPMENT, Inc.**

567 South Reading Road, Ephrata, PA 17522  
Telephone: 1-717-733-7951