

70 Int'l Dump Truck, 238 Detroit Dsl, very good cond, 54k GVW, single axle, 40K MI on rebuilt eng. \$5500 814-448-0147

74 Int'l 10 Whl Dump Truck 3208 CAT, 13 Spd, New Tires, Rebuilt Trans, Runs Great! \$8,500/obo 717-423-6758

98 Dodge Grand Caravan LE, oil wheel drive, keyless entry, PW, PL, tilt, cruise, cassette, compass, thermometer, power seats, dual sliding doors, slate gray color, 3.3 engine, 62,000 mi., \$12,900. 717/336-7375.

STOCK GOOSENECK 16x6x6", STOCK BUMPER 16x6x6" 3 HORSE SLANT OPEN STOCK w/ dressing rm & rear tack. Used 2 horse 1986, call for pricing. New & Used trailers available. NETCO Trailer Sales, 410-838-1282.

TRUCKERS
 27' HD RATCHETS.....\$13.95
 WINCH STRAPS.....\$12.95
 RUBBER T. STRAPS.....54c
 REFLEXITE RED/WHITE TAPE.....82c/Ft.
TIRONIE TARPS
 (800) 874-2928 • FAX: (570) 584-3127

Appalachian Manufacturing, Inc.
 330-222-2468



20,000# G.V.W. Oil Bath Axle
 10K Dual Tandem Trailers - Spring Assist Ramps
 Pintle Pull, 18x5, Dovetail \$4,750
 Gooseneck, 20x5 \$5,000



24' Gooseneck, 4' dovetail, 1-12,000# G.V.W., 6,000# axels w/easy lube, electric brakes, 7.50-16 tires, breakaway kit, ramps w/pressure treated deck, standard 12,000 GVW \$2,995
 14,000 GVW \$3,195



16' Car Hauler, diamond plate deck with W/D rings self storing ramps, 7,000# G.V.W., elect. brakes, both axels 82" between wheel wells, breakaway kit incl
 16' Car Trailer \$1,495 18' Car Trailer \$1,645



21' Low Profile, 10,000#, axel w/easy lube, elect. brakes, pressure treated deck, 10,000# G.V.W., gooseneck \$3,100
 Bumper pull \$2,950



1984 INT MODEL 1954 DT 466
 35,000 GVW, 8 Ton S.S. Ag Craft Two Compartment Tender with Stainless Steel Roll Tarp, 8" Hydraulic Auger
\$12,000 • CALL 570-726-4525

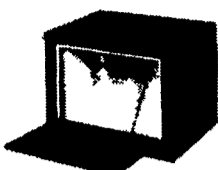


HOSTETLER

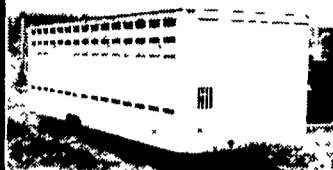
Truck Bodies & Trailers

717-667-3921

Milroy Exit off Rt. 322
 Between Lewistown & State College



Tool Boxes, 36"x18"x18" \$162
 24"x18"x18" \$146 42"x18"x18" \$169
 30"x18"x18" \$155 48"x18"x18" \$178



20' Eby Cattle Bed, Used, Very Good Condition
\$3,995

FEATURE TRAILER

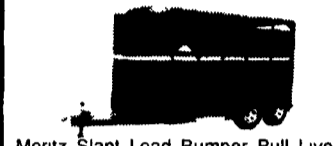
EBY ALUMINUM BUMPER PULL LIVESTOCK TRAILER



Rubber Torsion Axles, 1/2 Slider on Rear, Divider Gate, Escape Door, Spare Wheel & Tire, 6'8" Wide x 16' Long
\$8,425

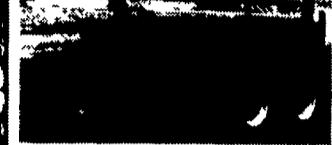


New Design Moritz Livestock Trailers Semi Round Front, New Sides and Rear
 6x16 7000# GVW \$3,575
 6'8" x 16' Long 7000# GVW \$3,775



Moritz Slant Load Bumper Pull Livestock Trailers, Dressing Room, 7' High, Starting at
 2 Horse \$3,650
 3 Horse \$3,950

Financing & Leasing Available



Pronovost Model P-516 Farm Dump Trailer, 8 Ton Capacity, 5'x10' 16' Removable Sides, Twin Cylinder
\$3,495



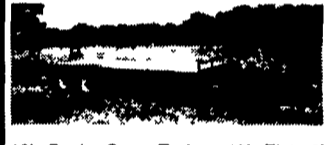
Corn Pro Bumper Pull Livestock Trailer, Corn Pro, Rubber Torsion Axles, Treated Pine Floor
 6x16' 3500# Axles \$3,495
 6'8" Wide x 16' Long 3500# Axles \$3,725
 6'8" Wide x 16' Long 6000# Axles \$4,045



Moritz Skid Loader Trailers, 82" Wide Between Fenders, Rubber Torsion Axles, Treated Pine Floor, 10,000# Drop Leg Jack, Spare Wheel & Tire, Adj Coupler 10,000 GVW Available in 7 Colors
 16' Long \$2,875
 18' Long \$3,030



Hydraulic Tilt Deck Trailer
 19' 10,000 GVW \$3,895
 19' 12,000 GVW \$4,395
 Also Available in 21'



18' Deck Over Trailer, 16' Flat 2' Dovetail with 5' Ramps, 10,000 Lg GVW, Adj Coupler
\$3,595



Used Hostetler 16' Deckover 2' Dove Tail with Ramps, 10,000# GVW, Inspected
\$1,995



Single and Dual Wheel Pick Up Flatbeds, Bulkhead, Outside Pockets, Rear Skirt, With or Without Gooseneck Compartments
 Starting at **\$825**

Great Selection!
 Specializing In
 Late Model Vans

30/Four Way Auto Sales

770 W. Main New Holland, PA 17557
 (717) 354-3199
 1-877-999-VANS (8267)

14 In Stock



(14) 96/97/98/99 FORD E-150 CLUB WAGONS, XLT, CHATEAU 7/8 Passenger, 4.6/5.4 Triton V8, Dual A/C & Heat, Privacy Glass, Tilt, Cruise, PW, PL, All Colors, 5-64K, Prices Starting at \$11,900 Call For Details

2 In Stock



98 FORD E350 CLUB WAGON CHATEAU, 7 Passenger, 6.8 Triton V10, Dual A/C & Heat, Privacy Glass, Tilt, Cruise, PW, PL, Keyless, P Seat, Cassette, Tow Package, Green & Silver, 14K, #3309

3 In Stock!



99 CHEVY G3500 EXTENDED EXPRESS LS, 15 Passenger, 5 7 V8, Dual A/C & Heat, Privacy Glass, Tilt, Cruise, PW, PL, Cassette, Hinged Doors, White, 11k Mi., #3212

3 In Stock!



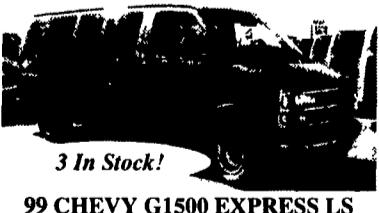
99 DODGE B3500 MAXI RAM WAGON, 15 Passenger, 5 9 Magnum V8, Dual A/C & Heat, Privacy Glass, Tilt, Cruise, PW, PL, Keyless, Cassette, Hinged Doors

MINIVANS IN STOCK

- (3) 98/99 Chevy Astro
- (1) Toyota Sienna XLE
- (2) Plymouth Grand Voyager
- (1) Ford Windstar



99 DODGE B2500 RAM WAGON, 8 Passenger, 5.2 Magnum V8, Dual A/C & Heat, Privacy Glass, Tilt, Cruise, PW, PL, Keyless, P Mirrors, Cassette, Chrome Wheels, Green, 16k to 27k



99 CHEVY G1500 EXPRESS LS 8 Passenger, 5 7 V8, Dual A/C & Heat, Privacy Glass, Tilt, Cruise, PW, PL, Keyless, P Seat, P Mirrors, Cassette, Tow Package, 3 73 Ltd Slip Rear, Charcoal, 30k Mi., #3239
 Also 96 In Stock



99 FORD E-350 CLUB WAGON XLT 12 Passenger, 6 8 Triton V10, Dual A/C & Heat, Privacy Glass, Tilt, Cruise, PW, PL, P Mirrors, Cassette, Lt. Blue, 19k Mi., #3347

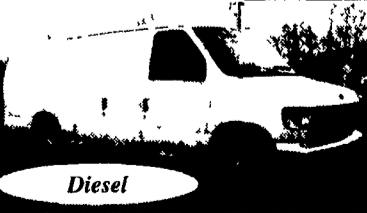


99 FORD E-350 SUPER CLUB WAGON XLT 15 Passenger, 6 8 Triton V10, Dual A/C & Heat, Privacy Glass, Tilt, Cruise, PW, PL, P Mirrors, Cassette, Green 27k Mi.

TRUCKS IN STOCK AS WELL



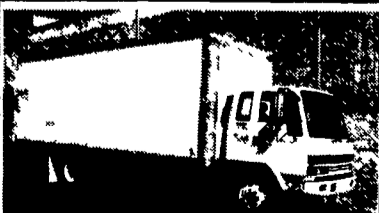
98 FORD E-250 ECONLINE 5.4 Triton V8, 8700 GVWR, 60,000 Mi., A/C, Dual Airbags, Side & Rear Door Glass, #3264



98 FORD E350 SUPER ECONOLINE 7.3 Power Stroke Diesel, A/C, Tilt, Cruise, Cassette, 9500 GVWR With or Without Expediter Package, White, 59k Mi. #3320



99 FORD F800 w/20' Reefer Body w/Thermo King II Electric Standby, 5 9 Cummins, AT, 26,000 GVWR, A/C, Curbside Door, 21k Mi., Excellent Condition



94 ISUZU FSR w/24' Van Body, 5 8 Turbo Diesel, 5 Sp., 22,000 GVWR, 129k mi., Excellent Condition



96 FORD E-450 SUPERDUTY HI CUBE 7 3 Power Stroke Diesel, 14,500 GVWR, 14' Supreme Body w/Liftgate, High Miles, But Excellent Shape, #3345