

- F800 Diesel 24' Heway hay & grain truck, will haul 32 round bales or 12 ton corn.... \$12,000
  - Fox 6600 SP harvester, V671 Detroit, 3RN, Hay head, 1900 hrs, Ex. Cond.....\$10,000
  - Fox Super D, New tires, parts machine, w/2 heads
  - Kubota 7950 4WD, 80hp, new tires, snow & silage plow, 2700 hrs..... \$12,500
  - Gehl 1475 Round Baler w/Crowder wheels, like new.....\$14,500
  - Gehl 325 Box Spreader, Like new.....\$4,200
- Leave message or call between 6 & 8pm  
**570/596-4436**

**CHAPMAN FORD LINCOLN MERCURY NISSAN**

**717-272-7671**

Parts Dept. Open Daily 8-5  
Sat. 8-12 717-273-8168

**PART OF THE CHAPMAN AUTO GROUP**

**LEBANON**

20th & Cumberland Sts.  
Rt. 422 West  
9-9 Daily, 9-5 Sat.

**Load Boss Trailers**



**814-623-8696**

**814-623-9696**

**FAX: 814-623-7995**

Quality Built Highway Dumps Built To Suit Your Working Needs:

**Spring Sale** 6 x 10 7,000 GVW \$3,100  
6 x 10 10,000 GVW \$3,300

New\* 3 way tailgate with dump truck style lever \*painted color of choice\*  
**FREE 200 mile delivery**

**We Are The Factory No Middle Man!!**

**99 FORD F250 SUPER DUTY**

Powerstroke, XLT, 4x4,  
- This Will Not Last Long, #P4375  
- HARD TO FIND -



**98 DODGE 1500 SUPER CAB**

4x4, Very Nice Truck,  
#4542A



**90 FORD F150 SUPER CAB**

4x4, 5.8 V8, AT, Cap, Dual Tanks,  
Low In Miles #6005A

**97 FORD F250 SUPER DUTY CREW CAB 4x4**

460 V8, PW, PL, Cruise, Tilt, CD  
Player, #P4377 - Will Sell Fast -



**98 FORD RANGER**

A/C, 5-Speed, Green,  
#4088A



**97 FORD F150 SUPER CAB**

4x4, XLT, PW, PL, Cassette,  
AT, #4473A

**2000 FORD RANGER SUPERCAB XLT**

4x4, Auto, CD Player, 5,800 Miles, #4426A  
**SAVE THOUSANDS OVER NEW!**



**98 FORD F150 XLT 4X4**

PW, PL, Tilt, Cruise, Super Truck,  
#4463A



**98 FORD RANGER SUPERCAB 4X4**

XLT, Very Nice Truck  
Priced Right! #PL4342

**Credit Problems? Call 1-888 CARS 4 You TRUCKS - UTILITY VEHICLES - TRUCKS**



**99 FORD F350 CREW CAB DUALY**  
Power Stroke Diesel, 4x2, 6 Spd, XLT Lanat,  
Most Options, A/C, Cass., Alloy Wheels, Red,  
8,300 Miles, #F931



**99 FORD F350 CREW CAB 4x4**  
Short Bed, Triton V10, AT, XLT, Most Options,  
8,000 Miles, Factory Warranty, Maroon, #F880



**95 CHEV. K2500 EXT. CAB 4X4**  
6.5 Turbo Diesel, Silverado, AT, A/C, Most Options,  
Dark Green Metallic, 72,000 Miles #C557



**93 FORD F250 SUPER CAB 4x4**  
8,800 GVW, 5-Spd, XLT - Most Options, A/C,  
351 V8, 63,000 Miles, Blue, #F936



**96 FORD F250 CREW CAB 4x4**, Short Bed,  
Power Stroke Diesel, AT, A/C, Most Options,  
63,000 Miles, Dk. Blue, Alloy Wheels #F923



**96 CHEV 2500 EXT. CAB 4x4**  
6.5 Turbo Diesel, 5 Spd, A/C, Cruise,  
67,000 Miles, Teal, #C555

**OVER 120 TRUCKS**

Preferred Warranties Available on Most Trucks

**Bobby Gerhart's Truck World**

2400 E. Cumberland St.  
Rt. 422  
Lebanon, PA 17042  
**717-273-7995**

Mon. - Fri. 9-8, Sat. 9-3



**97 DODGE RAM 3500 CLUB CAB DUALY 4x4**  
Cummins Turbo Diesel Laramie SLT AT A/C  
Most Options Power Seat White 56 500 Miles  
#D309



**99 FORD F350 SUPER DUTY QUAD CAB 4X4 DUALY** Power Stroke Diesel, AT, XLT  
Lanat, (Most Options), CD Player 17,000 Miles  
Black w/Sandalwood Bottom #F893



**95 CHEV. KODIAK DUMP**  
366, 4 Spd, Allison Trans., AT, PS, PB  
25,950 GVW, Good Tires and Inspected,  
Ex Cond., Ready To Work. 2 To Choose From



**90 FORD F250 SUPER CAB 4X4**  
7.3 Diesel, 5-Spd., Centurion Conversion Pkg,  
A/C, Most Options 120,000 Miles, Blue &  
Silver (Very Nice) #F929



**95 FORD F350 CREW CAB 4x4**  
Power Stroke Diesel XLT, AT, A/C, Most  
Options, CD Player, Alloy Wheels, White,  
203,000 Miles, Looks and Runs Good



**94 CHEV 3500 H.D. w/9 FT. UTILITY BODY**, 6.5 Turbo Diesel, AT, A/C,  
AM/FM, 15,000 GVW, 31,000 Miles, White



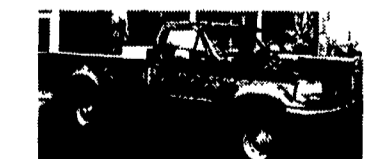
**97 FORD F250 SUPER CAB 4X4**  
Powerstroke Diesel, 5 Speed, XLT Pkg, Alum.  
Wheels, 32,000 Miles, White w/Grey Int. #F913



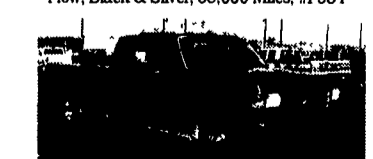
**98 DODGE RAM 2500 QUAD CAB**  
LE Pkg., Cummins Turbo Diesel, AT, AC, PS, PB,  
PW, PL, C, T, Chrome Wheels, Aqua & Silver,  
18,000 miles, Excellent Cond., #D302



**96 FORD F250 XL**, Trm 4x4, Powerstroke,  
Diesel, 5 Sp., A/C, AM/FM Cass, Dual Tanks,  
83,000 mi., Red, #F909



**95 FORD F350 4X4**, Power Stroke Diesel, XLT,  
AT, A/C, Most Options, CD Player, Power Angle  
Plow, Black & Silver, 58,000 Miles, #F934



**88 FORD F350 CREW CAB DUALY**  
XLT, AT, 460 V8, PS, PL, A/C, Looks & Runs  
Good, Black & Red, 98,000 Miles



**2000 FORD F350 CREW CAB DUALY 4X4**  
Power Stroke Diesel, XLT, AT, A/C, PS, PB, PW, PL,  
C, T, CD Player, L.S. Rear, Alloy Wheels, White  
w/Tan Leather, Only 3,000 Miles, #F900



**97 DODGE RAM 2500 CLUB CAB 4X4**  
Cummins Turbo Diesel, AT, A/C, Cass.,  
Red & Silver, 44,000 Miles, #D306



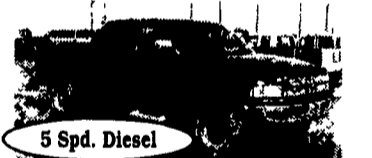
**96 FORD F350 CREW CAB DUALY**  
Power Stroke Diesel, Conversion Pkg., AT, A/C,  
Full of Options, 106,000 Miles, Dk Red #F924



**94 DODGE RAM 2500 4x4**  
Cummins Turbo Diesel, AT, A/C, Most Options,  
73,000 Miles, Black, #D308



**92 FORD F350 CREW CAB DUALY**,  
7.3 Diesel XLT, AT, A/C, Most Options,  
92,000 Miles, White, #F933



**96 DODGE RAM 2500 ST CLUB CAB 4X4**  
Cummins Turbo Diesel, 5-Spd., Cass.,  
A/C, 68,000 Miles, Black D305



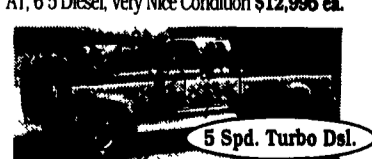
**96 DODGE RAM 2500 CLUB CAB 4X4**  
Cummins Turbo Diesel, AT, A/C, Laramie SLT,  
Most Options, 87,000 Miles, White, #D310



**95 DODGE RAM 2500 CLUB CAB 4X2**  
Cummins Turbo Diesel, Laramie SLT, AT,  
A/C, Most Options Red & Silver,  
70,000 Miles, #D307



**(2) 95 GRUMMAN GMC 14 FT. STEP VANS**  
AT, 6.5 Diesel, Very Nice Condition \$12,995 ea.



**88 FORD F250 SUPER CAB 4X4**  
7.3 Diesel w/ATS Turbo, XLT, 5 Spd.,  
104,000 Miles, Very Good Condition, Brown & Tan  
#F926