

1985 Ford, 370 gas eng, 5 spd, 16' alum livestock body, good cond, \$4,900 OBO. 610-948-7759.

'85 Freightliner conventional, 42" bunk, 400 Cummins, 150K on major Plus-many extras w/possible \$100,000/yr contract. Home everyday, local haul only. 610-967-3691.

20'8" Morgan body, 8' wide, 2 rows E-track, 80" roll door clearance, rolls 32" on center, good condition, \$1200. Lebanon Co. 717-865-6860.

'85 Int, C/O, good condition, new steer tires, 411 rears, 13 spd, new trans, runs good. 717-593-4661.

'88 Jeep Comanche pickup, 4cyl, 5spd, red chrome rims, bedliner, asking \$4,000. 717-624-1533.

'85 Jeep J20 pickup, V8, 360, 4x4, great hauling truck, asking \$4,500. 717-624-1533.

Dump trailer, 22' aluminum, excellent condition, \$3500 firm. 215/598-9975 after 7pm.

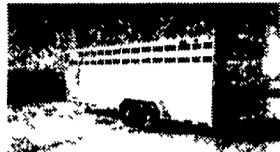
95 Ford F250 dsl, 4WD, super cab, XLT, all options, 69,000mi, \$21,000. 410/557-7114.

1996 48' Gooseneck Trailer, 3 Axle, 21K GVWR, Set Up for Hotshot. \$6,500 717-789-2414

1963 B model Mack, single axle dump truck, 711 eng w/jake brake, duplex trans, no rust, nice condition, \$4,000 OBO. Call eves, 304-735-5710.

ALUM-LINE, INC.

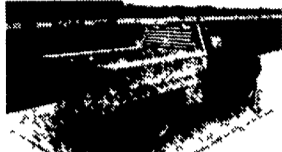
The Leader In Heavy Duty Construction
"More Trailer - Less Money"



All-Aluminum Livestock Trailers, Bumpers & Goosenecks • 8' to 39' Lengths • Double Deck Package Available

"The Finest Truck Bed You'll Own"

All-Aluminum Stake Body Beds • 6' To 24' Lengths • Many Standard & Optional Features • All Types of Tool Boxes



Also from Alum - Line, a complete line of aluminum pickup boxes and truck tool boxes

Wolfe Auction
9801 Hansonville Rd.
Frederick, MD 21702
800-443-9580

(3) 1979 Mack DM600 triaxles. Low miles, snowplows w/spreader box.
\$35,000 each OBO
(215) 364-4000

Quic'n-Easy

RECEIVER HITCH BY DMI™

The Latest In-Tow-Vation!

Fashioned 2" Receiver Hitch

- Fits under your truck bumper, mounting directly to your truck frame
- Brings the receiver to your load - extends 7" and swings 12"
- Exclusive Proximity Hook-up - one person gets it right the first time
- Spring "Cush'n" takes the push/pull out of towing, lowering stress on the driver and truck drive train
- Tows whatever your truck is rated to tow - exceeds Class IV certification
- Accepts a variety of adapters drawbar, ball, step-up or step-down, pintle hook and weight distribution system

Never Miss a Hitch Again. DMI

no need to match up receiver extends 7" swings 12" left to right back up to lock pull forward to align

Weaver Distributing
1-800-Weaver-D
RR2, Box 470, Fredericksburg, PA 17026

HARD TO FIND TRUCKS!

'96 Ford XL F250
8,600 GVW, 351 V-8, Auto, AC, 45,000 Miles **\$12,990**

'94 Chevy Cheyenne C25
8,600 GVW, 350 V-8, Auto, AC, 73,000 Miles **\$10,800**

'91 Ford E350 14' High Cube Van
351 V-8, Auto, PS, PB, 115,000 Miles **\$4,990**

"THE TRUCK PEOPLE"
Over 30 Pre-owned Trucks In Stock!
BOYER MOTOR CO.
1065 S. State Street
Ephrata, PA 17522
717-738-1885 1-800-786-1835

DIESEL REPAIRABLES

2000 Ford F350 4x4, A/T, 4k, XLT, Side Damage..... \$15,500	1997 Ford F250 4x4, A/T, 13k, XLT, Water Damage..... \$14,500
1995 Dodge 2500 w/Utility Body, A/T, Right Front Damage, 60k. \$8,900	1994 Dodge 3500 Dually, A/T, Water Damage \$9,900

OTHER TRUCKS

98 Ford F150 4x4, 6 Ft., A/T, Front Damage.	\$10,500
99 Ford E150 Cargo Van, Front Damage	\$6,900
99 Expedition Eddie Bauer, Lite Rear Damage	\$23,500
84 Ford F350, Steel Rollback.....	\$5,800
95 Tahoe, Rec. Theft, OK.....	\$14,900

THOMPSON MOTORS
Rts 412 & 212, Springtown, PA 18081 • 610/346-8588
Call from your fax machine 610/346-8890 for a "fax back" list of vehicles.

TRUCKS, TRUCKS, TRUCKS...

2000 Chev. 3500 HD Diesel, 15K GVW, Dynamic Tow Truck (2) Available	1999 Chev. C3500 Cutaway Box Truck, Diesel, 900 Miles
(2) 1999 & Chev. 2500 HD, 4x4, Vortec V8, w/Western Plow	2000 Express Cargo Vans (1) 1-Ton, (4) 3/4 Ton, (2) 1/2 Tons. All with AT & A/C. ★ SPECIAL FINANCING AVAILABLE. Commercial Choice Program
2000 Chev. 3500 Ext. Cab Dually, Heavy Duty, Vortec V8, AT	2000 Chev. Astro Cargo Vans AT, V6, 6-in Stock, ★ SPECIAL FINANCING AVAILABLE. Commercial Choice Program.

LEFEVER BROS.

CHEVROLET

CHEVY TRUCKS

Geo

YOUR DIRECT LINE TO GENUINE GM PARTS

(800) 533-3837

When you call the number listed above, you'll reach our wholesale parts specialists, who can help you keep your GM repair work moving quickly

Ask about:

- Specializing in GM Medium Duty Trucks, Current and Obsolete.
- \$500,000 Parts Inventory.
- Parts Locator for Those Hard to Find Items.
- We Ship Anywhere, Local Delivery Available.
- Experienced, Knowledgeable Personnel.

Mon, Tues, Thurs Fri
7 30 a m - 4 30 p m
Weds 7 30 a m - 8 30 p m
Major Credit Cards Accepted

(717) 432-9697
Quality Dealer Since 1921
406 U.S. Rt 15, Dillsburg, PA 17019

GENUINE GM Parts

Nothing's better than an original.

C-SERIES

Frederick's
SUPERMARKET OF CARS TRUCKS

1505 Quentin Rd., Lebanon, PA 17042 (717) 274-1461