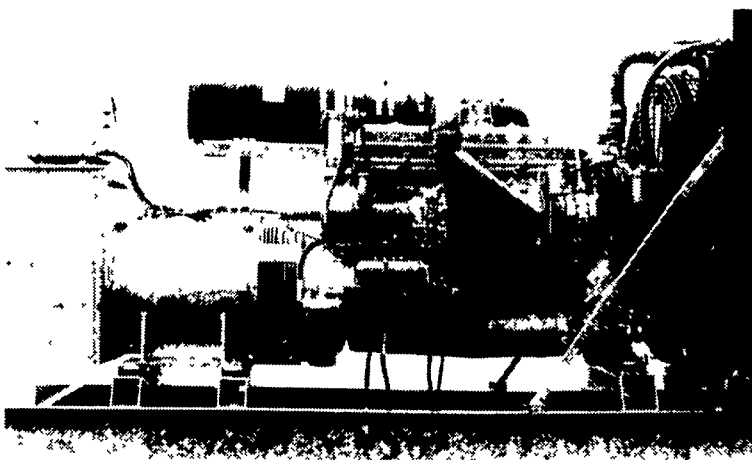


# GENERATORS



**MARTIN ELECTRIC PLANTS • Manufacturer of:**  
**DIESEL, LP GAS, NATURAL GAS, PTO**  
**Automatic & Manual Start Systems**  
**USED UNITS ALSO AVAILABLE**

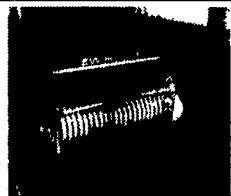
*Call Us For All Your Generator Needs!*

## MARTIN ELECTRIC PLANTS

280 Pleasant Valley Rd., Ephrata, PA 17522-8620

800-713-7968

Tel: 717-733-7968 Fax: 717-733-1981



NH 316, 75 Thrower, 1 Owner, RBP

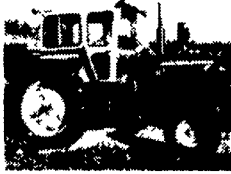


JD 3000, TFE, Nice

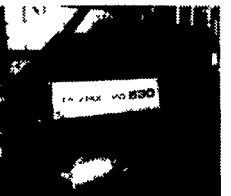


1941 Farmall H, rare, spoke wheels, runs exc.

**New Farmco 18' Thrower Wagons w/8 Ton Gear \$2,000**



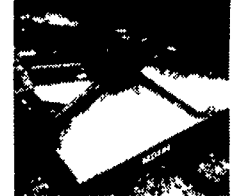
JD 4020, WFE, cab, super nice



NH 630 Round Baler, Like New



NH 311, 70 Hyd. Thrower, RBP, Super Nice



Woods MD184, 7' Rotary, Like New

### QUALITY HAY EQUIPMENT

One of Pa's Largest Selections

- BALERS**  
 \* RBP - Rebuilt Plunger (new pin, bushings, rollers, slide blocks)
- JD 347, 40 ejector, RBP \$7,500
  - JD 327 w/30 ejector, RBP, ex paint \$5,500
  - JD 328, 40 ejector, RBP \$6,000
  - JD 24T, chute, field ready \$1,250
  - JD 24T, chute, excel \$1,200
  - JD 348 hyd tension, 1/4 turn chute RBP, Nice \$8,000
  - JD 346, 30 ejector (2) Coming In
  - JD 336, 30 ejector (3) Coming In
  - JD 30 ejector, complete \$500
  - JD 14T, 24T and 336 parts balers CALL
  - NH 316 Baler, super sweep, 75 Ejector, RBP, sharp \$7,450
  - NH 326 baler, 70 hyd thrower, exc Coming In
  - NH 316 baler, 70 hyd thrower, super nice \$6,900
  - NH 311 baler, 70 hyd thrower, RBP, super nice \$6,500
  - NH 276 baler, chute, field ready \$2,500
  - NH 276 baler, super sweep, 54 thrower \$3,200
  - NH 276 baler, super sweep, 54 thrower \$3,000
  - NH 276 baler, super sweep, 54 thrower \$2,800
  - NH 276 baler, super sweep, 54 thrower \$2,800
  - NH 320 baler, super sweep, 75 thrower Coming In
  - NH 320 baler, super sweep, 70 thrower Coming In
  - NH 282, super sweep, hyd tension, hi cap \$1,800
  - NH 275 Baler, super sweep, chute, clean \$1,800
  - NH 75 Pan Thrower, complete, off of 315 \$600
  - NH Hydraulic tension unit off of 320 \$400
  - NH 68, 69, super 69 parts balers CALL
  - Case 330, AC 444, IH 46, IH 47 parts balers CALL
- ROUND BALERS**
- NH 630, 4'x4' bales, like new, new belts \$8,000
  - NI 484, 5'x4' bales, clean rust fr Wisc baler \$6,000
- DISCINES**
- JD 1470 11' comp rebuilt, new rolls, new cutterbar \$9,000
  - JD 1460 9', ex rolls, sharp paint, our own \$7,500
  - Vicon KM321, 9' very good rolls, ex cond \$4,750
  - Vicon KM321, 9' good rolls, v g cond \$4,200
  - Kuhn FC300G, 8', 540 or 1000 RPM \$5,000
  - Deutz Allis RM80 Discbine Coming In
- HAYBINES**
- JD 1219, 9' mechanics special CALL
  - NH 467, 7' excellent rolls, good paint \$2,000
- RAKES & TEDDERS**
- IH 1190, 9', good rolls \$1,500
  - IH 1190, 9' Good rolls \$1,500
  - IH 1490, 12' hydrowing, good rolls \$2,500
  - Hesston 1010, 9' hydrowing \$1,500
  - IH 990, JD 1209, Ford 550, NH 479, Haybines for Parts CALL
  - NH 57 3pt hitch rake \$1,400
  - NH 256 rake, vg condition \$1,700
  - NH 256 rake, vg condition \$1,750
  - NH 56 rake \$1,100
  - NH 157 rotary tedder, brand new \$1,850
  - Pequea 910 tedder, PTO, good cond \$1,250
  - Pequea rake inverter, near new cond \$2,500
  - JD 670 \$1,850
  - Farmhand, 4 wheel rake, good cond \$500
  - Grimm PTO tedder Coming In
  - Several other rakes CALL
- MOWERS**
- Woods HD 315, 15 Batwing, VG condition \$5,000
  - Woods MD 184, 7' rotary, 3 ph, like new \$2,000
  - NH 451 sickle bar, 9' bar, no wds, v g cond \$1,500
  - Heavy duty 6 rotary mower, 3 PH, super \$750
- TRACTORS**
- JD B Tractor, 1941, raised letter rear, ex paint new tires \$2,500
  - JD 3010, gas, TFE Coming In
  - JD 4020, WFE, dual hyd cab, super nice \$12,000
  - JD 4020 WFE, dual hyd, excel cond \$9,000
  - JD 4020 Turbo, WFE, dual Hyd \$9,000
  - JD 3010 TFE, gas, roll bar very nice \$5,000
  - Farmall Super C w/McCormick loader \$2,000
  - Farmall MD NFE, Runs Excel \$3,000
  - Farmall H 1941, Spoke Wheels, Exc \$1,800
  - Farmall H Rem Hyd Dual Fuel, Exc \$1,600
  - Farmall Cub, 1948, sickle bar mower \$1,900
  - Farmall A WFE, good paint, runs ex \$1,800
  - International Cub, belly mower, runs ex \$2,700
  - Farmall H, 1944, excellent rear rubber \$1,400
  - Farmall Cub, runs excellent \$1,800
  - Ford 9N, good paint & rubber, runs excel \$2,250
- MISCELLANEOUS**
- Wood Thrower Wagons NH 8 ton gears, flotation tires, excellent, 6 available \$1,200
  - JD 4x16 plow, Excel \$600
  - Oliver 3x16, 3 pt, plow excel cond \$550
  - Farmco 18' steel side throw wgn, 8 ton, new \$2,000
  - Farmco 8 horse feeder, new \$350
  - JD 8300 grain drill 18x7, grass box, exc \$3,000
  - Brillion 9' cultipacker, rebuilt, new shaft & bearings \$600

717-235-1766

Financing Available

3 Miles north of Shrewsbury Pa on White Oak Road  
 Open Saturdays & Sundays 8 a.m.-2 p.m.  
 Weekdays 8 a.m. - Noon or By Appointment

Call for Directions

## COWAN EQUIPMENT

Martinsburg, PA

814-793-4293 Day or Evening  
 or 814-793-9797 • Fax 814-793-2431

### Financing & Leasing Available

- JD 6910 chopper w/6 Row Head
- JD 5460 chopper, 4x4
- JD 5830 chopper, 4x4 Kemper head
- JD 5730 chopper, 4x4
- JD 5820 chopper
- JD 5400 chopper, 4x4
- JD 6R head for 5830
- JD 4RN converging head, like new
- JD 4RN stocker head
- Kemper 4 row head, excellent
- JD kernel processor
- JD 5400, 4x4
- JD 5300, 4WD
- JD 4055, cab & air, 4WD
- JD 3255, cab & air, 4x4
- JD 3255, 4 post, 4x4
- JD 3155, cab & air, 4x4
- JD 4850, 4x4
- JD 4650, cab & air, 4WD
- JD 4450, cab & air, power shift, 4x4
- JD 4050, 4 post, power shift
- JD 2950, cab & air, 4x4
- JD 2950, fender
- JD 4840, power shift
- JD 4440, cab & air, quad range
- JD 4440, cab & air, power shift, '82 model
- JD 4240, cab & air, quad range, 1982 model
- JD 4240S, 4x4
- JD 2640
- JD 4430 cab, air, power shift
- JD 4430, 4 post, power shift
- JD 4430, cab & air quad range
- JD 4230, cab & air, quad range
- JD 4320 w/fender
- JD 4020 powershift, gas
- JD 4020 powershift, '70 model
- JD 730, Diesel
- JD 530
- IH 3588, cab & air, 4x4
- IH 1486, cab & air
- IH 1466, cab & air
- IH 1066, fender
- IH 1086, cab & air
- MF 1085, cab & air
- MF 1105, cab & air
- White 2-135, cab & air, 4x4
- White 2-105 w/cab, 4x4, 1982
- White 2-105 w/cab
- Ford 8210, cab & air, 4WD
- Ford 7000, diesel
- Ford 5600, 4x4
- Ford TW25, cab & air, 4x4
- AC 190 w/cab series III
- AC 180, diesel
- JD 260 loader
- JD 158 loader
- JD 148 loader
- JD 245 loader
- JD 48 loader

## STOUFFER BROS. INC.

1066 Lincoln Way West, Chambersburg, PA

Phone 717-263-8424

### NEW MACHINERY SPECIALS

- \* New Gehl WR522 12-Wheel V-Rake, No Trade Special \$6,600  
 List \$7,677, w/Center Wheel Kit  
 List \$7,066, w/Out Center Wheel Kit No Trade Special \$6,075  
 9 9% 36 Payments, No Interest, No Payment Until 1-1-2001
- \* New Gehl MS 1287 Box Spreader, 11 00x22 5 Tires, Upper Beater  
 Splash Guard, Hydraulic Endgate **SOLD**  
 List \$10,527 No Trade Special \$8,530  
 9 9% 36 Payments, No Interest, No Payment Until 1-1-2001
- \* New Gehl MS 1322 Scavenger Spreader, 540 RPM,  
 19Lx16 1 Tires, Side Rails, Splash Guards,  
 List \$19,646 No Trade Special \$14,552  
 5 9%-36 Months or 9 9% No Interest, No Payment Until 6-1-2000

### FORAGE

- Gehl 940 Forage Wagon 16' Gehl FB 1580 Forage Blower
- Gehl 1560 Forage Blower Badger BN2060 Blower
- (2) Gehl 1060 Harvester Gehl 920 Forage Wagon
- Hesston 7020 Harvester
- Gehl CB800 Harvester w/Attc.

### MOWER CONDITIONERS

- Case IH 8370, 14 ft. Hydro. Swing JD 1460 Disc Mower/Conditioner
- Gehl 2240 Hydro Swing Hesston 420 - SP 12'Windrower

### SKID LOADERS & UTILITY

- Case 1845 Skid Steer Case 580 Super K 4WD Ext. Hoe
- Case 1846C Skid Loader Case 580E 4WD Ext. Hoe
- Gehl 3825 Skid Loader Case 580 SK 2WD Ext. Hoe
- (3) Gehl 4625 SX Skid Loader w/Aux. Hyd.
- Case 1840 Skid Loader Case 450B Crawler/Loader
- NH 455 Skid Loader JD 350 Dozer

### MISCELLANEOUS

- Woods RM 550 60" Finish Mower Gehl 315 Spreader
- Woods 208 Rotary Cutter VanDale Stationary TMR Mixer
- Lilliston 9680 Drill Gehl MF7285 Mixer/Feeder
- NI 382 V Spreader Gehl 1400 Baler

### TRACTORS

- Case 2094 Tractor Case 300 Tractor Deutz 6275 4WD
- Case 400 Tractor w/Loader w/Loader
- AC 5040 Tractor

### KUBOTA TRACTORS

- Kubota L2900 GST Tractor w/Loader Kubota B7200 HSD w/Loader & 60" Mower
- Kubota B1550 DT w/Loader Kubota (2) G1900 w/60" Mower & Bagger
- Kubota B1550 HSD w/Loader & 54" Mower Kubota B6200 DT w/Loader
- Kubota L3600 GST Cab w/Loader & Mower Kubota B2150 w/60" Mower, Cab & Snow Blower
- Kubota B7200 HSD w/Loader

Sales, Parts & Service For...CASE UTILITY  
 GEHL • VICON • KUBOTA • SAME



## QUALITY PREOWNED EQUIPMENT

Visit our web site [abcgroff.com](http://abcgroff.com)

|  |   |  |  |  |   |
|--|---|--|--|--|---|
|  | New Holland 1920 Tractor, 70 Hours, 4WD \$14,500  |  | JD 4100, 20HP, 1997, 4 Wheel Drive, 6 Hours \$8,950  |  | Kubota L5450, 50HP, 1993, 2060 Hours With Loader \$14,900             |
|  | JD 5210, 45 HP, 69 Hours, 1998 \$16,500   |  | John Deere 84, 4 Wheel Drive Wheel Loader \$22,000   |  | JD 5310 55 HP Cab With Sync Shuttle Transmission \$22,900 Ag Tires    |
|  | MF 1160, 37HP, 1995, 4 Wheel Drive With Loader \$16,800   |  | NH 650 Round Baler, Makes 4'x6' Bales, Twine and Net Wrap Price Reduced Now \$12,900               |  | New Holland 359 Grinder Mixer, 150 Bu. with Electronic Scales \$7,800 |
|  | John Deere 920 Mo Co 9'10" Cut, Roll Conditioner, Very Nice \$8,950   |  | John Deere 70, 25 Hp., Gas Good Condition \$3,990  |  | Ford 5610, 62 Hp., 850 Hours, Dual Power, Very Nice \$15,500          |
|  | Farmall 500 Bale Wrapper, 3 Point Mounted \$7,100   |  | COMING IN SOON JD 4440, 1-Owner, 3370 Hr., Power Shift, New Rear Tires, Very Clean \$29,900        |  | Gator 6x4 with Electric Bed Dump, 1997 \$6,250                        |
|  | JD 7200 4 Row Conservation Planter, Frame Mt. Coulter, Vacuum, Insecticide, Single Disc Fertilizer Opener \$8,950 |  | COMING IN! JD 8300 24x6 Grain Drill, 12 ft. DD Opener w/Press Wheels, Small Grass Seed Box \$4,850 |  | John Deere 5310, 55 Hp., 380 Hours with Cab and Loader \$27,500       |



110 South Railroad Ave.  
 New Holland, PA 17557

(717) 354-4191



Email [abcgroff@abcgroff.com](mailto:abcgroff@abcgroff.com)

M-F 7:30 to 5:00  
 Sat. 7:00 to Noon

(800) 346-8319

