

NE Chicken Parts 1&2
ATLANTA, GA.
APRIL 06, 2000

NORTHEAST BROILER/FRYER PARTS - PART I FEDERAL-STATE
Trucklot buying activity was mostly moderate to good. Offerings of bone-in breasts were tight to adequate, however, several buyers chose to forego purchasing at current asking prices. The balance was about adequate to fully adequate. Movement into retail and distributive outlets was generally fair. The market tone was fully steady on bone-in breasts and generally steady on the remainder of items.
ICE PACKED BROILER/FRYER PARTS, DELIVERED TO FIRST RECEIVERS IN POOL TRUCKLOT AND TRUCKLOT QUANTITIES, CENTS PER POUND.
ITEM CURRENT NEGOTIATED TRADING*
BREAST - B/S 130-135 TENDERLOINS 125-130 BREAST - WITH RIBS 65-66 BREAST - LINE RUN 65 LEGS 28-29 LEG QUARTERS (BULK) 17-18 DRUMSTICKS 34-35 THIGHS 28-29 B/S THIGHS 82-83 WINGS (WHOLE) 48-49 BACKS AND NECKS (STRIPPED) 10-12 LIVERS (5 POUND TUBS) 30-35 GIZZARDS (HEARTS) 40-45

INCLUDES NEW YORK CITY METROPOLITAN AREA, NORTHERN NEW JERSEY, MASSACHUSETTS, CONNECTICUT, RHODE ISLAND, AND PENNSYLVANIA (NORTHEAST OF HARRISBURG). * TODAY'S NEGOTIATED SALES AS OF 11:30 A.M.

ATLANTA, GA.
APRIL 05, 2000

NORTHEAST BROILER/FRYER PARTS - PART II FEDERAL-STATE ICE PACKED BROILER/FRYER PARTS, DELIVERED TO FIRST RECEIVERS IN POOL TRUCKLOT AND TRUCKLOT QUANTITIES, CENTS PER POUND
CURRENT NEGOTIATED WTD VOLUME ITEM TRADING* AVG** /LBS
BREAST - B/S 130-135 138.15 448,000 TENDERLOINS 125-130 128.37 73,400 BREAST - WITH RIBS 65-66 73.79 176,320 BREAST - LINE RUN 65 68.86 193,760 LEGS 28-29 33.69 137,640 LEG QUARTERS (BULK) 17-18 18.37 383,709 DRUMSTICKS 34-35 34.06 104,630 THIGHS 28-29 32.78 66,000 B/S THIGHS 82-83 88.98 34,480 WINGS (WHOLE) 48-49 58.48 202,040 BACKS AND NECKS (STRIPPED) 10-12 12.05

42,720 LIVERS (5 POUND TUBS) 30-35 33.84 33,960 GIZZARDS (HEARTS) 40-45 43.78 61,960
INCLUDES NEW YORK CITY METROPOLITAN AREA, NORTHERN NEW JERSEY, MASSACHUSETTS, CONNECTICUT, RHODE ISLAND, AND PENNSYLVANIA (NORTHEAST OF HARRISBURG).
* TODAY'S NEGOTIATED SALES AS OF 11:30 A.M. ** WEIGHTED AVERAGE PRICE OF ALL GRADES AND BRANDS OF PRODUCT SHIPPED, OR TO BE SHIPPED AS OF 1:30 P.M. 05-APR-2000.

National Egg Market
ATLANTA, GA
APRIL 5, 2000

NATIONAL EGG MARKET - AT A GLANCE
Prices continued unchanged throughout the country. The market tone was steady. Retail demand remained mixed, light to good, mostly moderate; and was best for the scattered feature interest. Supplies were adequate with many inventories building in anticipation of seasonal interest. Breaking stock offerings were usually adequate from regular sources, and demand for additional product was unaggressive. Light type fowl remained adequate to fully adequate for immediate needs.

National Grain Market
St. Joseph, MO
Wed Apr 05, 2000

USDA-MO Dept Ag Market News
Daily National Grain Market Summary
Grain and soybean bids rebounded, today, supported by some export optimism and fund buying on the Board. Wheat steady to 3 cents higher. Corn steady to 3 cents higher. Sorghum steady. Soybeans 4 to 6 cents higher. Sri Lanka was reported to have bought 2 million bushels of US soft red winter wheat for April-May shipment but nothing was announced over night. Higher corn prices and the possibility for freezing conditions this Saturday in the central Plains also boosted bids. Corn and soybean bids were higher on good export outlook. Soybean meal prices were also stronger due to improved demand. Indications that China may need soybeans soon added support.

EXPORT SALES: PURCHASER COMMODITY TONNAGE DELIVERY DATE Nothing new to report.

DATE CHANGE YEAR AGO TRUCK BIDS: 04/05/00 04/04/00 04/07/99 Wheat: Kansas City (HRW ORD) 2.57 Unch 2.86-2.87 Minneapolis (DNS 14pct) 3.52 1/4 Up 3 3.40 1/2 Portland (SFW) 2.87-2.89 Up 1 3.21-3.25 St. Louis (SRW) 2.36-2.37 Unch 2.34-2.55

Corn, US 2 Yellow: Kansas City 2.15-2.17 Unch 2.07 Minneapolis 2.10 Up 3 2.00 3/4 So. Iowa 2.17-2.20 1/2 Up 1-2 1/2 2.13-2.14 Omaha 2.06-2.07 Unch NA Soybeans, US 1 Yellow: Kansas City 5.28-5.30 Up 4 4.70 Minneapolis 5.12 Up 6 1/2 4.54 So. Iowa 5.20-5.24 Up 7 4.64 1/2-4.66 Cent. II Processors 5.26-5.38 Up 5 1/2-4 1/2 4.70-4.78
Minneapolis truck wheat - to arrive 20 days

FUTURES: Kansas City (May) Wheat 2.81 3/4 Dn 1/4 3.01 1/2 Minneapolis (May) Wheat 3.24 1/4 Up 3 3.33 1/2 Chicago (May) Wheat 2.56 1/4 Up 1/2 2.

74 3/4 Chicago (May) Corn 2.32 Unch 2.17 3/4 Chicago (May) Soybeans 5.43 Up 4 1/2 4.80

EXPORT BIDS: Barge or rail, Port of New Orleans or North Texas Gulf. Bids per bushel except sorghum per cwt. US 1 HRW Wheat, Ord Protein: 2.86 3/4-2.89 3/4 Dn 1/4 3.17 1/2-3.19 1/2 US 2 Soft Red Winter Wheat: 2.61 1/4-2.62 1/2 Up 2 1/2-dn 1/2 2.78 3/4 Corn: 2.43-2.44 1/2 Up 1-1 1/2 2.37 1/4-2.37 3/4 US 2 Yellow Sorghum: Rail 4.14-4.20 Unch 4.08-4.12 Barge 4.25-4.32 Unch 3.98-4.00 US 1 Yellow Soybeans: 5.49-5.51 Up 2 1/2-3 1/2 4.93-4.94

Morrison's Cove Livestock Hay

Martinsburg, Pa.
Report Supplied by Auction
Monday, April 3, 2000
Hay—Straw—Grain
ALFALFA: 130.00-170.00.
ALFALFA AND GRASS: 155.00-167.50.
GRASS: 147.50.
TIMOTHY: 125.00-155.00.
MIXED HAY: 90.00-102.50.
ROUND BALES: 130.50-152.50.
STRAW: 97.50.
CLOVER: 152.50.
ORCHARDGRASS: 135.00.
WRAPPED BALES: 24.00-30.00.
ROUND BALE FODDER 55.00-57.50.
HAY AUCTION EVERY MON., 12:30 P.M.

Livestock Cooperative Auction Market Of North Jersey

Hackettstown, N.J.
Report Supplied by Auction
Tuesday, April 4, 2000
Hay—Straw—Grain
ALFALFA: 2 LOTS, 2.60-3.50 BALE.
MIXED HAY: 4 LOTS, 2.00-3.00 BALE.
TIMOTHY: 2 LOTS, 2.00 AND 2.10 BALE.
GRASS: 3 LOTS, 2.00-2.30 BALE
MULCH: 1 LOT AT 1.90 BALE
FOCUS POSTS: 2 LOTS, 2 20 14 LOTS TOTAL.

Greencastle Livestock Hay

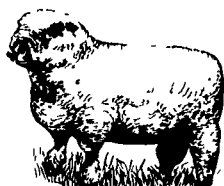
Greencastle, Pa.
Report Supplied By Auction
April 3, 2000
TOTAL TONS: 21 19 TONS OF HAY
ALFALFA 84 00-167 50
MIXED HAY 86 00-175 00
STRAW: 45.00 AND 64 00

Belleville Hay

Belleville, Pa.
Report Supplied by Auction
Wednesday, April 5, 2000
Hay—Straw—Grain
ALFALFA HAY: 102.50-120.00.
MIXED HAY: 92.50-130.00.
STRAW: 70.00-110.00.

Morrison's Cove Poultry & Rabbit

Martinsburg, Pa.
Report Supplied by Auction
Monday, April 3, 2000
ROOSTERS 1.50-6.25.
HEAVY HENS 1.50--4.25.
BANTAMS 1.50-4.75.
GUINEAS: 3.75.
PIGEONS 1.75.
DUCKS 4.75.
MUSCOVY HENS 3.00.
MUSCOVY DRAKES 3.75.
BUNNIES 2.25-7.00.
RABBITS 5.00-11.50.
FLEMISH GIANTS 11.00-16.00.
AUCTION EVERY MON., 7:30 P.M.



Got Pro-Lix?

PRO-LIX BENEFITS

- Balanced Nutrition
- Convenient & Safe
- Reduces Labor
- Saves Time
- Free-Choice Supplementation Allows 24-Hour Availability
- Economical To Feed
- Backed by Research
- Proven Consumption Control

Pro-Lix® liquid Cattle Supplements are now available from your local Pro-Lix® dealership. Feeding your cattle supplements has never been easier. We'll provide you with a quality Pro-Lix® product and feed your cattle for you. Let's get together and get Pro-Lix® working for you in your operation.

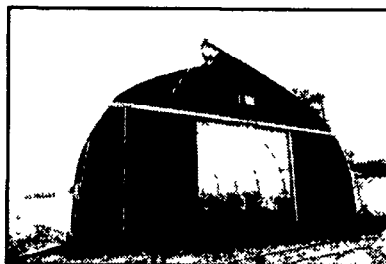
Contact Your Local Dealer Today!
or
For More Information

Contact York Ag Products
1-800-632-1895
email: yorkag@netrax.net



HARNOIS NEW

High Tunnel / Greenhouse Structures for Housing Livestock



- * Quick & Easy to Assemble
- * Buildings from 25' to 35' wide with no concrete foundation required
- * Optional peak & side vents provide natural ventilation

- * Productive
- * Healthy
- * Inexpensive Livestock Shelters



Maintain a Cleaner Better Ventilated Livestock Environment For Less Money!

Contact Tim Weaver
Locust Brook Inc.
Farm & Greenhouse Supply

Manheim, PA
1 (800) 248-4418 (717) 665-4821 (717) 314-8795 (Car)
www.agrotech.com

HAY, STRAW & GRAIN SALE

Every Thursday at 12 NOON

Vintage Sales Stables, Inc.

(Rt. 30, Paradise, PA)
For more information
(717) 442-4181
(717) 768-8204

NOTICE: FARM OWNERS

Goodville Mutual Is One of the Top 5 Farm Insurance Companies in Pennsylvania

WANT TO KNOW WHY?



Liz Martin
Martin Insurance Agency

459 C N George St
Millersville PA 17551
(717) 872-7756
Toll Free
1-877-791-5235
www.martininsurance.com
Affordable insurance for farm, home, vehicle, and small business

Agent for Goodville Mutual

MARYLAND
S/S Farm & Home
Sykesville, MD
410/795-1234

Heisey Farm Service
Mt. Joy, PA
717-653-1568

Seiple & Son
Easton, PA
610/258-7146

NEW JERSEY
Woodstown Ice & Coal
Woodstown, NJ
856/769-0069

Johnson Liquid Feed
Tunkhannock, PA
570/836-1226
570/836-4500
1-800-475-4492

Tyrone Milling
Tyrone, PA
814/684-3400

Watson's Feed Service
Mercer, PA
412/662-5219

PENNSYLVANIA
Bedford Farm Bureau
Bedford, PA
814/623-6194

Martin's Ag Service
New Holland, PA
717/354-4996

Whitmoyer Liquid Feed
Myerstown, PA
717/933-5011

Brookland Mills
McVeytown, PA
717/899-6772

Ross's Feed & Grain
Quarryville, PA
717/786-7361

Farmers Union Co-Op
Greencastle, PA
717/597-3191

Dayton Feed Mill
Dayton, PA
814-257-8812

Susquehanna Seed and Feed
Mifflinburg, PA
570/966-2580

Franklin Feed & Supply
Chambersburg, PA
717/264-6148

G&R Liquid Feed
Newville, PA
717-776-4763

H.R. Wentzel
Bridgeport, PA
717/789-3306

Detrich Elevator
Williamson, PA
717/369-3724