

Annual Cattlemen's

(Continued from Page A26)

Virginia. Nat Shoemaker of Buffalo Mills received roses in appreciation for all she has done for the Pennsylvania Simmental Association. The PA Simmental Association elected her husband, Bill, as president.

PCA intern Liz Smith announced the 2000 Cattlemen's Queen and Princess. Last year's queen, Jessi Leister, chose to run again this year and received the crown for 2000. Jessi is the daughter of Michael and Donna Leister of Biglerville, Adams County. PCA princess will be Penn State senior Stephanie Biggerstaff of

Belle Vernon, Westmoreland County. Stephanie is the daughter of David and Cecelia Biggerstaff.

Smith also announced the scholarship winners. Kevin Harvatine of Thompson, Susquehanna County, earned the Ivomec Generations of Excellence scholarship. Harvatine is a junior at Penn State and a member of the 2000 National Quiz Bowl team. Harvatine was one of only ten members selected nationwide as a Collegiate Livestock Leader.

The Psizer scholarship went to Travis Reid of Dallastown. Reid is a sophomore at the University of Delaware. William Grant Coleman

Farmers Join Forces In Washington

JAYNE SEBRIGHT
Lancaster Farming Staff
MESHOPPEN (Wyoming Co.) — A delegation of 40 people from northeastern Pennsylvania, made up of farmers and FFA students, recently traveled to Washington, D.C., for the Rally for Rural America.

The Pennsylvania delegation joined farmers from all over the country who traveled to Washington, D.C., to speak out against low farm prices.

Prior to the Rally, the delegation delivered written testimonies to 100 senators and 435

representatives to inform them about the ag crisis and request meaningful reform.

The packet included testimonies from farmers, consumers, religious leaders, and others concerned about the current low farm prices. The trip is part of the group's ongoing efforts called "Dairy Action 2000."

"We're hoping since this is an election year that we will engage political candidates in serious discussion about ag issues," said Gerald Carlin, a dairy farmer from Meshoppen who is involved with Dairy Action.

"Dairy Action 2000" started in January this year when several farmers joined together to encourage change in the milk pricing system.

The group has been involved in picketing at various milk plants and vocalizing their concerns through other methods during the past two months. They also met with the Attorney General at Keystone College recently where 20 people gave testimony about the current milk prices.

As part of "Dairy Action 2000," the group is recommending that a temporary floor price of \$15.50 per hundredweight for all milk be set immediately. The temporary floor price should stay in affect until a more permanent plan can be developed.

"If the \$15.50 floor price isn't attainable, then we want to set a \$3 to 4 Class I differential that will be pooled nationally," said Carlin.

The group is also requesting a full independent public accounting of the Chicago Mercantile Exchange and NASS surveys.

"These methods do not seem to be an adequate way of measuring milk," said Carlin.

"For example, there were higher beginning stocks of dairy in June and July than there are now," said Carlin. "Imports are also a big concern because it doesn't take much for these things to mess up the system."

The third request that the group is making is that all publicly paid university dairy economists and extension agents who publish milk production figures must also publish total marketing, commercial disappearance, and import figures for milk.

The group also wants congressional hearings held at the congressional district level so that farmers can present their ideas for real solutions.

"There needs to be a national referendum on dairy plans where every dairy producer can vote on proposed plans with no block votes," said Carlin.

"Most cooperatives were created under the Camper-Volstead Act, allowing them to collectively bargain for fair prices," said Carlin. "But we believe that most cooperatives in general have neglected this responsibility."

The group is also planning to meet with farmers from several other states to determine short-term and long-term solutions for the current low prices.

The group is hoping their efforts will make a difference.

"Progress is always awfully slow, but this is much more than just farm prices. It affects rural America," said Carlin. "There doesn't seem to be enough concern about the problem. We need more farmers to get involved."



Pennsylvania Cattlemen's Association queen Jessi Leister, Adams County, welcomes princess Stephanie Biggerstaff, Westmoreland County. Leister begins her second term as queen.

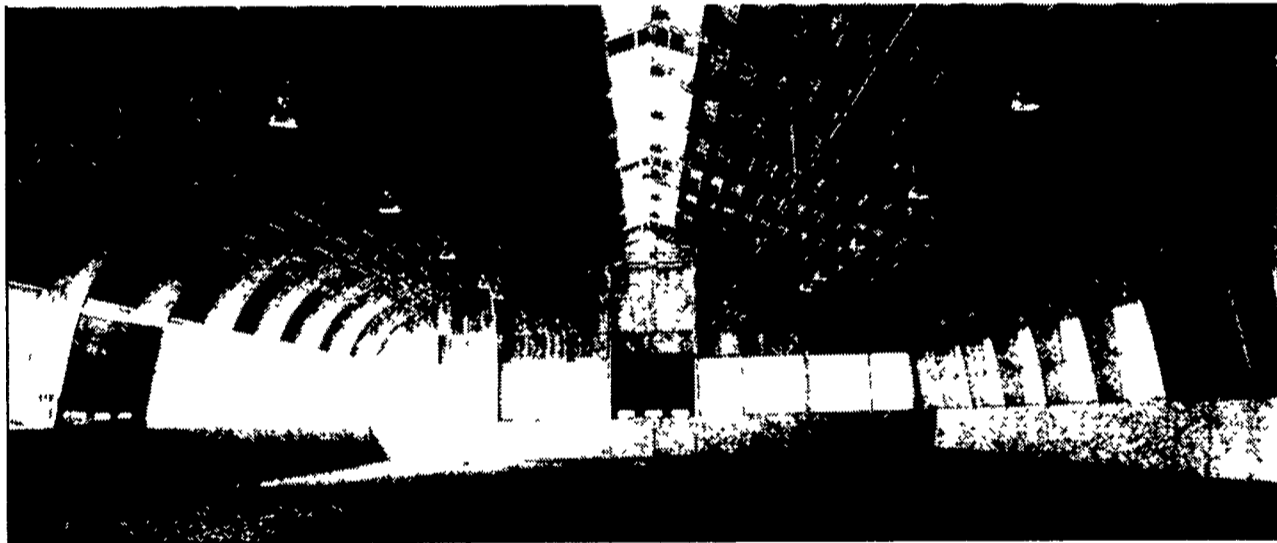
came forward to receive the \$500 PCA scholarship. Coleman, from Elmer, NJ, is studying Ag Business at Penn State.

Paul Slayton, executive director of the PA Beef Council, congratulated the award winners and then called Bill McCoy to the podium for the Servant Leadership award. He commended McCoy for his quiet, strong leadership as president of the PCA and for building a bridge from the PCA to the PA Beef Council. McCoy has served as PCA president for the past two years and was re-elected president later during the Beef Expo.

PCA members elected five new directors at the banquet. Elected to serve were Kathy Allen from Saxonburg, Larry Bullis from Gettysburg, Wayne Hoffman from Dover, Robert McQuiston from Stoneboro, and Frank Stoltzfus from Elizabethtown.

The following directors will serve as officers for 2000 - Bill McCoy, president; Terry Shearer, vice president; Ray Grimes, secretary; and John Myers, treasurer.

Riding
Arena



Over 40 years quality products & materials...
Let us help you with your building needs!

Ph. (717) 866-6581

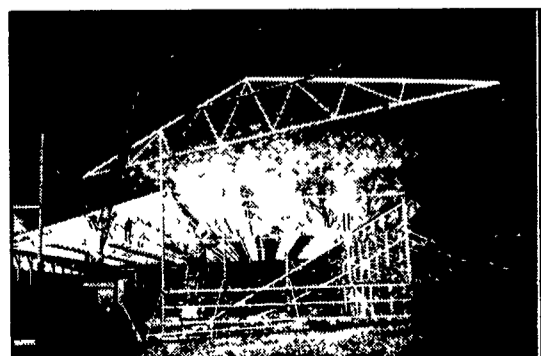
FAX (717) 866-7237

Stables



- GLU-LAM ARCHES
- GLU-LAM BEAMS
- GLU-LAM TREATED POSTS
- ROOF TRUSSES
- FLOOR TRUSSES
- T&G AND V-GROOVE DECKING

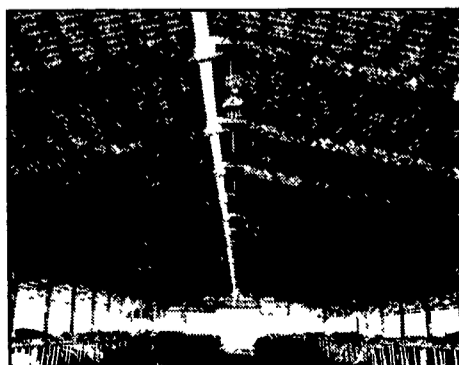
701 E. Linden St., RICHLAND, PA 17087



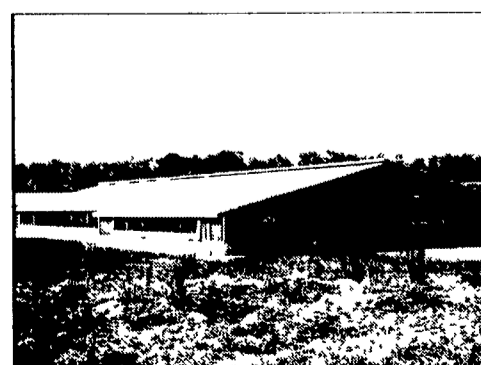
Trusses for Commercial or Residential



"The Sign of Quality In Engineered Timber"



Free Stall Barn Interior



Free Stall Barn Exterior