

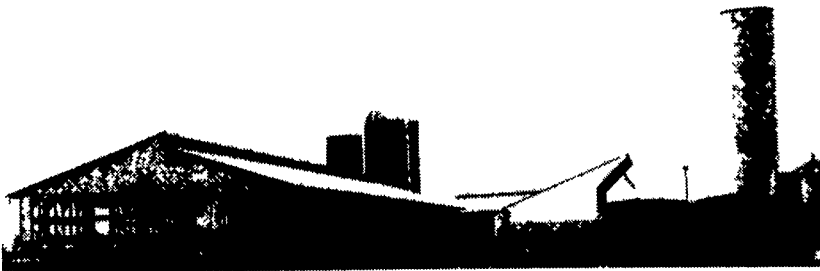


Helping You Manage A Clean and Healthy Environment

477 East Farmersville Rd.
New Holland, PA 17557
(717) 355-2361



Jake King - Sales/Project Manager

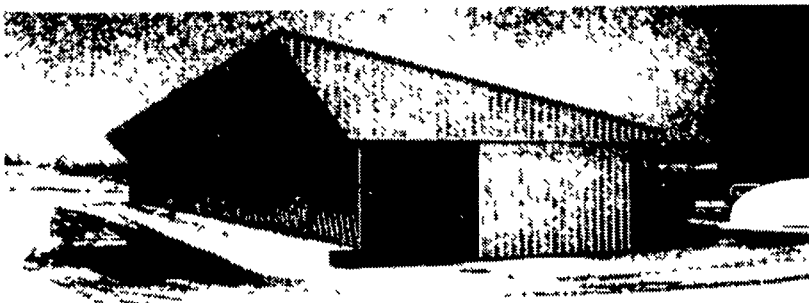
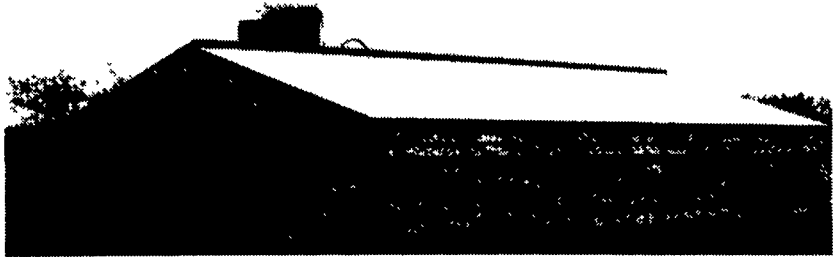


Slatted Beef Barn

- 8000 lb. Steam Cured Slats For Longer Life
- Special Hole Design Gives Animals Better Footing

Slatted Freestall Barn

- No Opening and Closing Gates Or Machinery Needed To Scrape Alley
- Lower Production Costs Through Reduced Labor



Slatted Heifer Barn

- Better Disease & Parasite Control
- Cleaner & Drier Animals

Bunker Silos

- 4', 5', 8' & 12' Heights Available
- Concrete Feed Bunks
- Concrete Posts & Beams

