



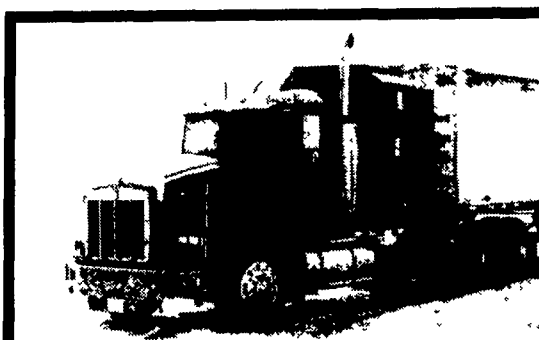
'95 FORD F700 18 Ft. FLATBED
 Cummins Diesel, 6 Spd., A/C,
 26,000 GVW, 170,000 Miles, Black
\$16,995
Call 717-336-3130



1984 INT MODEL 1954 DT 466
 35,000 GVW, 8 Ton S.S. Ag Craft Two
 Compartment Tender with Stainless Steel
 Roll Tarp, 8" Hydraulic Auger
\$12,000 • CALL 570-726-4525

35 ton detachable, 20' deck, non-weldline, major overhaul, deck, wiring, lights, tires, etc. over \$18,000 invested. \$14,000 must sell! 610-353-9068
 Tree Truck, 1988 Dump, Crew Cab, Exc. \$4200; 12' Chipper \$2500
 717-328-5465

F450 Super Duty 8' dump body, 1990, 58,000 mi, 460 engine, 5-spd, new paint, new floor, \$10,750. 215/258-1127.
 1980 R Model Mack Tandem Axle Tractor, Good Mech Cond. 26K on Inframe, Overhaul \$8000. 610-562-2594



1992 KWT 800, 3406, 425 HP. Jake, 15 Speed, Air Ride, Wet Line, 11x24.5 Rubber
\$22,500 - (717) 733-7226

PRE-OWNED CARS PRE-OWNED TRUCKS PRE-OWNED MPV'S

'93 FORD T-BIRD V-6, A/C, A/OD, Power Equipment	'98 FORD F150 S/C 4x4 XLT 8 ft Bed 20,000 Mi A/OD 8 Cyl PB PS PW PDL Cruise, Tilt, AM/FM Cass A/C "Off Road Package"	'97 CHEVY BLAZER LT 2 Dr, A/C, A/OD, 49,000 Miles, Green Sharp Unit
'98 DODGE NEON SPORT 2 Dr, AT, A/C Sunroof, 1-Owner, 30,000 Miles	'96 FORD F150 S/CAB, XLT Conversion, 20,000 Mi A/OD, 5.0L 8 Cyl PB PS PW, PDL Cruise, Tilt, AM/FM Cass, A/C, Leather Interior	'96 JEEP CHEROKEE COUNTRY, 4 Dr, 4x4 29,000 Mi, A/OD, 4.0L 6 Cyl, PB, PS, PW, PDL, Cruise, Tilt, AM/FM Cass, A/C, "Keyless Entry"
'94 AUDI 90S SDN. A/OD, 2.8L 6 Cyl, PDL, Cruise, Tilt, AM/FM Cass, Leather Interior, "Electric Sunroof"	'99 FORD F350 S/CAB 4x4 XLT 7,000 Mi, A/OD, 6.8L V-10, PB, PS, PW, PDL, Cruise, Tilt, AM/FM CD/Cass, A/C, "Off Road Package"	'97 FORD AEROSTAR XLT EXT. AWD 22,000 Mi, A/OD, 4.0L 6 Cyl, PB, PS, PW, PDL, Cruise, Tilt, AM/FM Cass, A/C
'98 PONTIAC GRAND AM 2 Dr Cpe., 4 Cyl, AT, A/C, 30,000 Miles, Bright Red	'97 CHEVY S-10 SUPER CAB V6, A/C, 5 Spd, 1 Owner, 53,000 Miles	'94 CHEVY CONVERSION VAN 24,000 Miles, Dual A/C, Power Seat, Bed, TV & Much More
'98 CHEVY CAVALIER 2 Dr, 20,000 Mi, 5 Spd, 4 Cyl, AM/FM Cass, A/C	'98 FORD F150 4x4 XLT, A/C, V-8, Off-Road Pkg, 5 Spd & More	'97 FORD EXPEDITION 4x4 Eddie Bauer, 28,000 Mi, A/OD, 5.4L 8 Cyl, PB, PS, PW, PDL, Cruise, Tilt, AM/FM Cass, A/C "Leather Interior"
'96 OLDS ACHIEVA SL 2 DR CPE 23,000 MI, 5 Spd, 2.4L 6 Cyl, PDL, Tilt, A/C, AM/FM	'99 FORD F350 S/C XLT, DUALY 4x4 22,000 Mi, 5 Spd, 7.3L Turbo Diesel, 8 Cyl, PB, PS, PW, PDL, Cruise, Tilt, AM/FM Cass, A/C	'98 FORD EXPLORER SPT, 2 Dr 4x4, 22,000 Mi, A/OD, 4.0L 6 Cyl, PB, PS, PW, PDL, Cruise, Tilt, AM/FM CD Player/Cass, A/C
'93 CHEVY LUMINA Z-34 Coupe, V6, A/C, A/OD, Power Equipment	'95 CHEVY 2500 4x4 Extended Cab, Diesel, Auto Trans, A/C, Silverado	'88 FORD E150 CONVERSION Van, Dual A/C & Heat, 4-Chairs, Seat Bed & Much More
'98 MERCURY TRACER LS 4dr 27,000 mi., A/OD, 4 Cyl, PB, PS, PW, PDL, Cruise, Tilt, AM/FM Cass, A/C	'97 FORD RANGER XLT 4x4, S/CAB 35,000 Mi, A/OD, 4.0L 6 Cyl, AM/FM Cass, A/C	'98 TOYOTA RAV 4 4x4 22,000 Mi, A/OD, 4 Cyl, PB, PS, PW, PDL, Cruise, Tilt, AM/FM CD Player/Cass, A/C, Electric Sunroof

ENGLE-RISSINGER AUTO GROUP

FORD * LINCOLN * MERCURY * JEEP
 Midway Between Halifax And Millersburg • 717-896-3421 • 1-800-242-8075
 HOURS: Monday-Friday 8:30 AM - 8:30 PM; Saturday 8:30 AM - 3:00 PM

DIESEL DROP INS
 6 9-7 3-320B-CAT
 MARINE ENGINES

Engine TRANSMISSION WAREHOUSE, Inc.

REMANUFACTURED ENGINES AND TRANSMISSIONS

LOCAL 717-896-2481

2857 Peters Mtn Rd
 Halifax, PA 17032

FAX: 717-896-2483

1-800-507-4359

WE ARE #1

DON'T FUSS! CALL US!

ENGINES ON SPECIAL ARE CASH & CARRY DELIVERY AVAILABLE

82-87 2.8 RWD \$999 GM	87-91 VIN N 302 \$1,099 Ford	80-85 350 2-B \$949 GM	351W Carb w/o Rollers 77 87 w/HO \$1,099 Ford	87-91 4.3 VIN Z \$1,049 GM
---------------------------------	---------------------------------------	---------------------------------	--	--

NATIONWIDE AND CANADA

CALL US

FOR YOUR INSTALLATION NEEDS

MILE WARRANTY may vary

BEST WARRANTY IN THE INDUSTRY

WARRANTY 36 MONTHS 100,000 MILES

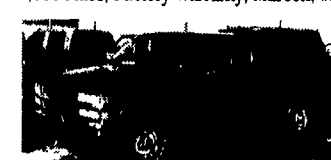
FREE TOWING WITHIN 25 MILE RADIUS W/ENG. OR TRANS. INSTALLATION



99 FORD F350 CREW CAB DUALY
 Power Stroke Diesel, 4x2, 6 Spd, XLT Lariat, Most Options, A/C, Cass, Alloy Wheels, Red, 8,300 Miles, #F931



99 FORD F350 CREW CAB 4x4
 Short Bed, Tinton V10, AT, XLT, Most Options, 8,000 Miles, Factory Warranty, Maroon, #F880



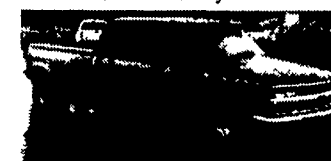
95 CHEV. K2500 EXT. CAB 4x4
 6.5 Turbo Diesel, Silverado, AT, A/C, Most Options, Dark Green Metallic, 72,000 Miles #C557



94 CHEV 1500 EXT. CAB 4x4 SILVERADO
 AT, A/C, Most Options, 65,000 Miles, Alloy Wheels, Leer Cap, Short Bed, Black #C559



96 FORD F250 CREW CAB 4x4, Short Bed, Power Stroke Diesel, AT, A/C, Most Options, 63,000 Miles, Dk. Blue, Alloy Wheels #F923



94 CHEV K3500 CREW CAB DUALY 4x4
 6.5 Turbo Diesel, AT, A/C, Silverado, Most Options, 94,000 Miles, Blue & Silver #C548



97 FORD F250 SUPER CAB 4x4
 Powerstroke Diesel, 5 Speed, XLT Pkg, Alum. Wheels, 32,000 Miles, White w/Grey Int. #F913



98 DODGE RAM 2500 QUAD CAB
 LE Pkg, Cummins Turbo Diesel, AT, AC, PS, PB, PW, PL, C, T, Chrome Wheels, Aqua & Silver, 18,000 miles, Excellent Cond., #D302



96 FORD F250 XL, Trm 4x4, Powerstroke, Diesel 5 Sp, A/C, AM/FM Cass, Dual Tanks, 83,000 mi., Red, #F909



95 FORD F350 4x4, Power Stroke Diesel, XLT, AT, A/C, Most Options, CD Player, Power Angle Plow, Black & Silver, 58,000 Miles, #F934



94 DODGE RAM 2500 4x4
 Cummins Turbo Diesel, AT, A/C, Most Options, 73,000 Miles, Black, #D308



92 FORD F350 CREW CAB DUALY, 7.3 Diesel, XLT, AT, A/C, Most Options, 92,000 Miles, White, #F933



2000 FORD F350 CREW CAB DUALY 4x4
 Power Stroke Diesel, XLT, AT, A/C, PS, PB, PW, PL, C, T, CD Player, LS Rear, Alloy Wheels, White w/Tan Leather, Only 3,000 Miles, #F900



96 DODGE RAM 2500 ST CLUB CAB 4x4
 Cummins Turbo Diesel 5-Spd, Cass A/C, 68,000 Miles, Black D305



96 DODGE RAM 2500 CLUB CAB 4x4
 Cummins Turbo Diesel, AT, A/C, Cass, Red & Silver, 44,000 Miles, #D306



96 FORD F350 CREW CAB DUALY
 Power Stroke Diesel, Conversion Pkg., AT, A/C, Full of Options, 106,000 Miles, Dk Red #F924



95 DODGE RAM 2500 CLUB CAB 4x4
 Cummins Turbo Diesel, AT, A/C, Laramie SLT, Most Options, 87,000 Miles, White #D310



95 DODGE RAM 2500 CLUB CAB 4x2
 Cummins Turbo Diesel, Laramie SLT AT, A/C, Most Options, Red & Silver 70,000 Miles, #D307



(2) 95 GRUMMAN GMC 14 FT. STEP VANS
 AT, 6.5 Diesel, Very Nice Condition \$12,995 ea.



88 FORD F250 SUPER CAB 4x4
 7.3 Diesel w/ATS Turbo, XLT, 5 Spd, 104,000 Miles, Very Good Condition, Brown & Tan #F926



94 CHEV 3500 H.D. w/9 FT. UTILITY BODY, 6.5 Turbo Diesel, AT, A/C, AM/FM, 15,000 GVW, 31,000 Miles, White



99 FORD F350 SUPER DUTY QUAD CAB 4x4 DUALY
 Power Stroke Diesel AT XLT Lariat, (Most Options), CD Player, 17,000 Miles Black w/Sandalwood Bottom #F893



97 FORD F350 SUPER DUTY QUAD CAB 4x4 DUALY
 Power Stroke Diesel AT XLT Lariat, (Most Options), CD Player, 17,000 Miles Black w/Sandalwood Bottom #F893



97 FORD E350 CLUB WAGON, 12 PASSENGER, 5.4 V8 Dual A/C, Most Options, 41,000 Miles, Dk Green #F879



97 DODGE RAM 3500 CLUB CAB DUALY 4x4
 Cummins Turbo Diesel Laramie SLT AT A/C Most Options Power Seat White 56,500 Miles #D309



99 FORD F350 SUPER DUTY QUAD CAB 4x4 DUALY
 Power Stroke Diesel AT XLT Lariat, (Most Options), CD Player, 17,000 Miles Black w/Sandalwood Bottom #F893



90 FORD F250 SUPER CAB 4x4
 7.3 Diesel, 5-Spd, Centurion Conversion Pkg A/C, Most Options 120,000 Miles Blue & Silver (Very Nice) #F929



95 FORD F350 CREW CAB 4x4
 Power Stroke Diesel XLT AT A/C, Most Options, CD Player, Alloy Wheels White 203,000 Miles, Looks and Runs Good



99 FORD F350 SUPER DUTY QUAD CAB 4x4 DUALY
 Power Stroke Diesel AT XLT Lariat, (Most Options), CD Player, 17,000 Miles Black w/Sandalwood Bottom #F893



99 FORD F350 SUPER DUTY QUAD CAB 4x4 DUALY
 Power Stroke Diesel AT XLT Lariat, (Most Options), CD Player, 17,000 Miles Black w/Sandalwood Bottom #F893

OVER 120 TRUCKS
 Preferred Warranties Available on Most Trucks

Bobby Gerhart's Truck World

Mon. - Fri. 9-8, Sat. 9-3

2400 E. Cumberland St. Rt. 422 Lebanon, PA 17042 717-273-7995