

PAYING UP TO \$2.50/sq.ft. for wide walk smooth attic floor. We remove. Also paying \$.50-\$1.00 for pine and oak siding 1" & thicker. 800-765-3966.

Antique building materials, beams, wide pine boards, flooring, doors etc. 717-249-2304.

WANT: Old barns and mushroom houses to dismantle for building material. 610-367-8193.

Antique heart-pine resawn flooring-kiln dried, T&G, custom widths & lengths, wide boards available. Also resawn antique oak & chestnut flooring & salvaged original pine flooring. 570-374-7122, fax 570-374-2368.

**DON'T IGNORE IT**

**RESTORE IT!**  
Masonry/Restoration specializing in restoring old stone/brick houses and barns  
Also doing all types of Stone work

**J&J Restoration**  
717-768-0549

**Koser Building Materials**

FOR YOUR HOME IMPROVEMENT NEEDS

LOCATED NORTH OF ELIZABETHTOWN  
OPEN MON - FRI 8 TO 6, SAT 8 TO 3

- Kitchen Cabinets
- Plywood & Waferboard
- Asphalt Roofing Shingles
- T-1-11 Siding
- GP Insulation
- Railroad Ties
- Shutters
- Replacement Windows
- Vinyl Siding

**Rolled Roofing**  
36" \$8.00/roll  
18" \$7.00/roll

717-367-0283

**\$ WHOLESALE \$**

**1/2" to 8" PIPE 1/2" to 8"**

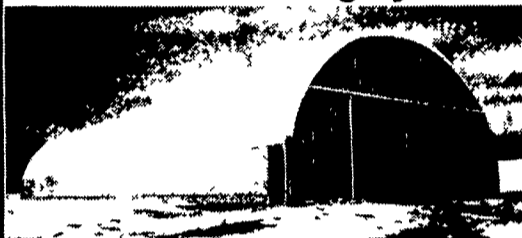
Prime, secondary, structure pipe  
Farmers, Manufacturers, Fabrication  
— Will Cut To Your Size Needs —

STEEL TUBING  
1 1/2" Sq 3 1/2" Sq 2"x2" Sq 2"x4" Rect  
2 1/2" Sq 4"x4" Sq 3"x3" Sq 3"x2" Rect  
20' to 24' Lengths/1/8" to 1/2" Thick

**BRICKER'S PIPE YARD**

717-261-0095 1970 Frank Road  
Chambersburg, PA 17201

**Alternative Building Systems**



Single arch for smaller models or Truss frame up to 126' wide  
Pony wall or free standing or curtain style for livestock. Ridge vent available.

- Made of tough, durable fabric available in various weights
- 10-15 year pro-rated warranty on fabric
- U.V.I. protected for extra long life
- Galvanized steel arches, 3 year limited warranty
- Can be set on 4' wall for hogs & sheep or 6' pony wall for cattle

A Shelter for all types of livestock, Dairy barns, Calf barns, Feed Storage & Farm-equipment storage, Manure pits, Manure yards, Bunk silos, etc. Excellent warehousing for industry. Temporary Service Areas on Construction Sites  
**John Edward Weaver 570/672-2213**

**A & E ENTERPRISES, INC.**

Specializing in Agricultural & Commercial Buildings

**STEEL BUILDINGS & POLE BARN**

MATERIAL PACKAGES TO FULL CONSTRUCTION

**SPECIAL PRICING PACKAGES**

**FREE ESTIMATES!**

28 Evergreen Road Phone: (717) 274-3488  
Lebanon, PA 17042 Fax: (717) 274-3781

**INSULATION**

Featuring **TRI-PLY CEILINGS**

Great for Shops & Ag Buildings  
• Low Cost • Sound Reduction  
• Durable

Also -

**Blown Ceiling Insulating Wall Insulation**

Cellulose Wall Spray or Fiberglass Batts

Call for **FREE** Estimates

**WEAVER INSULATORS**

Myerstown, PA

717-866-8942 800-887-8818

Martinsburg, PA 814-793-3936

**Zimmerman's Roofing** 35 RIDGE ROAD NEWVILLE, PA

**BUILDING PRODUCTS**

- Metal Roofing & Siding Sales
- Specializing in Custom Trim

PHONE 1-800-782-2712 -717-776-5951

**GRABER SUPPLY**

491 Gap Newport Pike Atglen, Pa. 19310 800-964-1550 610-593-3500

... LOCATION...  
20 miles East of Lancaster, PA on Hwy 41 or 27 miles North of Wilmington, Delaware

**Post & Frame Building Materials Metal Roofing Sale**

29 Ga. Choice of Colors..... \$46.95 Sq.  
Ask About Our Discounted #2 Metal and Liner Panel  
We Also Sell Complete Building Packages With or Without Labor.

- 26 & 29 Gauge
- Window Doors
- Insulation
- Overhead Garage Doors
- Electric Openers
- Trusses

**WE DELIVER**

**SPECIAL INVENTORY CLEARANCE**

**CONCRETE PIPE**

- From 12" to 96" diameter, 8' or 12' sections
- Limited supply of 10" to 27" diameter, 4' section
- Limited supply of flared end sections

**New Holland Concrete**  
717-354-1200  
1-800-543-3860

Ask for Building Materials Rep.  
Mon.-Fri. 6:00AM-4:30PM

**An Important Message From Quality Fencing & Supply**

Our customers are our most important consideration!  
Over the years Quality Fencing & Supply has become a leader in vinyl manufacture and has developed a strong dealer network. For Fast, Efficient, and Friendly service after April 1<sup>st</sup>, please call on our dealers for all retail sales of fencing and related products.

Call Quality Fencing & Supply at 800/633-7093 for the name of your nearest dealer.

**Relax... Enjoy Life!**

With a Beautiful, Maintenance Free, Poly Lumber Deck.

- No painting necessary!
- No maintenance!
- Environmentally friendly.
- Free estimates.

**Quality First!**

Visit our showroom displays.

**UNIVERSAL Poly Products, LTD.**  
Division of Quality Fencing and Supply, LLC

181 Jalyn Drive  
New Holland, PA  
717/355-7141 • 800/633-7093