

**1A CONSTRUCTION EQUIPMENT**

1996 Bobcat 853, 1200 hrs, auto level, heat, enclosed cab, BOSS system, \$14,000 obo. 717-371-5852

1980 Elgin Whirlwind II sweeper, int. chassis, dual control, dual brush, everything works, \$7500. 6V92T w/PTO, complete rebuild, 0 hrs, \$6500. 8x10 bin 1/4" w/legs, \$1300. 8x10 bin 1/4" no legs, \$800. 717/249-3227 7-5.

JLG scissor lift, 35', 7x14 deck, \$3,250 OBO. 215-343-0156.

Reed 4 wheel cutter for 6"-8" dia pipe, \$425; 4"-6" pipe \$325; 2'x2' sfl box for dynamite \$100. 215-886-5000.

Komatsu D31P-18 dozer w/tilt, 6-cyl engine, 1989 model, new track chains, \$13,750. 717/445-6156.

Drott excavator \$8,500 OBO 6-10 P M 973-835-0535

Shark 2000 PSI pressure washer, 5.5 HP Honda interchangeable spray nozzles, good cond. \$599 717-626-3333 Ask for Rental Dept.

Trench Master trencher, 5.5 HP, Honda, digs 2'x7' trench, also w/bed shaper & stump grinder attachments \$499 717-626-3333 Ask for Rental Dept.

Concrete travel machine-5HP 36/ Marshalltown, older machine in good cond. \$299 717-626-3333 Ask for Rental Dept.

Logsplitter, 5.5HP Honda, vertical 16 ton splitter, highway durable, very good cond. \$1099. 717-626-3333. Ask for rental dept.

JD 660 H.D. Tiller, 60" 3pt good cond. \$1200 717-626-3333 Ask for rental dept.

1985 Case 580 Super E backhoe, cab, E/hoe, 4700 hrs, excel cond, \$18,000 obo. 610-876-1094

Construction Equipment - Dismantling Most Makes & Models- Dozers, Loaders, Backhoes, Excavators, Scrapers, Graders, & More. Balanda Equipment, Inc, Rt 29, Palm, PA, 18070. Toll Free 1-800-322-8030, Fax 215-679-8727.

Tag-along Trailer 3 axle, 12 ton, 8x25' ramps, \$2,350. 215-343-0156.

Cat 955H Traxcavator 60A Series, 75% UC, enclosed cab, runs well, best offer. 570/430-6057, 570/563-1704.

87 JCB 1400B, 2WDR, Erops w/glass 100%. Ready to work, great condition, 3700 hrs., \$11,000 (215)822-5537.

Case CK loader, engine done over, first \$5200. 610/252-7292.

JD 450-C crawler loader, 4n1 bucket, ROPS, new cutting edge & teeth, 325 hrs on U/C, serviced & ready to go, \$13,500. 610-459-9211.

NH 885 LX skid steer, 1100 hrs, 1996, \$16,500. 410-823-2640

Cat 941 track loader, 4N1, good cond, \$10,500. JD 9300 hoe attach, \$1500 410-823-2640

Case track ldr, D350 dsl, runs great, new steering & clutches, \$7,800 OBO. 610-987-9816.

Trojan 254 tire loader, 471 Detroit VG, \$4500. Cat 955 12A track loader, VG, \$4500 973/992-8759.

1985 JD 570- A grader, 3200 org hrs, exc. cond, \$37,000 firm. Call Troy 717-872-8888.

1985 Rodgers 35-50 ton lo-boy trailer, flip 3rd axle, wetline system, good cond, \$12,500 firm. Call Troy, 717-872-8888.

JD 'MT' w/2 bottom plow, exc cond, \$3,000. Avery tractor w/4 cyl WC eng. 610-944-1288.

Ford 3500 backhoe loader, full cab, ready to work, \$8,000. 610-252-7292.

Taken off of snow removal. 1981 Cat 950 wheel loader, SN31K2632, motor work & accessories done \$13,000, tires foam filled, heater rest of machine good to good, \$25,000 firm. 908/236-2969.

**JLG LIFTS**

40 FR, Dual Fuel LP, Liquid Gas, 8' Basket, Rotator Basket, Paint Good, Engine VH4D, Tires Good, SN 755989, SN 731916, SN 747568  
**JOEL-BITT TOOL RENTAL INC.**  
Ph: 717-328-2686  
Fax: 717-328-3327

**SPRING DISCOUNTS - BUY NOW!  
QUALITY PRE-OWNED EQUIPMENT  
FROM BINKLEY & HURST, INC.**

**1993 Case 580 Super K TL Backhoe**



UT 4480

4x4 with Cab and Extenahoe with Wobble Stick Controls, 2741 Hours, Good Rubber, Bolt on Loader Bucket Edge, Good 19 5Lx24 Rears, Optional Lights Heavy Duty 30 Wide Trenching Bucket, Serviced & Ready to Work  
**\$34,800  
No Trade \$32,800**

**New Holland LB620 Articulated 4-Wheel Drive Backhoe & Loader Tractor**



UT 4455

Water Cooled 48 HP Diesel Engine 2 Speed Hydrostatic Pedal Control, Loader with 4-in-1 Bucket, Approx 11 Foot Digging Depth Great Cemetery Machine for Digging In Close Areas  
**\$14,850**

**Cat 955L, 130 HP**



UT 4492

70% Good U C, Brush Sweeps to Front of Hood, 2 Yd Loader Bucket, Good Edge and Teeth, Loader Pins Line Bored & Rebuilt to New Condition, Approx 17 Ton

**OTHER USED CONSTRUCTION EQUIPMENT MACHINES**

**Wacker Tamper (Jumping Jack) BS 60Y Very Good Condition \$1,750**

**Case 1150B Crawler Loader Newly Rebuilt Engine Approx 13 Ton Weight Class, Case 451 BD Diesel Rated 105 HP, 1-3/4 Yd Bucket \$16,000**

**Need A Rugged Tough Backhoe Loader For Your Farm At An Economy Price? Take A Look At This One!**



UT 4475

JCB with Cab & Power Shuttle with Cab and Extra Reach Backhoe  
**Only \$10,800**

**Need a Loader to Get Something Done? Come and Check Out This 4 Yd. Loader**



UT 4451

Good Solid Tight Machine with Cab, Rated 215 HP, 2 Speed Forward & Reverse Shuttle, Good Matched 40% Tread Tires, Fiat Allis FR20 Articulated Loader  
**ONLY \$19,800  
Ask About Financing**

**1984 Case 586D Diesel Forklift**



UT 4368

2WD, 21' Mast, Good Rubber, Power Shuttle Reverser  
~~\$16,300~~  
**No Trade \$15,800**

**Cat 955L**

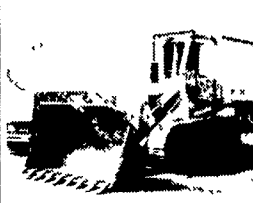


UT 4493

1974 Model with Newly Rebuilt Engine and Turbo, 75% New U C Almost New Edge & Teeth, Approx 17 Ton  
**Ready for Work!**

**Case 850C 1982 Model**  
4 Post ROPS Powered by Case 336 75 HP Diesel, P Shift and Pedal Steer & Shuttle Shift, 2 Speed Individual Track Feature, 1-1/2 Yd Bucket, 10 Ton Weight Class, Nice Machine (UT 4502)  
**\$16,700**

**Fiat Allis FL14C Crawler Loader**



UT 4498

150 HP Power Shift, 3 Speed Forward x Reverse Shuttle, 80% New U C with Bolt on Sprocket Segments, Pedal Steer, 2 62 Yd Bucket with Good Edge & Shanks with New Hensley Teeth (Serviced) 20-21 Weight Class - Ready For Work!  
**Only \$16,800**

**Economy Case 580C Cab 4-in-1 Clam Bucket**



UT 4479

Tractor Loader Backhoe with Power Shuttle Reverser  
**Only \$12,800**

**John Deere 644 Articulated Loader with Cab**



UT 4398

Approx 131 HP with 4-in-1 Bucket, Ideal for Loading Tall Trucks or Clearing Brush with Clamping Action of Bucket, 20 5x25 Tires, Good Paint, Good Tight Machine  
**Ready For Work!  
\$16,800**

**Great In-Field Truck Tires!**  
315-70R 22 5 Bandag Recaps with Waste Hauler Tread Mounted on Dayton Wheels (set of 2) (UM 3520)  
**Ask For Dean**

**LB10 Laser Transit & Tripod with Accessories**  
Used Very Little  
**Only \$1,580 (NE 6532)**

**BINKLEY & HURST BROS., INC.**

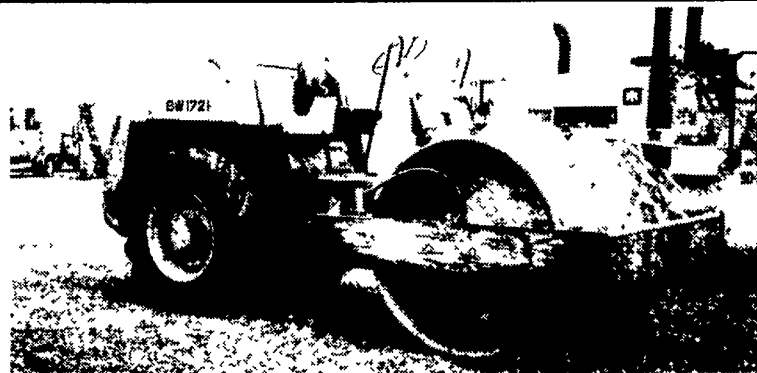
133 Rothsville Station Rd P O Box 0395, Lititz, PA 17543-0395 (717) 626-4705 1-800-414-4705  
Located 1/2 Mile North of Rothsville www.binkleyhurst.com Fax 717-626-0996

Visit us on the Internet at <http://www.casecorp.com>  
Case IH is a registered trademark of Case Corporation

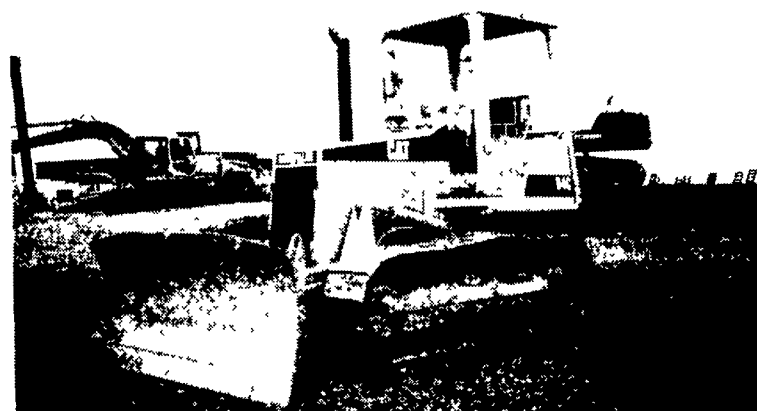


**WENGERS OF MYERSTOWN**

CONSTRUCTION EQUIPMENT & PARTS  
**800-552-5080** • Nights 717-272-9583  
Rt 501 South Myerstown, PA 17067  
HOURS: Mon-Fri • 7:30-5 00 Saturday • 7:30-Noon  
[www.wengers.com](http://www.wengers.com) kbaum@wengers.com



**1989 Bowmag 172 PD 66", Padsfoot, Drum Drive \$26,500**



**1989 Cat D4C 6 Way, R.O.P.S. \$29,500**

**In Stock at Binkley & Hurst Bros. Inc.  
Get More Production Out Of Your Skid Steer Loader**

LOGGING TIRE CRAWLERS

**TRAIL BLAZERS...  
turning up the heat!**



**In Stock For:  
Case 1845C Uniloader • Case 1840  
Gehl SL 5635 • Gehl SL 6635  
See Binkley & Hurst Bros. Today!**

**BINKLEY & HURST BROS. INC.**

133 Rothsville Station Rd. P.O. Box 0395 Lititz, PA 17543-0395 (717) 626-4705 1-800-414-4705

Fax 717-626-0996

[www.binkleyhurst.com](http://www.binkleyhurst.com)

