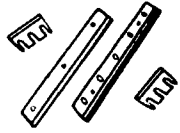


TEREX WHEEL LOADER
1990, M#K80C, 6 Yd Bucket, 11' Wide,
Very Good Condition
\$28,000

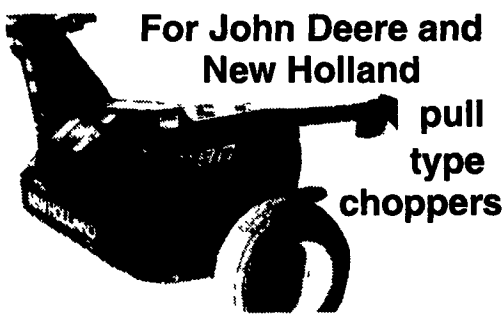
410-574-4700 www.hyeq.com

FORAGE KNIVES



JD, NH, IH, etc.
Tungston Carbide
Edge Knives from
Weaver cannot be
beat for Quality &
Price
Give your chopper
chopping fever with quality
knives from **WEAVER!**
Weaver Distributing
1-800-Weaver-D
Fredericksburg, PA

SILAGE PROCESSOR KITS



For John Deere and
New Holland
pull
type
choppers

- Pan removable for haylage
- 3 minutes or less
- No tools needed

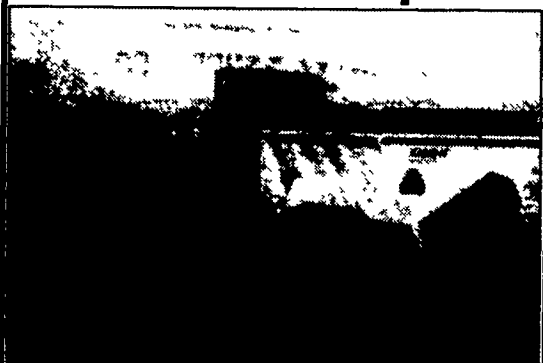
REPLACEMENT ROLLS

Call with your needs.
JD 5000 and 6000 Series in stock.
Cash price **\$886.35** each

HORNING MANUFACTURING LLC

1647 Union Grove Rd., East Earl, PA 17519
717-445-9317

Retire Your Current Spreader



KNIGHT PRO-TWIN SLINGER

Stop in and
see
the **KNIGHT**

**IN STOCK: Models 8014 (300 bu.),
8018 (400 bu.) and 8024 (500 bu.)
Slinger Spreaders**

ALSO Knight Model 1030 Box Spreaders and Knight
Models 3030 & 3537 Trailer Mixers In Stock.

ROVENDALE AG & BARN EQUIP.

WATSONTOWN, PA 17777
570-538-9564 OR 570-742-4226
1-800-1-180 Watsontown Exit
VAN DALE

SPECIAL SPECIAL SPECIAL SPECIAL SPECIAL SPECIAL

WISCONSIN HEAVY DUTY ENGINES
Serving The Community Since 1971

Wisc.-Robin, Kawasaki, Kohler, Briggs & Stratton, Tecumseh, Honda
Rockford and Twin Disc Clutch Parts & Accessories

PRESSURE WASHERS
Special Closeout Sale
While Supply Lasts
For Spring Cleanup

3200 PSI as low as \$998
3000 PSI as low as \$775
2400 PSI as low as \$575
2200 PSI as low as \$495
1500 PSI as low as \$235

WISCONSIN REPLACEMENT ENGINES
New & Rebuilt Short Blocks

Authorized Service Center

- Complete Rebuilding
- Large Parts Inventory

FISHER ENGINE SERVICE

2917 Old Philadelphia Pk. • Bird-In-Hand, PA 17505

SPECIAL SPECIAL SPECIAL SPECIAL SPECIAL SPECIAL

BUY ONE AND GET OUR VOLUME DISCOUNT

MF 200 ONE-SERIES TRACTORS

Over the last four decades, more farmers worldwide have purchased Massey Ferguson tractors than any other brand. This has created tremendous economies of scale and savings for you.

Some of the most popular MF tractors and best values are the 42-66 horsepower MF 200 ONE-Series tractors with their 1000-Series Perkins® Fastram™ engines, rugged durability, and basic features. There simply isn't a better tractor deal available today.

Stop in for a test-drive and more information.

MASSEY-FERGUSON
Massey Ferguson® is a worldwide brand of AGCO Corporation, Duluth, GA

SEE YOUR NEAREST DEALER FOR DETAILS

<p>M.M. WEAVER & SON N. Groffdale Rd. Leola, PA 17540 (717) 656-2321</p>	<p>LEBANON VALLEY IMPLEMENT CO. 700 E. Linden St. Richland, PA 17087 (717) 866-7518</p>	<p>MILLER EQUIPMENT CO. Stauffer Road Bechtelsville, PA 19505 (610) 845-2911</p>	<p>ECKROTH BROS. FARM EQUIPMENT RD #2, Box 24A New Ringgold, PA 17960 (570) 943-2131</p>
<p>MEYERS IMPLEMENTS, INC. 400 North Antrim Way Greencastle, PA 17225 (717) 597-2176</p>	<p>D.W. OGG EQUIPMENT CO. 5149 Cap Stine Rd. Frederick, MD 21701 (301) 473-4250</p>	<p>NORTHEAST DIST. & EQUIP. Rt 106 West Clifford, PA 18413 (570) 222-9090 (570) 222-9020</p>	<p>FRANK RYMON & SONS, INC. 399 Route 31 South Washington, NJ 07882 (908) 689-1464</p>
<p>SCHREFFLER EQUIPMENT Pitman, PA 17964 (570) 648-1120</p>	<p>C.J. WONSIDLER 1975 Trumbauersville Rd. Quakertown, PA 18951 (215) 536-1935</p>	<p>PEOPLE'S SALES & SERVICE Oakland Mills, PA 17076 (717) 463-2735</p>	<p>TEST DRIVE ONE TODAY!</p>

Leaman Tractor & Parts Inc.
329 Brenneman Rd., Willow Street, PA 17584 (Lancaster Co.)
717-464-2874 Fax 717-464-4130
Turn Left on Brenneman Rd. from 222 S at Refton
DEALER INQUIRIES WELCOMED

TORQUE AMPLIFIERS & CLUTCHES

CENTER HOUSING SPECIAL TILL APRIL 1, 2000
Labor Rate \$99.00
Gasket Package 50% OFF

- ★ 5 Year Warranty (Complete Unit)
- ★ Heavy Duty Sprag
- ★ Price \$695.00
- ★ 20 Years of Proven Results!
- ★ TA's Can Be Shipped UPS

The Strongest units available anywhere with a track record to prove it!

ENGINE PARTS

- ★ Engine Overhaul Kits for most brands, in-frame & complete out of frame kits Excellent prices from quality suppliers
- ★ Rebuilt fuel pumps - most brands, comes with 2 year warranty
- ★ Turbo Chargers (new & rebuilt) 1 & 2 year warranties
- ★ Next Day UPS Delivery On Most Of These Items

USED TRACTORS - SOLD WITH WARRANTY

- 1995 Magnum 7240, cab, air, MFD, 18x46 rear tires & duals, warranty till 4/1/00
- Case IH Magnum 7140, MFD, cab, air, 18x42 tires, fresh paint, 4700 hrs., w/duals & weights
- Case IH 5230, late 1994, cab, air, 2WD, w/1600 hrs., power shift, 3 valve hyd., very clean
- Case IH 385, diesel, ROPS w/1500 original hrs., excel cond
- (2) Case IH 5240, cab, air, power shift, MFD, 1995 w/3800 hrs., extended warranty till July, 1 with 2700 hrs & extended warranty
- IH 5288 MFD, cab, air, late 1984 model, 20x38 tires, 5600 hrs - **Coming In**
- IH 5488 MFD, cab, air, 1983 model, 5900 hrs., w/dual PTO & 20x38 tires & duals - **Coming In**
- IH 5088, Cab, Air, 2WD, 4700 Hrs., Good Cond., new 20x38 Duals Avail
- (2) IH 3488, cab, air, fresh paint, hydro trans rebuilt, 18x38 tires, like new, Excellent Cond (1) @ \$21,500
- IH 3088, cab, air, 2600 hrs., dual PTO & hydraulics, very good tractor
- IH 100, hydro, cab, hydro tested w/engine overhaul, fresh paint, 18x38 tires, 80% tread
- IH 1486, cab, air, 1981, 4500 hrs., 20x38 tires, very nice cond., solid mechanically
- IH 1086, cab, air, good rubber, nice cond.
- IH 1086, 1981, cab, air, very clean, excel cond, 18x38 tires 80% tread
- Case IH 5250, cab, air, power shift, MFD, 1995, w/4001 hrs., extended warranty till July
- (2) Case IH 5140, cab, air, MFWD, power shift, 5000 hrs & 8000 hrs., 1 w/creeper
- Case 2590, cab, power shift, 20x38 90% tread & duals, good cond
- IH 1486, cab, air, 20x38, good T/A, 2 valves 2 PTO shafts, 2700 hrs, showing
- IH 1206, WFE, 3pt, 2 PTO's & 5 yr T/A
- IH 1066, red cab, 1975 model, 3500 hrs., 18x38, dual PTO & hydraulics, field ready
- Farmall 656 diesel, hydro w/2 post ROPS, hydro tested, diesel runs good, 16 9x38 tires
- Farmall 560 gas, w/rebuilt T/A, 15x38 rear tires, standard draw bar, runs good
- JD 1010, crawler loader, gas, good cond
- JD 2940, row crop w/2 post ROPS, 4700 Hrs., nice, 16x38 tires & Hi-Lo
- JD 4620, power shift, w/cab, will have rebuilt trans
- IH 1086, ROPS, will have fresh T/A & has recent engine, complete SRC engine
- MF 2805 cab, air, 240hp, w/PS, trans, 1900 hrs., tractor good in every way "cheap hp"
- Cockshutt 30, WF, 3pt, nice sheet metal
- IH 660, factory propane w/hand clutch & T/A
- Engines (used)
 - D282 fits 560 thru 706
 - D310 German fits 706, 756
 - JD 7 6L, same as 466-T complete fresh overhaul
- 1998 JD 9510 combine, 800 hrs., fully equipped, including green star

APRIL SPECIALS

- JD 4450 ROPS MFWD, quad range trans, 18x38 radial tires, fit weights, good cond., Price Low \$20's
- IH 544 diesel utility hydro tractors new tires, new yellow paint, no 3 pt \$3,400 as Equipped
- White 4-270 art tractor, 20x38 & duals w/3pt & PTO CALL
- 1998 JD 7610 MFD, power shift cab air, excel cond 4600 hrs w/warranty remaining \$46,000 Not in our yard (yet)
- JD 4760, cab, air MFD power shift, w/7500 hrs & equipped w/duals 1 Sold - 1 Remaining
- IH 1486, cab air excel mechanics has cab rust \$9,500
- Case 1270 cab, power shift, runs good & operates \$4,000
- (2) Wide Front Ends, 1 for Farmall M & Farmall 450 CALL

Call Us For Your Used Parts Needs
SPECIALIZING IN IH BUT HAVE OTHERS