

1 FARM EQUIPMENT

D & R EQUIPMENT INC.

Rt. 579, Ringoes, New Jersey
(908) 782-5082

USED TRACTORS

JD 7700, MFWD, 1,100 hrs
JD 4850 MFWD, cab & air, sharp
JD 4840, cab & air
JD 4640, PS, cab, air, duals
JD 4440, cab & air, 1 owner, sharp
JD 4240, cab & air, quad
JD 4240, cab & air, power shift
JD 4240, 4 post
JD 4040 cab & air, sharp
JD 4020, diesel **SOLD** 0 hrs, excellent
JD 2840
JD 2440, hi-trn
JD 4450 cab & air, excellent
JD 4250 MFWD, cab & air, power shift
JD 4250, cab & air, quad range
JD 4050, cab & air, power shift
JD 2950, cab & air
JD 2955, cab & air, MFWD
JD 2555
JD 2355N
JD 2150
JD 4230 quad range, fender
JD 4320 w/cab
JD 4320 fender
JD 4020, side console, WF
IH 1586, 4 post
IH 1466
IH 1066
IH 986, cab, air
IH 786, ROPS
IH 484, diesel, excellent

LOADER TRACTORS

IH 495, MFWD w/ldr
Ford 545, 4WD, **SOLD**
JD 4250, MFWD w/265 ldr
JD 2555, MFWD w/245 ldr
JD 2440 w/146 ldr

COLLECTOR TRACTORS

1951 JDA, 42" rubber
JD 60
JD 70, original
JD 620
JD 630, original
1940 Farmall M w/factory WF
Oliver 770, gas, WF
Oliver 77, gas
MM Z
Massey Harris 44

INDUSTRIAL

Gehl 4600 skid steer, very good

USED PLOWS

IH Consortill 10"
JD 2500 5 btm 18" spring reset
AC 5 btm
JD 5 btm

USED COMBINES

444 JD corn head
JD 643 corn head
JD 443 corn head
JD 343 corn head
JD 7720 4WD, 2,300 hrs, excellent
JD 4400, diesel
JD 3300 w/2 row head
JD 3300 diesel, 1978

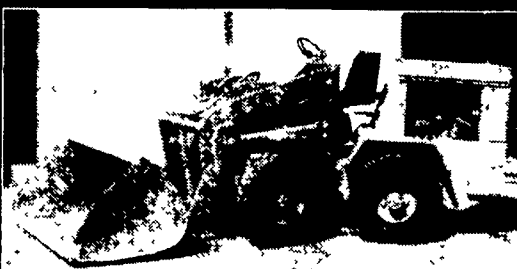
HAY EQUIPMENT

JD 338 baler w/4 **SOLD** NEW
JD 346 wire baler
NH 311 baler, sharp
NH 316 wire baler
NH 630 round baler
NH 848 round **SOLD** cellent
NH 474 haybine, 7', sharp
NH 256 rake, like new

MISCELLANEOUS

Brillion 15' packer mulcher, Danish teeth
Taylorway 25' disc
18' IH field cultivator, hyd fold
JD 950 roller harrow
JD 7000 4R planter, liquid
JD 7200 6R Planter, Dry, Excellent
NH 352 grinder mixer
Gehl 120 grinder mixer
Gehl 95 grinder mixer, very good
IH 510 Grain Drill w/Press Whls
Bush Hog no-till drill
JD 750 15' no-till drill
Bush Hog 2845 Ldr, fits JD 4020, like new
JD 158 loader **SOLD**
JD 58 loader

'85 GMC C-7000 w/26' Jerr-Dann Body,
Air Brakes, Air Tag Axle



WALDON 6000
Ford Ind. 4 Cyl., Hydro Loader - \$3,100

Contact:
570-726-4525

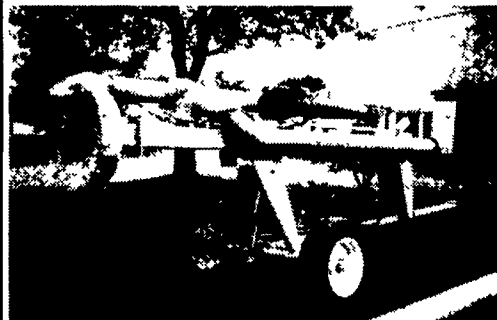


New Holland 781 Skid Steer

Runs Excellent.....**\$8,800**
Gehl 6625, 1,900 Hrs.....**\$10,000**
91 Gehl 4615.....**\$5,000**
95 Case 1845C, Excellent.....**\$12,000**
410-429-1927

VORTEX
Liquid Manure Pumps

Triple Seal & Timken Roller Bearing Assembly



- Stationary Mount
- 2 Point Hookup Model
- Trailer Model
- Variable Depth Model

You'll appreciate the performance...
and the price!

K.W. MARTIN
Lititz, PA
717-738-2584

CHARLES S. SNYDER, INC.

RR3, BOX 109
1 MILE EAST OF RT. 309 ON RT. 443
TAMAQUA, PA 18252 PHONE: 570-386-5945
MON. THRU FRI. 8:00 A.M. TO 5:00 P.M.
FAX 570-386-4080
SAT. 8:00 AM TO 12:00



SHIP PARTS UPS DAILY

WEB SITE- www.cssnyder.com • EMAIL cssnyder@ptd.net

TRACTORS

Tag#	Make	Model	Year	Hours	PTO HP	Description
10329	Ford	6600	1976	4203	70	W/Cab 2 Remotes Weights Front & Back
10450	Ford	3400	1965	N/A	35	Utility Gas Tractor w/Loader Ind Type
10706	JD	2840	1977	5304	80	2wd Diesel Tractor 6 Cylinder
10760	Ford	5000	1970	4655	53	Gas Tra w/Wide Front End w/BH Loader
10802	Ford	5610	1990	1465	66	Tractor w/Loader 4WD Shift on Column
10851	Case	970	1978	4040	85	Diesel Power Shift
10855	NH	8670	1996	535	145	4WD Cab, Super Steer
10858	Ford	5000	1967	3549	70	Wide Front
10865	AC	185	19 SOLD	2314	65	Diesel w/Loader
10870	Kubota	L345	1992	2333	30	w/Loader
10876	Ford	7400	1993	SOLD	83	2WD Diesel, Dual Power
10881	Ford	2000	1973	2185	31	Diesel Tractor Turf Tires
10886	Ford	5610	1985	7240	66	2 WD Cab
10897	AC	185	N/A	3033	74	Diesel 2WD Cab, Wide Front 2 Remotes

INDUSTRIAL TRACTORS

Tag#	Make	Model	Year	Hours	Description
10821	Case	W14H	1973	3142	Wheel Loader w/Clam Bucket
10794	JD	310	1974	6719	TLB 4-Post 2 Lever
10762	Ford	801SOS	1959	2394	TLB Gas
10726	NH	655E	1998	456	4WD Cab Ext Hoe 2 Lever
10668	Case	580D	1980	4032	TLB Cab 4WD Ext Hoe
10623	Ford	655D	1993	2308	4WD Cab Ext Hoe 2 Lever
10580	Ford	655D	1994	2152	4WD Cab 15' Ext Hoe 2 Lever
10205	Ford	4000	1965	SOLD	Select O Speed Diesel

SKID LOADERS

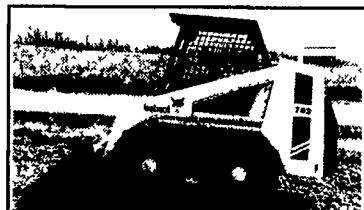
Tag#	Make	Model	Year	Hours	Description
10902	NH	L455	1988	3884	Kubota Diesel
10859	NH	LX665	1997	2612	w/Cab Kit & Heater
10850	NH	L425	1979	3150	Gas Rebuilt Motor
10846	Clark Forklift	Y40	N/A	2116	Propane 48" Forks
10844	NH	LX665	1996	475	HD 2000 Tires
10800	Thomas	L03	1989	420	Kubota Engine 60" Bucket & Pallet Forks
10783	NH	L555	1987	2921	w/Bucket
10616	Ford	CL25	1995	2581	Diesel w/Ford Engine
10554	Commander	C8000	N/A	1114	Rubber Track Crawler

HAYBINES

Tag#	Make	Model	Description
10893	NH	1411	Discbine 540 PTO
10694	NH	2450	Self Propelled Haybine 14 Ft Head
10621	NH	2450	Self Propelled Haybine 14 Ft Head
10813	NH	489	Standard Guard Roll Good
10741	NH	499	Stub Guard Hydro Swing
10476	NH	499	Stub Guard Pivot Tongue
10447	JD	1600	Stub Guard Hydro Swing 12'
10424	NH	469	Standard Guard Bad Roll
10398	NH	489	Standard Guard Good Roll
10841	NH	411	540 PTO
10443	NH	411	1000 PTO

TANEYTOWN FARM EQUIPMENT

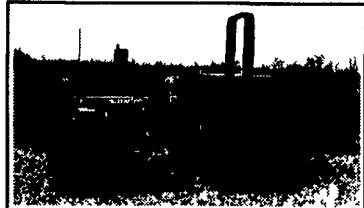
Route 194 and Brown Road 410-751-1500
Bush Hog® King Kutter Toll Free 877/751-1500



Bobcat 743 Skid Loader
\$7,495



Case IH 885 4x4, 72 HP
\$10,900



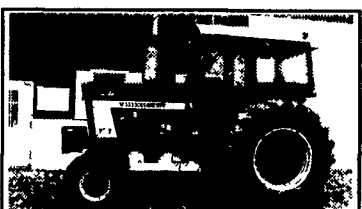
Int 784 4x4, 65 HP
\$8,900



JD 2950 85 HP 4x4 w/Loader
\$18,500 will separate



Kubota M5030, 50 HP, Exc. Cond.
\$8,995



Int. 1466 w/Cab, 145 HP
\$9,495

TRACTORS

AC D17 w/Snap Coupler Hitch	\$2,995	Int Hydro 84	\$6,495
Ford 1720 4x4 w/Loader & Cab	\$11,900	JD 400 TLB, Runs Excellent	\$5,750
Ford 4000 Live PTO P/S	\$4,995	JD 401B, 60 HP Utility	\$6,495
Ford 8N Straight Clean Tractor	\$2,795	Kubota L175 w/Woods Finish	\$3,295
Int 1486 w/Cab	\$6,495	MH Pony, Very Nice Cond.	\$1,795
Int 706 w/Cab	\$4,995	Ford 3000 Live PTO, P/S	\$4,995

Bush Hog Loaders
20% OFF

Shaver Post Drivers
HD10 - \$2,150 • HD8 - \$
We deliver anywhere