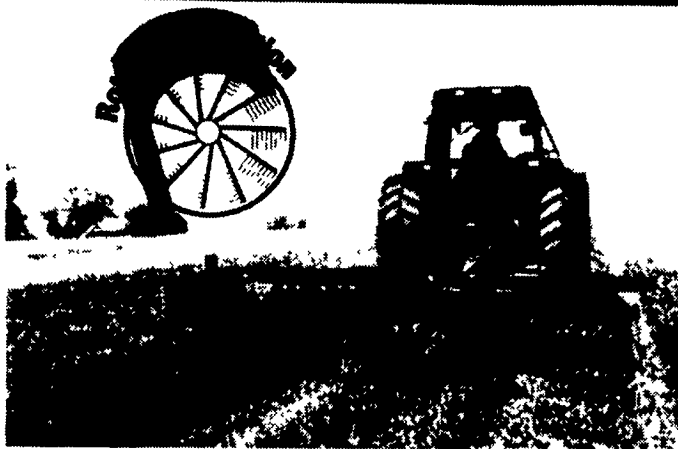


MILLER PRO



Less leaf loss with gentle sweeping action. Crop is handled only once. Cam action tine arms lift the crop and deposit it in the swath, forming faster-drying, higher, fluffier windrows. No roping rolling or twisting.

Rake in more feed value!

MESSICK FARM EQUIPMENT INC.

Rheems Exit - Rt. 283, Elizabethtown, PA 717-367-1319, 717-653-8867

INVENTORY REDUCTION SAVINGS

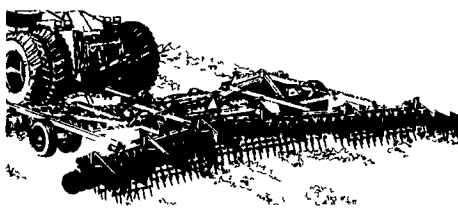
0%

12 Months

4.5% 24 Months
5.5% 36 Months
6.5% 48 Months
7.5% 60 Months



GET YOUR BEST DEAL NOW!



CASE IH 3950 DISK HARROW - IT LEVELS, LEVELS, LEVELS!

CASE III MX 220 185 H.P. In Stock



LEASE ME!

EXTENDED SPRING HOURS ARE BACK!

ELIZABETHTOWN STORE ONLY Starting April 17th thru June 30 Monday thru Friday Parts, Sales & Service will be open from 7:00 am until 6:00 pm

MESSICK FARM EQUIPMENT INC.

Rheems Exit - Rt. 283, Elizabethtown, PA 717-367-1319, 717-653-8867

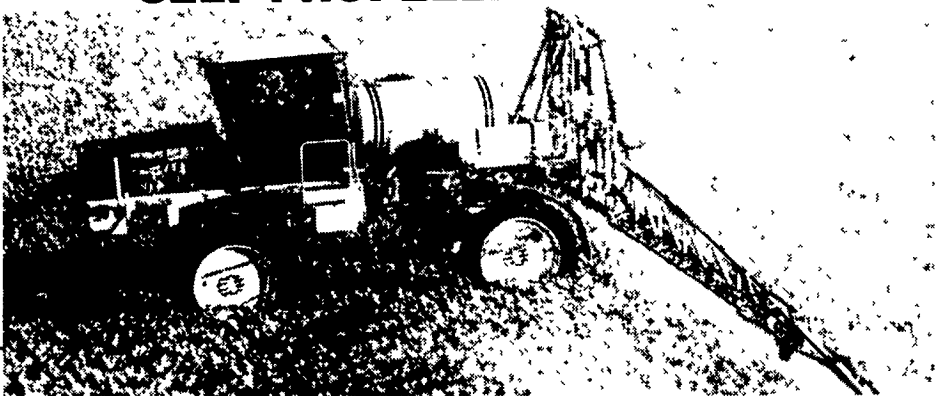
Visit us on the Internet at <http://www.casecorp.com>
Case IH is a registered trademark of Case Corporation



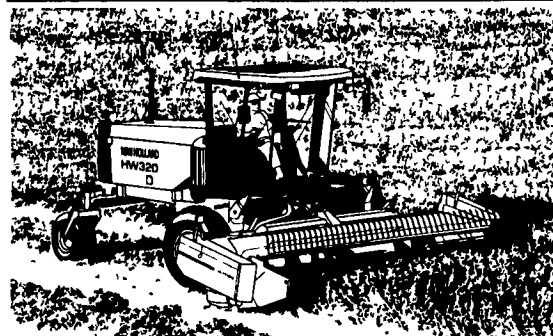
THE ALL NEW IN STOCK

NEW HOLLAND SF 550

SELF-PROPELLED FIELD SPRAYER



VERSATILITY AND ACCURACY IN ONE SPRAYER



NEW HOLLAND HW300 w/SP HAYBINE
14' Head, 195 Hrs

HW340 SP DISCBINE
15' Head, Less 200 Hrs.

Lease Return **SAVE \$\$\$**

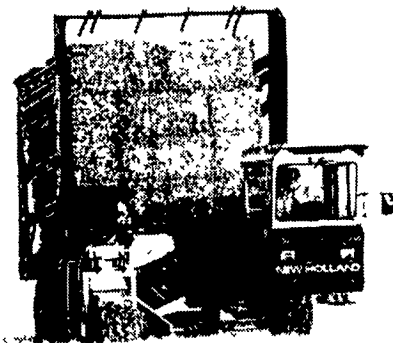
LOOKING FOR A SPREADER?



We Have One To Fit Your Needs.

SKID LOADERS

The New "LS" Are Here!



NEW SP1089 BALE WAGON
Pickup and Stack Bales - FAST
In Stock



MESSICK'S



SERVING TWO LOCATIONS

Rheems Exit - Route 283
Elizabethtown, PA 17022
717-367-1319 717-653-8867

RD 1, Box 225A, Abbottstown, PA 17301
West of York, PA On Route 30
717-259-6617

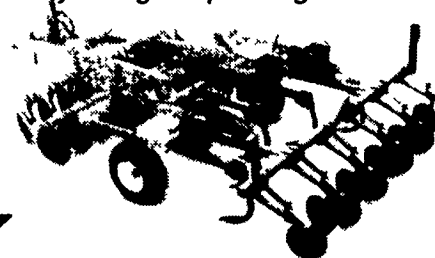
CASE III YIELD-TILL® SYSTEM

DMI Soil Management For Higher Yields

Get More Bushels Out of Every Field By Using Deep Till Tiger Points.



Ecolo-Tiger 527B with hydraulic disc level'r



DMI Tiger Points have wings that are swept downward, rearward and outward. This revolutionary design creates a lifting and twisting action that shatters compaction.



Helping Plants Thrive®

MESSICK FARM EQUIPMENT INC.

Rheems Exit - Rt. 283, Elizabethtown, PA 717-367-1319, 717-653-8867

Visit us on the Internet at <http://www.casecorp.com>
Case IH is a registered trademark of Case Corporation.



Kubota

TRACTORS FOR EVERY NEED
12 HP to 91 HP

- Farmers
- Landscapers
- Home Owners
- Contractors

We Have A Kubota For You



MESSICK FARM EQUIPMENT INC.

Rheems Exit - Rt. 283, Elizabethtown, PA 717-367-1319, 717-653-8867

MESSICK FARM EQUIPMENT INC.

Rheems Exit - Rt. 283, Elizabethtown, PA 717-367-1319, 717-653-8867

Visit us on the Internet at <http://www.casecorp.com>
Case IH is a registered trademark of Case Corporation



- TRACTORS**
- Ford 4000 Tractor (A)
 - Ford 2000 Tractor (A)
 - Case IH 2098 Cab, Power Shift
 - NH 8970 w/Duals & Super Steer
 - Case IH 7220 MFD, Immaculate
 - MF 750 Combine, Clean
 - Case IH 3220 Tractor w/2250 Loader
 - NH 2120 4WD, w/Loader
 - Ford 6600 (A)
 - Case IH 5140 4x4 w/Cab
 - Ford 3910 4WD w/Loader (A)
 - NH 2760 - Bi-Directional Tractor w/Loader & 12' Haybine Head
 - IH 5288 w/Duals, 2WD, Cab
 - IH 3088 Tractor
 - MF 283, 67 HP, Excellent
 - Deutz DX 160 HP, Cab
 - IH 1086 Tractor w/ROPs, Ex.1
 - Ford TW35, 4WD, 175 HP, Nice!
 - NH 5030 Tractor, Excellent, 500 Hours, 4x4, 2 Remotes (A)
- COMPACT TRACTORS**
- Ford 1220 w/60" Deck
 - (2) JD 855 w/72" Deck
 - (3) Ford 2120 4x4 w/Loader (A)
 - (1) Farmall M (A)
 - NH TC33 Tractor w/Loader (A)
 - Ford 2120 w/Loader
 - Ford 1920 w/Loader (A)
 - Kubota B6100 w/48" Deck
 - Kubota B6100, 48" Deck & Snow Blower
 - Kubota L345 w/Loader
 - Ford 1700, 2WD (A)
 - NH 2120 4WD w/Loader
- SKID LOADERS**
- Case IH 1840 Skid Loader (A)
 - Case 1835B Skid Loader
 - Bradco 611 Backhoe
 - JD 8875 Skid Loader w/Bucket
 - LX 665 Skid Loader, 186 Hrs.
 - NH LX985 Skid Loader w/Cabs, 500/800 Hrs.
 - Case 1838 (Nice) (A)
 - NH 785 Skid Loader
 - JD 240 Skid Loader (A)
 - Gehl 4625 Skid Loader (A)
 - NH 781 Skid Loader
 - NH 555 Skid Loader
 - Scat Trak 5062 Skid Loader
 - NH L775
 - NH 885 Skid Loader
- SPREADERS**
- NH 145 Spreader w/Top Beater
 - NH 308 Spreader (Nice) (A)
 - NH 308 Spreader

- NH 329 Spreader (A)
 - JD 54 Spreader
 - NH 306 Baler, Side Discharge (A)
 - JD 350 Spreader (A)
- PLANTING & TILLAGE**
- Case IH 415 Roller Mulcher, 13'6"
 - IH 415 Roller Mulcher 13'6"
 - IH 140 3 Bottom Roll Over Plow
 - JD 456 Round Baler (A) Excellent!
 - IH 710 Auto Reset Plow, 6 Bottom
 - Ford 3 Bottom Auto Reset Plow
 - JD 12' Transport Disc
 - JD F146 5 Bottom Plow
 - M&W 21' Hyd Fold, Rotary Hoe
 - Oliver 348 3 Bottom Auto Reset Plow
 - Oliver 548 5 Bottom Auto Reset Plow
 - NH OD 200 Disc Harrow 12' Plow Disc - Ex. Cond.
 - Brillion BRH 630 6-Row Cultivator
- USED LAWN & GARDEN**
- Cub Cadet 1863, 48" Deck
 - Woods 1850 Mow 'N Machine - "Mech Special"
 - MF 2920H, w/60" Deck - Like New
 - Cub Cadet 1541, 44" Deck
 - Woods 6160 48" Deck & Grass Catcher
 - (2) Kubota T1600 Lawn Tractor, Diesel, 44" Deck
 - Hustler 340 w/60" Deck & Vac
 - JD 14 HP Commercial Mower w/Sulkey
 - Steiner 220 Diesel
 - Cub Cadet 682, 44" Mower
 - Kubota GF1800 4WD, 54" Deck & Catcher
- HAY & FORAGE**
- NH 163 Tedder
 - Gehl 970 Forage Wagon
 - NH 452 Disc Mower
 - NH 315 Baler w/75 Kicker (A)
 - NH 276 Baler w/Thrower (A)
 - Niemeyer Rake (A)
 - Gehl CB 1275, Tandem Axle, Crop Processor, 3R Corn Head, Like New!
 - JD 6910 4x4 Harvester w/Processor, 6R Corn, Hyd. Fold & Pick-up Attachments
 - NH HW340 SP Discbine w/15' Head, 170 Hrs.
 - Zimmerman 7' Hay Tedder
 - Case IH 86 Hyd. Drive Hay Rake
 - NH 590 Big Sq. Baler

- NH 595 Big Sq. Baler
 - NH 30 Blower
 - NH 575 Baler w/Thrower
 - NH 644 Round Baler, Silage Special w/Slicer, Net Wrap
 - Hesston 7655 SP Harvester w/Side Dump, 3 Row Corn Head; Pick-Up Attachment
 - NH 1034 Baler Wagon (A)
 - NH 451 Sicklebar Mower (A)
 - 4500 Kemper Header, Hyd-Fold, 6-Row, Ex. Cond.
 - JD 700 Utilized Hay Rake
 - NH 1003 Bale Wagon (A)
 - NH 256 Rake
 - NH 258 Rake
 - IH 600 Blower
 - Miller Pro 18' Forage Box
 - Gehl 1580 Blower
 - Hesston F16, Tandem Axle, Roof, 3 Beaters
 - Fargo HI Lift Side Dump Wagon
 - NH 1037 Auto Bale Wagon
 - IH 27 Sq. Baler
 - NH 492 Haybine
 - NH 254 Rake Tedder (A)
 - NH 282 Baler w/Thrower (A)
 - NH 411 Discbine
 - NH 2450 SP Haybine w/14' Head (A)
 - Hay Wagon
 - NH 853 Round Baler Netwrap
 - NH 853 Round Baler
 - NH 40 Blower, Excellent
- CONSTRUCTION & INDUSTRIAL EQUIP.**
- Case 580 SE Tractor/Loader/Backhoe
 - Ford 3400 Ind. Tractor w/Loader
- MISCELLANEOUS**
- Woods C114 Rotary
 - 220 Spray Coupe 60" Boom, 600 Hrs.
 - W8061 Westfield Transport Auger
 - Shaver HD8 Post Driver
 - 1000G John Blue Sprayer, Loaded
 - Zimmerman 32' Elevator
 - Vicon 750 Gal. Hyd-Fold Boom Meyer's 7 1/2' Snow Plow
 - JD Gator (A)
 - Brady Fall Shredder
 - Steiner RS 548 54" Rotary Broom
 - 1979 White Western Star 24' Dumpbed
 - JD 27 Fall Shredder
 - 41' Miller Pro St. Wall & Lagoon Manure Pump
 - Hanes Potato Grader w/36' Loader Conveyor