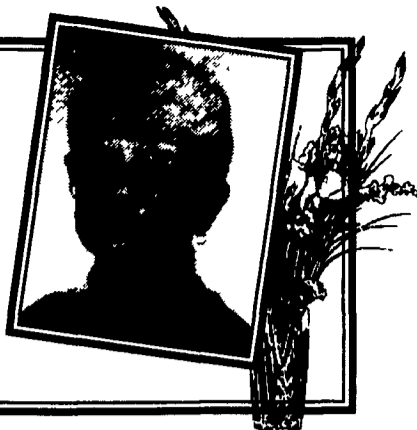


**Family Living
Focus**
Bucks Co.
Extension Agent
Kay Hastings



insect and wasp sprays, repellents and baits; and, flea and tick shampoos and dips for pets. Other household pesticides include swimming pool chemicals and weed killers.

EPA has important regulatory authority over pesticides in the United States under the pesticide law (the Federal Insecticide, Fungicide, and Rodenticide Act). Since 1981, the law has required most residential-use pesticides with a signal word of "danger" or "warning" to be in child-resistant packaging. These are the pesticides which are most toxic to children. Child-resistant packaging is designed to prevent most children under the age of five from gaining access to the pesticide, or at least delay their access. However, individuals must also take precautions to protect children from accidental pesticide poisoning or exposures.

Recommendations for Preventing Accidental Poisoning:

- Always store pesticides

away from children's reach, in a locked cabinet or garden shed. Child-proof safety latches may also be installed on cabinets and can be purchased at your local hardware store;

- Read the label first and follow the directions to the letter, including all precautions and restrictions;

- Before applying pesticides (indoors or outdoors), remove children and their toys as well as pets from the area and keep them away until the pesticide has dried or as long as recommended by the label;

- If your use of a pesticide is interrupted (perhaps by a phone call), properly reclose the package and be sure to leave the container out of the reach of children while you are gone;

- Never transfer pesticides to other containers that children may associate with food or drink;

- Never place rodent or insect baits where small children can get to them;

- Use child-resistant packaging properly by closing the container tightly after use;

- Alert others to the potential hazard of pesticides, especially care givers and grandparents;

- Teach children that "pesticides are poisons" - something they should not touch;

- Keep the telephone number of your area Poison Control Center near your telephone. Adapted from EPA bulletin - 735-F-93-050

Glass Spots

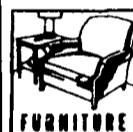
Q. I have spots on my glasses after they are removed from the dishwasher. They are clean, but look dirty because of these spots. What can I do?

A. Spotting happens when water evaporates from a glass, leaving the minerals behind. There are more minerals in hard water, and this condition occurs in areas that have hard water.

Make sure to use the correct amount of dishwasher detergent. Using a rinse agent will also help. Rinse agents cause water to sheet off the dishes and speed drying, thus helping to prevent spots from forming.



Where's your mustache?™



CLOSED SUNDAYS, NEW YEAR, EASTER MONDAY, ASCENSION DAY, WHIT MONDAY, OCT. 11, THANKSGIVING, CHRISTMAS & DECEMBER 26TH

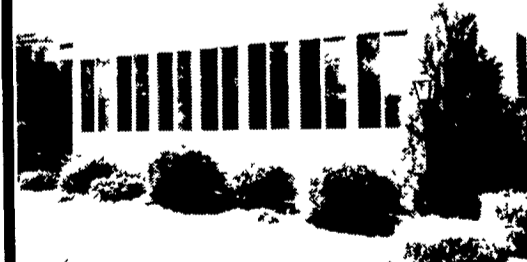
FISHER'S FURNITURE, INC.

NEW AND USED FURNITURE
USED COAL & WOOD HEATERS
COUNTRY FURNITURE & ANTIQUES

BUS. HRS. MON.-THURS. 8-5
FR., 8-8, SAT. 8-12

BOX 57
1129 GEORGETOWN RD.
BART, PA 17503

VINYL Enclosure
Vinyl Insulated Patio & Sunroom



- Easy to maintain - never paint again
- Will not fade, crack, peel or dent
- Patented construction can withstand 115 mph winds
- Affordable
- 15° cooler in summer; 15° warmer in winter than aluminum.

Is this what you're looking for?
Custom made for your home.
Come see our room on display.



265 E. Meadow Valley Rd
Lititz PA 17543
717-733-7160 • 717-627-6886
1-800-247-2107



Financing Available



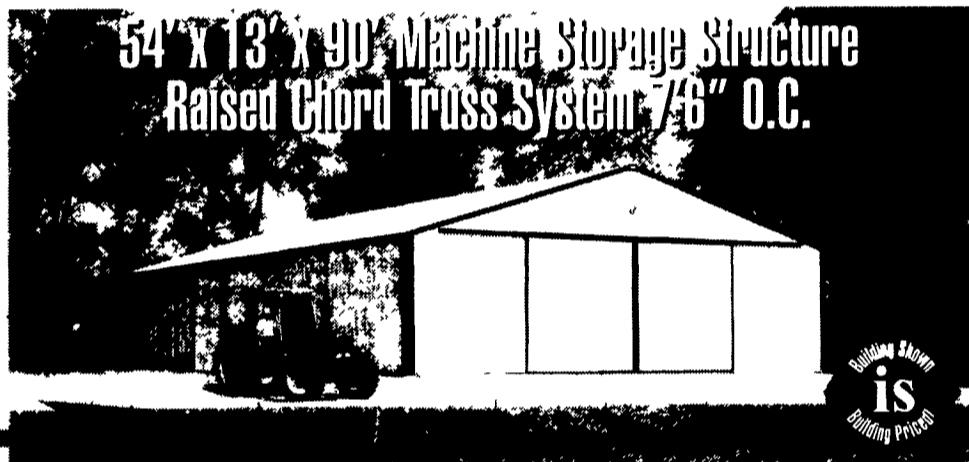
Looks Better. Lasts Longer!

LOOKS BETTER



LASTS LONGER

\$28,995



- 1-27' x 14'6" AlumaSteel® Sliding Double End Door
- 1-22' 6" x 13' AlumaSteel® Sliding Double Side Door
- 1-3' x 6'8" 9100 KYNAR 500® Insulated Walkdoor (no glass)
- White Polyester Roof and Sidewall Paint System
- Premium KYNAR 500® Trim Paint System
- Morton Gutters and Downspouts
- Free Morton Weather Vane
- Full Morton Warranty
- Items not called out are not included

54' x 13' x 90' Deluxe Machine Storage Facility
Raised Chord Truss System 7'8" O.C.

LOOKS BETTER



LASTS LONGER



\$36,395

- 1-24' x 14'6" AlumaSteel® Sliding Double End Door
- 1-22' 6" x 13' AlumaSteel® Sliding Double Side Door
- 1-3' x 6'8" 9100 9-Lite KYNAR 500® Insulated Walkdoor
- 2-4' x 3' 9-Lite Insulated Sliding Windows with Screens and Shutters
- 4 Skylights
- 2-3'6" x 3'6" Cupolas without fan topped with Morton Weather Vane
- 1' Vented Sidewall Overhangs
- 2' Gable Overhangs
- Continuous Ridge Ventilation System
- Exterior Hi-Rib Steel Wainscot with Interior Protective Liner
- Premium KYNAR 500® Roof Paint System
- Premium KYNAR 500® Sidewall Paint System
- Morton Gutters and Downspouts
- Full Morton Warranty

800-447-7436
ask for ext.



P. O. Box 399, Morton, IL 61550
www.mortonbuildings.com

©2000 Morton Buildings, Inc.
RVV 007848 / ACB C034342
Version ED

All warranties include material and labor and are not prorated. Special pricing includes taxes, materials, delivery, unloading and labor to erect within 40 miles of a Morton Buildings, Inc. construction center. Customer must provide a site prepared to Morton Buildings, Inc. Site Specifications Form 153a (i.e. a level site without underground obstruction) and participate in Morton's progressive payment plan. Prices may vary because of local building codes. Due to local price variations, pricing does not include concrete. Prices may vary for every 1,000 feet over 6,000 feet of elevation. Offer expires April 30, 2000.

KYNAR 500® Trademark of Elf Atochem NA • AlumaSteel® Trademark of Morton Buildings, Inc.

Gettysburg, PA 717-624-3331
Mt. Pleasant, PA 717-542-7930

Meadville, PA 814-336-5083
Phillipsburg, NJ 908-454-7900

Centre Hall, PA 814-364-9500