

CHAPMAN

FORD LINCOLN MERCURY NISSAN

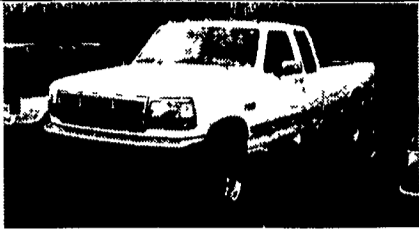
LEBANON

717-272-7671

Parts Dept. Open Daily 8-5
Sat. 8-12 717-273-8168



20th & Cumberland Sts.
Rt. 422 West
9-9 Daily, 9-5 Sat.



97 FORD F250 SUPER CAB 4x4

460 V8, Heavy Duty, XLT, White, #P4347



93 FORD F150 FLAIRSIDE

AT, PW, PL, Tilt, Cruise, #4450A



2000 FORD RANGER SUPERCAB XLT

4x4, Auto, CD Player, 5,800 Miles, #4426A
SAVE THOUSANDS OVER NEW!



98 FORD RANGER SUPER CAB

V6, 5 Spd., XLT, Cassette, Maroon, #P4289A



98 FORD RANGER

Auto, A/C, Cass., Perfect Work Truck, 33,000 Miles, #4295A

FREE TOOL BOX WITH PURCHASE



98 FORD F150 XLT 4X4

PW, PL, Tilt, Cruise, Super Truck, #4463A



90 FORD F150 SUPER CAB

4x4, 5.8 V8, AT, Cap, Dual Tanks, Low In Miles #6005A



97 FORD F150 SUPER CAB

4x4, XLT, PW, PL, Cassette, AT, #4473A



98 FORD RANGER SUPERCAB 4X4

XLT, Very Nice Truck
Priced Right! #PL4342

Credit Problems? Call 1-888 CARS 4 You

TRUCKS - UTILITY VEHICLES - TRUCKS

Appalachian Manufacturing, Inc.
330-222-2468

20,000# G.V.W.
Oil Bath Axle

10K Dual Tandem Trailers - Spring Assist Ramps
Pintle Pull, 18x5, Dovetail \$4,750
Gooseneck, 20x5 \$5,000

24' Gooseneck, 4' dovetail, 1-12,000# G.V.W., 6,000# axles w/easy lube, electric brakes, 7.50-16 tires, breakaway kit, ramps w/pressure treated deck, standard 12,000 GVW \$2,995
..... 14,000 GVW \$3,195

16' Car Hauler, diamond plate deck with W/D rings, self storing ramps, 7,000# G.V.W., elect. brakes, both axles 82" between wheel wells, breakaway kit incl
16' Car Trailer \$1,495 18' Car Trailer \$1,645

We Special Build For Any Need!

21' Low Profile, 10,000#, axel w/easy lube, elect brakes, pressure treated deck, 10,000# G.V.W., gooseneck \$3,100
Bumper pull \$2,950

Autocar Liquid Manure Truck
400hp Detroit engine, 3500 gal. vacuum or top fill tank, Battioni vacuum pump & Deutz 35hp pony engine, very good condition.
\$19,500 OBO
301/582-1032

Business Hours:
Mon.-Fri. 9 to 9;
Sat. 9-4

2300 W. CUMBERLAND ST.
(Rt. 422)
LEBANON, PA 17042
(Across From Lebanon Valley Mall)

CAR VILLAGE

HEAVY DUTY TRUCKS

PHONE 717-274-2000 Toll Free 1-800-650-1420

MECHANIC'S SPECIAL
87 FORD F250 XL SUPER CAB 4X4
Needs Engine, Heavy Duty 3/4 Ton, AT, A/C, Lock Out Hubs - \$4,500

14 FT. CUBE VAN 96 FORD E-450
Big 14,050 GVW Powerstroke Turbo Diesel, AT, Only 33,000 Miles, Real Clean Tk. & Ready To Go To Work

MECHANICS BODY 4 WHEEL DRIVE
96 FORD F250 XL
351 I.I. V8, 5 Spd. Trans, Very Nice Reading Body, 66,000 Miles \$16,900

DIESEL CARGO VAN - 97 FORD E350
Ready to Work For You. Powerstroke Diesel, AT, A/C, Excellent Condition, Inside & Out, Heavy 9400 GVW

BLACK BEAUTY
97 DODGE 2500 4 WHEEL DRIVE CLUB CAB
A Beauty, Nice To Look At, Super Clean Inside & Out, Cummins Turbo Diesel, AT, A/C, Tow Pkg., Chrome Wheels, You Will Like It.

4x4 RACK BODY DUMP 97 FORD F350
Great Tk., Only 41,000 Miles, Powerstroke Turbo Diesel, 5 Sp., A/C, Frame Mount Tool Box, Tow Pkg, 12 Ft. Body, Put It To Work

5 SP. DIESEL, 93 FORD F350 CREW CAB DUALY
Nice Tk, 67,000 Original Miles, 7.3 Diesel, Loaded XLT, Chrome Simulators, Heavy Duty Tow Pkg.

TOW MACHINE 96 DODGE 3500 CLUB CAB
DUALY 4 Wheel Drive, This One Will Pull The Big Load, Cummins Turbo Diesel, AT, A/C, All Power Equipment, Heavy Duty Dana Frt. & Rear Axles, Tow Pkg.

GREAT PRICE! GREAT TRUCK!
99 FORD F350 4 DOOR CREW CAB
4 Wheel Drive, Powerstroke Diesel, 6 Sp. Trans., Loaded, XLT, CD Player, Trailer Tow Mirrors, Aluminum Wheels - Only \$29,900

5 SP POWERSTROKE 4 WHEEL DRIVE
96 FORD F250
Heavy Duty Great Tow Machine, A/C, Very Clean & Runs Strong

5 SP. 1 TON, 94 FORD F350 4 WHEEL DRIVE
Solid Front Axle, Powerstroke Turbo Diesel, 5 Sp., A/C, Dual Tank, Tow Pkg, Lock Out Hubs, Big Swing Out Tow Mirrors, Only 39,000 Miles

KEEP IT COLD REEPER TRUCK 96 CHEVY
12 Ft. Insulated Box, Thermo King Freezer Unit, Only 15,100 Miles, Looks & Drives Like New, 6.5 Turbo Diesel, AT, A/C

6 WHEEL DRIVE
96 DODGE 3500 4X4
Great Tow Machine, Cummins Turbo Diesel, AT, A/C, Very Clean Inside & Out, Only 47,000 Miles

96 FORD F250 4 WHEEL DRIVE
Heavy Duty 3/4 Ton, Hard to Find, 5 Sp. Trans., Powerstroke Turbo Diesel, A/C, Tow Pkg., Local 1 Owner, 4 10 Gear, Great Tow Machine - \$17,900

WORK HORSE 98 DODGE 2500 4 WHEEL DRIVE
ST Model Only 15,000 Miles, It's Like New, 24 Valve Cummins Diesel, AT, A/C, Tow Pkg., Vinyl Floor

DIESEL SUPER CAB 4 WHEEL DRIVE
97 FORD F250 XLT, Super Sharp, Only 30,000 Miles Remaining New Tk Warranty Powerstroke Diesel, AT, A/C, 40/20/40 Seat Aluminum Wheels, Tow Pkg

F350 4-DOOR 4-WHEEL DRIVE 96 FORD XLT
Beautiful Truck! Powerstroke Turbo Diesel, AT, A/C, Loaded, XLT, 40/20/40 Seat, LJO Hubs, Aluminum Wheels, Priced Right - \$26,900

93 F350 CREW CAB DUALY
460 Auto, Fully Equipped, Tu-Tone Paint, Got To See This One!
\$16,900

1 TON CHEVY 95 CHEVY K3500 4X4
A Rare & Hard To Find Tk., 454 I.I. V8, AT, A/C, Very Strong Engine, Great Tow Machine, Clean Inside & Out - \$14,900

POWERHOUSE POWERSTROKE 97 FORD F350
4 WHEEL DRIVE CREW CAB
Nice To Drive, Room for the Family + Power To Pull Loaded, XLT, 40/20/40 Seat, CD Player, Tow Pkg., Aluminum Wheels

16,000 ORIGINAL MILES. THE NICEST ANYWHERE GUARANTEED, 95 DODGE 350 LE CLUB CAB DUALY 4X4 Strong Cummins Turbo Diesel, AT, A/C, Loaded, LE Pkg, Capt Chairs, Gooseneck & Class 3 Hitches

L-PAK DUMP 93 FORD F350 4 WHEEL DRIVE
Diesel Power, 5 Sp. Trans., Boss V-Plow, Tow Pkg Works Real Nice