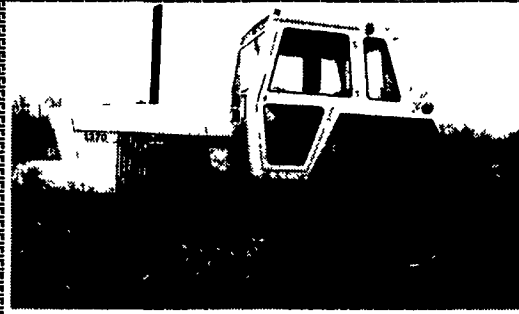


Diesel and Electronic Fuel Injection Specialists

AMBAC BOSCH Cummins
STANADYNE C.A.V. Caterpillar

CENTRAL PENN PUMP CO.

2700 Cumberland St.
Lebanon, PA 17046
717-274-0665



1370 Case
Trans rebuilt, dual remotes, differential lock,
CAH, sharp, field ready
Lanc. Co. 610-593-6112



INVENTORY REDUCTION SALE

Miller Big Blue 251D
\$2,200

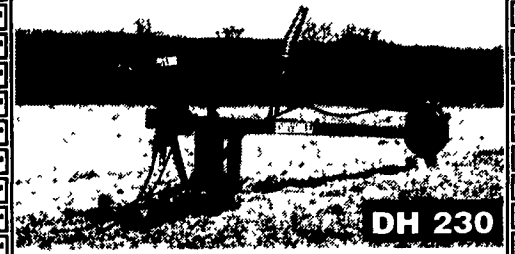
300 Amp Miller
Electric Stick Welder
\$300

Lincoln 225
\$900

DELIVERY AVAILABLE
IN LANCASTER CO.

FISHER'S FARM SHOP

56 Forrest Manor Rd.
Lincoln Univ., PA 19352
610-869-4477



DH 230

DRY HILL

FARM SHOP
554 N. Cross Roads
Lykens, PA 17048-9744
(717) 365-3109 Call 8:00-8:30 a.m.
Toll Free 1-877-246-3503

99 Dry Hill 32' Lagoon Pump.....CALL
00 Dry Hill 32' 4 Wheeler Lagoon Pump.....CALL

Attention Manure Haulers -
Rentals Available Immediately

RENTALS AVAILABLE AT:

Rovendale Ag. Barn Eq.
Watsontown, PA (570) 538-9564
Daniel JR Petersheim
Gordonville, PA (717) 768-8577
McMillen Bros.
Loysville, PA (717) 789-3961

Forklifts & Machinery

Baltimore, MD Call Alan Day or Night 410-337-3570

Check out our website www.hyeq.com

FORKS...FORKS...FORKS...
\$150 & up
per pair



15,000#
Hyster S150A,
LPG, 2 Spd Auto,
97"x129" 5", fork
positioner,
48" forks
\$14,000

4000# Hyster
1995,
2 Stage Mast,
LPG,
Excel. Cond.
\$6,500

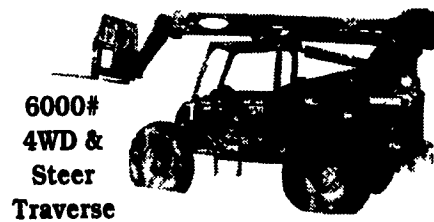


15 TON P&H RT CRANE,
60' Boom, Detroit Diesel, 2nd
Winch On Carrier
\$12,000

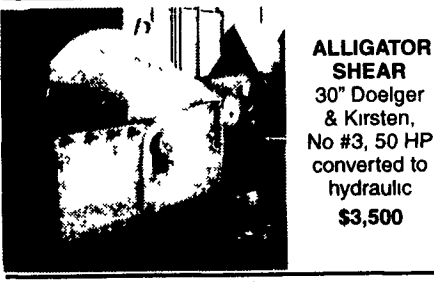
COLEMAN TUG

4WD
& Steer,
Gas,
1967
\$6,500

Many Machines
Not Listed.....CALL

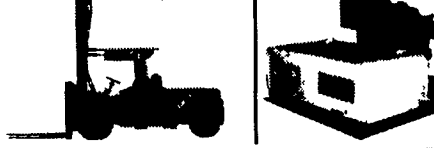


6000#
4WD &
Steer
Traverse
44' Lift, JD Diesel, 1600 Hrs., Excellent
Cond.....\$40,000

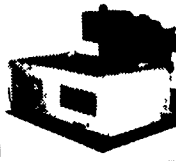


**ALLIGATOR
SHEAR**
30" Doelger
& Kirsten,
No #3, 50 HP
converted to
hydraulic
\$3,500

25,000# HYSTER H250
LPG, 2 stg, 15'
lowered, 20' lift 7' forks,
S/S, 3 spd. auto
(mono-trol)
\$17,500



START-ALL
Portable Hot Shot
12 & 24 Volt,
600 Amp
\$1,800



**KOHLER
GENERATOR**
20 KW,
Diesel,
211 Hours
\$4,500

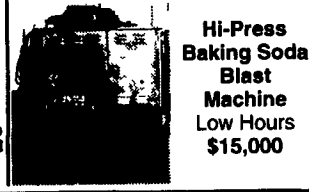


6000# A/C
Dual Tire,
Gas
\$5,000
Tires Filled



Cat V60
3 stage,
cab,
automatic,
gas
\$6,000

7000#
Hyster
Diesel
\$8,000



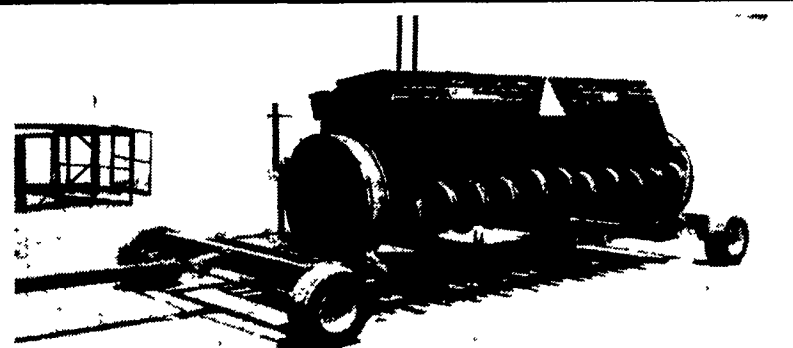
Hi-Press
Baking Soda
Blast
Machine
Low Hours
\$15,000



Koehring 1066
Excavator
Bad Engine,
LABOUNTY SHEAR,
Excellent
\$20,000

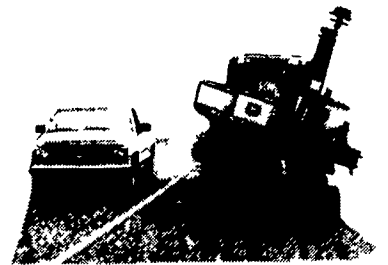


Many Cat
Generators
Must Sell



TRANSPORT WAGON

- Planter
- Drill
- Stalk Shredder
- Custom Made To Your Equipment



643 Hereford Rd.,
Elizabethtown, PA 17022
(717) 361-9400

Tandem Rake Hitch • Crowd Gates



CAT BACKHOES			
426	1990	Cab, 2WD, 60% Tires, 1724 Orig. Hrs.....	\$23,000
CAT LOADERS			
D3B	1985	Canopy, 50% U/C, 6-Way Blade.....	\$20,000
D3CLGP	1998	Canopy, 75% U/C, 6-Way Blade.....	\$61,000
D3CIII	1994	Canopy, 30% U/C, 6-Way Blade.....	\$29,000
D4H	1987	Canopy, 50% U/C, 6-Way Blade.....	\$34,000
D4HXLIII	1993	Canopy w/Sweeps, 50% U/C, 6-Way Blade.....	\$50,000
D5C	1998	Canopy, 60% U/C, 6-Way Blade.....	\$66,000
235C	1989	92,800 Lbs., 10'8" Stick, 36" Pads, 42" Bucket.....	\$56,000
312	1994	28,000 Lbs., 9'10" Stick, 24" Pads, 24" Bucket.....	\$56,000
320L	1996	44,910 Lbs., 9'7" Stick, 32" Pads, 54" Bucket.....	\$97,500
330BL	1997	75,000 Lbs., 12'10" Stick, 34" Pads, 48" Bucket.....	\$119,900

CAT CRAWLER LOADERS			
973	1988	Cab Panels, GP Bucket, 30% U/C.....	\$32,000
977L	1973	Cab, GP Bucket, 45% U/C.....	\$16,000
CAT PUMPS			
BG210B	1993	8'-13' Carlson Easy Screed III.....	\$69,000
BG225	1986	8'-16' Screed.....	\$26,500
CP563C	1996	Canopy, 84" Pad Foot Drum.....	\$71,000
CS563C	1997	Canopy, 84" Single Drum.....	\$77,000
Case 580K	1988	Cab, 2WD, E-Stick.....	\$11,000
J. D. 310D	1995	Cab, 4WD, E-Stick, 50% Tires.....	\$26,000
J.D. 490E	1996	27,000 Lbs., 10' Stick, 30" Bucket w/Hoe Clamp....	\$42,000
Blaw Know	1997	8'-13'6" Screed.....	\$109,000

Color Photos Available On Our Web Page www.Ransome.com



Tom Rosser
trosser@Ransome.com

Darrin Hogeboom
dhogeboom@Ransome.com



800-525-3135