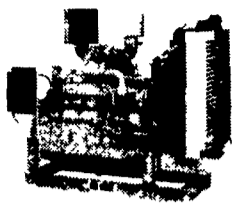


Diesel Engine Service

13 Pleasant Valley Road • Ephrata, PA 17522
PHONE: 717-733-3890 • FAX: 717-738-3146

DETROIT DIESEL & JOHN DEERE



- Parts • Service
- Rebuilding
- New JD Engines & Power Units
- Exchange Engines
- Rockford Clutch
- Parts • Funk Gear Reductions • Rebuild Kits • Gen Sets

Call Us For Your Power Needs

- 50 HP - 271 Detroit Powerunit.....\$4,250
- 75 HP - 353 Detroit Power Unit.....\$4,250
- 100 HP - 6329 John Deere Powerunit.\$3,800
- 125 HP - 4276T - JD Power Unit.....CALL
- 238 HP - 6V71N Detroit Powerunit.....\$6,200
- 39 KW - 4045D - JD Gen Set.New - CALL
- 100 KW - Detroit 3 PH Gen Set.....\$6,500

Spring Garden Repair

145 Spring Garden Rd, Kinzers, PA 17535
Isaac S Stoltzfus

Complete Gas & Diesel Engine Rebuilding
Head Rebuilding Cast & Aluminum Crack Repair
Flywheel Grinding Block Boring & Slewing
Align Boring Surface Grinding Head Rebuilding
Cast & Aluminum Welding

Rebuilt Heads . New & Rebuilt Waterpumps
New & Reground Cranks
Rebuilt Cylinder Heads . Oil Pumps
Engine Components & Kits

Perkins . Peugeot . Deutz . Case
Massey . JD . Ford . Isuzu . Oliver
Farmall . International . Nissan . Toyota
Ag . Industrial . Forklift



NOTICE

**EXTENDED PARTS DEPARTMENT
STORE HOURS
EFFECTIVE MONDAY, APRIL 3, 2000**
To Better Serve You During The Busy Planting Season
APRIL - MAY - JUNE
Mon., Tues., Thurs. & Fri. 7am-8pm
Wed. 7am-6pm; Sat. 7am-3pm

**BINKLEY-HURST
BROS. INC.**

133 Rothsville Station Rd.
P.O. Box 0395
Lititz, PA 17543-0395
(717) 626-4705 1-800-414-4705

Fax 717-626-0996

www.binkleyhurst.com



FOR SALE:

5 Ft. Western Snowblower
w/2 Cyl. Wisconsin Engine,
Excellent Condition..... \$1000

Bradley - Small Disc
for Garden Tractor.....\$50

Crankshaft for F20 Farmall.....\$75

Cylinder Head for F20 Farmall.....\$75

IH Front Mounted Blade to fit
Farmall C - Nice Shape.....\$500

IH Front Mounted Blade to fit
IH 422, 444, Etc., Nice Shape....\$500

IH Front Mounted Blade to fit
Cub Cadet 105.....\$50

Nice Homemade Dozer Blade
w/Cylinder to fit Oliver
HG Cletrac.....Make Offer

610-926-2441

8-5 - Ask For Ann

Excellent Ford Tractors

- 8770, 4WD, super steer, 4 remotes, 20 8x42, 900 hrs
- TW10, cab, air, 18 4x38, DP, dual remotes, 5,600 hrs
- 8600, cab, DP, dual remotes, 8x38, weights, 4,500 hrs
- 7740 SLE, canopy, weights, 18 4x38, 2,100 hrs
- 7710 II, cab, air, 4WD, 18 4x34, 1991 w/ALO ldr, 3,100 hrs
- 7710, canopy, DP, 18 4x34 w/Bush Hog ldr 2 700 hrs
- 7610 II, cab, air, 2WD, 18 4x34, 1989, 2,100 hrs
- 7610, DP, dual remotes, 16 9x38, 1,700 hrs
- 7610, rollbar, DP, dual remotes, 18 4x34, 4,800 hrs
- 7000, flat deck, DP, dual remotes, 4,000 hrs
- 6635, 4WD, canopy 24x12 shuttle, triple remotes, 200 hrs
- 6610, rollbar, DP, dual remotes, 16 9x30, 3,400 hrs
- 5640 SLE, 4WD roll bar 18 4x30 w/Ford 7411 ldr 1,000 hrs
- 5000, DP, 15 5x38, 1 remote, 5,100 hrs
- 4630, rollbar, shuttle w/Ford ldr, 500 hrs
- 4600 SU, diesel, 14 9x28, dual remotes, 1,200 hrs
- 4600 SU, diesel, 14 9x28, 1 remote, 1,700 hrs
- 4600 SU, diesel, 16 9x24 w/front snow blade, 3,300 hrs
- 4100, diesel 8 spd w/Dunham-Lehr QT ldr, 2,400 hrs
- 3930, 4WD, 8x8 shuttle w/Ford ldr, 450 hrs
- 3600, gas, 8 spd, PS, 13 6x28 w/Ford ldr
- 3000, diesel, 8 spd, PS w/QT ldr
- 2000, gas, 8 spd, PS, 13 6x28
- JD 4050, cab, air, quad, 18 4x38, 3,400 hrs
- JD 6400, rollbar, pwr quad, 18 4x38, R&P axle, 2,500 hrs
- JD 6300, canopy, syncro, 15 5x38, dual remotes, 1,000 hrs
- JD 2755, cab, air, hi-low, dual remotes, dual PTO, 2700 hrs
- JD 2755, canopy, hi-low, dual remotes, dual PTO, R&P axle, 3,000 hrs
- JD 2355, canopy, dual remotes, 16 9x30 w/JD ldr, 2,000 hrs

Equipment

- FNH 358 grinder mixer w/extension & scales
- Gehl 125 grinder mixer w/unload extension
- Brillion 4 row deep till cultivator
- NH 474 7' haybine
- Ford 951 6', 3 pt rotary mower
- JD 146 loader w/valve, off 2640
- Ford 7411 loader w/40 series brackets
- Ford 7210 loader w/bucket fits 5000 thru 7610
- DUAL 210 loader fits 7700 & 7710, 2WD & 4WD
- Weights to fit most Ford tractors

All Tractors Tested On Our Farms.
Tractors Stored inside.
-Please Call For Appointment-

Lease & Financing Available

Burkholder Bros.

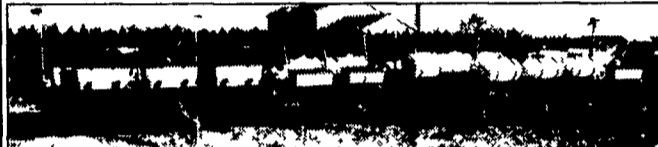
Lebanon, PA 17042
(2 miles from Schaefferstown on Rt. 419 South
Turn right on Flintville Rd.)
2 Locations

717-272-2352 717-949-2123

Lloyd 330 Crest Rd. Lebanon, Pa
Leon 400 Flintville Rd. Lebanon, Pa.

SPRING TIME IS BUYING TIME! See Binkley & Hurst TODAY and SAVE \$\$

**SUPER DEALS ON
PRE-OWNED USED PLANTERS!**
Now Is The Time To Purchase Out-Of-Season And
SAVE BIG!



Put A Nice Clean
Planter In Your Shed
& Save Now!

1) KINZE 2000 6-ROW
PLANTER with Dry Fertilizer
with Hopper Toppers & Cross Fill
Auger, Seed Hoppers with
Topper Extensions - \$8,500. UM
4417

2) JOHN DEERE 7000 4-Row
Loaded - \$3,600. UM 4392.

3) IH 800 6-ROW with Dry
Fertilizer - Now Only \$1,700.
UM 4000.

4) KINZE 2000 SERIES 6-ROW
NARROW DOUBLE FRAME
PLANTER, No-Till Frame -
\$17,500. UM 4381.

5) ALLIS CHALMER 11-ROW
NO-TILL BEAN PLANTER -
\$1,450. UM 4375.

6) JOHN DEERE MAX MERGE
II MODEL 72 CONSERVATION
PLANTER w/Seed Flex
Hangers, 12-Row 30" Spacing,
Frame Mounted No-Till Coulters,
Insecticide, Model 250 Monitor -
\$21,500. UM 4372

7) JOHN DEERE 7240 MAX II
6-Row N30, 200 Gallon Liquid
Tanks, Frame No-Till Insecti-
cide, Buy Before Serviced at
Only \$11,900. UM 4288.

8) JOHN DEERE MODEL 7000
8-ROW PLANTER, with Liquid
Fert, Squeeze Pump, Double
Disc Openers, No-Till Units,
Monitor, Rubber V Closing Press
Wheels, Insect, and Markers.
UM 4348. A Lot Of Planter For
the Price! Come & See!

9) JOHN DEERE 4-ROW, Needs
Some Work - Only \$1,100. UM
4091.

10) JOHN DEERE 6x30 7000
NO TILL. UM 4096

11) MONOSEM NGT SPECIAL-
TY PLANTER 6-Row
20" Spacing, 3 Pt Advance
Frame, Vacuum, Markers
UM 3826

12) GREAT PLAINS 6030,
6-Row 30" Spacing, Dry Fert
with Unit Mount No-Till Coulters,
Radar Monitor, Planted Approx.
400 Acres, Almost New UM 123

Before You Purchase
A New JD Planter
Consider a Good Deal
On An (Almost New)
Used John Deere
Model 1750!



UM 4283
Vacuum 6-Row Narrow
30", Liquid Fert, with Squeeze
Pump, Frame Mounted No-Till
Coulters, Hinged Tongue, used
2 Seasons, Loaded

John Deere 7000
Conservation Planter
UM 4075
6-Row Narrow with New Kinze
Frame Mounted No-Till Coulters,
New Double Disc Fert. Openers,
All New Yetter Row Units, Liquid
Fertilizer, Insecticide, Monitor,
Row Markers, Entire Frame
Work Blasted & Repainted, Like
New Condition But Priced A Lot
Less Than New. Stop In and
Let's Make a Deal Today!

Nice Clean John Deere
4-Row Planter w/Liquid
Fertilizer UM 3687
\$4,900

13) JOHN DEERE 7000
PLANTER, 4-Row with Liquid
Fert., with Monitor & Insecticide -
\$4,900. UM 4012.

14) IH 800 6-Row Narrow with
Liquid Fert., 1000 PTO, Monitor -
\$2,750. NOW \$1,980. UM 3708.

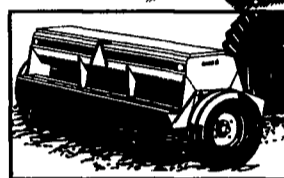
15) JOHN DEERE 4 ROW X 30
7000 PLANTER with Liquid
Fertilizer Reconditioned -
\$4,000. NOW \$3,500. UM3687.

16) KINZE 6-ROW BY 30" ROW
SPACING PT Pull-Type Planter -
\$6,500. UM 3913

Hawk Bilt Tandem Axle
Spreader
UT 4385
As Is - \$650
Tow Away a
Bargain Today!



QUALITY NO-TILL DRILLS



1) GREAT PLAINS 15 FOOT, Late
Model with Coulter Bar and Double
Disc Openers and Press Wheels, T-Bar
Adjustable, Very Good Cond. UM
4178. Ask For Ray! \$14,900 Less
Any Disc.

2) JOHN DEERE 8300 18x7 with
Double Disc Openers, Grass Seeder,
One Side May Need Some Repair - \$2,200. UM 4114.

3) GREAT PLAINS 12 FOOT NO TILL on Coulter Cart. UM 4097.
Ask For Ray!

4) CASE IH 5100 18x7 with Press Wheels, Double Disc Openers,
Front Mounted Grass Seeder, Fertilizer, Very Good Condition -
\$4,995. UM 4395

Don't Miss This Special!
Call Today For Details or
Better Yet STOP IN and
make your Purchase!

1) UM 4009 DEDUCT \$800
SPEED KING 36 Foot Bale
Elevator. Was \$1,575, Less \$800
PAY ONLY \$775

2) UM 3923 DEDUCT \$1,000
GEHL 3038 2-Row Narrow
Corn-head, Good Condition. Was
\$1,950, Less \$1,000 PAY ONLY
\$950

3) UT 4304 DEDUCT \$4,000
OFF CAT Model R80 2WD
Rough Terrain Straight Mast
Forklift, 8000 Lb., 21 Foot with
Side Shifter. Was \$16,850, Less
\$4,000 PAY ONLY \$12,850

4) UT 4330 DEDUCT \$1,000
CASE 1070 2WD Tractor, Rated
108 HP, Open Station with 4 Post
Canopy, Rebuilt PTO, 540-1000
PTO, 18.4x38 Tires. Was \$8,850,
Less \$1,000 PAY ONLY \$7,850

5) UT 4358 DEDUCT \$3,000
from a GEHL 52 HP Model 5620
One Owner Skid Loader with 72"
Wide Bucket, Approx. 2,330 Hrs.,
Engine Fresh Rebuild in Our

Shop. Was \$12,800, Less \$3,000
PAY ONLY \$9,800

6) UM 3708 DEDUCT \$1,770
from the Original Price of an IH
Model 800 6-Row Planter with
Liquid Fert. & Ketton Seed
Firmers. Was \$3,750, Less
\$1,770 PAY ONLY \$1,980

7) UM 4000 DEDUCT \$800 from
an IH 800 6-Row Planter w/Dry
Fert. Was \$2,500, Less \$800 PAY
ONLY \$1,700

8) NH MODEL 40 1000 PTO
Blower - \$950.

9) PEQUEA 2500 GAL. V
SPREADER.

10) HAWK BILT TAN AXLE
SPREADER

Call Today For Details or
Better Yet STOP IN and
make your Purchase!

MISCELLANEOUS EQUIPMENT

1) DILLER 3600 GALLON TOP
FILL TANKER with Auger, 540
PTO, Bottom Rear Spread, with
21.5x16.1 Tires - \$5,600.
UM 4383.

2) USED KNIGHT 8030 PRO
TWIN V SPREADER.

3) NEW HOLLAND SINGLE
AXLE MODEL 305 V-TYPE
SPREADER - \$2,875. UM 4278.

Great In-Field Truck Tires!

315-70R 22.5 Bandag Recaps
w/Waste Hauler Tread Mounted
on Dayton Wheels (set of 2)
UM 3520
Ask For Dean



Used Heavy Duty Slinger
Spreader with Heavy
Duty Hammer Impellers
-Pequea Tandem Axle
2500 Gallon Size - Cheap Price
If You Don't Want to Spend
A Lot of Money to Haul Manure,
Put This Spreader To Work!

BINKLEY & HURST BROS., INC.

133 Rothsville Station Rd.
P.O. Box 0395, Lititz, PA 17543-0395
Located 1/2 Mile North of Rothsville

(717) 626-4705Z

www.binkleyhurst.com

1-800-414-4705

Fax 717-626-0996

Visit us on the Internet at <http://www.casecorp.com>
Case IH is a registered trademark of Case Corporation

