

**AMERICAN SHELTERS WINTER 2000
SPECIALS ON FREESTALL BARNS, HOLDING
AREA BARNS, CALF BARNS, HEIFER BARNS,
EQUIPMENT STORAGE, COMMODITY
BUILDINGS, MANURE STORAGE, ETC.**

Just a few examples of proven, cost effective ways to meet the demanding challenges that we face in American Agriculture today. Listed below are some size and price examples that will help you meet your building needs.

***30x102**
shell price: \$5,416.00
lumber pkg: \$1,065.00
endwall: \$1,020.00
\$7,501.00

\$2.40 per sq. ft. cost

***35x100**
shell price: \$7,051.00
lumber pkg: \$1,170.00
endwall: \$1,150.00
\$9,371.00

\$2.50 per sq. ft. cost

***38x50**
shell price: \$4,259.00
lumber pkg: \$ 634.00
endwall: \$1,240.00
\$6,133.00

\$3.20 per sq. ft. cost

***42x60**
shell price: \$6,680.00
lumber pkg: \$ 792.00
endwall: \$1,445.00
\$8,917.00

\$3.50 per sq. ft. cost

***42x80**
shell price: \$ 8,640.00
lumber pkg: \$ 1,021.00
endwall: \$ 1,445.00
\$11,106.00

\$3.30 per sq. ft. cost

***42x100**
shell price: \$10,848.00
lumber pkg: \$ 1,260.00
endwall: \$ 1,445.00
\$13,553.00

\$3.20 per sq. ft. cost

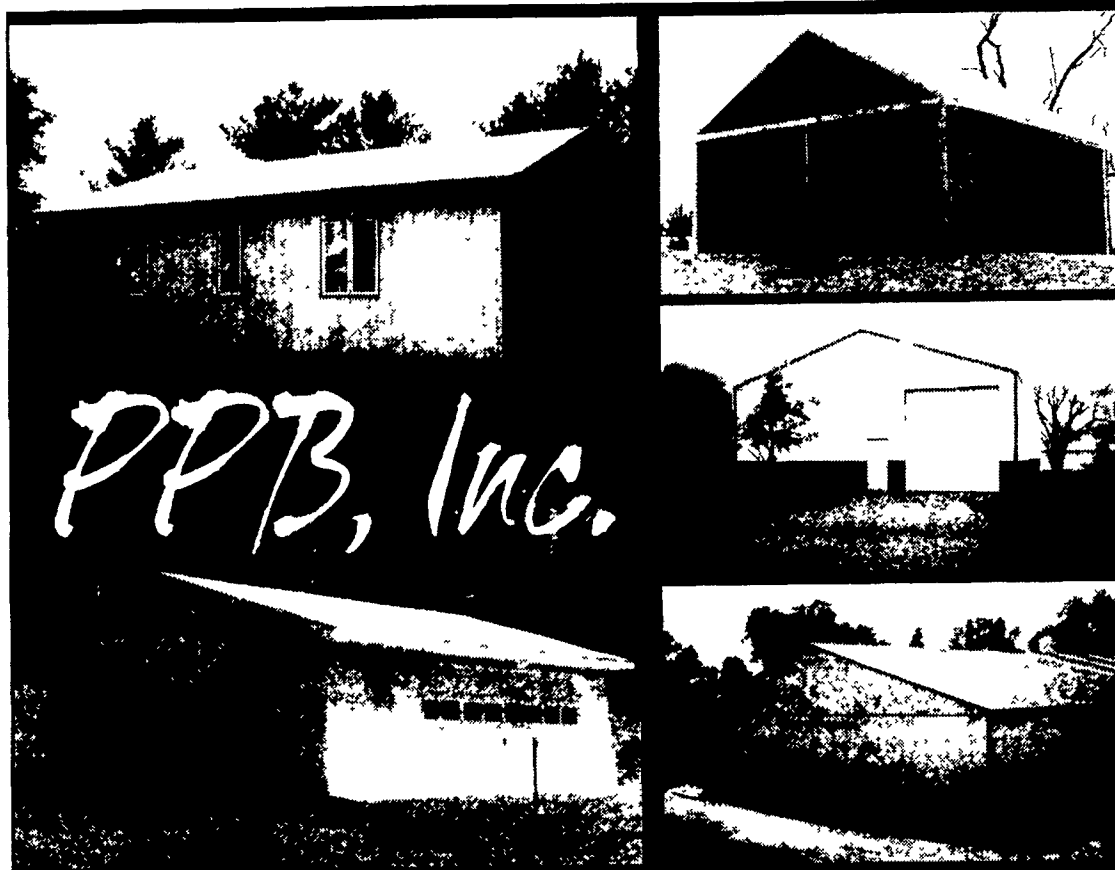
***42x140**
shell price: \$14,100.00
lumber pkg: \$ 1,700.00
endwall: \$ 1,445.00
\$17,245.00

\$2.90 per sq. ft. cost

***60x100**
shell price: \$18,900.00
lumber pkg: \$ 2,400.00
endwall: \$ 1,620.00
\$22,920.00

\$3.80 per sq. ft. cost

800-491-7221



Pioneer Pole Buildings, Inc.

716 South Rt. 183, Schuylkill Haven, PA 17972
Toll Free 1-888-448-2505 Fax 1-888-448-2515

Metal Roofing and Siding

36" Coverage

Excessive Inventory Sale...

Pieces		Sheet
155	12' Galvanized	\$10.80
135	14' Galvanized	\$11.20
115	16' Galvanized	\$12.60
105	18' Galvanized	\$16.20
95	20' Galvanized	\$18.00

Pieces	Accessories	
150	10' J Channel	White
100	10'6" Ridge Cap	White
100	10' Corner	White
100	12' Corner	White
100	14' Corner	White
100	10'6" Ridge Cap	Galvanized

MARTIN'S ROOFING

258 Walnut Bottom Road, Shippensburg
Rt. 81, Exit 10 • (717) 532-3460

- 25 year warranty Everlast painted steel (your choice of color on roof, sides, trim).
- Steel is G-100 painted and heat roll-formed by Everlast Inc. the best known roofing made.
- 40# per sq. foot snow load on trusses.
- Financing Available
- Call for free literature or see us at www.pionrpole.qpg.com



Member PA Builders Association
Member National Frame Builders Assoc
Company Owned Crews

Top Quality Workmanship
Top Quality Materials
Quick Construction Date



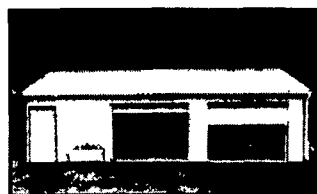
Compare the Savings...

Special Values on Custom Pole Buildings!



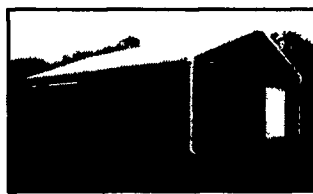
24x24x8 \$5,500

- (1) 3'x6'8" six panel entry door
- (1) 16'x7' insulated raised panel overhead door



28x32x10 \$7,650

- (1) 3'x6'8" six panel entry door
- (2) 9'x8' insulated raised panel overhead doors



40x60x12 \$16,000

- (1) 3'x6'8" six panel entry door
- (1) 12'x10' overhead door
- (1) 12'x11' sliding door



50x96x14 \$27,200

- (1) 3'x6'8" six panel entry door
- (1) 20'x14' split sliding door

COMPARE OUR SAVINGS - OUR PRICES INCLUDE MATERIALS, LABOR, DELIVERY, APPLICABLE TAXES AND DESIGN PLANS. CALL TODAY - FREE ESTIMATES AND BROCHURES, WITH FINANCING AVAILABLE!

- Custom pole buildings - residential, agricultural, commercial, & equine
- Company-owned construction crews
- Maintenance-free painted steel with 25 year warranty - your choice of color on roof, sides, and trim!

Visit our web-site today!

www.conestogabuildings.com



CONESTOGA Buildings

202 Orlan Road, New Holland, PA 17557

1-800-544-9464