

# SimConference Convenes In Pennsylvania

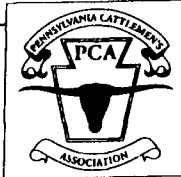
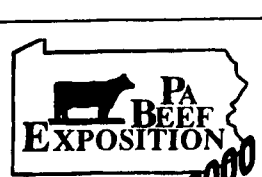
The Pennsylvania Simmental Association hosted a well-attended northeastern Sim-Conference, the first one held since 1998. On February 25-27, a total of 34 state association leaders representing eight states were in attendance to hear discussions of the ASA programs, long-range planning, and beef industry trends. The conference was held on the campus of Penn State University.

The second conference is scheduled to be held at North Carolina State University, Raleigh, on April 7-9. At least three such conferences are scheduled for 2002.

SimConferences are designed to bring state association officers and leaders, together with ASA officials and faculty of land-grant university animal science departments. Programs include dissemination of information, opinion input, and the improvement of communications and relations among the involved associations.

Officials were pleased with the turnout and the exchange of information. States represented and their members are as follows: Indiana, Judy Miller, Indianapolis. Kentucky, Dalton Lundy, Bardstown. Maryland, Wallace and Justin Harward, Forest Hill; and Shane Smithson, White Hall. Maine, Sally Beal, Edgar Hussey, Jr., and Joyce and Robert Dyer, all from South Berwick. New York, Joel Reach and Cheryl Eighmey, Unadilla; Laurie Palmer, New Berlin; Sharon Harrington, Campbell; and Jeanne White, Groton. Ohio, Robert Winter, Amanda; Karole Skidmore-Roth, Mt. Gilead; Chris Dickson, Edison; and Jerry Lees, Newark. Pennsylvania, Ginger and Jerry Woolcock, Orangeville; Bill and Natushka Shoemaker, Buffalo Mills; Arnold McClure, Shirleyburg; Wayne and Brenda Stough, Spring Grove; Vicki and Gary Warner, McAlisterville; John Myers, Dal-

lastown; Bob and Connie McQuiston, Stoneboro; Larry Bullis, Gettysburg; Larry Hughes, New Oxford; and David Downs, Stoneboro. Virginia, Ken and Susie Mohler, Rockbridge Bath.

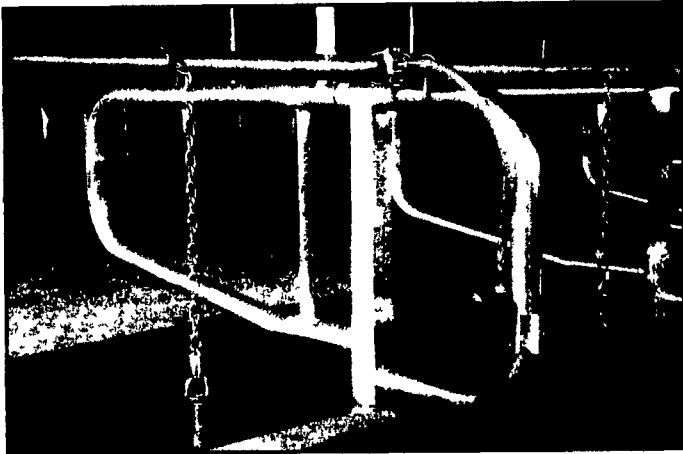
March 30 to April 2, 2000  
**At The Penn State Ag Arena**



In the photo from left, standing, Bob McQuiston, ASA trustee, eastern region; Dr. Jerry Lipsey, executive vice president; and Marty Ropp, director of commercial operations. Standing, Dr. John Commerford, Penn State faculty, beef production; Dr. Erskine Cash, Penn State faculty, beef production; and Bill Shoemaker, president, Pennsylvania Simmental Association.

**Sturdy Built**

**Galvanized Tie Stalls**

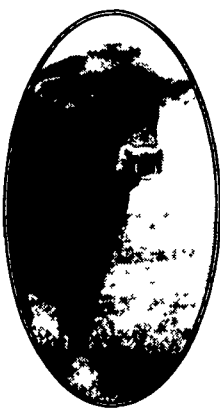


Stainless Steel Sleeve for Critical Corrosion Protection  
High Tensile Galvanized Tubing • Standard & Heavy Duty Models

Manufactured By: **Sturdy Built**  
255 Holtzman Road Reinholds, PA 17569  
717-484-2233 • FAX: 717-484-2502

Fabricators of Galvanized Barn Equipment, Gates, Loop Stalls, Headlocks

Braunvieh, Angus & Crossbred Cattle



**I & L CATTLE COMPANY**

*Improve Profits . . .*

- Heavier Weaning Weights
- Higher Quality Grade,
- Lower Yield Grade
- More Ribeye, More Marbling, Less Backfat
- Early Maturing, Easy Flething, Fertile Females

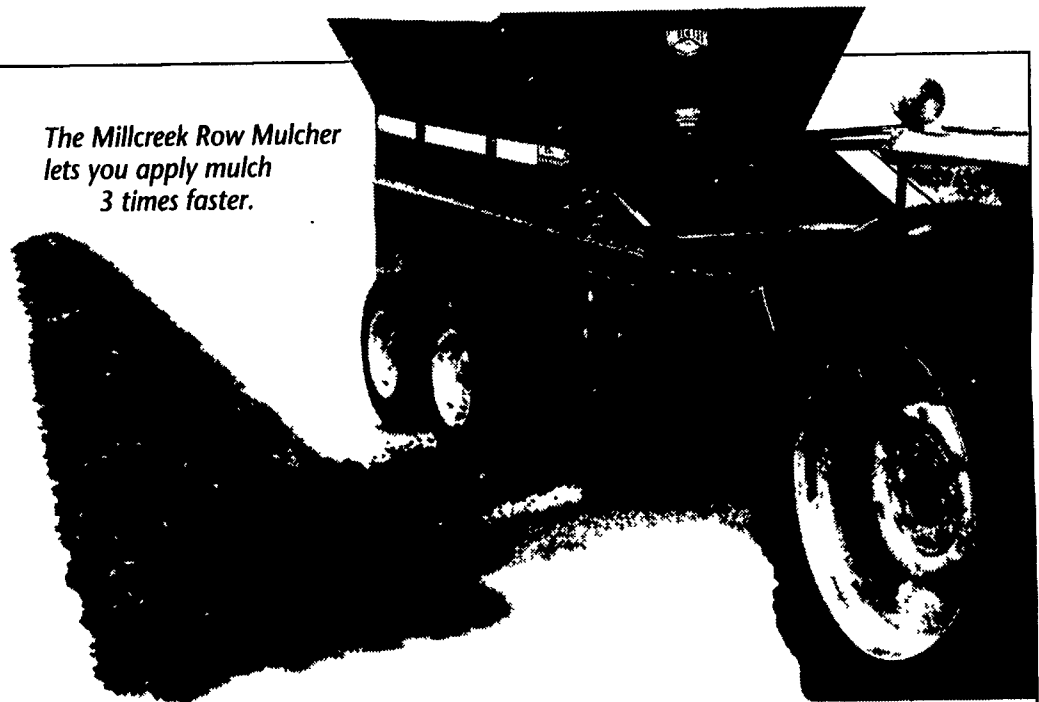
*. . . From Every Angle!*

**BULLS FOR SALE & LEASE**

Lamont & Leigh Ann Ennis  
Ph. 716-337-3032 or 716-480-7980

*Visit Us at Beef Expo &  
See the Difference Braunvieh Makes*

The Millcreek Row Mulcher lets you apply mulch 3 times faster.

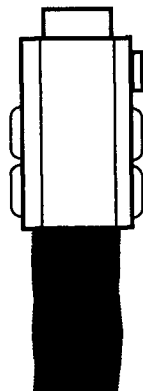


**Apply compost and organic mulch to any row crop automatically**

From tree fruit to vegetable beds, from bramble crops to vineyards, organic mulch and compost can reduce chemical input for weed suppression, retain soil moisture, and improve soil fertility by adding organic matter to sandy and clay soils.

Now Millcreek eliminates the costly labor needed for organic mulch and compost application. The remarkable new Millcreek Row Mulcher works with all types of organic material, and even lets you adjust the depth and width of the mulch rows from 12" to 120" wide, from 1/2" to 6" deep.

Starting under \$6500, no other machine compares when it comes to capabilities, versatility, and cost effectiveness. Rugged construction. Six sizes, from 3.4 to 20 cubic yard capacity. Custom designs. Call today for a free color brochure, or to discuss your specific needs.



**YOUR CHOICE**  
Millcreek Row Mulchers also let you drop spread in the center of rows.



Bird-in-Hand, PA 17505

**1-800-311-1323**  
[www.millcreekmfg.com](http://www.millcreekmfg.com)