

SINCE 1936

# M.M. WEAVER & SONS, INC.



**MASSEY FERGUSON**  
Tractors And Combines

Leola, PA 17540 Phone: (717) 656-2321

Located: 4 miles West of New Holland on Rt. 23, 1 1/2 miles Northeast of Leola on the No. Groffdale Rd., 1 mile on the right, opposite Groffdale Mennonite Church.



Meeting all your harvesting needs!

### USED COMBINES

1996 MF 8570 4x4 Combine, 1247 Hrs, w/6 Row 863 Corn Head.....	\$130,000
1995 MF 8570 Combine, 1138 Hrs.....	\$78,000
1994 Case IH 1688 Combine, 418 Hrs., w/8 Row Corn, 15' Flex Head, and 20' Flex Head.....	\$148,000
1991 MF 8460 Combine, 3254 Hrs., w/Hillside.....	\$65,000
1990 MF 8460 Combine, 2649 Hrs.....	\$55,000
1990 MF 8460 Combine, 2744 Hrs.....	\$55,000
1990 MF 8460 4x4 Combine, 4026 Hrs., w/Hillside.....	\$48,000
1984 MF 860 4x4 Combine, 2479 Hrs.....	\$17,500
1981 MF 860 Combine, 3400 Hrs.....	\$9,500
1980 MF 760 Combine, 3647 Hrs.....	\$3,500
1979 MF 760 Combine, 1472 Hrs.....	\$6,000
1981 MF 850 Combine, 3187 Hrs.....	\$13,500
1978 MF 750 Combine, 4955 Hrs.....	\$3,500
1979 MF 550 Combine, Just Rebuilt.....	\$12,500

### USED TRACTORS

MF 399 4x4 with Loader 95 HP.....	\$26,500
MF 3090, 2WD, Cab, 95 HP.....	\$18,500
MF 1155 Cab Tractor, 140 HP.....	\$8,500
White 6125 4x4 Cab with Loader, 124 HP.....	\$46,000
MF 375 4x4, 63 HP.....	\$14,800
White 80 Four Wheel Drive, With Loader.....	\$18,800
MF 2745.....	\$12,500
MF 3650 4x4, 130 HP.....	\$32,000

### RENTAL AND DEMO MODEL TRACTORS

MF 390T - 2WD, 18 Speed Trans, 80 HP.....	\$29,000
MF 4270, 2 Wheel, 18x6 Trans 99 HP.....	\$33,000
MF 399-4 18 Speed Trans., 95 hp.....	\$34,000
MF 390 T-4 18 Speed Trans., 80 hp.....	\$32,500
MF 8160 4x4, 180 HP.....	

### USED HARVESTERS

84 NH 1900 4x4, 2800 Hrs., 4-Row Auger Base Corn Head and Hay Pickup.....	\$34,000
JD 3970 Harvester 3 Row Corn Hay Head.....	\$14,500
840 4x4 Corn Cracker 30.5R32 Tires, 1400 Cutter Hr., 6 Row Kempf Head.....	\$162,000
1999 Claas 840, 4x4 Harvester, Auto Lift, RU450 Corn Head, 10' Hay Head.....	Coming In
1999 Claas 880 4x4 Harvester, 503 HP Overdrive Trans, 550 Cutter HR, 12-1/2' Hay Head, Claas 6 Row Independent Corn Head.....	Coming In
New Holland 1890 S.P. Forage Harvester, 4 Wheel Drive, 4 Row Corn & Hay Head.....	\$13,800
New Holland FX25 Harvester 1500 Cutter HR Corn Cracker, 4 Row Corn Head, 10' Hay head.....	\$129,000
Gehl 1060 Harvester with 3 row Corn Head and 7 1/2' Hay Head With Metal Detector.....	\$8,900
Claas 4-6 row Corn Heads in Stock "Row Heads".....	CALL
83 New Holland 1900 4-Row Auger Base Corn Head with Hay Pickup, 1562 Hrs.....	\$34,000
1984 NH 2100 Harvester, 4x4, 3400 Hr., Hyd. Outlets, 4 Row Auger Base With Hay Pick Up.....	\$49,000
JD 3960 Harvester, 2 Row Corn Head, 5' Hay Head.....	\$6,400
JD 3950 Harvester, 2 Row Corn and Hay Pickup.....	\$10,500

### MANURE & FEEDING EQUIPMENT

Hagedorn 225 Hydro Push Spreader.....	\$4,000
Lucknow 285 TMR Mixer Wagon.....	\$7,500
Gehl 7210 TMR Mixer Wagon.....	\$4,900
Lucknow 220 TMR Mixer Wagon.....	\$12,500
Lucknow 285 TMR Mixer Wagon.....	\$4,900

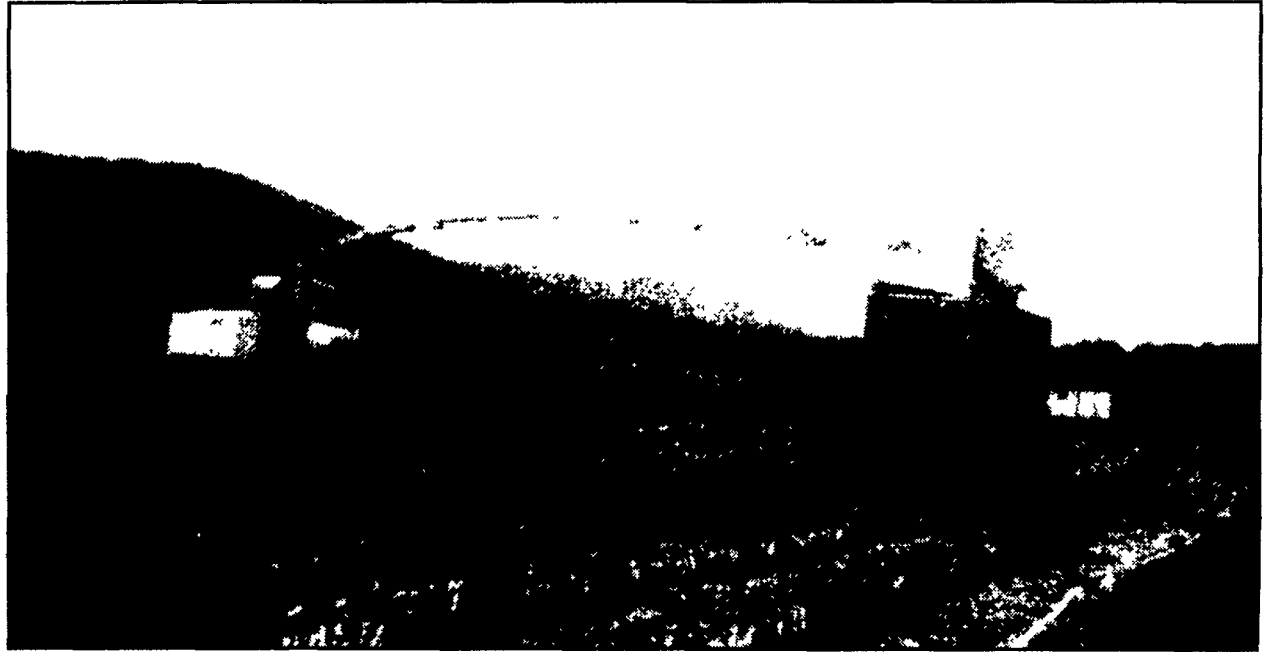
### HAY EQUIPMENT

1200 Claas Sq Baler 27"x48"-8' Demo Model.....	\$45,000
JD 335 Round Baler, 46x51.....	\$7,800
NH 634 Round Baler (Like New 500 Bale).....	\$9,600
Claas 66 Baler 4x5.....	\$9,000
Hesston 550 Baler 46x75.....	\$7,900
Demo Vicon 1511E 5x6 Round Baler.....	\$9,900

### MISC. EQUIPMENT

JD 125 Forage Wagon with Roof.....	\$1,800
Shaver Post Driver.....	\$1,750
Westfield Auger, 10"x70', PTO Driven.....	\$2,600
JD 205 Rotary Cutter, 5'.....	\$475
Brady 5' Flail Shredder.....	\$2,200
Brady 12 Ft. Flail Shredder.....	\$3,800
Tye 10' No Till Grain Drill.....	\$8,500

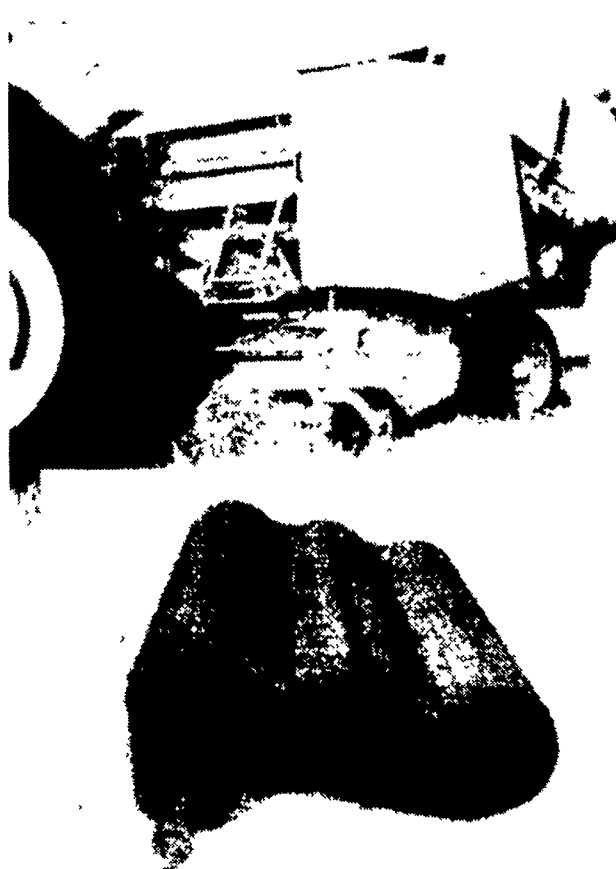
## Forage Harvester Performance Redefined - by CLAAS



Here's a good way to get through wet spots and keep truck on high ground. Photo shows a Claas 880 Harvester, owned by Paul Dotterer & Sons, Mill Hall, PA, working at Ag Progress Days this year. The truck drove 20 rows from the harvester.

## INTRODUCING THE ROLLANT® 250 WITH MAXIMUM PRESSURE SYSTEM

• Hay or straw • Heavy duty, high capacity



### FIXED CHAMBER ROUND BALER

- Dense 4' bales
- 83" wide pickup standard
- ROTO CUT® model available
- Double twine wrapping standard, ROLLATEX® net wrapping optional



Meeting all your harvesting needs!

### MPS

- Maximum pressure is achieved with the new hinged roller system



Case IH 7240 4x4, 195 HP, 1100 Hr  
**\$68,500**



1994 Case IH 1688 4x4 Combine with 8 row corn 15' flex head, 20' flex head, 400 Hr  
**\$148,000**



New Holland FX 25 Harvester, 1500 Cutter Hr., Corn Cracker, 4-Row Corn, 10-Hay  
**\$129,000**