

### Public Auction Register

Closing Date Monday 5:00 P.M.

of each week's publication

Internet Sale Register will be updated every Sat. at 2:23 P.M.

#### ATTENTION Auctioneers

All sales register info needs complete address, street, town, county & state.

FRI MAY 19 - 7 PM Horse Sale, New Holland Sales Stables, 101 W. Fulton St., New Holland, Pa.

SAT MAY 20 - 9AM Tools and related items - Roy Blauch Estate, 7040 Bates Drive, Annville, Pa Harry H Bachman, auct

TUES, MAY 23 - 9AM Quilt, Craft & Buggy To Be held at A&C Diffenbach Auction Inc 100 W Jackson St, New Holland Lanc Co, Pa 717-355-7253

WED MAY 24 - 9AM Quilt & Craft To Be held at A&C Diffenbach Auction Inc 100 W Jackson St, New Holland Lanc Co Pa 717-355-7253

WED, MAY 24 - 9AM Farm Equip Tractors Truck Lots To be held at Wolgemuth Auction 109 N Maple Ave Leola Lanc Co Pa 717-656-2947

WED MAY 20 - 9:30AM Edgar Dewitt Estate, Susquehanna Co Inn time family on Rt 706

between Rush & Fairdale. Complete home filled with antiques, farm equip., buildings packed long auctions Shamrock Auction Service

FRI, MAY 26 - 1PM State Graded Feeder Pig Sales Carlisle Livestock Market Inc 548 Alexander Spring Road Carlisle Pa

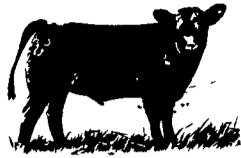
FRI, MAY 27 Horse Sale 8:30AM Tack 11 AM Horses Middleburg Livestock Auction Sales Inc Middleburg Pa

FRI MAY 27 - 12 Noon Quarter Horse Sale New Holland Sales Stables 101 W Fulton St New Holland Pa

#### JUNE 2000

SAT JUNE 3 - 8:30AM - Horse 10AM Mel's Stables 834 Wallace Rd., New Holland PA Mel Hoover, Auctioneer

## Dairy and Livestock Sales



### FEEDER SALE

Wed., Mar. 22  
7:30 PM

### Four States Livestock

Hagerstown, MD  
Exit 29 off I-70  
(301) 733-8120

FRI JUNE 3 - 10AM Heifer Sale New Holland Sales Stables 101 W Fulton St, New Holland Pa

TUES, JUNE 6 - Fat Cattle Sale Carlisle Livestock Market Inc 548 Alexander Spring Road Carlisle PA

TUES JUNE 6 - 7:45PM Feeder Cattle Sale Carlisle Livestock Market Inc 548 Alexander Spring Rd Carlisle, PA

WED, JUNE 7 - 9AM Lumber & Building Supplies To be held at Wolgemuth Auction, 109 N Maple Ave, Leola Lanc Co, Pa 717-656-2947

WED, JUNE 7 - 6:30PM Winross, Hess, Farm Trac & Toys To be held at A&C Diffenbach Auction Inc, 100 W Jackson St New Holland, Lanc Co, Pa 717-355-7253

FRI, JUNE 9 - 9AM Tractors Farm Eq & Supplies To be held at A&C Diffenbach Auction Inc 100 W Jackson St New Holland Lanc Co, Pa 717-355-7253

FRI, JUNE 9 - 1PM State Graded Feeder Pig Sales Carlisle Livestock Market, Inc 548 Alexander Spring Road, Carlisle, Pa

FRI JUNE 9 - 7PM Dairy Sale Anniversary Middleburg Livestock Auction Sales, Inc Middleburg, Pa

FRI JUNE 16 - 7PM Horse Sale New Holland Sales Stables, 101 W Fulton St New Holland Pa

TUES JUNE 20 - Fat Cattle Sale Carlisle Livestock Market Inc 548 Alexander Spring Road Carlisle PA

TUES JUNE 20 - 7:45PM Feeder Cattle Sale Carlisle Livestock Market Inc 548 Alexander Spring Rd Carlisle PA

WED JUNE 21 & THURS JUNE 22 - 8:30AM Wed Lawn & Garden Tractors misc items Thurs Misc items tires posts etc Farm Equip & tractors 6 miles S of Chambersburg Pa 1 mi E of Marion just E off I-81 at Marion along Rt 914 Marion Auction Service

FRI, JUNE 23 - 1PM State Graded Feeder Pig Sales Carlisle Livestock Market, Inc 548 Alexander Spring Road Carlisle, Pa

SAT JUNE 24 Horse Sale 8:30 AM Tack 11 AM Horses Middleburg Livestock Auction Sales Inc, Middleburg Pa

SAT, JUNE 24 - Antiques, house hold good 1087 Div Hwy Ephrata Christian S Garman owner Martin's Auction Service

WED JUNE 28 - 9AM Farm Equip Tractors Truck Lots To be held at Wolgemuth Auction 109 N Maple Ave Leola Lanc Co Pa 717-656-2947

## KISH VALLEY'S 2000 SPRING CONSIGNMENT HORSE SALE

Fri., March 24, 2000  
6:00 p.m.


Located at Kish Valley Dairy Sales at the corner of South Walnut St. and Front Mountain Road, Belleville, PA

Starting with Tack at 6:00 p.m.  
Horses at 8:00 p.m.

Bryan D. Imes, Auctioneer AU-001656-L RR1 Box 902 Port Royal, PA 17082  
Sherman Glick, Sales Manager 717-935-5195 717-248-0960

**MEL'S STABLE**

S  
E  
L  
E  
C  
T  
E  
D



C  
O  
N  
S  
I  
G  
N  
M  
E  
N  
T

**DRIVING, WORK HORSE SALE**  
**SAT., APR. 1, 2000 - 10:00 AM**  
**NOTICE: NEW SALE TIME 10 AM**

HORSES HITTED AT 8:30 A M SHARP  
SALE HELD AT 834 WALLACE RD., NEW HOLLAND, PA  
DIRECTIONS FROM RT 23 IN NEW HOLLAND, GO SOUTH ON BRIMMER AVE GO 2 MILES SOUTH ON NEW HOLLAND ROAD TO HILL RD TURN LEFT ON HILL RD PROCEED 1 2 MILES TO SALE ON THE LEFT FROM RT 340 EAST OF INTERCOURSE TAKE NEW HOLLAND RD, 2 5 MILES TO HILL RD, RIGHT ON HILL RD TO SALE ON LEFT

APPROX. 75 HEAD OF STANDARD BRED HORSES  
APPROX. 50 HEAD OF SADDLE BRED HORSES

- 1 Load Driving Horses for Elam Stoltzfus
- 1 Load Driving Horses for Christ Z Stoltzfus
- 1 Load Driving Horses for Jerome Wanner
- 1 Load Driving Horses for Stephen Stoltzfus
- 1 Load Driving Horses for Sam Esh Jr

PLUS MANY MORE HAND PICKED TOP QUALITY HORSES!!  
DON'T MISS THIS SALE!! IF YOU ARE IN NEED OF A HORSE, COME AND FIND THAT SPECIAL HORSE.

**MEL'S STABLE**  
OWNER - MEL HOOVER  
PHONE - HOME - 717-354-8397  
BARN - 717-354-6431  
AUCT. MEL HOOVER AU003111L  
NOT RESPONSIBLE FOR ACCIDENTS  
FOOD ON PREMISES

**Next Horse Sale: April 22, 2000**



**ATTENTION**  
Mare Owners of  
All Breeds



**STALLION PRESENTATION DAY**  
begins at 10:00 A.M. on  
**Saturday, April 8, 2000**  
at Mel's Stable

3 miles south of New Holland on Hill Rd.

Stallion owners must call  
to reserve a stall - Call 1-717-354-6431

For more information call:  
610-273-7540 • 610-273-3993

*If you have considered to raise a colt,  
come to Mel's Stable to pick the  
Stallion on April 8th!*

**THE NEXT PUBLIC AUCTION**

Will Be At  
**Lancaster, PA**

**DAY SALE**

**DAY SALE**

**THURSDAY, APRIL 6, 2000**  
11:00 A.M.

Phone 717-569-6800 - Dennis Kolb  
717-569-2106

Sale Manager: Dennis Kolb Pedigrees: Daniel Albright  
Auctioneer: Paul Snyder (AU-000873-L)

## PEG - LAND FARMS MILKING HERD & BRED HEIFER DISPERSAL W/EQUIP.

**Thursday, March 30, 2000 • 9:00 a.m.**  
**Bedford, PA**

Sale to be held at the farm located 6 miles off the PA Turnpike @ exit 11 (Bedford). From turnpike exit proceed south on old Rt. 220 to 1st light. Turn left on Sunnyside Rd. Proceed to Imlertown Rd. and bear left. Proceed on Imlertown Rd. 3.5 miles to farm. • Will be well marked!

**215 REG. & GRADE HOLSTEINS SELL 215**  
Freestall Housed - Parlor Milked  
182 Milking Age Females 35 Springing Heifers  
Predominantly A.I. Sired & Bred - No BST

**Expect to find strong - flat boned milk cows at this sale.**  
**This dairy represents many years of both environmental and genetic culling.**  
**Feet, legs & udders are exceptionally functional.**  
**Although well fed, the cows are not fed special.**

**Equipment**

Landy & Peg plan to do some crop farming w/their 2 sons, however, they have amassed a large inventory of equipment over the years. More than they need! Sample of items to sell:

<p><b>TRACTORS</b> Int. 1066 (exceptional) JD 2940 2WD Int. 806 diesel JD 720 diesel JD A 1952</p>	<p>Brilliant grass &amp; legume seeder NH 575 baler w/72 thrower NH 258 hay rake Int. 510 grain drill Stoltzfus lime/fert. spreader JD 45 loader</p>	<p>3-18' Pipe bale wagons Gravity &amp; forage wagons 20 poly dome calf hutches Girton 1500 gal. bulk tank 4,000 gal. s.s. storage tank 17' alum. dump body w/hoist</p>
--	--	---


**Terms:** Cash or good check. Out-of-state or checks unknown to sale manager must be accompanied by bank letter of credit.

**Owners: Landon & Peggy Henry**  
**Phone: (814) 623-8871**

**SALE MANAGED BY:**

Catalogs @ Ringside

H. Jamie Hammond  
AA: 002650-L



**Concord Ridge Sales**

Howard J. Hammond  
20281 Hammond Road,  
Corry, PA 16407  
814-664-8040 Fax: 814-665-2332

Cattle sleeved & vaccinated

E. Steven Denny  
AU: 002467-L

Sale sponsored by: MCC Relief Heifer Sale Committee,  
Wilmer Kraybill, Chairman, 610-286-9539

Lee Kurtz, Auctioneer AU-000522-L Dale L. Hoover, Pedigrees  
Omar Stoltzfus 717-867-2489

# DENNIS KOLB

LANCASTER, PA

**FRESH COWS/BRED HEIFERS  
GRADE & REGISTERED  
STOCK BULLS  
GOOD HERD AVAILABLE!**

**The Next Public Auction**

**DAY SALE**

**Will Be At  
Lancaster, PA**

**DAY SALE**

**THURSDAY, APRIL 6, 2000**  
11:00 A.M.

Phone 717-569-6800 - Dennis Kolb  
717-569-2106

Sale Manager: Dennis Kolb Pedigrees: Daniel Albright  
Auctioneer: Paul Snyder (AU-000873-L)

## MCC RELIEF HEIFER SALE

**MARCH 22, 2000 AT 12:00 NOON**  
**NEW HOLLAND SALES STABLES**

**30 Reg. and Grade Holsteins**  
2 Just Fresh 12 Bred 16 Open

Sires: Fred, Judge, Southwind, Airliner, Bench Eddie, Grandslam, Ingot, Mountain.

**Features Selling**

**Margene Blackstar Fred** from 3 generations VG dams. Dam over 20,000 as a 3 yr. old and the granddam 166,000 lifetime. Heifer sells fresh.

Also a **Judge** from a GP 84 Emory with 2-8 332 23410 3.9 909 3.3 768 Ready to breed. Jeanette Brooks, Parkesburg, PA 610-857-1320

**Southwind** from a Tesk with 4-1 365 35809 3.7 1314 3.1 1122. Heifer is due April to Thad. Dale & Dorothea Hostetter, Atglen, PA 610-593-7181

**Bench Eddie** born July '99 from a GP Ked Jurist with 2-3 283 18210 3.4 622 3.2 589. Calvin Blank, Cochranville, PA 610-593-6716

**Airliner** from a Mark Cinder with over 24,000. Next dam a VG Blackstar also over 24,000. Welsh Vue Farm, Gap, PA 717-768-3416

**Grandslam** from a promise with 5-10 303 30850 3.5 1081 2.9 900. Granddam over 32,000 with over 192,000 lifetime. Heifer is due Oct. to Adidas. Earl N. Landis, Manheim, PA 717-898-7028

Sale sponsored by: MCC Relief Heifer Sale Committee,  
Wilmer Kraybill, Chairman, 610-286-9539

Lee Kurtz, Auctioneer AU-000522-L Dale L. Hoover, Pedigrees  
Omar Stoltzfus 717-867-2489