

Public Auction Register

Closing Date Monday 5:00 P.M.
of each week's publication

MAY 2000

TUES MAY 2 - Fat Cattle Sale, Carlisle Livestock Market, Inc., 548 Alexander Spring Road, Carlisle, PA

TUES, MAY 2 - 7 45PM Feeder Cattle Sale Carlisle Livestock Market, Inc 548 Alexander Spring

Rd Carlisle, PA

WED, MAY 3 - 9AM Lumber & Building Supplies To be held at Wolgemuth Auction, 109N Maple Ave, Leola, Lanc Co., Pa 717-656-2947

WED, MAY 3 - 6 30PM Winross, Hess, Farm Trac & Toys To Be held at A&C Dffenbach Auction

Dairy and Livestock Sales

Inc, 100 W Jackson St, New Holland, Lanc Co., Pa 717-355-7253

THURS MAY 4 - 6PM 124 W Franklin St Ephrata, Real Estate Wm anty Estate Art Pennebecker Auction Service

THURS MAY 4 - 6 30PM Real estate at 900 E Kercher Ave, Myerstown, Pa By John and Judith Gehman Sylvan B Witmer, auct

FRI MAY 5 5PM & SAT MAY 6 - 8 30AM 5th Annual Steam-O-Rama Spring Consignment Auction For Info Charles Stlinger 717-755-8312 or Chuck Noonan 717-755-9465

SAT MAY 6 - 8AM Real estate, antiques & collectibles, household items, guns, etc Millersburg, Pa at 764 Union St Irene E & Lawrence C Latsha, owners

Dockey-Romberger & Deppen, aucts

SAT MAY 6 - 8 30AM - Horse 10AM Mel's Stables, 834 Wallace Rd, New Holland, PA Mel Hoover, Auctioneer

SAT MAY 6 - Cohocton (Steuben Co) NY Pirrung's Annual Farm Machinery Consignment Auction, Pirrung Aucts

SAT MAY 6 - Hoovers Annual Consignment Sale Near Blosserville, Cumb Co Farm equip, lawn & garden, collectibles, no household Ron Hoover 243-4993

SAT MAY 6 - 9AM Real estate, antiques, furniture, guns, riding mower At 640 Spruce Rd, New Holland, Pa By Lester M & Elva W Weaver Michale J Martin, auct

SAT MAY 6 - 9 30AM Annual Consignment Auction at Walnut

Barn Equip, Shade Mt Rental, 7 miles S of Mifflin Along Rt 35 Bryan D. Imes, auct

SAT MAY 6 - 10AM Heifer Sale New Holland Sales Stables, 101 W Fulton St, New Holland, Pa

SAT MAY 6 - 12PM 6 acre w/beautiful home, approx 10 miles W of State College Pa Centre Co Auct Ron J & Ron S Gilligan #AU-339-L & #AU3430-L 814-237-0189

TUES MAY 9 - 7 45PM Feeder Cattle Sale Westminster Livestock Auction

WED MAY 10 - 7 30PM Feeder Sale Four States Livestock, Hagerstown, Md

FRI, MAY 12 - 9AM Tractors, Farm Eq & Supplies To Be held at A&C Dffenbach Auction Inc, 100 W Jackson St, New Holland, Lanc Co., Pa 717-355-7253

PENNSYLVANIA ANGUS ON PARADE SALE

In Conjunction With The PENNSYLVANIA BEEF EXPO

Friday, March 31, 2000 3:00 p.m.

Ag Arena, Penn State University, State College, PA

Selling: 30 of Pennsylvania's finest females
20 1999 - born heifers - ideal show prospects
10 super bred heifers

Cattle from these leading herds: Consignors:

Andolina Angus Farm
Collingwood Angus
Cowden Locust Acres
Dunkard Valley Farm
ErReR Hill Farm
Hidden Lane Farm
JDH Cattle Company
Koolspring Farm
Krueger Family Angus
Penn State University
Rains Angus
Shultz Cattle Company
Seldom Seen Farm
Washington Farm
Weaverland Valley Farm
Work Land & Cattle Co.

John/Debra Andolina
David Collingwood
William Cowden
John Myers
Bob Hay
Richard Dennis
John/Jo Ann Hausner
Raymond Tait
Greg Krueger
Dr. John Comerford
Dale Rains
David/Julie Shultz
Clifford Teets
Michael/Ann Harrison
Larry/Barb Weaver
Robert C. Work

Eden, NY
Sellersville, PA
Burgettstown, PA
Dallastown, PA
Friedens, PA
Spring Grove, PA
Dover, PA
Mercer, PA
Coatesville, PA
University Park, PA
Mercer, PA
Dillsburg, PA
Freedom, PA
Woodbine, MD
New Holland, PA
Uniontown, PA

Featuring daughters of:

TC Stockman 365
Bushwacker
GAR Sleep Easy
JDH Keystone EXT
GAR Commitment
GAR Traveler 1027

GAR Precision 1680
Rito 9FB3
Rito 3B17 of OG10 Bando
Mr. Wix of McCumber 204
Sitz Traveler 8180

The Pennsylvania Beef Expo is always one of the highlights of the spring sale season. This offering has been selected and screened for quality pedigree, and ongoing breeding value. If you are searching for a great show prospect for 2000 or a power-packed bred female, this sale is a must!

For your free reference catalog, contact the office of the Sale Managers, TOM BURKE and KURT SCHAFF at the AMERICAN ANGUS HALL OF FAME, WORLD ANGUS HEADQUARTERS, Box 660, Smithville, MO 64089-0660, phone 816/532-0811, fax 816/532-0851, e-mail: angushal@swbell.net

Auctioneer: John Spiker

Sale Sponsored by the Pennsylvania Angus Association

President Harry Bachman 2051 Horseshoe Pk. Annville, PA 17003 717/867-1809	Vice-President Dale Rains 290 Drake Road Mercer, PA 16137 724/748-4117	Secretary Barb Weaver 641 Spruce Road New Holland, PA 17557 717/354-7477	Treasurer Brad Bishard RD 10, Box 247N York, PA 17404 717/792-9268
---	---	---	---

Look for features such as
Home on the Range,
You Ask, You Answer,
Cooks Question Corner,
and *Homestead Notes* in our
special *Farm and Home Section*
this week. In addition,
MailBox Markets
are also in the *Farm and Home*
Section. Do not miss it.

DELAWARE VALLEY COLLEGE GREEN & GOLD SPRING SPECTACULAR

Cow & Heifer Consignment Auction ~ Noon, April 1, 2000, Delaware Valley College Campus

Leduc Pick of Flush Sells!



Whittier-Farms Mandel Bev VG-88

2-00 305d 20,040m 3.0%F 3.5%P
Out of VG-87 pt. Skybuck
2nd Dam 90 pt. Valiant w/ 212,390 life
1999 Northern Tier Res. Champion
Delaware Valley College
(215) 489-2277

Comestar Lee Pick of Flush!



Fradon Stardust Malibu EX - 90

3-6 354d 28,063m 4.0%F 3.4%P
2nd Dam VG - 85 Warden
3rd Dam EX Triple Threat
Same Family as Browndale Manhattan
Richard & Debbie Norz
(908) 281-5465

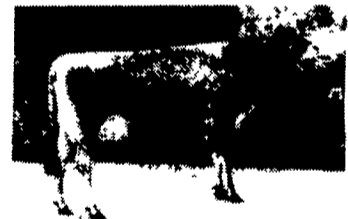
September Celsius Heifer!



Peticote Leadman Doll EX - 91

2-09 273d 24,792m 3.8%F 3.3%P
3-08 305d 26,559m 3.7%F 3.3%P
5-02 305d 24,891m 4.2%F 3.4%P
1995 PAADS 1st place 3 year old
Dr. William & Carolyn Pettit
(609) 859-2620

September Saturn Calf!



Springfield Dunker Lucky VG-88

September 1999 Saturn Calf
2nd Junior 3 year old at 1997
All-American Junior Show
1998 Champion at District II Jersey
Craig Walton & Curtis Reichard
(717) 243-8750

◆ **Peace and Plenty Farms** sends Windstar heifer out of 83 pt. dam with 4 generations of VG dams behind her!

◆ **Gerald & Linda Kisner** sends Durham bred heifer out of 85 pt. dam, 88 pt. 3rd dam, 88 pt. 4th dam w/ 243,609m lifetime.

◆ **Robert Munger** sends 3 Ricecrest Emerson embryos out of 84 pt. dam with +3404 milk, +87 Fat, and +108 Protein.

◆ **William, Paul, and Harry Smith** sends December Malachite heifer out of 87 pt. Blackstar dam, 87 pt. granddam.

◆ **Tucker Johnson** sends bred 85 pt. Jersey cow out of 1E dam with milk records of 302d, 17,974lbs.

◆ **Carrdale Holsteins** sends springing heifer out of 85 pt. dam, full sister to 2nd dam 2E-91 w/ 28,710m.

...and MANY MORE TOP-NOTCH QUALITY CONSIGNMENTS - 48 LOTS!!!!

Sale Managed By:

Delaware Valley College
Doylestown, PA
(570) 604-9053 (sale week only)

Sale Staff / Auctioneers:

The Cattle Exchange
David Rama
(607) 746-2226

Sale Co-Chairmen:

Bryan Champluvier, (215) 489-4497
Jarrod Burleigh, (215) 489-4470

For catalogs, please call
(215) 489-4405.



Routes 611 & 202 • Doylestown, PA • Bucks County