

Pa. Grain

March 13, 2000

Report supplied by PDA

COMPARED TO LAST MONDAY'S MARKET FOR EASTERN AND CENTRAL PENNSYLVANIA, CORN MOSTLY STEADY SOME SPOTS SHOWING STRENGTH, WHEAT MOSTLY STEADY SPOTS 02 HIGHER, BARLEY, OATS AND EAR CORN MOSTLY STEADY, SOYBEANS STEADY WITH A WEAK UNDERTONE PRICES PAID DELIVERED TO DEALERS DOCK ALL PRICES PER BUSHEL, EXCEPT EAR CORN PER TON

SOUTHEASTERN PENNSYLVANIA
CORN NO 2-Y RANGE 2 47-2 60, AVERAGE 2 54, CONTRACT FOR HARVEST 2 58-2 70, WHEAT NO 2 RANGE 2 40-2 60, AVERAGE 2 48, CONTRACT FOR HARVEST 2 52-2 71, BARLEY NO 3 RANGE 1 80-1 95, AVERAGE 1 60, CONTRACT FOR HARVEST 1 40, OATS NO 2 RANGE 1 40-1 80, AVERAGE 1 60, SOYBEANS RANGE 4 83-5 00, AVERAGE 4 94, CONTRACT FOR HARVEST, 4 98-5 12, FEW REPORTED GR SORGHUM RANGE 2 35, AVERAGE 2 35, EAR CORN RANGE 71 00-85 00, AVERAGE 78 57

SOUTH CENTRAL PENNSYLVANIA
CORN NO 2-Y RANGE 2 50-2 57, AVERAGE 2 50, WHEAT NO 2 RANGE 2 30-2 50, AVERAGE 2 37, BARLEY NO 3 RANGE 1 50-1 80, AVERAGE 1 62, OATS NO 2 RANGE 1 40-1 65, AVERAGE 1 55, SOYBEANS NO 1 RANGE 4 60-4 80, AVERAGE 4 67, EARCORN RANGE 74 00-85 00, AVERAGE 78 17

EASTERN AND CENTRAL PENNSYLVANIA SUMMARY
CORN NO 2-Y RANGE 2 44-2 60, AVERAGE 2 51, WHEAT NO 2 RANGE 2 30-2 60, AVERAGE 2 40, BARLEY NO 3 RANGE 1 60-1 95, AVERAGE 1 75, OATS NO 2 RANGE 1 40-1 65, AVERAGE 1 56, SOYBEANS NO 1 RANGE 4 60-5 00, AVERAGE 4 77, EAR CORN RANGE 70 00-85 00, AVERAGE 77 16

WESTERN PENNSYLVANIA
CORN NO 2 RANGE 2 20-2 50, AVERAGE 2 34, WHEAT NO 2 RANGE 2 40-2 50, AVERAGE 2 45, BARLEY NO 3 RANGE 1 75, AVERAGE 1 75, OATS NO 2 RANGE 1 40-1 65, AVERAGE 1 49, SOYBEANS NO 1 RANGE 4 75, AVERAGE 4 75, EARCORN RANGE 75 00 AVERAGE 75 00

CENTRAL PENNSYLVANIA
CORN NO 2 Y RANGE 2 40-2 55

AVERAGE 2 49, WHEAT NO 2 RANGE 2 10-2 30, AVERAGE 2 19, BARLEY NO 3 RANGE 1 70-1 85, AVERAGE 1 79, OATS NO 2 RANGE 1 45-1 60, AVERAGE 1 51, SOYBEANS 4 50-4 75, AVERAGE 4 63, EARCORN RANGE 70 00-80 00, AVERAGE 75 00

LEHIGH VALLEY AREA
CORN NO 2-Y RANGE 2 44-2 55, AVERAGE 2 50, WHEAT NO 2 RANGE 2 40-2 50, AVERAGE 2 45, BARLEY NO 3 RANGE 1 60-1 85, AVERAGE 1 72, OATS NO 2 RANGE 1 60-1 65, AVERAGE 1 63, SOYBEANS NO 1 RANGE 4 65-4 85, AVERAGE 4 75, PER HUNDREDWEIGHT FEW REPORTED GR SORGHUM RANGE 2 75-2 86, AVERAGE 2 81, EARCORN RANGE 72 00 75 00, AVERAGE 74 00

MONTH AGO
CORN NO 2-Y 2 53, WHEAT NO 2 2 51, BARLEY NO 3 1 74, OATS NO 2 1 56, SOYBEANS NO 1 4 83, EAR CORN 77 15

YEAR AGO
CORN NO 2-Y 2 40, WHEAT NO 2 2 63, BARLEY NO 3 1 63, OATS NO 2 1 48, SOYBEANS NO 1 4 48, EARCORN 69 04

NORTH CENTRAL OHIO (Prices FOB Truck)
CORN 2 06-2 09, WHEAT 1 98-2 16, OATS 1 50, SOYBEAN MEAL BULK 44% 159 70-166 00, BULK 48% 168 70-174 00

National Grain Market

St. Joseph, MO
Wed Mar 15, 2000

USDA-MO Dept Ag Market News Daily National Grain Market Summary Grain and soybean advances over the past two days were stopped as wet weather moved back into forecasts for the Midwest and southern Plains. Wheat steady to 3 cents lower. Corn 1 to 3 cents lower. Sorghum steady to 3 cents lower. Soybeans 5 to 8 cents lower. Wheat bids also declined on some export disappointments as Algeria rejected all of the soft wheat they had tendered for earlier due to high prices. However, there were some good orders overnight to South Korea and Egypt. The Plains areas is calling for a storm system with several areas forecast to receive several inches of snow. Moisture is forecast for the

Midwest tonight. Indications that producers could plant more corn this year but with fuel cost currently on the rise, nothing is definite. Some profit taking on the Board added pressure to soybean bids. Export sales have been slow for corn and beans this week.

EXPORT SALES: PURCHASER COMMODITY TONNAGE DELIVERY DATE South Korea Hard Red Winter Wheat 5,100 May/June DN Spring Wheat 2,300 Soft White Wheat 14,000 Egypt Hard Red Winter Wheat 85,000 Apr/May

Totals: Wheat 106,400 tonnes.
DATE CHANGE YEAR AGO TRUCK BIDS: 03/15/00 03/14/00 03/17/99 Wheat: Kansas City (HRW ORD) 2.70-2.72 Dn 2 2.89-2.92 Minneapolis (DNS 14pct) 3.46 1/4 Dn 3 3.61 1/4 Portland (SWW) 2.89-2.92 Up 1 3.23-3.24 St. Louis (SRW) 2.49-2.50 Unch 2.39-2.60

Com, US 2 Yellow: Kansas City 2.19-2.21 Dn 2 2.12-2.14 Minneapolis 2.08 Dn 3 2.09 3/4 So. Iowa 2.15-2.20 Dn 2 2.20-2.21 Omaha 2.07-2.10 Dn 1-2 2.02-2.03

Soybeans, US 1 Yellow: Kansas City 5.10-5.12 Dn 5 4.69 Minneapolis 4.94 Dn 6 4.59 1/4 So. Iowa 5.03-5.07 1/2 Dn 6-6 1/2 4.68-4.70 Cent. II Processors 5.10-5.19 Dn 8-5 4.73 1/4-4.80 1/4

Minneapolis truck wheat - to arrive 20 days

FUTURES: Kansas City (May) Wheat 2.97 1/4 Dn 1 3/4 3.07 1/4 Minneapolis (May) Wheat 3.26 1/4 Dn 3 3.55 1/4 Chicago (May) Wheat 2.68 3/4 Dn 2 1/4 2.77 3/4 Chicago (May) Com 2.36 Dn 2 2.25 Chicago (May) Soybeans 5.25 Dn 5 4.81 1/4

EXPORT BIDS: Barge or rail, Port of New Orleans or North Texas Gulf. Bids per bushel except sorghum per cwt. US 1 HRW Wheat, Ord Protein: 2.95 1/4-3.01

1/4 Dn 1 3/4-3/4 3.24 1/4-3.27 1/4 US 2 Soft Red Winter Wheat: 2.72 3/4-2.74 3/4 Dn 2 1/4 2.76 3/4-2.77 3/4 US 2 Yellow Com: 2.47-2.49 1/2 Dn 3-2 2.46 3/4-2.47 1/4 US 2 Yellow Sorghum: Rail 4.27-4.30 Dn 3-4 4.17-4.23 Barge 4.38-4.43 Dn 7-3 4.17-4.21 US 1 Yellow Soybeans: 5.40-5.45 Dn 7-5 5.00 1/4-5.01 1/4

Westminster Hay

Westminster, Maryland
Report Supplied by Auction

Tuesday, March 15, 2000

Hay—Straw—Grain

214 LOTS.
ALFALFA: 110.00-165.00, 1.60-3.90 BALE, 33.00 LARGE ROUND.
TIMOTHY: 125.00, 1.70-4.10 BALE, 25.00 LARGE ROUND.
CLOVER: 1.80-3.50 BALE.
GRASS: 1.00-3.50 BALE, 22.00-30.00 LARGE ROUND.
MULCH: .60-1.50 BALE.
STRAW: .70-2.10 BALE.
GROUND EAR CORN: 5.00-6.00 BAG.
LOCUST AND TREATED POSTS: 3.00-3.50 EACH.

Greencastle Livestock Hay

Greencastle, Pa.

Report Supplied By Auction

March 13, 2000

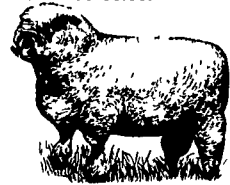
TOTAL LOTS: 41. 38 LOTS OF HAY.
ALFALFA: 80.00-156.00.
MIXED HAY: 71.00-162.00.
TIMOTHY: 95.00, 145.00, 170.00.
STRAW: 68.00, 75.00, 90.00.

Morrison's Cove Livestock

Martinsburg, Pa.

Report Supplied by Auction
Monday, March 13, 2000

CATTLE: 107 HEAD.
STEERS: CHOICE 68.00-72.60, GOOD 65.00-67.50.
HEIFERS: CHOICE 67.00-71.00, GOOD 56.00-63.00, UTILITY AND COMMERCIAL 37.00-43.75, CANNER AND LOW CUTTER 21.00-36.50.
BULLOCKS: 44.00-52.50.
BULLS: YG#1 44.50-49.00.
FEEDER CATTLE: STEERS 70.00-102.00, BULLS 66.00-100.00, HEIFERS 70.00-97.00.
CALVES: 87. PRIME, NO MARKET TEST; CHOICE 79.00-86.00; GOOD 69.00-77.00; STANDARD 20.00-44.00; HOLSTEIN BULLS 90-130 LBS. 50.00-115.00; HOLSTEIN HEIFERS 90-130 LBS. 130.00-230.00.
HOGS 218. US#1-2 41.00-42.50; US#1-3 39.00-40.00.
SOWS: US#1-3 26.00-39.00.
BOARS: 10.00-29.00.
FEEDER PIGS: 30. US#1-3 20-50 LBS. 10.00-24.00.
SHEEP: 15. CHOICE AND GOOD LAMBS, NO MKT. TEST, SL. EWES 38.00-48.00.
GOATS: 40.00-66.00.



Diffenbach Auction Inc.

100 West Jackson Street • New Holland, Pennsylvania 17557
Office: (717) 355-7253 • FAX: (717) 355-9547

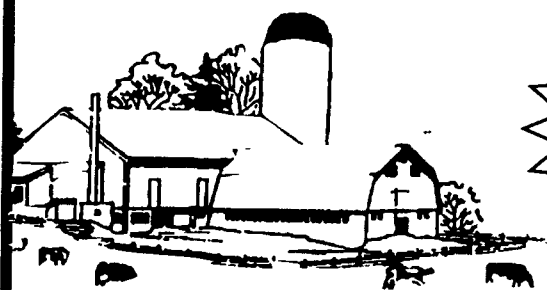
HAY & GRAIN SALE EVERY MONDAY - 10:00 A.M.

TUES	MAR 21	QUILT, CRAFT & BUGGY	9:00 A.M.
WED	MAR 22	QUILT & CRAFT	9:00 A.M.
WED	APR 5	WINROSS, HESS, FARM TRAC & TOYS	6:30 P.M.
FRI	APR 14	TRACTORS, FARM EQ., & SUPPLIES	9:00 A.M.

EQUIPPED FOR AN AUCTION AT YOUR PLACE OR OURS
ALAN DIFFENBACH AUCTION-AU2258-L

WHITEWASHING with ADVANTAGE FARM WHITE

- DRIES WHITE • NO WET FLOORS
- IS COMPATIBLE WITH DISINFECTANT AND FLY SPRAYS
- DOES NOT RUB OFF EASILY
- WASHES OFF WINDOWS & PIPELINES EASILY



10% CASH Discount through Month of March 2000 on Total Bill

BARN CLEANING SERVICE AVAILABLE WITH COMPRESSED AIR

To have your barn cleaned with air it will clean off dust, cob webs & lots of the old lime
This will keep your barn looking cleaner & whiter longer

CALL US ABOUT ON THE FARM FLY CONTROL

Serving Southeastern Pa. And More

BEITZEL'S SPRAYING

Witmer, PA 17585 717-392-7227 or
Toll Free 1-800-727-7228 7:00 AM to 5:00 PM
CERTIFIED COMMERCIAL APPLICATORS
LICENSED 37 YEARS EXPERIENCE INSURED

5 Trucks For Air Cleaning And Whitewashing

RADIO DISPATCHED TRUCKS

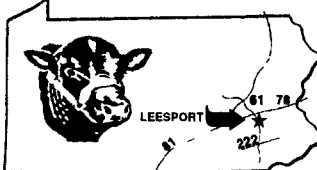
Barn Spraying Is Our Business, not a sideline.
Spraying Since 1961



LEESPORT, BERKS COUNTY, PA 19533 (610) 926-1307

LIVESTOCK AUCTION

EVERY WEDNESDAY - 1:00 P.M.



Farmers Market 9:00 AM to 8:00 PM
Flea Market 7:00 AM to ??

Serving Eastern Pennsylvania for 51 years.

NEW HOLLAND SALES STABLES INC. THE ACTION AUCTION

Livestock Is Our Only Business

MONDAY

SLAUGHTER HOGS EARLY BIRD HOG SALE 7:30 A.M.



See Your Hogs At New Holland Sales Stables Inc See them weighed, sold and pickup your check

10:00 A.M. HORSES MULES



9:00 A.M. SHEEP, GOATS & CALVES



1:30 P.M. BEEF SALE

THURSDAY

BEEF AUCTION 10:00 A.M.



BULLS, STEERS, BEEF COWS

1:00 P.M. STOCKERS & FEEDERS



10:00 A.M. GOATS, SHEEP CALVES



WEDNESDAY

HEIFER SALE 10:00 A.M. COW SALE 12:00 NOON

HEIFERS BULLS



DAIRY COWS

We have the usual run of 50 to 100 Heifers all ages Loads of fresh cows and springers from our regular shippers Also some local fresh cows and springers

1:30 P.M. FEEDER PIG SALE



Pigs are accepted after 6:30 A.M. State graded from 8 to 12 Dairy Barn and Feeder Pig Barn are cleaned and disinfected weekly for your protection

NEW HOLLAND SALES STABLES, INC. 12 Miles East of Lancaster Off Route 23, New Holland, Penna.

MANAGERS

Norman & David Kolb- 717-397-5538
Sale Barn Office Manager:
Roger Floyd- 717-354-4341
FAX #717-355-0706
Order Buyer:
Paul Good - 215-445-6662

Field Representatives For Beef and Feeders:

Luke Eberly - 610-267-6608, 717-738-1865
Homer Eberly - 610-267-3047
Nevin Martin - 717-354-7186
Ron Ranck - 717-656-9849

Field Representatives For Goats, Sheep & Calves:

Ken Smoker - 610-593-2123