

**NE Chicken Parts 1&2**  
ATLANTA, GA.  
MARCH 15, 2000

**NORTHEAST BROILER/FRYER PARTS - PART I FEDERAL-STATE**

Trucklot buying activity was typically quiet for midweek. Wings were about adequate. The balance of items was adequate to fully adequate and dark meat remained in the most available positions. Retail and distributive movement continued fair at best. The market tone was steady with much caution noted.

PRICES PAID PER POUND, ICE PACKED BROILER/FRYER PARTS, DELIVERED TO FIRST RECEIVERS IN POOL TRUCKLOT AND TRUCKLOT QUANTITIES.

**ITEM CURRENT NEGOTIATED TRADING\***

BREAST - B/S 135-140 TENDERLOINS 125 BREAST - WITH RIBS 64-65 BREAST - LINE RUN 64 LEGS 26-27 LEG QUARTERS (BULK) 16-17 DRUMSTICKS 35-36 THIGHS 21-22 B/S THIGHS 70-71 WINGS (WHOLE) 50-51 BACKS AND NECKS (STRIPPED) 10-12 LIVERS (5 POUND TUBS) 30-35 GIZZARDS (HEARTS) 55-60

INCLUDES NEW YORK CITY METROPOLITAN AREA, NORTHERN NEW JERSEY, MASSACHUSETTS, CONNECTICUT, RHODE ISLAND, AND PENNSYLVANIA (NORTHEAST OF HARRISBURG).

HARRISBURG). \* TODAY'S NEGOTIATED SALES AS OF 11:30 A.M.

**ATLANTA, GA.**  
MARCH 15, 2000

**NORTHEAST BROILER/FRYER PARTS - PART II FEDERAL-STATE PRICES PAID PER POUND, ICE PACKED BROILER/FRYER PARTS, DELIVERED TO FIRST RECEIVERS IN POOL TRUCKLOT AND TRUCKLOT QUANTITIES.**

CURRENT NEGOTIATED WTD VOLUME ITEM TRADING\* AVG\*\* /LBS

BREAST - B/S 135-140 141.73 326,360 TENDERLOINS 125 129.87 77,440 BREAST - WITH RIBS 64-65 72.36 196,920 BREAST - LINE RUN 64 68.71 126,400 LEGS 26-27 31.62 158,920 LEG QUARTERS (BULK) 16-17 18.37 242,160 DRUMSTICKS 35-36 32.31 108,100 THIGHS 21-22 30.05 59,700 B/S THIGHS 70-71 74.32 54,560 WINGS (WHOLE) 50-51 59.13 169,200 BACKS AND NECKS (STRIPPED) 10-12 12.12 53,880 LIVERS (5 POUND TUBS) 30-35 34.47 51,400 GIZZARDS (HEARTS) 55-60 59.32 68,120

INCLUDES NEW YORK CITY METROPOLITAN AREA, NORTHERN NEW JERSEY, MASSACHUSETTS, CONNECTICUT, RHODE ISLAND, AND PENNSYLVANIA (NORTHEAST OF HARRISBURG).

\* TODAY'S NEGOTIATED SALES

AS OF 11:30 A.M. \*\* WEIGHTED AVERAGE PRICE OF ALL GRADES AND BRANDS OF PRODUCT SHIPPED, OR TO BE SHIPPED AS OF 1:30 P.M. 15-MAR-2000.

**North Atlantic Eggs**

Atlanta, Georgia  
Report Supplied by USDA  
Thursday, March 16, 2000

PRICES WERE UNCHANGED TO 2 CENTS HIGHER IN PHILADELPHIA ON THE LARGER SIZES, UNCHANGED TO 1 CENT HIGHER FOR MEDIUMS. PRICES PAID TO PRODUCERS IN NEW ENGLAND WERE 2 CENTS HIGHER FOR JUMBOS, 1 CENT HIGHER FOR EXTRA LARGE AND LARGE, AND UNCHANGED ON THE REMAINDER OF THE SIZES. IN BOSTON, PRICES REMAINED UNCHANGED. THE MARKET TONE WAS STEADY TO FULLY STEADY. DEMAND RANGED FAIR TO MOSTLY MODERATE, WITH LIMITED FEATURE ACTIVITY ENHANCING MOVEMENT IN SOME AREAS. BREAKING STOCK OFFERINGS WERE USUALLY ADEQUATE FOR THE FAIR DEMAND. SPENT HEN AVAILABILITY WAS ADEQUATE FOR CURRENT NEEDS.

PHILADELPHIA: PRICES TO RETAILERS, SALES TO VOLUME BUYERS, USDA GRADE A AND GRADE A, WHITE EGGS IN CARTONS, DELIVERED TO STORE DOOR, CENTS PER DOZEN.

EXTRA LARGE .54-.60, LARGE .52-.58, MEDIUM .43-.44.

BOSTON: EXTRA LARGE .89-.91, LARGE .82-.84, MEDIUM .59-.61.

NEW ENGLAND: JUMBO 1.09-1.12, EXTRA LARGE .71-.74, LARGE .64-.67, MEDIUM .40-.43, SMALL .16-.19.

**Morrison's Cove Poultry & Rabbit**

Martinsburg, Pa.  
Report Supplied by Auction  
Monday, March 13, 2000

ROOSTERS 1.50-6.25.  
HEAVY HENS 1.25-3.00.  
BANTAMS 1.00-4.25.  
PIGEONS 1.75-3.00.  
DUCKS 4.00.  
MUSCOVY HENS 3.00-3.50.  
MUSCOVY DRAKES 2.50-4.00.  
BUNNIES 1.00-3.75.  
RABBITS 3.00-7.75.  
AUCTION EVERY MON., 7:30 P.M.

**Green Dragon Hay**

Ephrata, Pa.  
Report Supplied by Auction  
Friday, March 10, 2000  
Hay—Straw—Grain  
MIXED HAY: 27 LOTS, 75.00-190.00.  
ALFALFA: 16 LOTS, 65.00-190.00.  
TIMOTHY: 10 LOTS, 115.00-160.00.  
STRAW: 13 LOTS, 64.00-105.00.  
EAR CORN: 3 LOTS, 92.00, 98.00, 99.00.  
ORCHARDGRASS: 8 LOTS, 95.00-180.00.  
OATS: 2.00-2.35 BU.  
BALEAGE: 23.00, 26.00 AND 42.00 BALE.  
88 LOTS TOTAL.

**Middleburg Hay**

Middleburg, Pa.  
Report Supplied by Auction  
Tuesday, March 14, 2000  
HAY: 75 LOADS. TOTAL 110.  
ALFALFA: 14 LOTS, 65.00-150.00.  
MIXED HAY: 27 LOTS, 90.00-135.00.  
TIMOTHY: 11 LOTS, 100.00-142.50.  
ROUND BALES: 17 LOTS, 20.00-31.00.  
ORCHARDGRASS: 6 LOTS, 92.50-140.00.  
STRAW: 13 LOTS, 60.00-80.00.  
EAR CORN: 7 LOTS, 65.00-92.50.  
FIREWOOD: 20.00.  
OATS: 14 LOTS, 1.90-3.60 BU.

**Lebanon Produce Hay Auction**

Report Supplied by Auction  
Tuesday, March 14, 2000  
Hay—Straw—Grain  
ALFALFA: 95.00-117.50.  
ALFALFA MIX: 107.00.  
ORCHARDGRASS: 125.00-130.00.  
GRASSHAY: 110.00-127.50.  
MIXED HAY: 95.00-132.50.  
TIMOTHY GRASS MIX: 125.00.  
STRAW: 65.00-95.00, LARGE SQUARE BALES 30.00 BALE.  
EAR CORN: 92.50.  
HAY AND STRAW SALE TUES. 10 A.M.

**Morrison's Cove Livestock Hay**

Martinsburg, Pa.  
Report Supplied by Auction  
Monday, March 13, 2000  
Hay—Straw—Grain  
ALFALFA: 137.50-167.50.  
ALFALFA AND GRASS: 130.00-170.00.  
TIMOTHY: 92.50-130.00.  
MIXED HAY: 50.00-115.00.  
ROUND BALES: 70.00-135.00.  
STRAW: 97.50.  
FODDER: 77.50.  
REEDS CANARYGRASS: 140.00.  
WOOD: 15.00-40.00 LOAD.  
HAY AUCTION EVERY MON., 12:30 P.M.

**SPECIAL FEEDER SALE**  
**Mon., Mar. 20 @ 1 pm**  
Approx. 200 Head Consignments Welcome  
For Info  
**Vintage Sales Stables Inc.**  
Paradise, PA  
717-442-4181  
717-768-8204



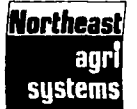
**Lebanon Produce AUCTION**  
**OPENING TUESDAY, APRIL 18**  
**Sale at 10:00 AM**  
Flowers  
Bedding Plants  
Early Produce  
717-949-2643



**Thanks and Congratulations to**

**Mac & Melody Curtis** Port Trevorton, PA  
On Their

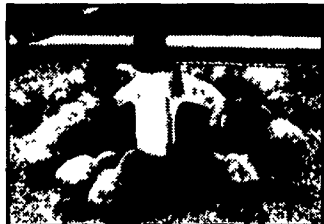
**2nd All New - 50'x615' Turkey House**



Quality Building and Equipment

**Featuring:**

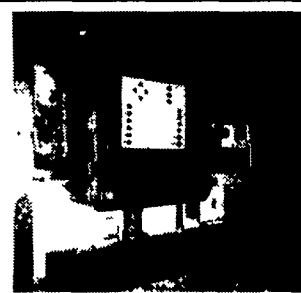
- CHORE-TIME Feeding Bins and Feeding**
- CHORE-TIME Ventilation Controls**
- Chore-Tronics™ The Simple Solution Automated Controls**
- Wheeling Painted Galvanized Steel Roofing and Siding**
- Panelized Building In Starter Pole Building In Finisher**



Chore-Time® H2 Turkey poult feeders

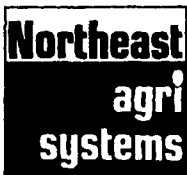


Chore-Tronics™ Controls give you the competitive edge. The Chore-Tronics™ Line of controls was developed specifically to meet today's management challenges. Improvements in individual systems, genetics, and nutrition still offer production advances, but these may not offer enough of an edge in today's competitive market. Properly integrated house management using Chore-Tronics Controls for the ultimate in flexibility and precision offers the greatest potential for a competitive advantage.



"Building and Equipment by Northeast Agri Systems"

Authorized **CHORE-TIME** master distributor since 1982



**Northeast Agri Systems, Inc.**

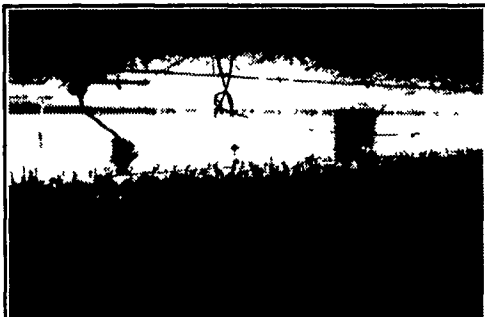
Flyway Business Park  
139A West Airport Road  
Litz, PA 17543  
1-800-673-2580  
Ph: (717) 569-2702

Delmarva Office  
305 University Ave.  
Federsburg, Md  
1-800-735-6361  
410-754-9434



CONTRACTS AVAILABLE  
For turkeys and broilers in the following counties:  
Perry Snyder  
Juniata Union  
Mifflin Montour  
Northumberland  
For more information call  
1-800-673-2580  
Ask for Jay Sensenig

**CHORE-TIME**  
Dedicated to PRODUCT LEADERSHIP™



Chore-Time® Adult Turkey Feeders with plastic feed pan.

Store Hours: Monday-Friday 7:30 am to 4:30 pm  
24 Hour-7 Day Repair Service

