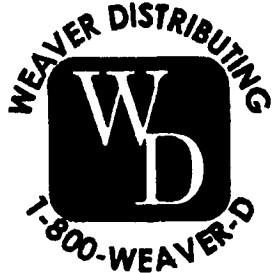


**35 TRUCKS AND TRAILERS**

Rockwell rears, 410 ratio on Peterbilt airleaf suspension, \$1,500. Sell as set. 717-721-9066.

24' Dump Trailer, 1964, Alum Parker, \$3,500 856-935-0348

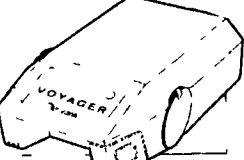
**Weaver Distributing Warehouse Direct To Your Door!**



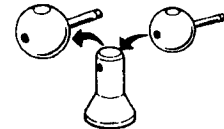
**Trailer Hitches Class 1 thru 5**



**Brake Controls \$59.95**

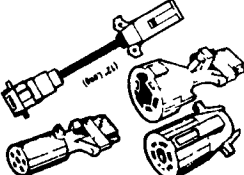


**Convert-A-Ball \$31.95**

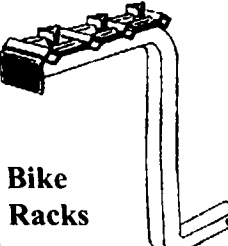
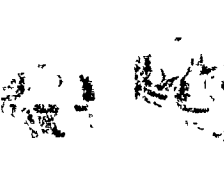


REMOVE BALL-REPLACE WITH DESIRED SIZE

**Elec. plugs and adapters**



**Pintle Hooks and Accessories**

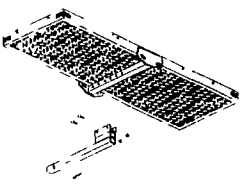


**Bike Racks**

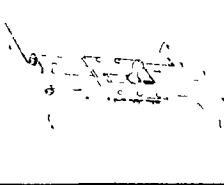
**Triple Tow Mounts Black or Chrome balls**



**Cargo Carrier \$89.99**

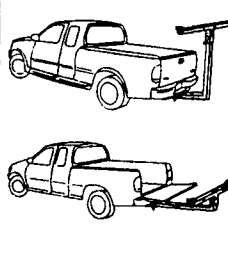


**Fold-down Gooseneck Hitch**



**Extend-A-Truck \$99.00**

**Pop-Up Gooseneck Hitch**



**LEED TRUCK CENTER**

402 South Chiques Rd Salunga Exit, Route 283 717-898-1200



1991 Ford Areomax, 300 Cat 9 Spd, P/S, A/C, A/B, 34,000 GVW, New 10'6" Theile Dump, Like New, Only \$22,900.



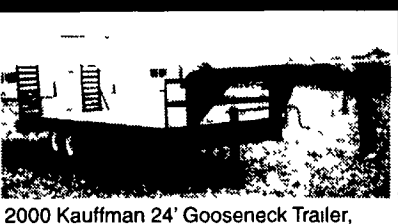
1987 IHC 1954, DT466, 5&2 Spd, P/S, A/B, 33,000 GVW, 24' Platform Body Insp. Very Clean, Only \$9,700.



1996 IHC 4900, DT 466, 210 HP, 6 Spd, P/S, A/B, A/C, 33,000 GVW, 26' Van with L/G, Super Clean, Only \$26,900.



1989 Ford F800, 7.8 Liter, 210 HP Diesel, 5 & 2 Spd, P/S, A/B, 33,000 GVW, 116" CA, Insp., Very Clean, Reduced to \$10,900.



2000 Kauffman 24' Gooseneck Trailer, 14,000 GVW \$3,750

New Kauffman 18' Tag-Along Trailer, 10,000 GVW, Flip-Up Ramp, 102" W \$2,850

1999 Hudson Landscape Trailer, Tandem Axle \$2,100

Int Single Axle Truck Tractor, Cummins Dsl, 290 HP, 9 Sp, Air Brakes \$5,000

**Weaver's Truck and Equipment Sale**

Milton, PA 570/523/9598

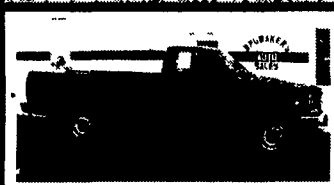


96 Freightliner FLD120, Glider, Cummins Power, 9-Spd, Spring Suspension, 140k Miles \$21,900



93 Chevy 3500 HD, 6.5 Dsl, Tow Truck, Hyd Wheel Lift \$16,900

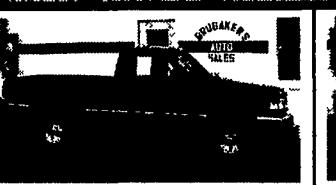
**BRIDGEMAN'S AUTO SALES**  
PH. 717-866-5237  
Route 422 MYERSBORO, PA



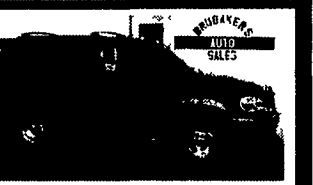
98 CHEVY 1500 W/T 4x4, Blue, 4.3 V6, 5 Sp, AM/FM/CAS, AC, 27,314 Mi \$15,900



98 DODGE DURANGO SLT, 4 Dr, 4x4, Black, 360 V8, AT, AC, PW, PL, CC, Tilt, AM/FM/CAS/CD, Pwr-Seat, Keyless-Entry, 49,685 Mi \$21,900



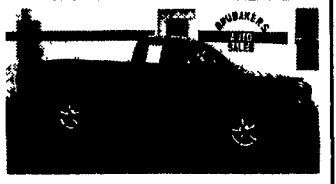
98 FORD RANGER XLT, 2WD, Green/Tan, 4 Cyl, 5 Sp, AM/FM/CAS, AC, 17,445 Mi \$9,800



97 FORD EXPLORER SPORT 4x4, Black, V6, 5 Sp, AM/FM/CAS, AC, PW, PL, CC, Tilt, 48,900 Mi \$14,900



97 FORD EXPEDITION XLT, 4x4, 9 Pass, Black, 5.4 V8, AT, AM/FM/CAS, PW, PL, CC, Dual-AC, Leather, CD-Changer, Keyless-Entry, Pwr-Seat, 74,335 Mi \$18,900



97 DODGE DAKOTA SPORT, 2WD, Red, V6, AT, AM/FM/CAS, AC, 49,935 Mi \$10,900



97 ISUZU RODEO 4x4, Green, V6, 5 Sp, AM/FM/CAS, AC, PW, PL, CC, Tilt, 61,235 Mi \$12,900



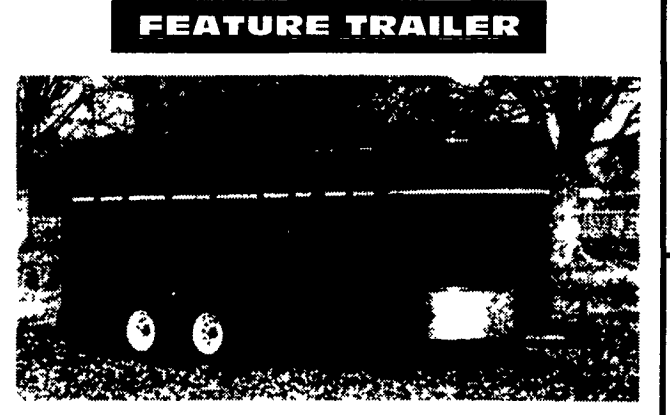
96 GMC SUBURBAN 2500 SLT, 4x4, 9/Pass, Green/Gray, 454 V8, AT, PW, PL, CC, Dual-AC, AM/FM/CAS/CD, Pwr-Seat, Keyless-Entry, Leather, 61,635 Mi. \$20,900

**HOSTETLER Truck Bodies & Trailers**  
717-667-3921  
Milroy Exit off Rt. 322 Between Lewistown & State College

Eby Aluminum Bumper Pull Livestock Trailer, Rubber Torsion Axles 1/2 Slider on Rear, Divider Gate, Escape Door, Spare Wheel & Tire, 6'8" Wide x 16' Long \$8,395

Tool Boxes, 36"x18"x18" \$162  
24"x18"x18" \$146 42"x18"x18" \$169  
30"x18"x18" \$155 48"x18"x18" \$178

Corn Pro Bumper Pull Livestock Trailer, Corn Pro, Rubber Torsion Axles, Treated Pine Floor  
6'x16 3500# Axles \$3,495  
6'8" Wide x 16 Long 3500#Axles \$3,725  
6'8" Wide x 16' Long 6000#Axles \$4,045



**CORN PRO 3 HORSE SLANT/COMBO TRAILER**

Torsion Axles, Dressing Room, 4 Saddle Racks, Halter Hooks, 7' High, 6' Wide, 18' Long, Rubber Bumper

**\$4,530**

Montz Slant Load Bumper Pull Livestock Trailers, Dressing Room, 7' High, Starting at  
2 Horse \$3,650  
3 Horse \$3,950

Montz Skid Loader Trailers, 82" Wide Between Fenders, Rubber Torsion Axles, Treated Pine Floor, 10,000# Drop Leg Jack, Spare Wheel & Tire, Adj Coupler, 10,000 GVW, Available in 7 Colors  
16' Long \$2,875  
18' Long \$3,030

Used 9' Eby Cattle Body Attic Over Cab, Rear Ramp Door and Roll Up Door, Slight Damage to Front Corner \$1,200

18' Deck Over Trailer, 16' Flat 2' Dovetail with 5' Ramps, 10,000 Lg GVW, Adj Coupler \$3,595

**Financing & Leasing Available**

Single and Dual Wheel Pick Up Flatbeds, Bulkhead, Outside Pockets, Rear Skirt, With or Without Gooseneck Compartments Starting at \$825

1991 Chevy 3500 Cab & Chassis, Long Wheel Base, 454 Gas, Auto Air, New Paint, High Miles, Good Cond \$6,250

New Design Montz Livestock Trailers Semi Round Front, New Sides and Rear  
6x16 7000# GVW \$3,575  
6'8" x 16' Long 7000# GVW \$3,775

Pace American Enclosed Trailers, Single & Tandem Axle, Side Doors, Double Rear Doors & Ramp Doors  
6'x12' 3000# GVW \$2,550  
8'x16' 7000# GVW \$4,250

Free shipping for most orders  
Call For a Free Catalog 1-800-932-8373  
1-800-WEAVER-D  
Weaver Distributing Rd 2 Box 470 Fredericksburg PA 17026

