

**WANTED**

Dodge 3500  
Cummins diesel  
w/Eby cattle body.  
**717-367-4629**

1985 IH series 1954, DT466, 5+2 spd, 26' van box, hyd brakes, 28,000GVW 250,000 Mi. \$8,500; 1976 C65 Chevy, 427, 5+2 spd, 24' flatbed, removeable stake body, air brakes, air ride seat, 30,000 GVW \$3,200 (570)966-1610

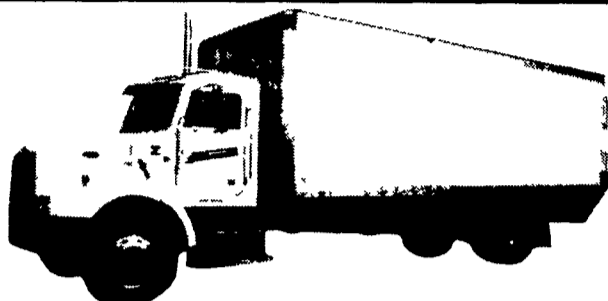
88 Frtl Conv Tractor, 60" Bunk, 95 Talbot Step Deck Trailer, Chain Binders. Call for Complete List \$20,000/obo. Will Seperate. 570-374-1608

1979 Mack triaxle w/21' Jiffy hyd boom for block, brick or stone. 717-432-3067.

**HUNTER KEYSTONE PETERBILT**



1467 Manheim Pike • Lancaster, PA 17604  
**717 299-6630 • 800 243-2458**

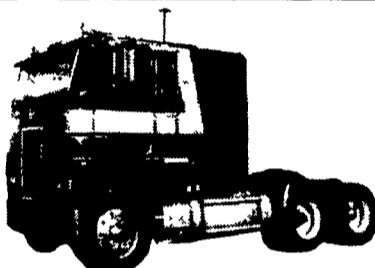


**1999 Peterbilt 330**, Cat 3126B, 300 HP Eng, 24' Morgan Van Body w/Lift Gate, 9 Speed, Air Susp, 33,000 GVW, 10,000#/23,000# Axles, Alum Wheels, Chrome Bumper, 50 Gal Alu Fuel Tank

**1993 Volvo WIA64TES**, Detroit S60 12 7L 430 HP Eng, 60' Sleeper, Jake Brake, 230" Wheel Base, 3 90 Ratio, Air Ride Susp, Alum Wheels



**1994 Peterbilt 378**, Cat 3406E, 355 HP, 36" Flat Top Sleeper, 10 Speed, Jake Brake, 4 11 Ratio, 206" Wheelbase, Low Air Leaf Susp, 11R 22 5 Tires, Wet Line (will remove air shield)



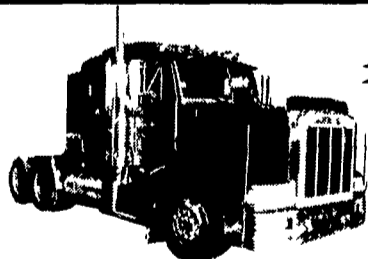
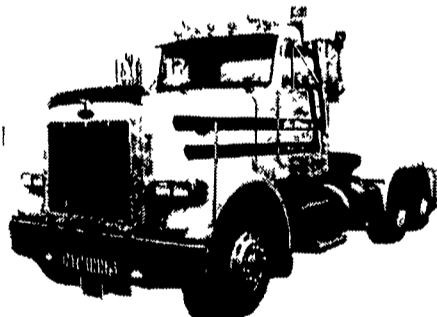
**1984 Peterbilt 362**, Cat 3406B, 370 HP, 9 Speed, Jake Brake, 3 55 Ratio, New PA Inspection

**DAY CABS!**

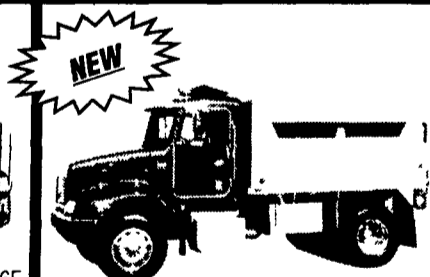
1 - 1995 } Peterbilt  
1 - 1997 } 378

**Cummins N14**

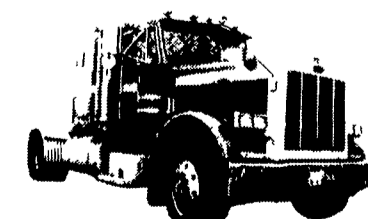
13 speed trans, Jake brake  
3 55 ratio, 190" w b,  
11/22 5 tires, air trac susp  
both under 200,000 miles  
**CALL FOR DETAILS**



**1994 Peterbilt 377**, 36" Sleeper, 3406E Cat, 410 HP, Jake Brake, 10 Speed, 4 11 Ratio, Alum Wheels, 200" Wheelbase, Low Air Susp, 625,000 Miles, Excellent Maintenance!



**Peterbilt 330**, 10' Dumps, Cat & Cum. Power, 9 Spd, 33,000 GVW, Locking Rear, Air Ride, 10 23 Axles



**1988 Peterbilt 379**, 36" Sleeper, 3406E Cat Eng, 435 HP, 220" Wheelbase, 13 Speed, Jake Brake, Air Ride, 608,000 Miles



**1988 Peterbilt 379**, 48" Sleeper, Cat 3406C, 425 HP Eng, 230" Wheelbase, Fuller 13 Speed, Jake Brake, 3 90 Ratio, Eaton Front 12K, Rears 40K, Air Susp, LP 24 5 Tires

Call for info on over 30 used trucks in stock!  
We can locate what you're looking for!

**FOR SALE - TRUCKS**



- 1 1989 L-10 International - 300 Cummins 9 spd, PS, AC, Jake brake, 150 kilo, heated mirrors, many extras, looks and runs like new, 140" CA **\$15,900**
  - 2 1987 L-10 International - same as above, no AC, 150" CA **\$14,900**
  - 3 1996 Chevy 1500 Silverado, 4x4, our service truck, like new **\$14,500**
  - 4 4-71 Detroit diesels, for sale **\$1,600 ea.**
- Phone 717-626-2680 • 717-626-8318**



**CLEAN, CLEAN, CLEAN**

International Grain Dump, 300 Cummins, Eaton Transmission & Rear 65,000 GVW, 20 Ft. Grain Bed, Shur Lock Tarp & Maryland Inspection. Bought This Truck On Washington Birthday 2000. Too Much Truck For My Operation.

**Must See To Appreciate  
Asking \$22,950**

**(301) 432-5568**

**CHEVROLET GEO BUICK Oldsmobile PONTIAC CHEVY TRUCKS**  
**OUTTEN**  
**TOTAL TRANSPORTATION CENTER**



**2000 CHEV 3500 CAB & CHASSIS**  
AT, A/C, 15,000 GVW STOCK \$33707

- also -

**2000 CHEV 2500 CAB & CHASSIS**  
AT, A/C, 8,600 GVW STOCK #33703



**1999 CHEV 3500 CREW CAB DUALY 4X4**

454 V8, CUSTOMIZED, AT, SILVERADO (MANY OPTIONS) WAS \$39,604, **NOW \$33,900**

**Outten Hamburg Rt. 61, Hamburg PA  
1-800-451-2333 • 610-562-2216**

**THE HONDRU EXPERIENCE**

OVER 200 TRUCKS AVAILABLE FROM OUR 4 DEALERSHIPS

**E-TOWN CHEVROLET**

Oldsmobile Pontiac  
Route 230 E-Town • 717-361-7776

**1999 CHEVY SUBURBAN**



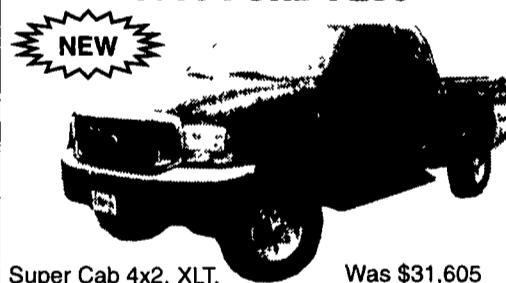
Auto, Leather, Equipped

- 98 Chevy K1500 4x4, 5 Speed, 6 Cyl
- 98 Chevy K1500, V8, PW&L, Auto, AC, Tilt, Cruise
- 97 Chevy S-10, Auto, AC, 6 Cyl
- 97 Pontiac Grand Am GT, Auto, AC, PW&L, T&C, 14,000 miles
- 96 Chevy Blazer LS, V-6, Auto, AC, PW&L, Tilt & Cruise
- 95 Chevy Blazer LT, V6, Auto, AC, PW&L, Tilt & Cruise

**PHILLIPS FORD**

Route 72 Manheim • 717-665-3551

**1999 FORD F250**



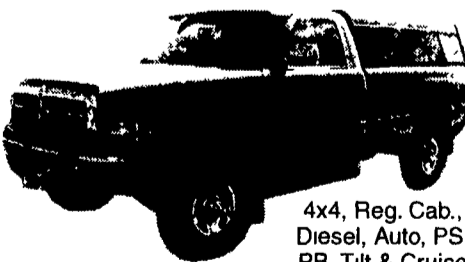
Super Cab 4x2, XLT, Diesel **Was \$31,605  
Now \$26,700**

- 98 Ford E350 15 Passenger XLT V10, 30K Miles
- 97 Honda Accord EX, 4 Dr Auto, Leather
- 97 Ford F250 XLT, 4x4, Super Cab, V-8, Auto, AC, PS, PB, 25,000 Miles
- (10) Used Explorers In Stock, 94-99 Model Years 2 & 4 Door Available
- 92 Ford LTD Cr Victoria, 90K Miles, Nice Shape

**E-TOWN DODGE**

Route 230 E-Town • 717-367-6644

**1995 DODGE 2500 SLT**



4x4, Reg. Cab., Diesel, Auto, PS, PB, Tilt & Cruise

- 00 Dodge Dakota Club Cab, 4x4, V8, Auto, PW&L, PS, PB, T&C
- 98 Dodge Ram 1500 SLT Long Bed, AC, Auto, V8, PW&L, Tilt Cruise
- 98 Dodge 1500 Club Cab, SLT, 4x4 Long Bed, Auto, AC, PW&L T&C
- 97 Dodge Dakota, V6, Auto, AC, PW&L, Tilt & Cruise
- 95 Dodge Dakota Club Cab, V8, Auto, AC, PW&L, Tilt & Cruise

All prices Include Rebates, Exclude Tax, Tag and \$40 Dock Fee

**MANHEIM CHRYSLER PLYMOUTH GMC**

Route 72 Manheim • 717-665-2473

**1999 DODGE DAKOTA SPORT 4x4, Equipped**



- 98 GMC Sierra Ext Cab, Auto, AC, PW&L, Cruise & Tilt
- 96 Mustang GT, Auto PS, PB, PW&L T&C AM-FM Cassette
- 96 Plymouth Voyager - Auto, PS, PB, AM-FM AC
- 96 GMC Sierra CC 4x4 Auto, AC PW&L Cruise & Tilt
- 94 Chevy Blazer 4x4 Diesel, Auto AC, PW&L, PS PB, T&C, AM/FM Cassette
- 88 Chevy Blazer, Auto, AC, PS, PB, PW&L & T&C

**LOADS OF USED PICKUPS  
CALL ANY STORE FOR DETAILS**

Email - hondruauto@aol.com

OVER 20 CHASSIS IMMEDIATELY AVAILABLE FOR BODY INSTALLATION  
AT OUR LOCAL BODY COMPANIES!