

35

**TRUCKS AND TRAILERS**

'99 Dodge 2500 8 pass., 318 auto, PS, PB, PW, PDL, cruise, tilt, dual air, AM-FM cassette, privacy glass, 19,000 miles w/ balance of factory warranty, dark green, \$19,900. 717-733-2873

'98 Chevy LS Express 2500 12 pass., extended, 350 auto, PS, PB, PW, PDL, cruise, tilt, dual air, AM-FM cassette, 42,000 miles, excellent condition, \$18,500. 717-733-2873

Int 1700, V8, 392 gas motor, new w/10,000 miles, air brakes, complete w/radiator & 5 speed trans. **\$600**

2 Speed Rear **\$150**

42 ft refrigerated trailers working units, good tires **\$2,750**

Some trailers for storage no units - prices start at **\$1,200**

13 1/2' steel dump body, heated floor, complete w/piston, pump & tank **\$1,500**

11 22 5 radials, 75% new, mounted, reg/hwy tread

**570-695-3332**

1985 Ford F350, 12' flat-bed, 6.9 dsl, 4 spd, dual wheels, avg cond, \$4,200. Call 717-266-9275.

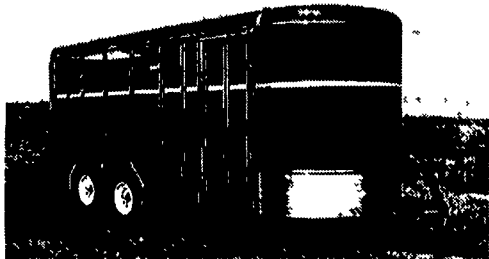
94 Ford F150 XL 2wd, 6 cyl., 5-spd, AC, vinyl seats, 69,000 mi, \$5900. 717/336-7375.

**NICARRY TRACTOR**

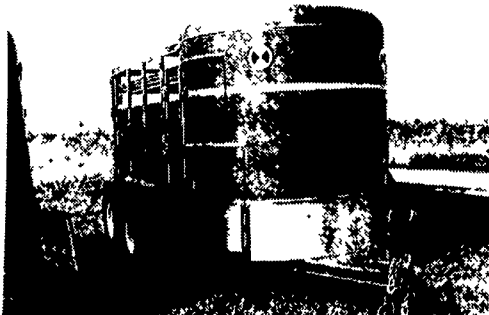
Rt. 22 West, Fredericksburg, PA  
**717-865-7575**

Authorized Dealer for

**CORN PRO TRAILERS**

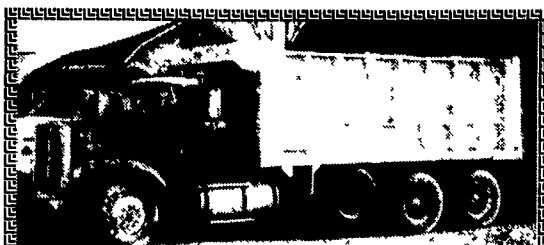


Corn Pro 3 Horse Slant, 18 ft, 7 ft. high, bumper pull trailer, tack room, 4-saddle rack & tack hooks, interior lights, tie hooks, charcoal color **\$4,595**



Corn Pro 2 Horse, 12 ft. combo trailer, manger & tack area, charcoal color **\$3,595**

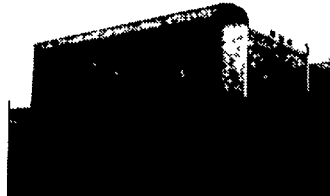
Several 16 ft. Trailers In Stock  
Assorted Colors & Options  
Flat Bed Trailers In Stock



1975 White - 18-1/2 Aluminum Bed, Tri-Axle  
**\$11,500**

Call 1-888-379-0175 (Ask for Tom)

**Used Truck Bodies**



Installed on NEW or Old Truck  
"Makes your Old Truck Look Like NEW!"  
• Dry Van Bodies 10' to 24' • Reefer Bodies  
• Flat Bodies

(Completely Refurbished Bodies in Most Cases)  
- Same Day Service!

Phone 717-898-0683

**CHARTER ENTERPRISES, LTD.**  
270 Hostetter Road, Manheim, Pa

**1974 IH 1800 Dump, 392 Engine**  
5+2 Rear, Some Rust, Cheap  
**\$1,500**



**1993 337 Pete Air Ride, 400 Cat, New Liners, 10 Speed, Cruise, Wetline For Dump or Walking Floor, Nice**  
**\$25,000**



**1992 377 Pete Air Ride 425 Cat, 150,000 on Overhaul, 9 Speed Wetline For Dump or Waking Floor**  
**\$23,000**



**1991 Volvo/White 435 Detroit, 15 Speed Air Ride, Wet Line For Walking Floor, Engine Needs Injection Liners, Walk In Sleeper, Cheap**  
**\$8,500**

**1994 Wilkens Walking Floor 7/32 Alum. Floor, Alum. Wheels, Shur Lock Tarp, Sliding Tandems, \$32,000 OBO**  
**717-653-9580**

**KELLER BROS.**

(Buffalo Springs) Lebanon, PA

**717-949-2000 or 1-800-363-2767**

**LEBANON COUNTY'S HEAVY DUTY TRUCK HQTRS.**

1999 F250's, 350's, XL, XLT & Duallys 4x4 & Gas or Turbo Diesels

**FORD FORD**  
**1994 FORD F150 SUPERCAB XLT**  
4x2, AT, V8, Loaded, Low Mileage



**1997 NISSAN QUEST XE**  
7-Passenger, All Power Options, 34,000 Miles, Spruce Green, Very Very Clean



**1998 DODGE RAM 1500 QUAD CAB**  
Laramie SLT, 4x4, At, A/C, Most Options



**1988 MERCURY GRAND MARQUIS GS**  
Loaded, Maroon, One Owner



**1995 CHEV 3500 4x4, Silverado, AT, Loaded, HD Suspension Pkg., One Owner - Just Traded**



**1995 FORD F150 Super Cab, Long Box, AT, V8, 4x4, Low Miles, XLT Trim**



**2000 F250, F350, F450, F650 & F 750's**



**1997 FORD F250 SUPERCAB 4x4 Diesel, AT, XLT Trim**



**FORD RANGERS 4x4 SUPER CABS**  
4 To Choose From  
1993 1997  
1994 1999



**XL, XLT's, Lariats, Single Axle, Duallys, Gas & Diesels, Super Cabs, Short & Long Beds, Cab & Chassis, 4x4, 4x2**  
**Hurry For Best Selection**  
**Only 15 11 Left**

**1999 FORD EXPEDITION XLT**  
V8, AT, A/C, PW, PL, 3<sup>rd</sup> Seat, One Owner, Only 14,000 Miles



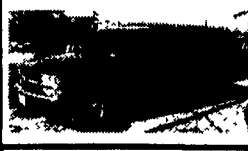
**1997 FORD F250 4X4 DIESEL**  
XLT, 5 Spd., 28,000 Miles, Very Clean, Black & Red



**1992 CHEV S10 EXTEND CAB**  
4x2, 6 Cyl., 5-Spd., Tahoe Pkg., Low, Low Miles, Just Traded



**1997 CHEV SUBURBAN LT**  
Leather, 4x4, 3rd Seat, CD Player, All Power Options, 1-Owner



**1995 CHEV S10 BLAZER LS**  
4.3 V6, AT, A/C, PW, PL, One Owner



**FORD EXPLORERS**  
8 To Choose From  
2 Door & 4 Door  
94 thru 97



**1994 JEEP CHEROKEE**  
4x4, 4 Dr., 4.0 6 Cyl., AT, AC, One Owner, Clean



**1997 FORD F250 XL 4X4**  
Diesel, Heavy Duty, DK Green, One Owner, Just Traded



**USED 1999 FORD F150 SUPER CAB**  
4x4, Lariat, Leather, AT, Every Option Avail., Save Thousands



**KELLER BROS. FORD HAS SERVED CENTRAL PENNA. AREA FOR MORE THAN 78 YEARS.**

**Woodcrest Motors**

SPECIALIZING IN TRUCKS & VANS

1200 North Reading Rd., (Rt. 272) Stevens, (Lancaster Co.) PA 17578  
**717-336-3130**



**92 CHEV 2500 UTILITY**  
V8, AT, A/C, Red, 55,000 Miles  
**\$9,500**



**98 GMC SIERRA 1500 SLE**  
Extend Cab, 4x4, 350 Vortec, 5-Spd., Most Options, 86,000 Miles. Dk. Red **\$17,300**



**94 FORD F150 XLT 4x4**  
V8, 5-Spd., Black, 57,000 Mi **\$11,900**



**96 DODGE DAKOTA CLUB CAB SLT**  
4x4, V6, AT, A/C, 81,000 Miles, Maroon  
**\$10,995**



**95 CHEVY 1500 EXT CAB 4x4**  
6.5 Diesel, 5 Spd., A/C, Lt Blue, 75,000 Miles



**92 CHEV 2500 UTILITY**  
V8, AT, A/C, White, 54,000 Miles **\$9,900**

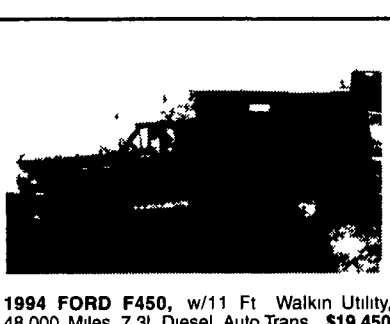
**BARKUS & SONS**

TRUCK CENTER, INC.

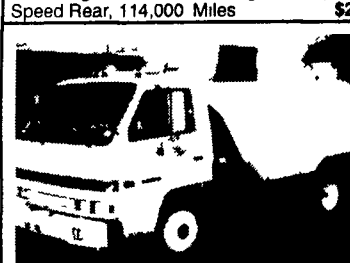
321 Maple Avenue, Horsham, PA 19044  
**215-674-2016 Fax: 215-674-2059**



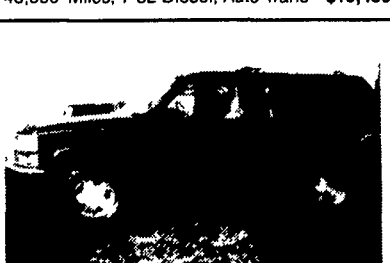
**1995 FORD F800, 12 Ft Aluminum Dump Body, w/90" High Sides, Diesel Engine, 5 Speed w/2 Speed Rear, 114,000 Miles**  
**\$27,900**



**1994 FORD F450, w/11 Ft Walkin Utility, 48,000 Miles, 7.3L Diesel, Auto Trans**  
**\$19,450**



**1992 ISUZU, w/Schwarzee Parking Lot Sweeper Diesel Auto Trans, Excellent Condition**  
**\$22,900**



**1996 CHEVY TAHOE, One Of A Kind, 4x4, Diesel Z21 Off Road Package, Bright Red, No Dreamers Please!**  
**\$20,900**