

# Best in the Country



**For rough duty, rougher weather:  
Rugged, practical, cost-efficient  
Channeledrain® roofing and siding.**

Channeledrain is the roofing and siding to use for a strong, tight structure that'll carry you through the years of heavy snows, driving rain, and ripping winds.

Wheeling Channeledrain is pure practicality: full-hard, high tensile steel; galvanized for toughness, durability, and rust resistance; with an exclusive drain channel for a snug, dry interior. Handsome appearance, too: bold shadow lines and a choice of rich, baked-on colors.

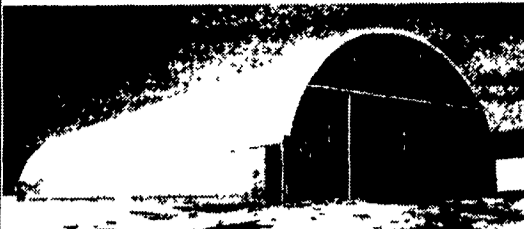
Wheeling roofing and siding is part of The System™, the most comprehensive, quality integrated manufacturing and paint finishing process in the industry. The best in the country is right here. Stop by.

**W&J**  
**WALTER & JACKSON, INC.**  
"Serving the Area's Building Needs Since 1872"

**CHRISTIANA** QUARRYVILLE  
44 E Gay Street (610) 593-5195 18 N Hess Street (717) 786-2171  
Open M-F 6:30am-5:00pm; Sat. 6:30am-12:00pm

FREE QUOTES WE DELIVER

## Alternative Building Systems



Single arch for smaller models or Truss frame up to 126' wide Pony wall or free standing or curtain style for livestock. Ridge vent available.

- Made of tough, durable fabric available in various weights
- 10-15 year pro-rated warranty on fabric
- U V I protected for extra long life
- Galvanized steel arches, 3 year limited warranty
- Can be set on 4' wall for hogs & sheep or 6' pony wall for cattle

A Shelter for all types of livestock, Dairy barns, Calf barns, Feed Storage & Farm equipment storage, Manure pits, Manure yards, Bunk silos, etc. Excellent warehousing for industry. Temporary Service Areas on Construction Sites.

**John Edward Weaver 570/672-2213**

**A & E ENTERPRISES, INC.**  
Specializing in Agricultural & Commercial Buildings

**STEEL BUILDINGS  
&  
POLE BARNs**

MATERIAL PACKAGES TO FULL CONSTRUCTION

**SPECIAL  
PRICING  
PACKAGES**

**FREE  
ESTIMATES!**

28 Evergreen Road Phone: (717) 274-3488  
Lebanon, PA 17042 Fax: (717) 274-3781



## POLE BUILDINGS

CUSTOM DESIGNED & ENGINEERED

- COMMERCIAL  AGRICULTURAL  RESIDENTIAL
- HORSE BARNs • ARENAS • GARAGES
- IMPLEMENT SHEDS



**BYLER  
CONSTRUCTION**  
Delbert Auken  
RR 1 Box 514A  
Womelsdorf, PA 19567

FREE ESTIMATES  
**610-589-2683**  
**FAX (610) 589-1492**

# Foremost Industries

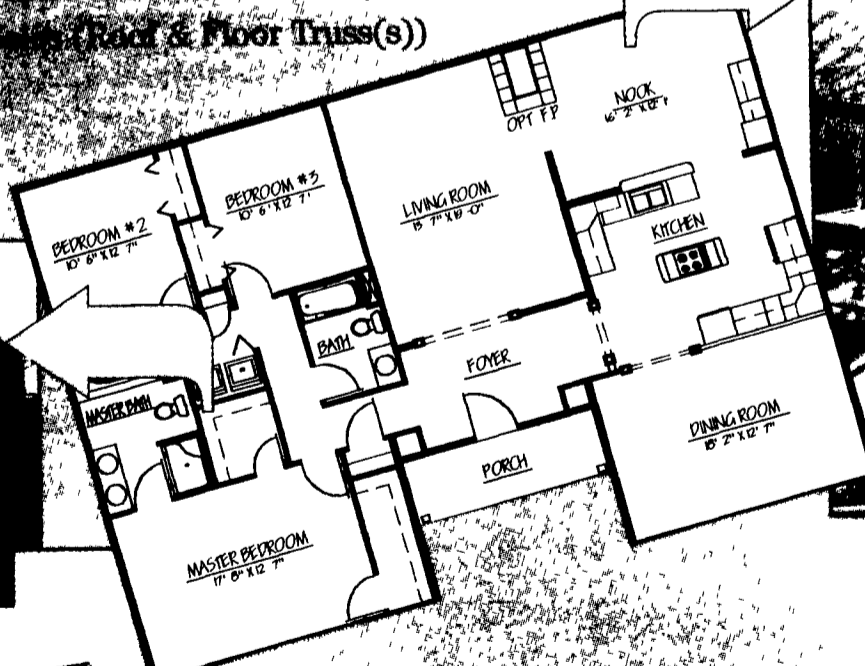
*Enjoying a Better Way to Build*

- Modular Homes • Panelized Homes
- Complete Shell • Roof & Floor Truss(s)

**FOREMOST  
BUILDING  
INNOVATIONS**



**Modular Homes  
Starting at \$47,500**



**Panelized Shell  
Framing Packages  
Starting at \$15,400**

Building has never been so easy & affordable for the Builder, Developer or Do-It-Yourselfer. Shell Framing Packages, Roof Truss(s), Engineered Wall Panels, Anderson Windows, Peachtree Doors, and Appalachian Mill Kitchen/Bath Cabinetry...

*Buy Your Building Components from a Manufacturer and Save*

**You Do Have A Choice**

**1-877-BUILD-IT**

Foremost Industries, Inc.  
2375 Buchanan Trail West  
Greencastle, PA  
717-597-7166

Exit 3 off I-81. Take Rt 16W for 2 miles.  
Foremost will be on your right.

We've built over 5000 Modular Homes, so you owe it to yourself to check us out. Visit our Model Home Village to see 7 beautifully decorated Model Homes, and pick up our "Collection of Home Plans."

**Modular Plans Built, Erected, &  
Finished the Foremost Way.**



**Foremost**  
For All Your Truss Needs