

Manheim, Lanc Co., Pa Full line of farm equip Bob-Manager 717-665-6684

Wyox, Pa Bradford Co., 1 ac corner lot, ex. location, Charus Goss Estate, Ronald Chaffe exec Shamrock Auction Service. SAT APR 8 - 1PM Real estate at 220 E Division Highway, Lititz.

Pa. Mark H. Horning Martins Auction Service SAT APR. 8 - 3PM Real estate auction Rt. 414, Powell Jim & Margaret Pnce, owners Shamrock Auct. Service

Public Auction Register

Closing Date Monday 5:00 P.M.

of each week's publication

Internet Sale Register will be updated

every Sat. at 2:23 P.M.

ATTENTION Auctioneers

All sales register info needs complete address, street, town, county & state.

SAT APR 8 Lawn & Garden Consignment Auction Held in Myerstown Pa Philip Hurst, auct

SAT APR 8 - Special Riding Horse Sale 8:30 Tack, 11 AM Horses Middleburg Livestock Auction Sales, Inc Middleburg, Pa

SAT APR 8 - 8:30 AM - Horse 10AM Stallion Presentation Day Mel's Stables, 834 Wallace Rd, New Holland, PA Mel Hoover, Auctioneer

SAT APR 8 - 9AM Henry & Carol Yeagley, 8565 Penns Valley Rd Centre Co Household items, Leon J & Arnes T Smith, aucts AU868L & AU2460L 813-348-8633

SAT APR 8 - 9AM Construction Tool Auction For John M &

Lydia Stoltzfus 3 miles S of Strasburg, Lanc Co., Pa Petersheim Auct Service

SAT APR 8 - 9AM Cedar Crest Electric, S 5th Ave, Lebaono, Pa Electrical Supplies Sylvia B Witmer & Dale Stauffer, auct

SAT APR 8 - 9AM Real Estate, pickup truck, auto, woodworking equip, household goods, antique furniture & collectibles 328 Berrysburg Rd, Upper Paxton Twp, Millersburg, Pa Estate of Marlin H Zimmerman David Deibler, Ed Shoop, aucts

SAT APR 8 - 9AM Spring Consignment Sale, Held at Juniata Markets, Juniata Co Pa Long's Auction Service

SAT APR 8 - 9AM Wolgemuth Annual Spring Consignment Auction located at 2101 Valley Road

SAT APR 8 - 9AM Consignment sale Rt 25 at Gratz Fairgrounds, Gratz Fire Co & Amish Schools Lawn & garden, crafts, farm machinery, lumber, sheds & Horses

SAT APR 8 - 9:30AM Mt Pleasant Mills, Juniata Co., PA Farm Equipment Tractors, Lawn & Garden Tractors Elwood Flowers, Owners Roger A Lauer, Auct 570-374-3793

SAT APR 8 - 9:30AM Farm machinery consignment sale Penns Valley Livestock Centre Hall Pa 814-349-5099

SAT APR 8 - 9AM Herman Dressler, Mt Pleasant Mills, Pa Great Country 3 bedroom home, tools, personal property Hasinger & Courtney, aucts

SAT APR 8 - 10AM Farm equip, Somerset Co., Pa Lowell Kurtz Family Luce Aucts

SAT APR 8 - 10AM 1st Annual Berks Co Parochial School Consignment Auction at Kutztown Produce Auction, Fleetwood, Pa Clarence N Shirk Auction Service 610-683-5093

SAT APR 8 - 10AM Real estate, on 1.3 acre lot, located 5678 Martindale Road, New Holland "Martindale" Pa Auction by Victoria S Fullz Aaron E Martin Auction Service

SAT APR 8 - 12 Noon commercial Property on golden mile,

AUCTION FRIDAY, MARCH 17, 2000 10:30 AM

Directions - Located on Rt. 551 - 5 miles North of Enon Valley or 5 miles South of Mt. Jackson, 4 miles from PA - Ohio line.

Tractors: Case-IH 7250 MFD w/1 yr. warranty; 7120 MFD, 5230 w/loader. Int. 1486, 1466, 2-1066, 826, 806, Farmall 450, Super C, Case 2390, 2290, White 2-155, JD 2955, MF 1085, 35, David Brown 990 w/loader; **Tractor Accessories:** Ft & rear wts, duals, toplinks; **JD Combines:** 4435 & 4400, **Tillage:** Krause 18' one-pass, 7-13 shank chisels, 4 & 5 btm ARS plows, discs, **Const:** Gehl 4610 skid steer, Case 580B Backhoe, Int. 250 w/trencher & 6-way blade; **Hay Equip:** Kneveland bale wrapper, Vermeer 605J R. Baler, NH 310 baler, 477 haybine, 256 rake, **Mowers:** Cub 154, Yanmar 19hp diesel; 3 pt. finish & rotary mowers, Yamaha golf carts, **4 Wheelers:** 2 Polaris 4x4 PLUS 2 Farmer Dispersals' **Small Ad but Large Sale - Call for More Info!**



Call for Reserves

Some larger items have reserves (prices are low enough for dealers)

Auctioneer:
Duke Whiting
AU-003437-L

SALE MANAGERS:
Doug & Karen Beatty
(724) 336-5368

PUBLIC SALE CONSTRUCTION EQUIPMENT

AUCTIONEERS: Terry L. Shetter AU-002951L
Kelly A. Shetter AA-002110
Ph: 717-264-3885

SATURDAY, MARCH 25, 2000

Beginning at 9:00 AM

26 Mowery Lane, Newburg, PA

Leaving Newburg, head towards turnpike interchange, turn right at Turkeyfoot (Rt. 997), go approx. 1 mile, sale on right or Exit 15 off PA turnpike, turn left on Rt. 997, go approx. 2-1/2 mile to Rt. 997 North. Sale on right.

CONCRETE EQUIP: Three 10'x6" Tapco alum brakes (like new), 17 sets Vanguard scaffolding, Vibra Strike concrete screeder w/Honda motor (like new), floats for Vibra Strike screeder (4/5/6/7/8/10/12'), 36" Bartell concrete trowler (like new), TS400 14" Stihl concrete saw, 12' concrete chute, concrete vibrator, 2 concrete groovers, 5' bullfloat, 6' concrete roller; mud mixer w/Honda motor, rebat bender (like new)

TRANSITS/TOOLS, EQUIP: Pro-shot laser transit for slopes or level (like new), David White transit (like new), Honda EW 140 welder generator (like new), Emglo air compressor, 20' alum scaffold plank (like new), 36' ext ladder, Bosch rotary hammer drill spline drive, 12" elec DeWalt sliding mitre saw (new), 12" air Dewalt sliding mitre saw (like new), 10" Hitachi sliding compound mitre saw, 150,000 BTU Ready Heater, thermostat for Ready Heater, drywall stilts, 22 Ramsel Remington, 2 Milwaukee elec drills, Milwaukee hand grinder, Porta-Cable router, DeWalt hand held elec planer (like new), nail gun, DeWalt impact wrench, two 500 watt elec lights, Hitachi SDS rotary hammer drill, drill bits, Milwaukee skill saw (like new), curb clips, Bostitch roofing nailer, 18 volt cordless drill, 6" elec bench grinder

SNOWBLOWER: Toro 34" walk-behind snowblower (like new)

FARM EQUIP: 1943 John Deere A on rubber (runs good), JD 336 hay baler w/kicker, JD disk, JD 8200 grain drill, hay rake, NH 469 haybine, H&S hay tedder, 2 wooden rack hay wagons, flat bed wagon, hay elevator, Athen 156 chisel plow, heavy duty spring wagon w/roof (like new)

MISC: Rubber tire Express Wagon, hot water boiler w/2 circulators, D&S wood & coal stove, 900' one inch black water pipe, wagon load of misc., a few windows & doors, assortment of older hand tools such as braces, bits, chisels, etc

NOTE: Cash or good check Sorry, not out-of-state checks Not responsible for accidents Lunch stand provided

OWNERS: Emanuel & Susan Stoltzfus

PUBLIC AUCTION CLEAN FARM MACHINERY TRACTORS - SKID LOADER - TRUCK JD DIESEL GATOR APPROX. 10 TON STRAW THURS., MARCH 16, 2000 11 A.M.

LOCATION: 520 W Lexington Rd, Lititz Rt 501 North to Lititz, turn left on Lincoln Ave, which becomes Doe Run Road, turn right at Erb's Mennonite Church onto W Lexington Rd to farm on right Penn Twp, Lanc Co

TRACTORS

Case IH 5200 FWD w/cab, A&H, Power Shift - like new - 1 owner, 6200 hrs.

John Deere 3010 diesel W.F.

IH 274 offset diesel w/cult. & woods belly mower - like new, 656 hrs.

Gehl 4625 diesel skid loader - 1 owner, 745 hrs.

3 Pt. Hitch attach. for Gehl skid loader w/PTO, pallet forks

John Deere Gator diesel 4 x 6 - 1 owner, 260 hrs.

FARM MACHINERY

IH 720 5B 18" Auto Reset Plow, Kewanee 18' Wing Disc, 13' Cultmulcher, PB Zimm 300 Gal Pull Type Field Sprayer w/35' Booms & Foamer, Gehl #235 Tandem Axle Manure Spreader w/Endgate - like new, N.H. #570 Baler w/thrower - like new, N H 30' Elevator, (2) Dutch Bros 18' Metal Bale Thrower Wagons w/Ext Tongs, N.H. 255 Rake/Tedder - like new, Univerth #275 Gravity Bin Wagon w/sides, Smaller Gravity Wagon, Gehl #125 Grinder/Mixer - like new, NI 325 2RN Compicker w/12 roll husking bed, Box Spreader Trailer, Oliver Side Rake, 10 ft Land Roller, 5 ft Mott Trailer Mower, 150 Gal Fuel Tank w/Pump, #147 Cub Cadet Lawn Tractor w/48" Deck, Hershey 2R Tob Planter w/new 300 PB Zimm Poly Tank, Ferg 2R Cult, 2 Double & 1 Single Tob Wagons, Steer Catch Chute w/Paul Livestock Scales, PB Zimm Gates & Hd Locks, New Line 225 Amp Welder, Hi-Pressure Steam Jenny 2,000 PSI & 50' & 100' hoses, Feed Racks & Trough, 300 Gal Fuel Tank & Pump, Bolt Bin & Bolts, Cutting Torch & Cart, Fuel Tank & Pump for pickup truck, plus other items

TRUCKS

'82 IH S 1954 Diesel DT 466 w/20' Grove roll back (V.G. Cond., 31600 GVW)

1944 IH KS5 Truck (engine runs good, no bed)

APPROX. 10 TON WHEAT STRAW

NOTE: Nice clean line of well-maintained machinery & tractors Very few small items Auction to begin w/sm items immediately followed by machinery & tractors Lunch available **TERMS:** Cash, PA Check or Bank Letter of Credit for this specific auction

Terms by
JOHN C. & ALTA W. NOLT
717-665-6499

Auction Conducted By
Randal V Kline, Lloyd Kreider
Roy Good, Jr., Auctioneers
Lic #499, #2116, #513
717-733-1006



FARM AUCTION

At the farm of Paul Roy and Richard Kemerer, R.D. #3, Latrobe, PA. (Westmoreland County). Just off Rt. 981, 3-1/2 mi. south of Route 30, Latrobe, PA. Watch for auction arrows.

SAT., MARCH 25, 2000

10:30 a.m.

(please be on time, no small items)

NICE FARM MACHINERY * DUMP TRUCK * CORN

JD 4430 diesel tractor, full cab; JD 6600 combine, hydrostatic, 404 cu. in. motor, 13' grain head & #444 four row low profile corn head; JD 430 round baler, adjusts from 4x4 to 4x6; JD 3950 forage harvester, 2 row corn & grass pickup; JD 7000 conservation 4 row corn planter; JD 8250 grain drill w/grass seeder; JD 1008 Bush Hog; JD 210 14' wheel disc; NH 452 skid steer loader w/2 buckets, 1284 hrs.; JD F-145 5 bottom semi-mount hillside plow; JD 1219 haybine; NI 324 two row corn picker wide row; JD 1610 chisel plow; Brillion S70-82 hydraulic life 20' wing harrow; Brillion 13' cultmulcher; NH 36' bale elevator; (2) McCurdy 230 gravity wagons w/8 ton running gear; hydraulic 6" auger to mount on gravity bin; Int. 440 baler w/thrower; (2) Bale King wagons; (2) H&S heavy duty 500 forage wagons w/roof, tandem axles & triple beaters; JD 700 grinder/mixer; Heidi trail sprayer, w/300 gal. tank, 36' boom; NH 520 double beater manure spreader; WIC 32' manure agitator; Int. 1300 7' 3 pt. sickle mower; Pequea p.t.o. tedder w/rubber teeth; WIC paper & straw chopper; Int. 600 silage blower; NH 256 rake w/dolly wheels & rubber teeth; Weaverline 430 hydrostatic silage cart w/4 augers, s.s. sides; Rissler TMR175 mixer; Easy Flow 3 pt. spin spreader; (2) 3 pt. bale carriers; 18.4x38 tires, wheels & hubs for JD tractor; approx. 1500 baskets ear corn; 1970 Ford F-600 dump truck w/12' grain bed; 1972 Chevy 1 ton flat bed farm truck.

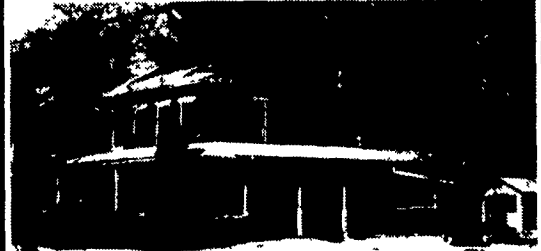
Terms: Cash. Lunch.

Paul Roy & Richard Kemerer
Owners
724-423-4491

L.H. KUZNIK & Associates, Auctioneers
#000524-L
724-423-4631

PUBLIC AUCTION VALUABLE REAL ESTATE 2 STY. BRICK HOME BARN/SHOP 3 ACRES (ZONED R2) LAMPETER AREA TUES., MAR. 28, 2000 4 PM

Loc: 951 Village Rd, Lampeter, PA From Bndgeport take Lampeter Rd to traffic light at Lampeter turn left onto Village Rd Or from Strasburg take Rt 741 West Approx 3 miles to property on right



RE Consists Of A Brick 2-1/2 Sty Dwl w/att summer house w/brick fp Lrg country kit, liv. rm, fam rm, laundry, bath, 3 Bdrms, full bsmt & attic storage Frame Barn w/horse stalls & att shop area 3 Acres tillable land Public water & sewer 10% Down, bal 60 days Open house Sat Mar 11, 18 & 25 from 1 to 4 pm or by appt 717-687-8350

TERMS BY
Auction Conducted By
Lloyd H Kreider,
Randal V Kline
Roy E Good, Jr., Auctioneers
Lic #513L, #499L, #2116L
717-872-5665 or 717-733-1006



PUBLIC AUCTION

Farm Equipment Truck
Sat., Mar. 25, 2000
at 9:30 AM

1 mile N. of New Tripoli, turn off Rt. 309 onto Mt. Rd E for 1.6 mile, turn R onto Hawk View Rd. to farm, Heidelberg Twp, Lehigh Co., PA

Tractors

Ford 7710 4x4 w/cab, radials, 2280 hrs; Ford 4610, radials, 2680 hrs; Int 656 Hydro wf, 3pt, radials; Int #2001 frt end loader w/manure fork, grd bucket & 6' sn bucket;

Tillage

Int 710 semi mtd 5-16" pl; Glenco 13'6" field culti w/buster bar; Ford 246 14' offset transport disc (new blades); Brillion 12' single r transp cultipacker; 15' s r transp cultipacker;

Grain

Case Int 5300 Soybean Special 20-6" disc w/grain & grass seed boxes; AC-F2 diesel combine w/cab; FKS 13' gr head; AC 430 c head; 13' flex head; gravity wagon w/8 ton gear; Westfield 46'8" transp PTO auger; Little Giant 36'6" transp auger; (3) asstd 3", 4" & 6" augers; wire drum gr cleaner; aerator;

Haying

NH 492 haybine (nice); NH 3 pt 451 7' mower; NH 30' b&c elev;

Trucks

1975 GMC 6000 26,000 lb. GVW, 16,500 miles on rebuilt eng w/midwest dump, rear hay ext & over cab hay platform;

Misc

Grove 12' two wh dump trl; 500 gal fuel tank w/Gasboy elec pump; 300 gal fuel tank; 7' & 9' sn blades, 3 pt or frt end loader hookups; Little Giant drag elev; 3 pt 4 r culti; 3 pt wood splitter; 30 ton shop press; frt end loader pallet fork; 225 AMP elec welder; Dole moisture tester; 200 gal poly tank; (10) 5 & 6000 series suitcase weights & 4 rear weights; 16-9x38" duals; 15-5x38" & 14-9x24" tire chns; scalding trough; poultry equip; slant lid feed chest; dried rough sawed lumber, boards, etc; 38' wdn ext ladder; platform scale; torpedo heaters; tow chns; 2" centrifugal pump; coated wire egg baskets; potato baskets; antique wdn water pump; Wonder Matic (thermostat fan) coal or wood furnace; 30 wdn pallets; sheep grooming equip & cattle clipper; lot of shop tools, wrenches, bolts, etc)

Note -- Equip looks nice

Terms --Cash or acceptable check Refreshments available

For
Kenneth & Margaret Bittner

Ralph W.
ZETTEMAYER AUCTION CO., Inc.
820 Nursery St. • Box 215 (610) 395-8084 Fax (610) 395-0227
Fogelsville, PA 18051-0215 "Proven Service Since 1955"
AU-001809-L