

**NE Chicken  
Parts 1&2  
ATLANTA, GA.  
MARCH 08, 2000**

CONNECTICUT, RHODE ISLAND, AND PENNSYLVANIA (NORTHEAST OF HARRISBURG). \* TODAY'S NEGOTIATED SALES AS OF 11:30 A.M.

\* TODAY'S NEGOTIATED SALES AS OF 11:30 A.M. \*\* WEIGHTED AVERAGE PRICE OF ALL GRADES AND BRANDS OF PRODUCT SHIPPED, OR TO BE SHIPPED AS OF 1:30 P.M. 08-MAR-2000.

**NORTHEAST BROILER/FRYER PARTS - PART I FEDERAL-STATE**  
Trucklot buying activity was light to no better than fair with best interest noted for wings. Offerings were usually tight to adequate on wings and adequate on the balance. Movement into retail and distributive outlets was about moderate to sometimes better where limited features were in progress. The market tone was fully steady to firm on wings and steady with caution noted on the remainder of parts.

**PRICES PAID PER POUND, ICE PACKED BROILER/FRYER PARTS, DELIVERED TO FIRST RECEIVERS IN POOL TRUCKLOT AND TRUCKLOT QUANTITIES.**

**ITEM CURRENT NEGOTIATED TRADING\***

BREAST - B/S 135 TENDERLOINS 120 BREAST - WITH RIBS 64-65 BREAST - LINE RUN 64 LEGS 26-27 LEG QUARTERS (BULK) 16-17 DRUMSTICKS 36-37 THIGHS 21-22 B/S THIGHS 70-71 WINGS (WHOLE) 46-47 BACKS AND NECKS (STRIPPED) 10-12

LIVERS (5 POUND TUBS) 30-35 GIZZARDS (HEARTS) 55-60

INCLUDES NEW YORK CITY METROPOLITAN AREA, NORTHERN NEW JERSEY, MASSACHUSETTS, CONNECTICUT, RHODE ISLAND, AND PENNSYLVANIA (NORTHEAST OF HARRISBURG).

**ATLANTA, GA.  
MARCH 08, 2000**

**NORTHEAST BROILER/FRYER PARTS - PART II FEDERAL-STATE PRICES PAID PER POUND, ICE PACKED BROILER/FRYER PARTS, DELIVERED TO FIRST RECEIVERS IN POOL TRUCKLOT AND TRUCKLOT QUANTITIES.**

**CURRENT NEGOTIATED WTD VOLUME ITEM TRADING\* AVG\*\* /LBS**

BREAST - B/S 135 141.65 299,240 TENDERLOINS 120 125.05 50,080 BREAST - WITH RIBS 64-65 72.59 180,160 BREAST - LINE RUN 64 68.24 162,600 LEGS 26-27 31.13 100,640 LEG QUARTERS (BULK) 16-17 18.86 353,339 DRUMSTICKS 36-37 32.83 84,060 THIGHS 21-22 29.15 57,660 B/S THIGHS 70-71 72.46 39,340 WINGS (WHOLE) 46-47 54.11 222,320 BACKS AND NECKS (STRIPPED) 10-12 12.13 52,160 LIVERS (5 POUND TUBS) 30-35 28.51 44,600 GIZZARDS (HEARTS) 55-60 59.19 47,960

INCLUDES NEW YORK CITY METROPOLITAN AREA, NORTHERN NEW JERSEY, MASSACHUSETTS, CONNECTICUT, RHODE ISLAND, AND PENNSYLVANIA (NORTHEAST OF HARRISBURG).

**Belleville Poultry  
Belleville, Pa.**

Report Supplied by Auction  
Wednesday, March 8, 2000

GEESE: 3.00-5.00 EA.  
TURKEYS: 13.00-16.00 EA.  
GUINEAS: 6.50 EA.  
ROOSTERS: 2.00-6.00 EA.  
BANTAMS: 2.00-4.00 EA.  
HEAVY HENS: 2.25-3.50 EA.  
SILKIES: 1.75-3.50 EA.  
MUSCOVY HENS: 2.75-4.00 EA.  
MUSCOVY DRAKES: 4.50-6.50 EA.  
MIXED DUCKS: 5.00 EA.  
BARN PIGEONS: 2.00 EA.  
WHITE BIRDS: 3.25 EA.  
FANCY BIRDS: NONE.  
PEACOCKS: NONE.  
PHEASANTS: 4.00-5.00 EA.  
DOVES: 3.50 EA.

QUAIL: 1.75 EA.  
GUINEA PIGS: 4.00 EA.  
RABBITS: UNDER 4 LBS. 1.50-6.00 EA., 4-6 LBS. 4.50-6.50 EA., OVER 6 LBS. 6.00-11.00 EA.  
EASTER BUNNY SALE APRIL 5, 1 P.M.  
FOR MORE INFORMATION  
PHONE 717-242-2898.

**Vintage Hay**

Paradise, Pa.

Report Supplied By Auction  
Thursday, March 9, 2000

Hay—Straw—Grain

ALFALFA: 108.00-156.00.  
TIMOTHY: 117.00-159.00.  
GRASS: 122.00-159.00.  
MIXED HAY: 107.00-139.00.  
STRAW: 107.00.  
SALE TIME 12 NOON.

**Middleburg Hay**

Middleburg, Pa.

Report Supplied by Auction  
Tuesday, March 7, 2000

HAY: 70 LOADS. TOTAL 111.  
ALFALFA: 16 LOTS, 80.00-147.50.  
MIXED HAY: 24 LOTS, 50.00-127.50.  
TIMOTHY: 16 LOTS, 50.00-175.00, 1.60 BALE.  
ROUND BALES: 6 LOTS, 29.00-33.00.  
ORCHARDGRASS: 7 LOTS, 55.00-127.50.  
STRAW: 18 LOTS, 55.00-80.00, .75 BALE.  
EAR CORN: 7 LOTS, 65.00-87.50.  
SHELLED CORN: 3 LOTS, 2.35-2.80.  
FIREWOOD: 60.00.  
OATS: 9 LOTS, 1.75-3.30 BU.  
BARLEY: 2.10.  
RED CLOVER: 62.50.

**FREE COMMODITY MARKET NEWSLETTER**

Whether your trade interests are grains or gold, Lehigh Valley Futures, Inc. has the knowledge and expertise to assist you in these markets. For a copy of our newsletter and/or a free trading kit, please contact:

**Lehigh Valley Futures, Inc.**

5000 Tilghman Street Suite 249  
Allentown, PA 18104

1-800-543-8939 or 1-610-366-7979 Fax 1-610-366-9842

lvfuture@microserve.net

The risk of loss in trading futures and options on futures can be substantial. Futures and options trading may not be suitable for everyone. You should carefully consider the risks in light of your financial condition in deciding whether to trade.

**TALK  
TO US  
BEFORE YOU  
BUY**



- Forages • Grain
- Complete Feeds

**WE HAVE PROGRAMS THAT WILL  
WORK FOR YOU!**



Check Out Our  
**ROUGHAGE EXTENDER**  
And  
**COMPLETE FEED**

**We Can Lock Your Price  
In For 3, 6, or 9 Month  
Give Us A Call:**

**HESSMILLS**



6 S Vintage Rd., Paradise, PA 17562  
(717) 442-4183 800-635-3592

**McElwee's Livestock**

**Home of Shippensburg Cownet  
3 Locations To Serve You**

**Newburg**

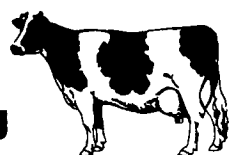
Mon. 9-4, Thurs. 9-2  
**(717) 423-6869**

**Woodsboro, MD**

Tues. 10-2  
**(301) 845-6232**

**Chambersburg**

Wed. 9-3  
**(717) 267-3321**



Receiving All Cows, Bulls, Steers, Calves  
Call For Daily Price Quotes

**YOUR INTERNET LINK TO HOOBER  
INCORPORATED - 24 HOURS A DAY**

[www.hooper.com](http://www.hooper.com)



**HOOBER**  
HOOBER, Inc.  
THREE LOCATION™

INTERCOURSE, PA 800 732-0017 MIDDLETOWN, DE 800 341-4028 McALISTERVILLE, PA 800 433-6679