

Estimated Daily Livestock Slaughter

Under Federal Inspection
Wednesday, March 8, 2000

	CATTLE	CALVES	HOGS	SHEEP
Wednesday 2000-02-09 (est)	126,000	6,000	375,000	15,000
Week ago (est)	130,000	5,000	376,000	14,000
Year ago (act)	126,000	5,000	381,000	16,000
Week to date (est)	369,000	16,000	1,123,000	45,000
Same Period Last Week (est)	364,000	15,000	1,127,000	43,000
Same Period Last Year (act)	378,000	14,000	1,076,000	45,000

Friend's Stockyard, Inc.

Accident, Md.

Report Supplied by Auction
Monday, March 6, 2000

STOCK STEERS AND BULLS 200-500 LBS. 50.00-100.00.

STOCK HEIFERS 36.00-89.00.

SLAUGHTER STEERS GOOD TO CHOICE 65.00-70.00, MEDIUM TO GOOD 52.00-63.50, HEAVY CHOICE OVER 1450 LBS. 50.00-62.00.

HOLSTEIN STEERS HEAVY CHOICE 40.00-58.00, LIGHT 35.00-46.50.

SLAUGHTER HEIFERS GOOD TO CHOICE 65.00-71.00, MEDIUM TO GOOD 45.00-64.00.

BULLS HEAVY 38.00-50.00, LIGHT 38.00-60.50.

COWS UTILITY (HOLSTEINS)

34.75-42.00, COMMERCIAL TO GOOD 30.00-35.50, CULL COWS 30.00 AND DOWN.

VEALS GOOD TO CHOICE 50.00-80.00, MEDIUM TO GOOD 20.00-47.00.

BOB CALVES 30.00 AND DOWN.

HOLSTEIN BULL CALVES RETURN TO FARM 90-120 LBS. UP TO 132.00.

HOLSTEIN HEIFER CALVES RETURN TO FARM 90-120 LBS. UP TO 275.00.

BEEF CROSS CALVES RETURN TO FARM UP TO 120.00.

HOGS, TOP QUALITY, UP TO 42.00.

SOWS UP TO 35.00.

LAMBS CHOICE UP TO 75.00.

LIVESTOCK PRICES ARE ALL GIVEN PER HUNDRED WEIGHT.

Lebanon Valley Livestock

Fredericksburg, Pa.

Report Supplied by Auction

Tuesday, March 7, 2000

STEERS: CHOICE 2-3 1450-1485 LBS. 68.00-69.75, SELECT 1-3 64.50-65.50, STANDARD 1-2 62.50.

HOLSTEIN STEERS: CHOICE 2-3 1545 LBS. 62.00, SELECT 1-2 57.25-58.00, STANDARD 1-2 54.00-55.00.

HEIFERS: CHOICE 2-4 1425 LBS. 67.50, HOLSTEINS SELECT 1-3 56.25, STANDARD 1-2 50.00-50.50.

COWS: BREAKERS 75-80% LEAN 39.00-40.75, ONE AT 46.00; BONERS 80-85% 37.75-38.75, LEAN 85-90% LEAN 36.00-37.50, SHELLS DOWN TO 25.00-35.50.

BULLS: YG#1 1555-2630 LBS. 48.75-52.75.

CALVES: GOOD 75-95 LBS. 88.00-96.00, STANDARD AND GOOD 85-90 LBS. 60.00-68.00, UTILITY 70-85 LBS. 25.00-35.00.

FARM CALVES: #1 95-115 LBS. 122.00-138.00, #2 95-115 LBS. 80.00-110.00.

HOLSTEIN HEIFERS: #1 100 LBS. 277.50-302.50, #2 90 LBS. 182.50-247.50.

BEEF TYPE BULLS AND HEIFERS

75-105 LBS. 80.00-98.00.

HOGS: 45-50% 241-250 LBS. 39.00-39.50.

SOWS: US#1-3 574 LBS. 37.00.

Special Monthly Greencastle Livestock Sale

Greencastle, Pa.

Report Supplied by Auction

Friday, March 3, 2000

STEERS: 200-300 LBS. 85.00-120.00, 300-500 LBS. 88.00-120.00, 500-700 LBS. 80.00-96.00, 700-900 LBS. 69.00-86.00, 900-1000 LBS. 60.00-66.00.

HOLSTEIN STEERS: 200-400 LBS. 65.00-82.00, 400-500 LBS. 62.00-73.50, 500-700 LBS. 57.00-67.00, 700-900 LBS. 56.00-66.00, 900-1000 LBS. 48.00-57.00.

HEIFERS: 200-300 LBS. 80.00-115.00, 300-500 LBS. 83.00-109.00, 500-700 LBS. 75.00-92.00, 700-900 LBS. 68.00-76.00, 900-1000 LBS. 58.00-67.00.

BULLS: 200-300 LBS. 85.00-115.00, 300-500 LBS. 85.00-114.00, 500-700 LBS. 72.00-92.00, 700-900 LBS. 62.00-70.00, 900-1000 LBS. 50.00-60.00.

HOLSTEIN BULLS: 500-900 LBS. 51.00-60.00.

New Holland Dairy

New Holland Sales Stables

Report Supplied by Auction

Wednesday, March 8, 2000

TOTAL HEADAGE: 213 DAIRY, 179 HEIFERS, 6 BULLS. MARKET STRONGER.

FEW LOCAL FRESH COWS 475.00-1500, 1675.00-2025.00.

LOCAL SPRINGERS 700.00-1225.00.

BETTER FRESH COWS 1650.00-2025.00.

LARGE HEIFERS 1225.00-1375.00, 1 AT 1450.00, SMALL 500.00-1125.00.

SHORTBRED HEIFERS 585.00-975.00, FEW 1150.00-1200.00.

OPEN BREEDING AGE HEIFERS 735.00-910.00.

BULLS 235.00-660.00, PUREBREDS 585.00-775.00.

HERD, ALLS STAGES 460.00-1400.00.

UPSTATE LOADS FRESH 875.00-1750.00.

CANADIAN LOADS FRESH 875.00-1825.00, SPRINGERS 1050.00-1425.00.

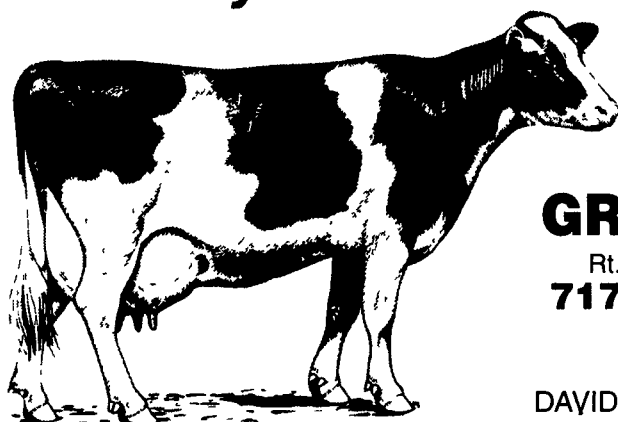
FRESH HEIFERS 375.00-1100.00, FEW 1350.00-1450.00.

SMALL OPEN HEIFERS 600.00-700.00, SMALLER 285.00-435.00.

Feed those grains for big savings.

**We will roast
on your farm.**

Those roasted
grains
are really tasty



SCHNUPP'S GRAIN ROASTING

Rt. 6 - Box 840, Lebanon, PA 17046

717-865-6611 Fax #865-7334

800-452-4004

- or -

DAVID N. GROFF, RD #3 Lewisburg, PA

570-568-1420

Attention Pennsylvania Farmers

Receive Crop Insurance Protection FREE (or better)

The Pennsylvania Department of Agriculture (PDA) will provide \$5.6 million for Crop Insurance Assistance grants to defray the cost of purchasing crop insurance in 2000 and 2001.

FREE

The PDA Crop Insurance Assistance Program will pay all crop insurance related fees making catastrophic (CAT) coverage FREE.

BETTER

Growers wishing to "buy-up" to higher coverage levels will receive a reduction in premium of up to 10% of the cost of the gross premium. This reduction is in ADDITION to the 25% subsidy Protection Bonus being provided by the USDA for emergency disaster assistance.

Application deadline is March 16.

Sign up today!

See your local Rain and Hail agent for additional details
To locate an agent near you, visit our website.
www.rainhail.com or call 1-800-776-4045

**Insure your crop with the Industry Leader -
Rain and Hail**



"The Crop Insurance Industry Leader"

**Got a big harvesting
season ahead
of you? CLAAS® has
the equipment!**



CLAAS understands the scope of your operation and what drives you. For your big silage, hay and straw needs we offer optimum-package, mid-sized big square balers for high-quality, highly compressed, nutrient-rich bales with excellent handling, storage and transport qualities. The **QUADRANT® 2200** produces bales 27" x 48" x up to 10' in length, and the **QUADRANT 1150** makes 20" x 32" x up to 7' bales. Add the **ROTO CUT®** cutting system to pre-process the bale. Our high-capacity twin rotary rakes adapt to uneven ground conditions and gives you one swath in a 22'4" working width or two swaths in a 24'7" working width. Full line of tedders is also available. Our 4-rotor model is North America's largest rotary rake



Rotary rakes



Tedders



ROTO CUT cutting system



Big square balers

Meeting all your harvesting needs!

**CLAAS
Country**

Contact your local CLAAS dealer today
for the harvesting machinery you need now.

Visit our internet site at www.claasofamerica.com
or e-mail us at claas@claasofamerica.com

PENNSYLVANIA:

Bedford:	Bence's Farm Equipment 116 Willow Brook Lane	814-623-8601
Greencastle:	Meyers Implements, Inc 400 North Antrim Way, P.O. Box 97	717-597-2176
Leola:	M.M. Weaver & Sons, Inc 169 North Groffdale Rd	717-656-2321
New Bethlehem:	Hettricks Farm Supply, Inc. Rt. 3, Box 177	814-275-3507
Newport:	Smith's Farm Equipment 30 Acker Road	717-567-3562
Sandy Lake:	Sandy Lake Implement Co., Inc. Rt. 173, 3675 Sandy Lake Rd.	724-376-2489
Williamsburg:	Longeneckers, Inc. Rd. 2, Box 121A-1	814-793-3731