

Four States Livestock

Hagerstown, Maryland
Report Supplied by Auction
Wednesday, March 8, 2000

SLAUGHTER COWS: 90 HEAD, 1.00-2.00 HIGHER. UTILITY 38.00-42.00, HIGH DRESSING 42.50-44.25, LIMOUSIN TO 46.50, CANNERS 34.00-39.00, SHELLY 33.50 DOWN.

BULLS: 4 HEAD. YG#1 1500-2150 LBS. 51.00-54.75, YG#2 1200-1400 LBS. 46.00-49.00.

FED STEERS: 39 HEAD, 2.00 HIGHER. HIGH CHOICE TO PRIME 1200-1500 LBS. 71.00-74.50, 1500-1600 LBS. 68.00-72.00, CHOICE -3 1200-1450 LBS. 68.00-71.00, LOW CHOICE 64.00-68.00.

FED HEIFERS: 10 HEAD. HIGH CHOICE 1100-1300 LBS. 67.75-69.50, CHOICE 1000-1100 LBS. 63.75-67.50.

VEAL CALVES: 104 HEAD. CULLS 85-110 LBS. 25.00-37.00, 60-80 LBS. 21.00-34.00.

FARM CALVES: HOLSTEIN BULLS 5.00-10.00 LOWER. #1 95-120 LBS. 110.00-125.00, FEW TO 135.00, 85-95 LBS. 65.00-90.00, #2 90-120 LBS. 70.00-105.00; HOLSTEIN HEIFERS #1 85-120 LBS. 225.00-270.00, BEEF X BULLS TO 105.00.

BUTCHER HOGS: 20 HEAD. #1 AND 2 230-260 LBS. 39.75-40.25, #1 AND 3 215-260 LBS. 36.75-38.00, 280-325 LBS. 36.00-38.00, #2 AND 3 300-425 LBS. TO 24.00.

SOWS: 33 HEAD. 350-490 LBS.

26.00-28.00, 2 AT 34.75, 500-600 LBS. 35.00-39.50, 600-700 LBS. 38.00-41.00, THIN AND ROUGH 400-600 LBS. 22.00-32.00.

STOCK CATTLE: 237 HEAD, STRONG DEMAND, RECORD PRICES. STEERS MED. AND LARGE FRAME 200-400 LBS. 91.00-121.00, 400-500 LBS. 87.00-108.00, 500-600 LBS. 80.00-97.00; 600-700 LBS. 70.00-84.00; 700-900 LBS. 64.00-75.00.

HEIFERS: MED. AND LARGE FRAME 200-400 LBS. 82.00-108.00, 400-500 LBS. 80.00-102.00; 9 HEAD 105.00-110.00, 500-600 LBS. 80.00-96.00, 600-700 LBS. 64.00-78.00, 700-800 LBS. 65.00-68.00.

BULLS: MED. AND LARGE FRAME 200-400 LBS. 93.00-115.00, 400-500 LBS. 84.00-102.00, 500-700 LBS. 75.00-86.00, 700-900 LBS. 57.00-62.00.

DAIRY REPLACEMENTS: 8 HEAD. LARGE SPRINGERS 1125.00-1210.00, 1 FRESH AT 835.00, LARGE OPEN HEIFERS 475.00-650.00.

SHEEP: 38.00-48.00, YEARLINGS 69.00-89.00.

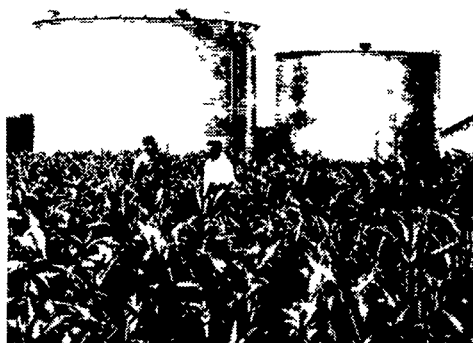
LAMBS: 90 LBS. TO 99.00; 1 135 LBS. AT 75.00.

GOATS: 2 LARGE 89.00 AND 99.00.

PIGS AND SHOATS: 84 HEAD, MAINLY CULLS BY THE HEAD FOR FEEDING, 14 HEAD 20-35 LBS. 14.00-18.00, 7 HEAD 40-50 LBS. 20.00-26.00; BY THE LB. #2 AND 3 100-180 LBS. 26.00-36.00.

EMHERR

EARLY ORDER PROGRAM NOW IN EFFECT

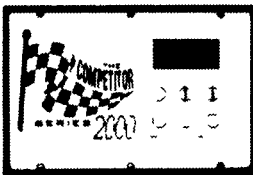
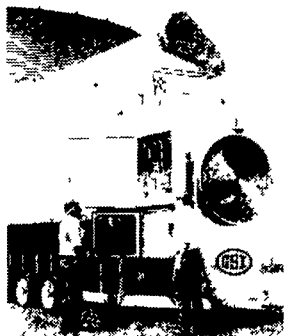


provides personal service to every customer. That keeps us one step ahead of the rest.

- Weight Tronix
- Bucket Elevators
- Feed Bins
- Air Drying Systems
- Feed Mill
- Stirring Systems
- Wet Tanks
- Grain Dryers
- Transport Augers
- Utility Augers
- Grain Bins
- Parts & Motors

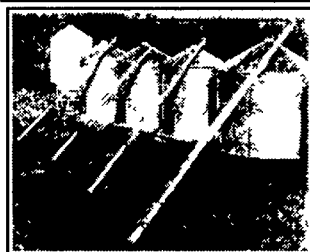
GSI AIRSTREAM

AUTOMATIC BATCH OR CONTINUOUS FLOW GRAIN DRYERS



The Competitive Edge
Smart system™ eliminates guesswork
Grain Dryer
On Display at Ag Progress

TREMENDOUS Early Order Savings on Grain Dryers



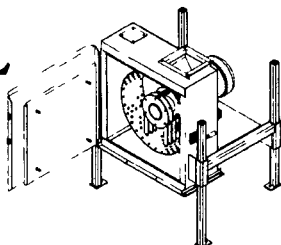
Westfield Grain Augers CLEARANCE SALE

Call For Best Price
8" & 10" Transport Augers (In Stock)

RAD MX 2000 HAMMER MILL

Excellent for Corn, High-Moisture Corn, Wheat, Barley
Up to 4,500 lbs./hr.

\$1,595



*Full Line Parts Dept. *
Sell, Service & Install

Approx. 5 mi. South of Lancaster on Rt. 272
14 Herrville Road
Willow Street, PA 17584
Ph. 717-464-3321 or Toll Free 800-732-0053
Mon.-Fri. 6:30 am to 8 pm
Sat. 7:30 am to 6 pm
Sun. Closed



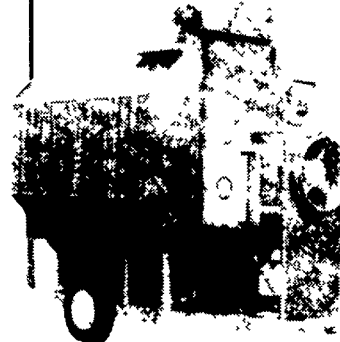
ACE Hardware

UPS Shipping Point
Not responsible for typographical errors

3/11



NOW! OPERATE CONTINUOUS FLOW OR AUTOMATIC BATCH WITH THE SAME DRYER!

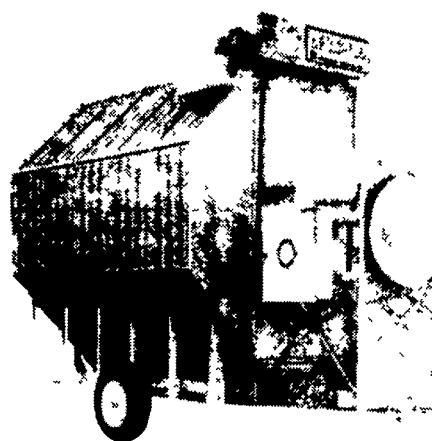


- Economically priced
- Fully automatic
- Outstanding efficiency
- High capacity

Here are the dryers for the farmer who has more to do at harvest time than just dry grain.

The new CF/AB Series from Farm Fans are designed to allow drying of either CONTINUOUS FLOW or AUTOMATIC BATCH models.

These dryers are specifically designed for full heat application for combination drying and dryeration. However, when operating AUTOMATIC BATCH, you can also select Dry and Cool application.



ASK US ABOUT...

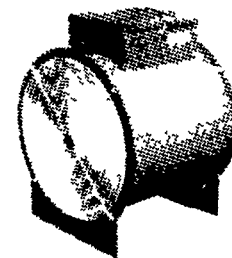
FARM FANS C-SERIES GRAIN DRYERS



C2160 shown

Only the Leader Delivers such Design Excellence

- Continuous flow full heat or dry and cool
- 2/3, 1/3 split plenum gives you the ability to maintain high capacity
- Capacities range from 300 up to 1,660 bph!
- Available with vane axial fans or centrifugal fans
- Low-profile design
- Fully automatic operation and safety controls



High Performance Axial Flow Aeration Fans
1/2 to 10 hp



FARM FANS, INC.
DIVISION OF **FFI** CORPORATION

Customer Appreciation Day

TAM Systems, Inc. cordially invites you to our annual Customer Appreciation Meeting. This year the meeting will be held on **Wednesday, March 22, 2000** with the location at: **Inn Dillsburg, US Rt. 15N, Dillsburg, PA**

Registration: 8:30 am
Time: 9:00 am till 2:00 pm (approximately)

Coffee/Donuts and Lunch will be provided.
RSVP needed by March 14, 2000

Topics to be covered:

- Grain Storage w/update on Government Grain Storage Program
- Grain Drying
- Aeration
- Farm Safety
- Questions and Answers

Guest Speakers:

- Steve Curtis - Farm Fans
- Tim Polley - Farm Fans
- Galen Julius - TAM Systems, Inc.
- Harmon Towne - Brock Grain



Phone (717) 432-9738
Fax (717) 432-8389
e-mail: hrife@tamsystemsinc.com

1248 South Mountain Road, Dillsburg, PA
GRAIN DRYING, STORAGE, AND PROCESSING THE AGRI INDUSTRY TRUSTS!