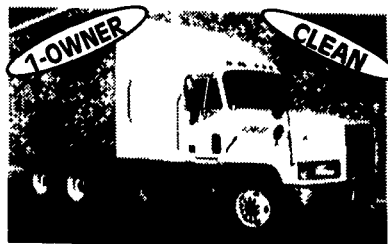


ALL STAR

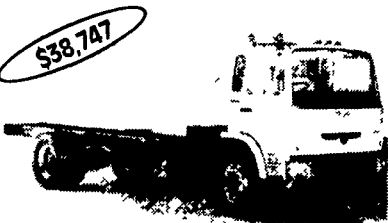
New & Used Trucks



2000 MACK CX SLEEPER & 2000 MACK CH DAY CB IN STOCK



(2) 2000 MACK RD688S E7-427 & E7-350, RTOF-14908LL, 18 Front, 44 Rear Axles, 265 inch W.B. (Can Change W.B)



2000 MACK MS250P Chassis, E3-190, 4106A-6 Spd., 12 Front, 21 Rear Axle, 217 W.B.



1999 MACK CL713 E7-460, 13 Spd., SS440, Spring Suspension, 17.5' Steel Dump Body

LESHER Mack

2700 Cumberland Sts. Lebanon, Pa. 17012 (Route 422 West)



SALES & SERVICE

717-273-4535

Providence

Chrysler
Plymouth
Dodge
Jeep



Part of the Lancaster County Motors Family of Dealerships

SPRING PRICE BREAK!
2000 DODGE
RAM 2500 SLT 4X4
Regular Cab, Meyers Angle Plow
MSRP \$32,965
PROVIDENCE DISC. \$3200
FACTORY REBATE \$1000
COMMERCIAL BONUS \$300
ON SALE! \$28,465

2000 DODGE
RAM 3500 SLT 4X4
Quad Cab, Cummins TurboDiesel,
Patriot Blue, tow pkg, block heater,
camper susp., cassette/CD, fog lamps,
sliding r. window
MSRP \$37,930
PROVIDENCE DISC. \$3700
FACTORY REBATE \$1000
COMMERCIAL BONUS \$300
ON SALE! \$32,930

2000 DODGE
RAM 2500 SLT 4X4
Regular Cab, 5.9 Cummins Turbodiesel,
towing package, camper special, 5 speed,
foglights, sliding rear window
MSRP \$32,365
PROVIDENCE DISC. \$2800
FACTORY REBATE \$1000
COMMERCIAL BONUS \$300
ON SALE! \$28,265

PRE-OWNED SPECIALS: 3/4-TON PICKUPS!
'97 DODGE RAM 2500 ST 4X4 Club Cab, 360 V8, auto, 47K mi, air, cass. WAS \$21,200 **NOW \$19,900**
'97 DODGE RAM 2500 SLT 4X4 Club Cab, 360 V8, auto, 31K, air, cassette PW, PL, cruise, Forest Green/Driftwood WAS \$25,250 **NOW \$23,950**

SALES HOURS: MON-FRI: 9AM-9PM
SATURDAY 9AM-4PM

CALL BRIAN OR BOB
NOW FOR YOUR
SERVICE APPOINTMENT!

LUBE, OIL & FILTER

\$22.95 Up to 5 qts. of Oil & Mopar Filter
Also includes complete underhood check of all belts, hoses, and fluid levels. Diesels extra.
Offer expires 3/31/00

ALIGNMENT SPECIAL

Any Chrysler, Plymouth, Dodge or Jeep
Car/Van 2 wheel.... **\$44.95**
Car/Van 4 wheel.... **\$49.95**
Any Dodge Truck.... **\$45.95**
Offer expires 3/31/00

TIRE ROTATION

\$24.95 Rotate & Balance Tires
Dual Wheels extra.
Offer expires 3/31/00

SERVICE HOURS: MON, WED, FRI: 7:30AM-5PM
TUES, THURS: 7:30AM-7PM

Call Toll-Free 877-288-9996 or Phone 284-9900

804 Lancaster Pike, Quarryville
Rt. 272, Just South of Lancaster
www.providenceautos.com e-mail: Vehicles@lancnews.infi.net

AL HAMILTON MANAGEMENT COMPANY

P.O. Box 157 • 55 Doe Run Road • Manheim, PA 17545
Phone: 717-665-7145 • Fax 717-665-2137

★★ "CLEANEST TRUCKS AROUND" ★★



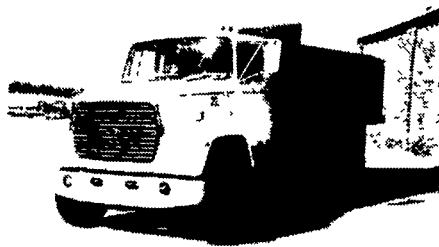
1975 Chevy 10' Dump
427 Gas, 5 Spd. Trans., 2 Spd. Rear,
Air Brakes, 29,500 GVW
\$6,500



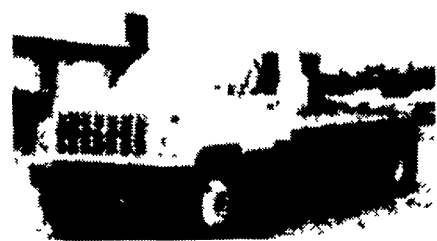
1990 Int. 4900 C&C
DT 466, 210 HP, 5 Spd. Trans., 2 Spd. Rear,
254 WB, 150 CA, A/C
\$19,500



1977 Ford LT 8000
15' Dump, 3208-T Cat 250 HP, 13 Spd.
Trans., 58,000 GVW
\$15,500



1986 Ford LN8000
16' Steel Dump, 3208 Cat, 210 HP, 5 Spd.
Trans., 2 Sp. Rear, Custom Int., Air Brakes,
33,000 GVW **\$21,500**



1992 GMC Topkick
3116 Cat Diesel, 6 Spd. Trans., PS,
Air Brakes, Lift Axle, 22' Flat Dump,
52,000 GVW, Low Miles - **\$28,500**



1985 Ford F-700
370 Gas, 5 Spd. Trans., 2 Spd. Rear, Hyd
Brakes, 21' Eby Cattle Body, Exc. Cond.
\$15,500



1994 Int. 4700 C&C
Low Profile, DT-408 190 Hrs. 6+1 Trans.,
Hyd. Brakes, 176 WB, 108 C.A., 25,500
GVW, A.C. **\$22,500**



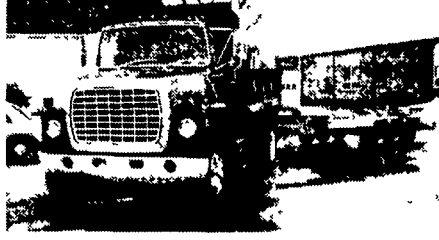
1995 Int. 4900 Tandem C&C
DT-466, 250 HP, 6+1 Trans., 224 WB,
156 CA, 58,000 GW, Low Miles, Exc Cond
\$39,500



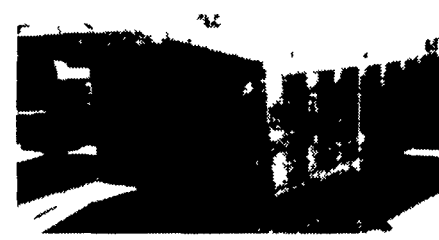
1994 Ford LNT9000
L-10 Cummins, 280 HP, 10 Spd Trans, PS,
Air Brakes, A/C, Custom Int., 260 WB,
192 CA, 56,000 GVW - **\$38,500**



1992 Ford LN8000
C&C 7.8 L Diesel, 210 HP, 6 Spd. Trans.,
Custom Int., 234" WB, 168" CA,
33,000 GVW - **\$19,500**



1979 Ford LN8000
w/11 Ton Eager Beaver Trl., 477 Gas, 5 Spd
Trans., 2 Spd. Rear, 35,000 GVW,
Combination **\$13,500** Or Will Separate



15' Dump Bed
New Floor & Sides, Complete w/Hoist,
Tank Hinges Pump
\$4,500



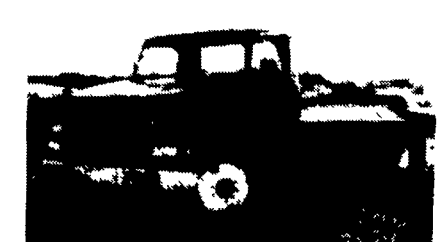
1995 Ford LN8000
8.3 Cummins, 210 Hp, 6 spd Trans, P.S., Air
Brakes, A/C, 35,000 GVW, New 11' Dump
\$35,500



1992 Int. 4700
C&C, DTA, 360, 170 HP, 6+1 Trans., Hyd
Brakes A/C, 176 W.B., 108 C.A., 26,000
GVW **\$15,500**



1995 Ford LN8000
C&C 8.3 Cummins, 210 HP, 6 Spd Trans,
Custom Int A/C, 260 W.B., 192 C A., 35,000
GVW **\$26,500**



1995 International 4700
DT466, 190 HP, 25,500 GVW, 236 W B.,
124 C A., Low Mileage, 6+1 Transmission,
AC, Custom Cab, Mint Condition - **\$25,500**