



1990 CHEVROLET KODIAK, Pipe Line Unit Heavy Duty Rear Winch Dump 454 Gas 5 & 2, 32,000 GVW Like New Stk #1189 **\$15,900**



1987 GMC CAB & CHASSIS, (24 Frame) 366 Gas 5 Speed Low Miles, 23,900 GVW Very Clean Stk #1282 **\$4,900**



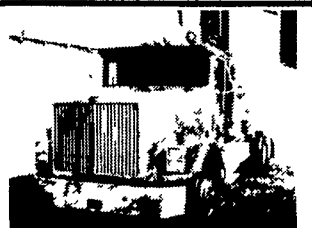
1986 FREIGHTLINER TT Day Cab 300 Cummins 9 Speed SQHD Rears 24/5 Budds New Paint Stk #1203 **\$8,900**



(3) 1993 MACK CH613 DAY CAB TT, EM7-300, 9 Speed DS402 Eatons on Spring Susp Very Low Mileage **\$22,900 EA.**



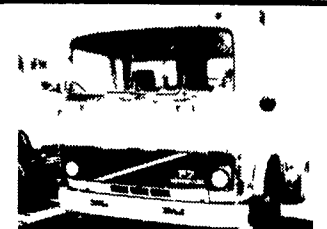
SPECIAL ON MACK E6-250 HP ENGINES!



1988 INTERNATIONAL TT, 9300 Series, Cummins BCIV RTO 14609 SQ100 Rears 350 HP 60 Sleeper Stk #1257 **\$9,500**



1990 CHEVROLET CUBE VAN, 350 Automatic, 11,000 GVW 14' Body Duals Stock #1192 **\$7,900**



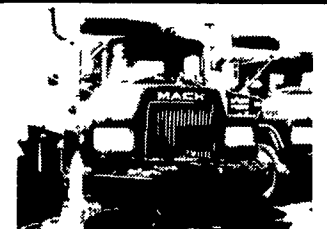
1984 VOLVO SA, TT, 6 Cyl Turbo Diesel 8 Speed, 20 Spokes, Good Runner, Stk #1200 **\$5,900**



1989 INTERNATIONAL 9300 TT w/SLEEPER, 400 Cummins w/Jake (Low Miles) 13 Spd 40M Rears on Air Ride, New Paint, Stk #1287 **\$12,900**



1986 CHEVROLET 70 SERIES w/24 Dry Van w/Lift Gate, 8 2 Detroit Diesel, Automatic 22.5 Radials on Spokes, 30,200 GVW Stk #1214 **\$6,900**



1978 MACK DM685ST Tri Axle 10Yd MIXER 237 Maxi, 6 Speed 44 Rears Lift Axle Well Maintained Stk #1233 **\$7,900**



1993 FREIGHTLINER TT, 350 Cat w/Jake RTX14708LL Eaton Rears on Air Ride 48' Sleeper, Wet Line Stk #1163 **\$17,900**

FIRESTONE MOTORS, INC.

330 S. THIRD ST. • LEMOYNE, PA 17043 • (717) 763-7721 • TOLL FREE 1-888-668-6778

Introducing...

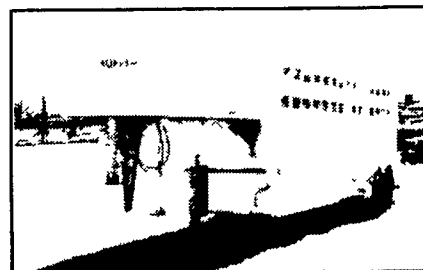
CHEROKEE TRAILERS

All Aluminum Stock Trailers

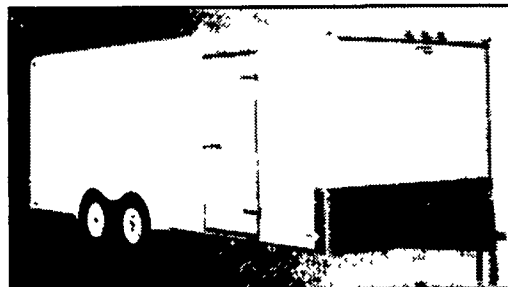
Bumper Pull and Gooseneck Std. and 8 ft. wide

Great Prices

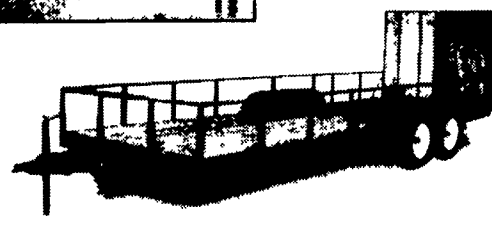
Standard & Custom



Full Line of Open, Enclosed & Horse Trailers
100 In Stock Units



Continental Cargo



Your Big-Tex Dealer

YARNALL'S EQUIPMENT CO., INC.

4171 Horseshoe Pike (Rt. 322) Honey Brook, PA 19344

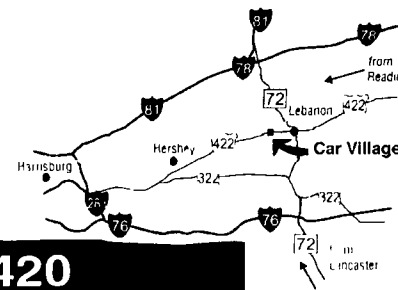
(610) 273-9200 • 1-888-900-7669

Business Hours:
Mon.-Fri. 9 to 9;
Sat. 9-4

2300 W. CUMBERLAND ST.
(Rt. 422)
LEBANON, PA 17042
(Across From Lebanon Valley Mall)

CAR VILLAGE

HEAVY DUTY TRUCKS



PHONE 717-274-2000 Toll Free 1-800-650-1420



4x4 95 DODGE CLUB CAB 2500 Heavy Duty 3/4 Ton Cummins Turbo Diesel, AT, A/C, Heavy Duty Tow Pkg. 4:10 Limited Slip, Dana Axle, 4 Brand New Tires \$18,900



QUAD CAB, 99 DODGE 2500 4X4 ST Only 7000 Miles, 24 Valve Cummins, Turbo Diesel, AT, A/C, Cloth Seat, Vinyl Floor, All Doors Open, Tow Pkg., Remaining New Tk. Warranty, Great Tk., Great Price \$29,900



5 SP. 1 TON, 94 FORD F350 4 WHEEL DRIVE Solid Front Axle, Powerstroke Turbo Diesel, 5 Sp., A/C, Dual Tank, Tow Pkg. Lock Out Hubs, Big Swing Out Tow Mirrors, Only 39,000 Miles



DIESEL SUPER CAB 4 WHEEL DRIVE 97 FORD F250 XLT, Super Sharp, Only 30,000 Miles Remaining New Tk. Warranty Powerstroke Diesel, AT, A/C, 40/20/40 Seat Aluminum Wheels, Tow Pkg



CREW CAB DUALLY DIESEL 96 FORD F350 CREW CAB DUALLY Powerstroke Diesel, AT, XLT, Aluminum Wheels, Very Nice, Only 43K Miles



14 FT. CUBE VAN 96 FORD E-450 Big 14,050 GVW Powerstroke Turbo Diesel, AT, Only 33,000 Miles, Real Clean Tk. & Ready To Go To Work



5 SP. DIESEL, 93 FORD F350 CREW CAB DUALLY Nice Tk, 67,000 Original Miles, 7.3 Diesel, Loaded XLT, Chrome Simulators, Heavy Duty Tow Pkg.



5 SP. GMC - 96 GMC K2500 SIERRA Heavy Duty 3/4 Ton, High Output 6.5 Turbo Diesel, 5 Spd., A/C, 22,000 Miles, Nice Clean Tk., Ready For You



4x4 DUALLY GREAT PULLIN MACHINE 95 DODGE 3500 Very Clean Only 47,000 Miles, Cummins Turbo Diesel, AT, A/C, Tow Pkg., Loaded SLT Laramie



4x4 CHASSIS CAB, 96 CHEVY K3500 12,000 GVW, 60" C.A., High Output 6.5 Turbo Diesel, 5 Sp., A/C, 4 10 Gears, Great Tow Machine



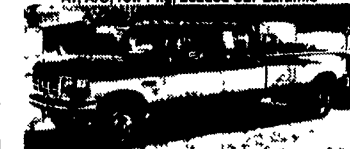
MECHANICS BODY 4 WHEEL DRIVE 96 FORD F250 XL 351 I.I. V8, 5 Spd. Trans, Very Nice Reading Body, 66,000 Miles \$18,900



TOW MACHINE 96 DODGE 3500 CLUB CAB DUALLY 4 Wheel Drive, This One Will Pull The Big Load, Cummins Turbo Diesel, AT, A/C, All Power Equipment, Heavy Duty Dana Frt. & Rear Axles, Tow Pkg.



19,000 POWERSTROKES, FORD F250 SUPER CABS, 4 Wheel Drive, Heavy Duty 97 XL Pkg. 70K 96 XLT Pkg. 97K Very Nice Clean Trucks



93 F350 CREW CAB DUALLY 480 Auto, Fully Equipped, Tu-Tone Paint, Got To See This One! \$17,900



SHORTBED CREW CABS, 97 FORD F250 XLT, 4 WHEEL DRIVE, 2 Avail., Powerstroke Turbo Diesel, AT, A/C, Tilt, Cruise, Power Locks & Windows, Dual Tanks, Tow Pkg, Alum. Wheels, Remaining New Tk. Warranty



460 4 DOOR 96 FORD F250 XLT 4 Wheel Drive, Perfect, Only 11,000 Miles, 460 V8, Auto A/C, Loaded XLT, Aluminum Wheels, Factory Tow Pkg., A Must See



FLATBED DUMP, 94 FORD SUPER DUTY Brand New 12 Foot Body, 7.3 Diesel, 5 Sp, Dual Tanks, Heavy 15,000 GVW, Only 53,000 Miles



4 WHEEL DRIVE, 96 FORD F250 SUPER CAB Great Price on a Nice Truck, Powerstroke Turbo Diesel, AT, A/C, Loaded, XLT, Aluminum Wheels, Limited Slip Gear, \$23,900



GREAT FARM TRUCK 94 FORD F250 4X4 Diesel Power, 4 Spd. Manual Trans., Lock Out Hubs \$9,900



PERFECT, 97 FORD F350, 4 DOOR, 4X4 Only 35,000 Miles, Powerstroke Turbo Diesel, AT, A/C, Loaded, XLT, 40/20/40 Seat, CD Player, Limited Slip Axle, Remaining New Tk. Warranty



2 WHEEL DRIVE 93 DODGE CLUB CAB Heavy Duty, 3/4 Ton Cummins Turbo, Diesel, AT, A/C, Capt. Chairs, Fold Down Gooseneck, Ball & Frame Mount, Class 3 Hitch



5 SP POWERSTROKE 4 WHEEL DRIVE 96 FORD F250 Heavy Duty Great Tow Machine, A/C, Very Clean & Runs Strong



WORK HORSE 98 DODGE 2500 4 WHEEL DRIVE ST Model Only 15,000 Miles, It's Like New, 24 Valve Cummins Diesel, AT, A/C, Tow Pkg., Vinyl Floor



4x4 DIESEL SUPER CAB, 93 FORD F250 Nice, Local Truck, Diesel Power, AT, A/C, Captain Chairs, Console, Tow Pkg. 80,000 Original Miles



5 SP. CUMMINS BEAUTIFUL 97 DODGE 2500 4x4, Only 36,000 Card For Miles, Cummins Diesel, Loaded, SLT Laramie Pkg, 4-10 Limited Slip Dana Rear