

**Wheel Chair Lift, 97 Dodge Hi-Top Van**  
 V8, Auto, Front & Rear Heat & A/C,  
 Very Clean Inside & Out, 61,000 Miles  
**\$17,900**  
 Trades Accepted, Financing Available  
**Car Village Lebanon**  
**717-274-2000**

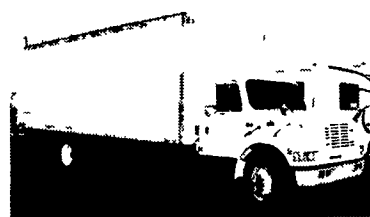


**CLEAN, CLEAN, CLEAN**  
 International Grain Dump, 300 Cummins, Eaton  
 Transmission & Rear 65,000 GVW, 20 Ft. Grain  
 Bed, Shur Lock Tarp & Maryland Inspection.  
 Bought This Truck On Washington Birthday  
 2000. Too Much Truck For My Operation.  
**Must See To Appreciate**  
**Asking \$22,950**  
**(301) 432-5568**

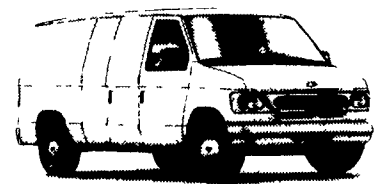
MCI MC-5 buses: (1) 1977,  
 exc cond, very low mi,  
 \$10,900. (1) 1976 fair cond,  
 runs & drives but has eng  
 noise, \$1,500. Both 8V71  
 Def, manual trans, updat-  
 ed steering boxes. No  
 Sunday calls.  
 717-597-5623.

'98 Chevy LS Express  
 2500 12 pass., extended,  
 350 auto, PS, PB, PW,  
 PDL, cruise, tilt, dual air,  
 AM-FM cassette, 42,000  
 miles, excellent condition,  
 \$18,500. 717-733-2873

'99 Dodge 2500 8 pass.,  
 318 auto, PS, PB, PW,  
 PDL, cruise, tilt, dual air,  
 AM-FM cassette, privacy  
 glass, 19,000 miles w/  
 balance of factory war-  
 ranty, dark green,  
 \$19,900. 717-733-2873



**1996 INTERNATIONAL 4700,**  
 w/24 ft van body, 25,500 GVW,  
 DT466, Allison Automatic, Low Miles



**1999 FORD E250,** 5 4 Triton V8, AT,  
 CD Player, 10,600 Miles, Full Shelving  
 Pkg w/Bulk Head, Swing Type Side Doors,  
 No Windows in Cargo Area Call Keith



**1993 FORD E350,** 15' Cutaway. Gas,  
 Auto, A/C, Stere, Chrome Wheels,  
 10,700 GVW, White Paint, Nice Truck



**1997 ISUZU NPR,** 250 V-8, Gas, Auto,  
 AC, 11,500 GVW, 14' Van w/Ramp,  
 48,000 Miles



**ISUZU 2000 FRR,** 200 HP 6 Cyl  
 Diesel, Allison Auto., 19,500 GVW,  
 A/C, AM/FM Cass, 19 5" Tires, 191"  
 Wheelbase **SAVE BIG \$**



**ISUZU 2000 NPR,** Gas, 14,050 GVW,  
 250 HP, V8 Engine, Auto Trans, A/C,  
 AM/FM Cass, 14' Van Body **GREAT  
 PRICE OR LEASE!**

**LOTS OF OTHER ISUZUS IN STOCK**

**WE DELIVER ANYWHERE!!!**



**FIVE STAR ISUZU** ★★ ★★

1810 South 19th Street, Harrisburg, PA 17105  
**Toll Free 800-438-4744 Keith Eshelman**

**ARMY 6x6 TRUCKS**

**2 1/2 Ton ★ 5 Ton ★ 10 Ton**



**M998 Hummers**  
**Available**  
**Harvest ★ Spreaders**  
**Feeders ★ Fuel/Water**  
**100% Financing**  
**Lease Plans**  
**(Qualified Buyers)**

Dependable and Field Proven

Complete Military Truck Parts Inventory

**MEMPHIS EQUIPMENT**

766 S. Third St.  
 Memphis, TN 38106  
 901-774-0600  
 Fax 901-946-1919

821 Lincoln Way West  
 Chambersburg, PA 17201  
 717-263-4194  
 Fax 717-263-4555

[www.memphisequipment.com](http://www.memphisequipment.com)

**THE NATION'S LARGEST ARMY TRUCK DEALER**

**BRENNER**

**PHONE: 717-232-4271**

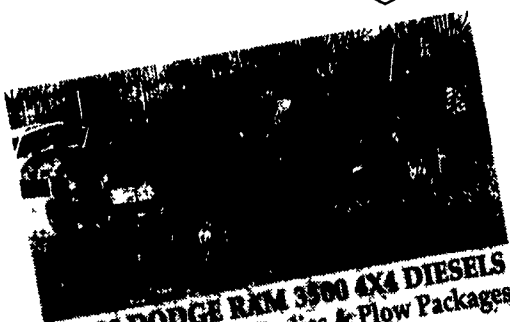
[www.brennerdodge.com](http://www.brennerdodge.com) Fax: 717-233-8221

Ron Jackman  
 Business Link Account Manager

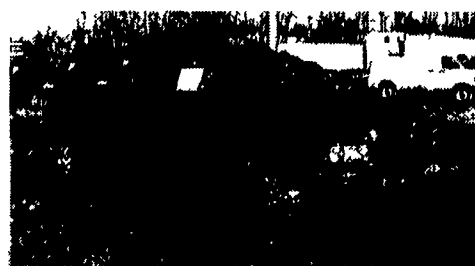
**The New Commercial Sales Group**

Ray Marino  
 Business Link Account Manager

**Harrisburg's Only BusinessLink™ Dealer "Saving the Customer Time, Money & Hassles"**



**2000 DODGE RAM 3500 4X4 DIESELS**  
 With Stahl Utility Bodies & Plow Packages,  
 AT, AC, Gas



**2001 DODGE RAM 3500 DUALLY**  
 Cummins 5.9 Diesel, AT, A/C, Most Options



**2000 DODGE RAM 3500 DUALLY 4X4**  
**DIESEL QUAD CAB, AT, A/C, PW, PL, C, T,**  
 Diamond Plate Running Board & Tool Box,  
 Chrome on Steel Crush Guard, Trip Meter, Black

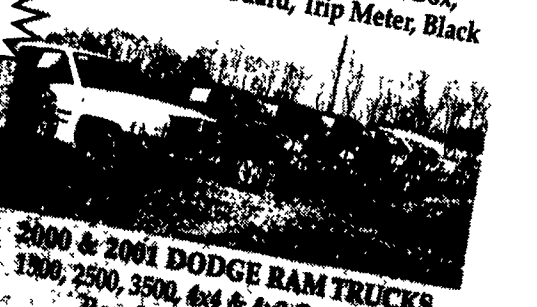
**0.9% Financing!**  
 Call For Details!



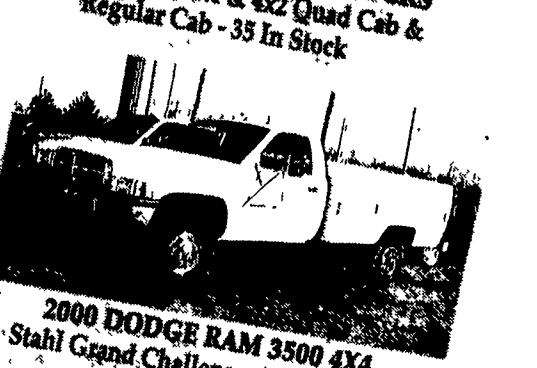
**2000 DODGE RAM 3500 MAXI VAN**  
 15 Passenger  
 Mover, Center Console  
 Dual Air, Radio  
 Roof, At, Cruise,  
 Tilt and More



**DODGE**  
 1500, 2500, 3500



**2000 & 2001 DODGE RAM TRUCKS**  
 1500, 2500, 3500, 4x4 & 4x2 Quad Cab &  
 Regular Cab - 35 In Stock



**2000 DODGE RAM 3500 4X4**  
 Stahl Grand Challenger Utility Body,  
 AT, A/C

1812-1830 Paxton Street, Harrisburg, PA 17104

**2000 DODGE RAM 3500 4X2**  
 Stahl Utility Bodies, Power Up & Power Down,  
 AT, Gas, Diesel - Year Critical!