

CHAPMAN

FORD LINCOLN MERCURY NISSAN

LEBANON

717-272-7671

Parts Dept. Open Daily 8-5
Sat. 8-12 717-273-8168



20th & Cumberland Sts.
Rt. 422 West
9-9 Daily, 9-5 Sat.

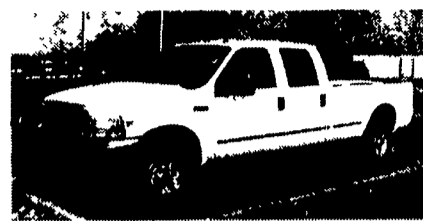
87 Ford 7000 22 Ft. Reefer
Insulated Morgan Body w/Roll-Up Rear Door, Carrier Diesel Unit w/Electric Standby & Liftgate, 6.6 Diesel/5 Speed / Air Brakes, 1 Owner Since New, As Nice As You Will Find, No Damage Or Dents, Must See & Drive **\$13,900**
Daves Tag & Title Service
410-676-1206 410-679-6850



97 FORD F250 SUPER DUTY
4x4, Super Clean, Must See, only 45,000 Miles, WOW. #4424A



97 FORD EXPEDITION "EDDIE BAUER"
All The Toys, Leather, 48,000 Miles, Hurry. #4200A



99 FORD F350 CREW CAB
4x4, 7.3 Power Stroke Diesel, 6-Spd., A/C, Lariat, (Hard to Find)



93 FORD EXPLORER SPORT 4x4, Fully Equipped, only 28,000 Miles. #709A



98 FORD RANGER
Auto, A/C, Cass., Perfect Work Truck, 33,000 Miles, #4295A
FREE TOOL BOX WITH PURCHASE



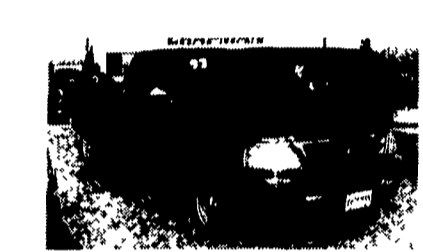
2000 EXCURSION 7.3 PS Diesel, Leather Towing Pkg. #4393A, Green, 2,800 Miles!



97 GMC SLE 4x4, 350 AT, Z71 Off Road Pkg., 43K Miles, P4184A, Teal



97 JEEP CHEROKEE LAREDO 6 Cyl., AT, A/C, Alloy Wheels, 48,000 Miles, #P4309



97 FORD F150 SUPER CAB XLT, 5 Spd., A/C, Low Miles, Long Bed

Credit Problems? Call 1-888 CARS 4 You
TRUCKS - UTILITY VEHICLES - TRUCKS

Quic 'n Easy
RECEIVER HITCH BY DMI
The Latest In-Tow-Vation!

DMi Receiver Hitch

- Fits under your truck bumper, mounting directly to your truck frame
- Brings the receiver to your load - extends 7" and swings 12"
- Exclusive Proximity Hook-up - one person gets it right the first time
- Spring "Cush'n" takes the push/pull out of towing, lowering stress on the driver and truck drive train
- Tows whatever your truck is rated to tow - exceeds Class IV certification
- Accepts a variety of adapters drawbar, ball, step-up or step-down, pintle hook and weight distribution system

Never Miss a Hitch Again. DMI

no need to match up receiver extends 7" swings 12" left to right back up to lock pull forward to align

Weaver Distributing
1-800-Weaver-D
RR2 Box 470 Fredericksburg, PA 17026

LIGHT DUTY COMMERCIAL TRUCKS

<p>4 to Choose!</p> <p>\$22,999</p> <p>2000 GMC SAFARI MARK III CONVERSION VAN Luxury capt. chairs, fold. bed, video player, 9" color TV, game ready, Pro Air central heat/A/C and more! Stk #7630 Was \$33,057</p>	<p>only!</p> <p>\$25,999</p> <p>2000 GMC SIERRA 3500 STAKEBODY Omaha Heavy Duty Body, 12'x96" Wood Floor, Steel Racks, AC, AT, HD Chassis, Locking Rear and more! Stk# 7734</p>	<p>\$25,999</p> <p>2000 GMC 1-TON BOX VAN 5700 Vortec V8, AT, AC, 15 ft. box, dual wheels. Brand New & Ready to Go! Stk# 7697 Was \$29,438</p>	<p>only!</p> <p>\$24,999</p> <p>2000 GMC 3500 HD DUAL WHEELS CAB 7400 V8, AT, AC, 463 rear, PS, 1500 GVW Stk# 7727 Was \$27,297</p>
<p>only!</p> <p>\$12,999</p> <p>2000 GMC SONOMA AT, A/C, 4.10 rear, alloy wheels, AM/FM CD, tilt, CC, 4200 GVW, and MORE! Stk# 7647 Was \$17,218</p>	<p>ASK ABOUT FREE BIN PKG!</p> <p>\$18,499</p> <p>2000 GMC SAFARI CARGO VAN V6, AT, AC, PS, PB, AM/FM and more! Stk# 7616 Was \$20,879</p>	<p>\$26,999</p> <p>2000 GMC 1/2-TON EXT CAB 4X2 PICKUP 5300 Vortec V8, AT, AC, tilt, PW, PL, HD trailer pkg., 6200 GVW and more! Stk# 7507 Was \$27,761</p>	<p>ASK ABOUT FREE BIN PKG!</p> <p>\$19,999</p> <p>2000 GMC SAVANNA 3/4-TON CARGO VAN AT, AC, PS, PB, front bucket seats, free bin pkg. available if qualified Stk# 7531 Was \$22,524</p>
<p>only!</p> <p>\$32,999</p> <p>2000 GMC 3500 HD DUMPBODY 6.5 Liter Turbo Diesel, AT, 15000 GVW, Heil 8'6"x7' Super Marauder Dump, Voisard ABC Tool Box, and More! Stk# 7721</p>	<p>\$23,999</p> <p>1999 GMC SIERRA 2500 Stahl utility box, Vortec 5700 V8, AT, AC, HD tail gate, locking rear. Stk# 7085 Was \$28,449</p>	<p>SHOW FLOW ADDED!</p> <p>\$25,999</p> <p>2000 GMC 3/4-TON 4X4 5700 V8, AT, AC, 7-1/2 ft. E60 Meyer snow plow, class-M hitch, locking rear and more! Stk# 7607 Was \$32,228</p>	<p>\$26,999</p> <p>2000 GMC 3/4-TON EXT CAB 6000 Vortec V8, PW, PDL, tilt, CC, 8600 GVW and more! Stk# 7719 Was \$32,668</p>
<p>DUAL WHEELS</p> <p>\$26,999</p> <p>2000 GMC 1-TON EXT CAB SLE 4X4 7400 Vortec engine, PW, PL, HD trail, pkg., P/seat, lock, rear and more! One of a Kind! Stk# 7669 Was \$32,232</p>	<p>\$36,999</p> <p>2000 GMC 1-TON CREW CAB DUALY 6.5 Turbo Diesel, AC, PW, PL, HD trail, pkg., 10,000 GVW, 4.10 rear and more! One of a kind! Stk# 7590 Was \$36,840</p>	<p>ONLY 2 LEFT!</p> <p>\$36,999</p> <p>'99 GMC SUBURBAN 1/2-TON 4X4 5700 V8, AT, PW, PDL, lock rear, HD trail, pkg., leather seats and more! Stk# 7075 Was \$41,394</p>	<p>ONLY 2 LEFT!</p> <p>\$26,999</p> <p>2000 GMC SAVANNA PASSENGER VAN 5700 Vortec V8, 8-pass, PW, PDL, tilt, CC Fully Loaded! Stk# 7655 Was \$29,429</p>

Cole
PONTIAC • BUICK • GMC

Credit Problems? We Can Help!

610-363-7200

421 W. Lincoln Hwy. • Exton (Rt. 30-Across from Applebee's)
Hours: Mon. thru Thurs. 9 am-9 pm • Fri. 9 am-8 pm • Sat. 9 am-5 pm • www.coleypontiacbuick.com • E-mail: JcoleyPBG@aol.com

GMC
"Do One Thing. Do It well"

Prices include all factory rebates to qualified buyers. Tax, tags & registration fees additional. See dealer for details. All prior sales excluded.