

**35 TRUCKS AND TRAILERS**

1981 Chevy crew cab dually repowered with I.H. DT466 diesel, ex cond., \$9,995 (570)897-9090.

1979 Mack superliner tandem axle dump, 350 Cummins 15 spd. \$17,500 (610)932-3089.

1997 green Chevy Tahoe, 4WD, 4-dr, fully loaded, like new, 42,000 mi, \$25,900. 610-269-7900.

1997 Chevy Duallie, White, Dsl, 18K Mi., Fully Loaded + Extras! 6-Wheel Drive, Auto, \$25,900. 610-269-7900.

'95 Chevy 2500 extend-a-cab, 4x4, 6.5 turbo diesel, auto trans, ex. cond, \$19,900. 215-766-8361

Mack tri-axle, 1985, 17 1/2' alum dump, air tailgate, 5spd, Jake, runs every day, \$18,500 obo. 301-582-4738

1980 Mack triaxle dump R model 300hp. 75pd 18+44 on camelback new clutch, air comp., hoist cylinder, front tires, brakes, king ping recent overhaul on eng., and rears 16' st. body with air gate & tarper asking \$25,000. (610)863-9193.

62 ft Fairbanks Morris, 100,000 lb. capacity, in-ground, digital scale, good cond, \$7500. 610-346-7374

1993 Ford LTA 9000 tractor, N14, 350 Cummins, 9 spd, Jake brake w/wo wetline, 2 line system, \$14,900 obo. 717-258-5224

'96 Ford F450 Super Duty, Jerr-Dan alum Transporter rollback w/ wooden deck, P/S turbo dsl, 5spd, air, 49,000 org mi. Nussbaum's Wreckers & Rollbacks, Columbia, PA, 717-684-0189.

'99 Dodge 3500 12 pass., 360 auto, PS, PB, PW, PDL, cruise, tilt, dual air, AM-FM cassette/CD, Michelin radials, 4,000 miles w/balance of factory warranty, dark green, like new, \$20,500. 717-733-2873

'93 Chevy Cheyenne 1500 WT, HD, 1/2 ton, 305, 5 spd, PS, PB, air, AM-FM, black, excellent condition, \$5,900. 717-733-2873

'97 Dodge 3500 12 pass., 318 auto, PS, PB, dual air, AM-FM cassette, dark blue, 74,000 miles, \$10,900. 717-733-2873

1989 Monon, 1986 Strick 53102 vans. Call 717-872-5173.

**MOTORS**  
New & Rebuilt  
350, 366, 427, 454  
6.2 Diesels  
Rebuilt & Used  
Will Install  
717-762-6415

**Int. Truck Model 1994, 1989, GVW \$2,800, Only \$11,000 Miles w/Jerr-Dan, 15 Ton Rollback \$25,000 (215) 948-8805**

**96 GMC K2500 EXTENDED CAB**  
4WD, SLE, 350 Vortec, AT, A/C, PW, PDL, Cruise, Tilt, AM/FM/Cass, 8600 GVW, Local 1-Owner, 109,000 Mi., Teal Green  
**\$15,700**

**97 FORD F250 XL SUPER CAB**  
4WD, 351 Fuel Inj 5 Sp., A/C, AM/FM, 8800 GVW, 1 Owner Truck Dk Blue, 67,000 Mi  
**\$18,900**

**MARTIN'S AUTO SALES**  
1025 W. Main St. New Holland, PA 17557  
**(717) 656-6621**

**1990 SCHNUR TRAILER**  
GVW 49,000 lbs., Tilt Deck with Air Lift  
**\$9,000**  
**717-872-6777**

**FISHER TRAILER SALES**

- **Moritz - Special - \$3,800**  
Slant load Horse/Stock Combo  
Retail \$4,135  
2-Horse 13' Bp 7' tall, slant divider, bridle rack, 1 slat sides, swinging slant wall for dress room, saddle racks. (5) in stock. Available: 13 - 16 - 18 - 20 ft. length, Gooseneck and Bumper.
  - **Moritz - Stock Trailers and Flatbeds**  
Starting at **\$3,400**
  - **Ponderosa - Stock \$2,700 and up**
  - **Used -**  
'90 Ponderosa Gooseneck, Stock 14 ft. .... **\$2,200**  
'89 Bison Bumper Stock w/Dress Room, 16 ft., 7' Tall..... **\$2,000**  
Other Used Trailers ..... **\$1,300 and up**
- 223 Middle Rd. Phone **717-242-0941**  
McVeytown, PA 17051 Fax **717-242-4377**

**Eagle Bros. Used Cars**  
Lebanon, PA 717-228-0558

'96 Dodge Grand Caravan SE, Tinted Glass, 5 Doors, 7 Pass, 3.3L V6, Auto, 60,000 Miles, No Visible Front Damage, Needs Air Bags, Pa. Cert. . \$4,500

'95 Ford Windstar GL, Tinted Glass, Loaded, 7 Pass., 3.8L V6, Auto, 85,000 Miles, Hit Front, Runs & Drives, needs Air Bags, PA Cert. . \$2,850

'93 Ford Ranger STX, 4x4, Long Bed, 4.0L V6, 5 Spd, 111,000 Miles, A/C, Cassette, Bedliner, Green w/Tan Int, Right Side Swipe and Suspension, PA Cert. \$2,250

'97 Mercury Sable Wagon GS, 3.0L V6, Auto, 3rd Seat, Loaded, 26,000 Miles, Black w/Gray Int., Hit Left Front, Needs Air Bags, Runs & Drives, PA Cert. \$3,500

- '99 Ford Taurus LX, 1,600 Miles..... **\$3,900**
  - '98 Ford Escort SE, 42,000 Miles w/Parts..... **\$3,500**
  - '97 Buick LeSabre, 16,000 Miles..... **\$2,800**
  - '96 Plymouth Neon, 5,600 Miles..... **\$2,300**
  - '95 Chevy Beretta, 35,000 Miles w/Parts..... **\$2,600**
  - '94 Pontiac Grand Am, 71,000 Miles..... **\$1,600**
  - '93 Mercury Sable, 77,000 Miles w/Parts **\$2,900**
  - '89 Chevy Cavalier, 77,000 Miles w/Parts.. **\$775**
  - '88 Ford Escort Wagon, 5 Spd., 70k..... **\$500**
- Call For More Details

**CHEVROLET GEO BUICK Oldsmobile PONTIAC CHEVY TRUCKS**  
**OUTTEN**  
**TOTAL TRANSPORTATION CENTER**



**2000 CHEV 3500 CAB & CHASSIS**  
AT, A/C, 15,000 GVW STOCK \$33707



**1999 CHEV 3500 CREW CAB DUALY 4X4**  
454 V8, CUSTOMIZED, AT, SILVERADO (MANY OPTIONS) WAS \$39,604, **NOW \$33,900**

- also -  
**2000 CHEV 2500 CAB & CHASSIS**  
AT, A/C, 8,600 GVW STOCK #33703

**Outten Hamburg Rt. 61, Hamburg PA**  
**1-800-451-2333 • 610-562-2216**



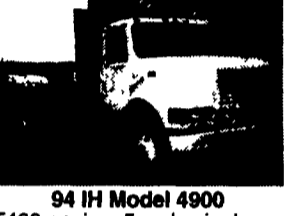
**New Flatbeds Available**  
Sizes currently available are 12', 14', 20', 22' and 24'. Racks are also available.



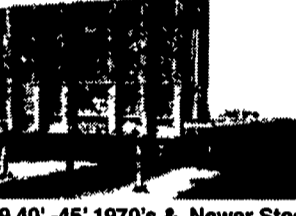
**80 Ford LN900 Water Truck**  
477 V-8, 5 Spd., 2 Spd. Rear, 2400 Gal. Heil Stainless Water Tank, PS, AB, 10.00x20 Tires, 35,000 Lb. GVW



**12' Reefer Body,**  
under body refrigeration unit, Uses 220 electric. Has damage.



**94 IH Model 4900**  
DT466 engine, 5 spd., single rear, air brakes, A/C, 32,900 GVW, double frame, 11x22.5 Budds, 254" W.B.  
**19' NEW Lumber Body w/Ratchet Tie-Downs w/Dumping Hoist**



**9 40' - 45' 1970's & Newer Steel Flatbed Trailers (also have drop check trailers) some have sliding tandems, all in good condition. \$2,500/Ea. and Up**



**Aluminum Tanker/Trailers**  
7500 gal. and up  
**4 I-Beams,**  
49' Long, 28" High w/12-1/2" Web



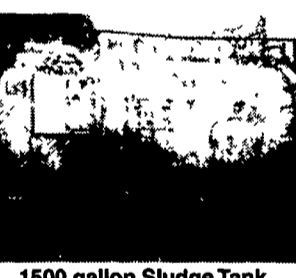
**Michigan Loader Model L30**  
Quick Coupler, Comes With 1 Yard Bucket and 60" Forks, Runs Excellent



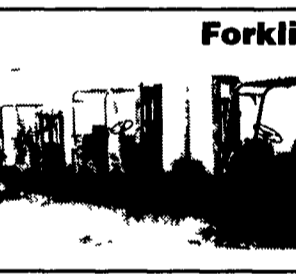
**W7 Case Loader.,**  
15.5x25 tires, runs good serial #9900486



**Clark Crane, 14 Ton Capacity,**  
4-53 Detroit, 60' boom, 14.00x24 tires, runs good serial #720



**1500 gallon Sludge Tank**



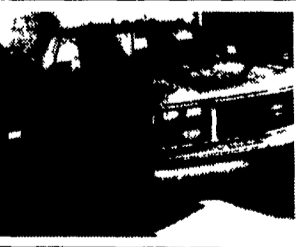
**Forklifts For Sale**

**Hyster 2,000 lb capacity, 3 wheeler,** propane gas, solid tires, 92" Fork height, 48" forks  
**Towmotor 4,000 lb capacity, 2 stage mast, 108" Fork height, 42" forks,** solid tires  
**Towmotor 2,000 lb capacity, 106" Fork height, 42" forks, solid tires**

**11.1 60 series Detroit engines**  
**12.7 60 series Detroit engines**  
**8.2 non-turbo Detroit engines**

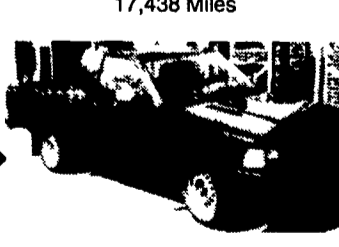
**83 Eagle Wagon Ltd.**  
4 WD - 115,000 Miles

**1994 Isuzu Model NRR**  
6 Cylinder, Auto, 1400 Aluminum Tank with Pump, 13,250 GVW, 17,438 Miles



**89 GMC Sierra SLE**  
Chattanooga Choo Choo Custom, 4WD, 16" Aluminum Wheels, Running Board, 132,007 Miles

**1993 Toyota Pickup**  
4 Cyl., 5 Spd Trans., AM-FM Radio, A/C, Excellent Condition, High Mileage



**Pedestal Grinder**  
Baldor 2 Hp., 3 phase, 220 amps  
**Toledo Scale**  
1,000 lb Capacity  
**New Onan Generator**  
2500 Watt Gas Powered  
**Used Van Trailers**  
For Sale or Rent

**Hundreds of Used Truck Tires For Sale**  
Sizes from 16" to 24"  
**1979 Crane Carrie Cement Mixer,** 10Yd Rex Mixer, 230 Cummins, 8 Spd Trans., 44,000 Lb Rears Asking \$8,500

**Used Overhead Door For Sale**  
16'H x 14'W Asking \$550  
**Aluminum Loading Ramps**  
9'x10', also some other sizes available  
**Yale Electric Hoists**  
1/2 ton cap, 440 volt, single and three phase Asking \$350/ea.

**Wm. Cohen & Sons, Thorndale, PA**  
**(610) 269-1298 Call between 7 am - 4:30 pm**