

1995 Ford E150 club wagon, dark blue, 63,000mi, tinted windows, exc cond, \$10,800. No Sunday calls. 717-597-5623.

(10) 1100 R 20 Tires, Mounted. (2) New Caps, Never On Road, (8) With 50%-70% Rubber. \$1300. 717-486-7135

88 Fritl Conv Tractor, 60' Bunk, 95 Tailbot Step Deck Trailer, Chain Binders. Call for Complete List \$20,000/obo. Will Separate. 570-374-1608

1979 Mack triaxle w/21' Jiffy hyd boom for block, brick or stone. 717-432-3067.

Rockwell rears, 410 ratio on Peterbilt airleaf suspension, \$1,500. Sell as set. 717-721-9066.

24' Dump Trailer, 1964, Alum Parker, \$3,500 856-935-0348

'00 Moritz 31'x8' triaxle gooseneck flatbed trailer, w/flip down beaver tail & ramp, 20,000 GVW, \$6050. 301-739-7604

'96 Ford F150 XLT, 4x4, 29,000 mi, loaded, extras, match cab, must C, \$18,500, must sell! 610-562-8249

1985 IH series 1954, DT466, 5+2 spd, 26' van box, hyd brakes, 28,000GVW 250,000 Mi. \$8,500; 1976 C65 Chevy, 427, 5+2 spd, 24' flatbed, removeable stake body, air brakes, air ride seat, 30,000 GVW \$3,200 (570)966-1610

1985 Mack rolloff tandem axle, 300hp, A/C, Eaton 10spd double frame, air ride, cab, runs good. Can separate, \$19,500 OBO. 717-733-3438.

Mack tri-axle dump, 300 6SP, A/C, best offer. Must sell. 610-944-5538

Antique classic 1965 GMC school bus, 16 coach seats plus luggage area, best offer. 717-846-1060 8:30am-2:30pm

'86 Chevy Suburban, 3/4 ton, 454 CID, high mileage, runs good, \$3000/offer. 301-473-4466 days, 301-834-7486 eves

Truck side racks & headboard, Omaha Standard Super duty fits 16' bed, grain type, solid 52"H, like new cond, \$950. 301-473-4466 days, 301-834-7486 eves

Nice dump truck, '88 Ford L8000 single axle, air brakes, in-cab dump controls, air gate, ex cond. \$15,900. 717-266-7227

'94 Chevy HD 2500 w/8' Stahl utility body w/slide top, 350, auto, PS, PB, AM-FM, 8,600 GVW, 63,000 miles, red, excellent condition, \$11,500. 717-733-2873

1988 GMC tree truck, excl. cond, \$3900. 12" chipper, excl. \$2600. Farmall H tractor, \$850. 215-885-1032

1988 Yankee, Steel Walking Floor Trailers. 45', 100 Yds. Need Work. 610-921-1971

For Sale 1987 Summit, Alum Walking Floor Trailer. 45' Long, 100 Yds. 610-921-1971

1995 Strick single axle dolly, Dayton wheels, S-cam brakes, good tires. 717-244-4903.

Holland air slide 5th wheel, 40" sleeper w/air fairing. 610-932-8999

1991 Freightliner, model D120, Cum L10-300hp, needs work, Fuller 9spd trans, air ride susp, very clean, fleet maintained, \$4,500. 800-766-5426.

NGS 5th wheel tandem axle trailer, v.g. cond. 610-588-7986

1974 GMC dump truck, 19,000 GVW, \$2000. 717-792-2546

1972 Ford 900 high lift coal truck; 1984 Super Goose 14' livestock trailer. 570/265-9299.

14' Stake bed w/4' sides, tailgate, pump & hoist included. \$2,000/obo 540-833-8315

KEYSTONE TARPS

SERVICE & SALES

Is A Manufacturer Of Custom Tarps

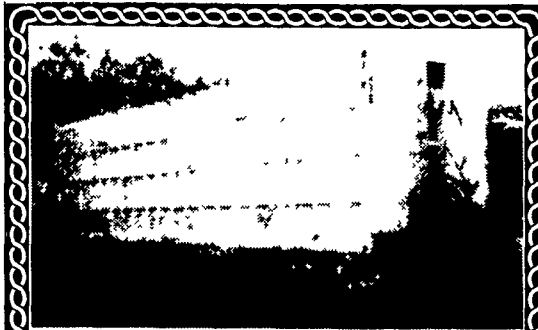
- Systems
- Load Straps
- Tarps
- Gloves
- Storage Covers
- Used Railroad Ties



1-800-798-TARP

(8277)

FAX 570-435-0036 570-435-0752



Clemens Pushout Trailer
\$3,500 or best offer
(610) 485-5174



1977 GMC DUMP

72,000 Miles, 27,000 GVW. Gas Engine, Hydraulic Brakes, Like New Tires, 10 Ft. Walk Plow, Controls for Tailgate Spreader
\$3,000 • Phone 717-647-9533



1983 GMC 7000 210 hp Cat Diesel,
5+2 Trans, 28,000 GVW,
20 ft. Litter and Lime Spreader,
Body Floater Tires. Ready To Spread.

Call 717-532-6397
\$14,000



(1) 1999 FL60 Freightliner with 250 Caterpillar Engine 6 Speed Allison Automatic, Single Axle, AM/FM Radio, Air Condition, Pull Out Sofa Bed, Curtains, Tinted Windows, Towing Bed, Hauler Bed, Bumper Hitch, 87,000 Miles, Comes With Freightliner Warranty Need To See To Appreciate \$65,000.00

Contact: Dave Shenk

Home Phone : (717) 392-1795

Cell Phone: (717) 940-8092

Truck is located in Bird-in-Hand, PA



(7) 28'X96" Pup Trailer
\$1,950

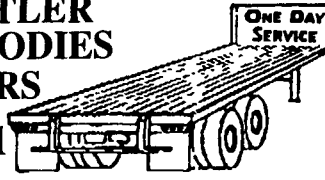
(4) 28'X102" Pup Trailer
\$2,850

Curry Supply Co., Curryville, PA
1-800-345-2829

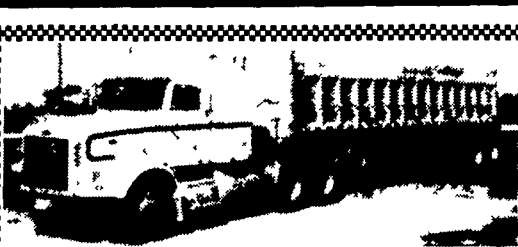
TRAILER FLOORS INSTALLED OAK OR APITONG

HOSTETLER
TRUCK BODIES
& TRAILERS

(717) 667-3921



Milroy Exit off Rt. 322
Between Lewistown & State College



1988 357 Peterbilt, 13 speed, 4:11 rears, 350 Cat eng. (fresh overhauled), new radiator core, new clutch, new front tires, back tires are 50% to 80%, Wetline, air ride, 36" bunk, w/1997 East all aluminum frameless trailer, 2 way gate, coal chute, empty gw 30,000, air ride truck & trailer combination. Will consider separation.

\$55,000 OBO

410/556-6642 (Call after 6 PM)



MS 250 93 6 Speed, 22 Ft. Frame, AC
\$10,500

CS 250 89 w/Flat Bed 23 Ft. \$12,800
A & Z Custom Services LLC
814-629-9233

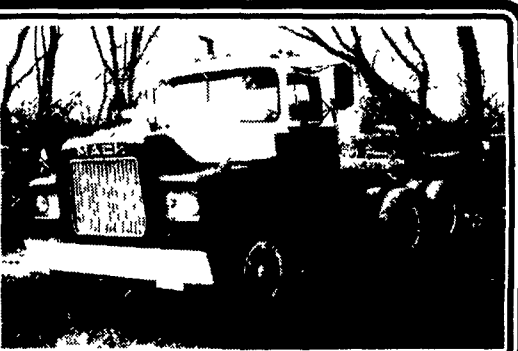


1988 WHITE VOLVO
400 Cummins, 603,000 Mi.
\$8,000
717-355-2361



(3) International Paystars Cab & Chassis; Engines Detroit 8V92 435-475 HP; 18,000 lb. FA; 44,000 lb RA; Double Frame; Price: \$7,500

Curry Supply Co. Curryville, PA
1-800-345-2829



1975 R Model Mack 300,
38,000 lb. rear with a wet line.
Ready to work

Call 215-673-8791

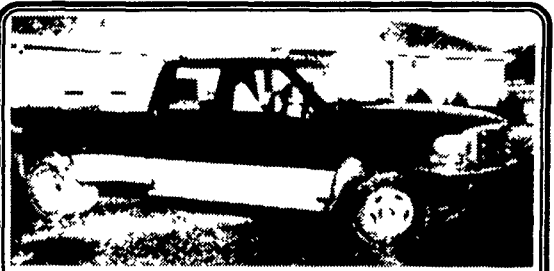
FOR SALE OR TRADE 1978 WHITE

w/20' Grain Body, Dump, Tandem
Best Offer or Trade for a
JD 900 HC Tractor
CALL EVE (215) 794-8457

1980 Mack 10 wheeler dump, 300, 10 speed w/1 way 11-1/2' snowblade \$15,000
1979 Chevy C70 dump, 366, 5+2 speed, w/Myers 10' 2-way blade, tailgate salt cinder. \$5,500
Ford F350, 4x6, Boss V-plow, in-bed salt cinder \$15,500
Austin Western 6 wheel drive articulating grader, 11' 1-way blade on front, 11' wing plow, Detroit power..... \$17,000
Fiat Allis 745B articulating loader \$19,500
Walters Snowblower, AWD, AW steer, 450 hp engine in back, 250hp engine in front, adjustable chute, 8' snowblower on front, twin augers \$16,500

717-657-1516

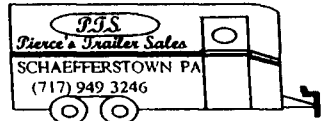
Offers welcomed



1999 Ford 350, diesel, clean, dually, 4WD, alum. wheels, crew cab, AC, PW, PB, cruise, Tilt, Auto, XLT interior, gooseneck & bumper hitch, vac brake hookup, super hauler. CALL FOR PRICE.

Super Deal! 1999 40' gooseneck tandem axle, flatbed, sharp \$5,500

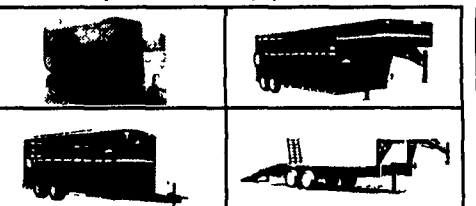
610-273-1257



By mail 709 W Main, Newmanstown, PA 17073-8953

Pierce's Trailer Sales

Authorized Dealer for
MONARCH, MORITZ, PA INTL.
thoroughbred horse trailers, stock trailers, utility, dump, flat-bed, and equipment trailers



CASH FOR USED DIESEL TRUCKS!

WE NEED 1/2 TON TO ONE TON:

- FORD DIESELS
- SUPERCABS
- CREW CABS
- DODGE CUMMINS
- 2WD OR 4X4
- DUALIES
- DUMPS
- UTILITY BODY
- FLAT BEDS
- CAB & CHASSIS
- SUPER DUTIES

LOW MILEAGE ONLY PLEASE

Before you sell or trade your diesel in somewhere else for LESS.

CALL US!

We Pay More for Used Diesel Trucks Than Anyone. 717-949-2000 TRY US!

or 610-678-3243

Ask for Smokey or Kay



RD 7, Box 405
Lebanon, PA
17042



1984 International Crew Cab 4 Dr.
V8 Diesel, Auto, Air Brakes, Central Hyd System, 84,000 Miles
\$3,995

1991 Jeep Cherokee
6 Cyl., Auto, PS, PB, AC, Tilt & Cruise
\$5,995



STROBECK'S AUTO SALES
262 W. George St Yoe, PA 717-244-4282