

Central Carlot Pork Report Des Moines, IA Wed Mar 8, 2000

USDA Market News
USDA NATIONAL CARLOT PORK
REPORT Equated to FOB Omaha Basis as
3:00 P.M.

Compared to Tuesday's Close: Fresh
loins firm; butts mostly 2.00 higher; sknd.
bone-in hams mostly steady; sds. bellies
steady to 1.00 lower; lean trimmings gen-
erally steady. Trading moderate, with light
to moderate demand and offerings.

Loads PORK CUTS : 75.13 Loads
TRIM/PROCESS PORK : 61.0 USDA
ESTIMATED PORK CARCASS CUT-
OUT Based on FOB Omaha carlot pork
prices and industry yields.

Calculations for a 185 lb Pork Carcass
51-52% lean, 0.80"-0.99" backfat at last
rib Total Today's Primal Cutout Values
Date Loads Carcass Loin Butt Pic Rib Ham
Belly 03/08 136.1 61.62 61.60 59.54 31.89
138.78 42.11 83.75 Change : -0.30 0.07
1.38 -1.50 2.58 -0.40 -1.36 03/07 137.1
61.92 81.54 58.16 33.40 136.21 42.51
85.10 03/06 51.6 62.15 81.38 57.13 33.23
136.21 42.99 87.17 03/05 58.9 61.36 79.65
56.10 33.27 136.21 41.97 87.17 03/02
108.1 61.74 79.34 53.56 33.33 136.21
45.01 86.78 Current Five Day Simple
Average - 61.76 80.70 56.90 33.03 136.72
42.92 85.99

NOTE: Value may change without
adequate test. A detailed description of the
cutout is available upon request.

FRESH PORK CUTS PRICE RANGE
WGHTD AVG. LOINS, BONE-IN Primal
Cutout Value = 81.60 **ABP Regular
14-18# = 80.00 - 83.00 81.80 Lds Price
Range Wghtd Avg. 1/4" Trim 13-19# 1.5
108.00 108.00 1/8" Trim/less 13-19# 6.0
111.00 - 114.00 112.50 1/4" Bladeless
116.00 116.00 C 1/4" Trim 19-23# 7.0
103.00 - 105.00 103.86 combos 23/Up#
1.0 50.00 50.00 LOINS, CNTRCUT, 10-11
RIB, 1/4" TRM Tender-in FLO 8-13# 1.0
149.00 149.00 Tender-out FLO 8-13#
BNLS Strap-on 5-9# 171.00 - 179.00
175.00 A BNLS Strap-off 5-9# 173.00 -
194.00 176.21 A WHLE BNLS LOINS
7-11# BNLS SIRLOIN 7.5-1# 1.25 110.00 -
114.00 111.80 BONE-IN SR 2.5-3.5#
BLADE ENDS 2-4# TENDERLOIN
1.25/DN# 0.38 255.00 - 260.00 258.33
LOIN BACKRIB (BOXED) FRSH/FRZN
1.5/DN# " 1.75/DN# 379.00 379.00 A "

1.75-2.00# 280.00 - 305.00 288.33 A -
2.00/UP# 0.5 280.00 280.00 LOIN BACK-
RIB (COMBOS) 1.75/DN# 325.00 325.00
E PICNIC Primal Cutout Value = 31.89
**ABP Untrmd Picnic = 29.00 - 30.50
30.17 D Lds Price Range Wghtd Avg.
Smkr Trm, RS, combo 5.0 32.00 32.00
Smkr Trm, SS, boxed 45.00 - 50.00 47.50
A PICNIC CUSHION MEAT Combo 92%
Fresh 91.00 91.00 E Boxed 92% Frozen
unq BOSTON BUTT Primal Cutout Value
= 59.54 **ABP Regular 4-8# = 55.00
55.00 Lds Price Range Wghtd Avg. 1/4"
Trim 4-9# 2.5 77.00 77.00 1/8" Trim 4-9#
1/4" Trim Neck-off unq 1/8" Trim Neck-
off 2.0 89.00 89.00 BNLS, Cellar Trim
combo's 9/UP# SPARERIB Primal Cutout
Value = 138.78 **ABP 1.5-3.5# = 123.00 -
125.00 124.33 -Lds Price Range Wghtd
Avg. 3 BAG/3 PCVAC 3.8/DN# 1.5
150.00 - 152.00 150.67 2 BAG/3 PCVAC
3.8-5.8# 0.5 130.00 130.00 COMBOS
3.8/DN# COMBOS 3.8-5.8# SKINNED
HAM Primal Cutout Value = 42.

11 **ABP Untrm Sel 17-20# = 52.00 -
53.00 52.70 **ABP Untrm Sel 20-26# =
37.00 - 44.00 40.02 Lds Price Range
Wghtd Avg. BONE-IN, TRIMMED
17-20# Trim Spec 1 5.0 56.00 - 57.00
56.70 20-23# Trim Spec 1 8.0 45.00 -
48.00 46.25 23-27# Trim Spec 1 11.0
41.00 - 44.00 42.23 17-20# Trim Spec 2
20-27# Trim Spec 2 39.00 39.00 C 27#/up
Trim Spec 2 BONELESS MUSCLES
94-96% 3 Muscle Group 4 Muscle Group
99.00 99.00 E 5 Muscle Group 3.0 98.00
98.00 Inside Outside Knuckle 1.0 104.00
104.00 Lite Butt Inner Shank HAM TRIM-
MINGS (CHEM LEAN) Combo 72%
Fresh 1.0 38.00 38.00 Boxed 72% Frozen
Combo 90% Fresh Boxed 90% Frozen 1.0
56.00 56.00 Outer Shank Frozen BELLY,
SEEDLESS Primal Cutout Value = 83.75
**ABP Untrmd 12-14# = 80.00 80.00
**ABP Untrmd 14-16# = 81.50 - 83.00
81.89 **ABP Untrmd 16-18# = 80.00
80.00 Lds -Price Range Wghtd Avg.
SKIN-ON, TRIMMED Fresh 10-12#
Fresh 12-14# 1.0 84.00 84.00 Fresh 14-16#
14.0 85.50 - 87.00 85.89 Fresh 16-18# 2.0
83.50 - 84.00 83.75 Fresh 18-20# 76.25
76.25 C Fresh 20-25# SKINLESS,
SQUARED Fresh 9-11# Fresh 11-13#
Fresh 13-15# Fresh 15-17# SKINLESS,
CENTER CUT Fresh 8-10# Fresh 10-12#
Fresh 12-14# Fresh 14-16# PORK
TRIMMINGS/BONELESS PROCESS-
ING PORK (CHEMICAL LEAN)
**ABP:Combo 42% Frsh = 25.00 - 26.00

25.25 **ABP:Combo 72% Frsh = 36.00 -
39.00 37.52 **ABP:Combo Bnls Pic Frs =
40.00 - 41.00 40.43 **ABP:Combo Jowl
Frsh = 24.00 24.00 Lds Price Range Wghtd
Avg. Combo 42% Fresh 13.0 26.50 - 28.00
26.90 Boxed 42% Frozen Combo 72%
Fresh 25.0 37.50 - 40.50 39.24 Boxed 72%
Frozen 5.0 46.00 46.00 BONELESS
PICNIC MEAT Combo 72% Fresh 7.0
42.00 - 43.00 42.43 Boxed 72% Frozen 6.0
49.50 49.50 SKINNED JOWLS Combo
Fresh 1.0 25.50 25.50 Boxed Frozen FAT,
VISUAL TRACE OF LEAN Combo Fresh
1.0 21.00 21.00 Boxed Frozen TRIM, VIS-
UAL TRACE OF LEAN Combo 12-16%
Fresh 1.0 17.00 17.00 Boxed 12-16%
Frozen

**Adjusted Base Price = Weighted aver-
age price for non-value added product cal-
culated by subtracting the packer's value
differential from the reported price of
value-added product.

Specifications for all reported cuts avail-
able upon request.

STANDARD ADJUSTMENTS FOR
CONVERTING TO VACUUM BASIS
Loins (13-23#s): Butts (4-9#s): Vapack :
report basis Vapack : report basis Gas Pak :
minus \$2.00 Gas Pak : no price differential
Paper : minus \$5.00 Paper : minus \$3.00
Combo : minus \$6.00 Combo : minus
\$4.00 Spareribs: Adjustments for Trim -
Vapack : report basis Bone-in Center Cut
Loins: Polywrap: minus \$7.00 False Lean
Off : basis Tenderloins: False Lean On :
minus \$5.00 Vapack : report basis Bone-
less Center Cut Loins: Polywrap: minus
\$10.00 1/4" Trim : report basis 1/8" Trim :
add \$6.00

ABCDE after quotes represents days
since last actual market test. Quotes are
dropped after 5 days of no test or before if
they no longer reflect current market
conditions.

New Holland Sales Stables

Report Supplied By USDA
Monday, March 6, 1999

| | Calves | Sheep | Goats |
|-----------|--------|-------|-------|
| Today | 190 | 619 | 1100 |
| Last Week | 201 | 865 | 1888 |
| Last Year | 193 | 760 | 1211 |

CALVES: COMPARED TO THURS.'S
AUCTION, VEALERS STEADY TO 5.00
LOWER. SLAUGHTER CALVES

STEADY, INSTANCES 5.00 LOWER ON
WIEHTS OVER 500 LBS. DEMAND
GOOD FOR HOSLSTEIN BULLS AND
HEIFERS TO RETURN TO FARM.
BULLS 20.00-30.00 LOWER THAN
THURS.'S HIGHER MARKET. SMALL
SUPPLY HEIFERS STEADY,
ALTHOUGH TOP CALVES NOT
TESTED.

VEALERS: GOOD AND CHOICE
70-110 LBS. 25.00-40.00. STANDARD
AND LOW GOOD 60-90 LBS.
11.00-22.00.

SLAUGHTER CALVES: GOOD AND
CHOICE 250-350 LBS. 80.00-110.00;
450-700 LBS. 60.00-80.00.

RETURNED TO FARM: HOLSTEIN
BULLS 85-125 LBS. 110.00-142.00.
PLAINER-TYPE BULLS 80-120 LBS.
70.00-110.00. HOLSTEIN HEIFERS
COUPLE 80-120 LBS. 300.00-340.00.
PLAINER HEIFERS 75-100 LBS.
200.00-290.00.

SHEEP: SLAUGHTER LAMBS
STEADY. SLAUGHTER EWES AND
AGES SHEEP FIRM TO 5.00 HIGHER.

SLAUGHTER LAMBS: NEW CROP
CHOICE AND PRIME 2-3 40-70 LBS.
125.00-175.00; 70-100 LBS.
110.00-125.00. WOOLED CHOICE AND
PRIME 2-3 80-110 LBS. 100.00-110.00;
110-140 LBS. 80.00-86.00.

SLAUGHTER EWES: GOOD AND
CHOICE YEARLINGS AND 2 YEAR
OLDS 60.00-80.00. UTILITY AND
GOOD 1-3 40.00-65.00. AGED BUCKS
150-300 LBS. 40.00-65.00.

GOATS: BY THE HEAD, LA'GE
BILLIES 100.001-30.00, EW
130.00-160.00, SMALL AND MED.
75.00-100.00, CHOICE AND PRIME
MUTTON 75.00-100.00, LARGE NAN-
NIES 60.00-90.00, MEDIUM 40.00-60.00,
CHOICE AND PRIME YEARLINGS
50.00-90.00, CHOICE AND PRIME KIDS
50.00-80.00, GOOD 20.00-50.00.

Grantsville Livestock

Grantsville, Maryland
Report Supplied by Auction
Saturday, March 4, 2000

STOCK STEERS AND BULLS 200-
500 LBS. 50.00-104.00.
STOCK HEIFERS 45.00-91.00.

SLAUGHTER STEERS GOOD TO
CHOICE UP TO 68.00, MEDIUM TO
GOOD 45.00-58.00.

HOLSTEIN STEERS GOOD 36.00-
53.00, LIGHT 35.00-55.00.

SLAUGHTER HEIFERS GOOD TO
CHOICE 56.00-66.00, MEDIUM TO
GOOD 50.00-55.50.

BULLS HEAVY 35.00-50.00, LIGHT
35.00-60.00.

COWS UTILITY HOLSTEINS
32.00-42.50, CANNERS 25.00-33.00,
CULLS 22.00 AND DOWN

BOB CALVES 30.00 AND DOWN.

HOLSTEIN BULL CALVES
RETURN TO FARM 90-120 LBS. UP
TO 110.00.

HOLSTEIN HEIFER CALVES
RETURN TO FARM UP TO 200.00.

BEEF CROSS CALVES RETURN
TO FARM UP TO 145.00.

HOGS TOP QUALITY UP TO 46.00,
HEAVY UP TO 42.00, LIGHT 20.00-
32.00, FEEDER PIGS BY HEAD UP
TO 50.00.

SOWS 20.00-40.00.

MALE HOGS 5.00-20.00.

LAMBS 70-85 LBS. UP TO 120.00,
85-125 LBS. UP TO 110.00, 30-60 LBS.

UP TO 130.00, CULLS UP TO 65.00.

SHEEP UP TO 47.00.

GOATS LARGE 60.00-150.00,
MEDIUM 40.00-75.00, SMALL 20.00-
50.00, ALL BY THE HEAD.

Dewart Livestock

Dewart, Pa.
Report Supplied by Auction
Monday, March 6, 2000

STEERS: 50.00-64.50.
HEIFERS: 50.00-60.00.
GOOD COWS 30.00-42.00.
CANNERS AND CUTTERS 20.00-
30.00.

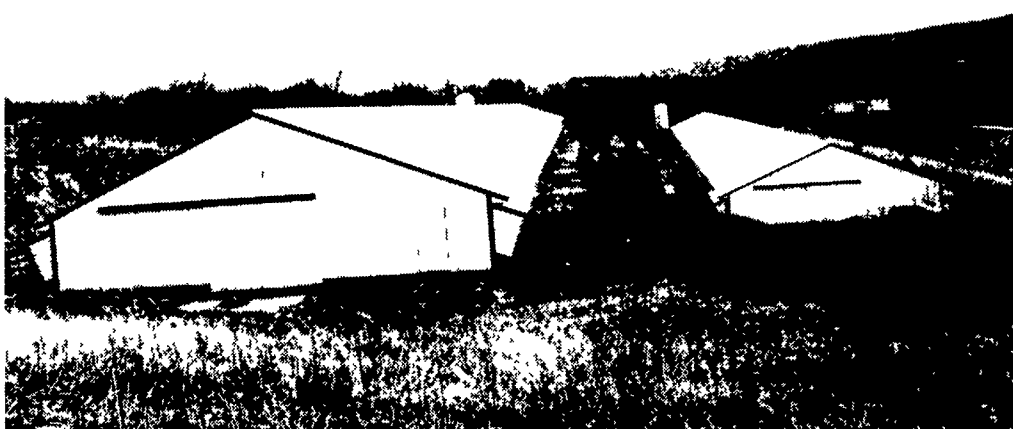
BULLS 1 AT 46.50.
VEAL 90-190 LBS. 120.00-300.00, 70-
90 LBS. 35.00-120.00.

HOGS 38.00-39.50.
SOWS 22.00-39.00.

FEEDER PIGS 14.00-36.00 PER
HEAD.

Farmer Boy Ag Systems Inc.

Thanks to George Bixler Family of Hegins, PA



This unit features...



A Division of (BSI)
Watering Systems



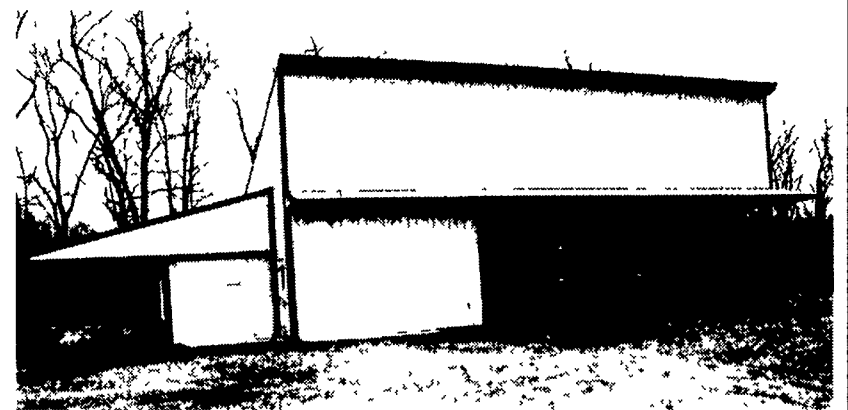
Shenandoah
Brooders



A Division of (BSI)
Ventilation



A Division of (BSI)
Feed Bins & Augers



Pennfield has new "Grower Contracts" available. Please contact us for more information.



24 Hour
Service

Farmer Boy Ag Systems Inc.

410 East Lincoln Avenue, Myerstown, PA 17067
717-866-7565 • 1-800-845-3374

3/11/00

Hours:
Mon.-Fri. 7 to 5:30
Sat. 7:30 to Noon

Poultry contract provided by



THE
Right
CHICKEN

800-839-1464