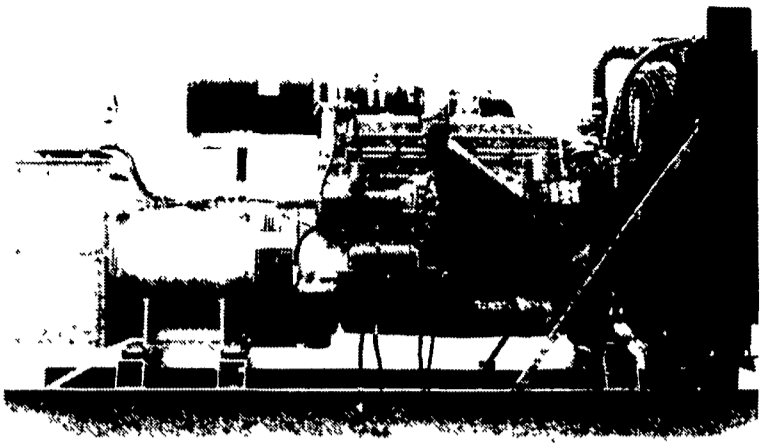


# GENERATORS



**MARTIN ELECTRIC PLANTS • Manufacturer of:**  
**DIESEL, LP GAS, NATURAL GAS, PTO**  
**Automatic & Manual Start Systems**  
**USED UNITS ALSO AVAILABLE**

*Call Us For All Your Generator Needs!*

## MARTIN ELECTRIC PLANTS

280 Pleasant Valley Rd., Ephrata, PA 17522-8620  
**800-713-7968**

**Tel: 717-733-7968 Fax: 717-733-1981**



**1998 MF 8150 DYNA SHIFT,**  
 4 Hrs., 18-42 - **\$58,000**  
 1 Year Warranty Available

- MF 298 w/Loader.....\$11,600
- MF 253, 4x4 w/Loader.....\$16,500
- JD 7800, 4x4, PS.....Call
- JD 7600, 4x4, Cab & Air, PS.....\$37,000
- JD 4050, 4x4, Cab & Air, PS....\$28,000
- JD 2750, 4x4, Cab & Air.....\$18,000
- Deutz DX160, 4x4, Cab & Air.....Call
- Deutz Allis 6250, 4x4, Loader...\$11,500
- AC D12, 3 Pt., Pwr. Steer.....\$3,800
- NH 5635, 4x4, ROPS.....Coming In
- NH 1725, 4x4 w/Loader.....Call
- Case IH 7150, 4x4, PS w/Duals.....Call
- Case IH 5250, 4x4, **SOLD** Air, PS. Coming In

*Financing Available*

**LLOYD M. BURKHOLDER**

170 Cocalico Creek Rd., Ephrata, PA 17522  
**717-859-6616**



**Oliver 1650 gas, wide front, nice, clean chore tractor, 65 HP.....\$3,500**

- Also Available:**
- JD 6030, cab, duals, PTO, 175 hp, nice western unit, no 3pt.....\$7,500
  - JD 2550, 8 Speed, 65 HP.....\$9,000
  - IH 1486, CAH, new T/A, 3pt, 540/1000, 145 HP, duals, 3,450 hrs.....\$10,850
  - Farmall 300, narrow front, fast hitch.....\$2,300
  - IH Hydro 84 w/cab, 2 owners, 4,000 hrs, yellow.....\$5,800
  - JD 1010, utility, gas, 1,900 hrs.....\$3,250
  - IH 1086, 130 HP, dual hyd, 5,200 hrs, CAH, clean.....\$10,500

- IMPLEMENTS**
- Manure Spreader: NH 518 w/new sides, 2 beaters exc.....\$1,500
  - Manure Spreader: NI 245 w/recent chain and gate. Field ready.....\$1,500
  - Manure Spreader Chains, new NH 510-518....\$200
  - Loader Attachment: HD Allied w/2 buckets. Solid mount/ JD 4020 etc.....\$300

*Financing & Trucking Available*  
**410-833-9091**  
 Visit our website: [www.isez.com/belmontfarm](http://www.isez.com/belmontfarm)  
 E-mail us at [BELTRACK@aol.com](mailto:BELTRACK@aol.com)

<b>NH 316, 75 Thrower, 1 Owner, RBP</b>	<b>JD 327, 30 Ejector, Sharp, Excellent Paint, RBP</b>	<b>JD 328, 40 Ejector, Electric Controls</b>
<b>NH 316, 70 Hyd. Thrower, Super Sharp Paint</b>	<b>JD 4020, WFE, cab, super nice</b>	<b>NH 316, 70 Hyd. Thrower, Hyd. Tension, Bright Paint</b>
<b>NH 630 Round Baler, Like New</b>	<b>NH 311, 70 Hyd. Thrower, RBP, Super Nice</b>	<b>Woods MD184, 7' Rotary, Like New</b>

**QUALITY HAY EQUIPMENT**  
 One of Pa's Largest Selections

**BALERS**

- \* RBP Rebuilt Plunger (new pin bushings rollers shld blocks)
- JD 327 30 ejector RBP Super Nice \$5,750
- JD 328 40 ejector elec controls RBP \$7,000
- JD 328 40 ejector RBP \$6,000
- JD 336 30 ejector field ready RBP \$3,000
- JD 241 chute field ready \$1,250
- JD 346 30 ejector (2) Coming In
- JD 336 30 ejector (3) Coming In
- JD 30 ejector complete \$500
- JD 141 241 and 336 parts balers CALL
- NH 316 Baler super sweep 75 E RBP sharp \$7,450
- NH 326 baler 70 hyd thrower, exc Coming In
- NH 316 baler 70 hyd thrower super nice \$6,900
- NH 316 baler hyd tension 70 hyd thrower sharp \$7,400
- NH 311 baler 70 hyd thrower RBP super nice \$6,500
- NH 276 baler chute field ready \$2,500
- NH 276 baler super sweep, 54 thrower \$3,200
- NH 276 Baler super sweep 54 thrower \$3,000
- NH 276 baler super sweep 54 thrower \$2,800
- NH 276 baler super sweep 54 thrower \$2,800
- NH 320 baler, super sweep 75 thrower Coming In
- NH 320 baler super sweep, 70 thrower Coming In
- NH 282 super sweep hyd tension, hi cap \$1,800
- NH 275 Baler super sweep, chute clean \$1,800
- NH 75 Pan Thrower, complete off of 315 \$600
- NH Hydraulic tension unit off of 320 \$400
- NH 68 69 super 69 parts balers CALL
- Case 330 AC 444 IH 46 IH 47 parts balers CALL

**ROUND BALERS**

- NH 630 4x4 bales like new, new belts \$8,000
- NI 484 5x4 bales clean rust fr Wisc. baler \$6,000

**DISCINES**

- JD 1470 11 comp rebuilt new rolls new cutterbar \$9,000
- JD 1460 9 ex rolls sharp paint our own \$7,500
- Vicon KM321 9 very good rolls ex cond \$4,750
- Vicon KM321 9 good rolls v g cond \$4,200
- Kuhn IC300G, 8 540 or 1000 RPM \$5,000
- Deutz Allis RM80 Discbine Coming In

**HAY BINES**

- NH 489 9 excellent rolls bright paint \$3,500
- JD 1219 9 mechanics special CALL
- NH 467 7 excellent rolls good paint \$2,000
- NH 469 9 good rolls \$1,250

**MISCELLANEOUS**

- Wood Thrower Wagons, NH 8 ton gears flotation tires excellent 6 available \$1,200
- JD 4x16 plow Excel \$600
- Oliver 3x16, 3 pt, plow excel cond \$550
- Farmco 18 steel side throw w gns, 8 ton, new \$2,000
- Farmco 8 horse feeder new \$350
- Sunflower 12 folding offset disc \$3,000
- JD 8300 grain drill 18x7, grass box, exc \$3,000
- JD 7000 6RN no till dry fert & insect \$5,500
- Kinze hyd markers exc condition \$5,500
- Brillion 9 cultipacker rebuilt, new shaft & bearings \$600

**TRACTORS**

- JD B Tractor, 1941 raised letter rear, ex paint new tires \$2,500
- JD 4020 WFE dual hyd, cab super nice \$12,000
- JD 4020 WFE, dual hyd, excel cond \$9,000
- JD 4020 Turbo, WFE, dual Hyd \$9,000
- JD 3010 TFE gas roll bar, very nice \$5,000
- Farmall Super C w/McCormick loader \$2,000
- Farmall MD NFE, Runs Excel \$3,000
- Farmall H 1941, Spoke Wheels, Exc \$1,800
- Farmall H Rem Hyd Dual Fuel, Exc \$1,600
- Farmall Cub, 1948, sickle bar mower \$1,900
- Farmall A WFE, good paint, runs ex \$1,800
- International Cub, belly mower, runs ex \$2,700
- Farmall H, 1944, excellent rear rubber \$1,400
- Farmall Cub, runs excellent \$1,800
- Ford 9N, good paint & rubber, runs excel \$2,250

**MOWERS**

- Woods HD 315 15' Batwing, V.G condition \$5,000
- Woods MD 184, 7' rotary, 3 ph, like new \$2,000
- NH 451 sickle bar 9 bar, no wds, v g cond \$1,500
- Heavy duty 6 rotary mower, 3 PH, stump jpr \$750

**TRACTORS**

- JD B Tractor, 1941 raised letter rear, ex paint new tires \$2,500
- JD 4020 WFE dual hyd, cab super nice \$12,000
- JD 4020 WFE, dual hyd, excel cond \$9,000
- JD 4020 Turbo, WFE, dual Hyd \$9,000
- JD 3010 TFE gas roll bar, very nice \$5,000
- Farmall Super C w/McCormick loader \$2,000
- Farmall MD NFE, Runs Excel \$3,000
- Farmall H 1941, Spoke Wheels, Exc \$1,800
- Farmall H Rem Hyd Dual Fuel, Exc \$1,600
- Farmall Cub, 1948, sickle bar mower \$1,900
- Farmall A WFE, good paint, runs ex \$1,800
- International Cub, belly mower, runs ex \$2,700
- Farmall H, 1944, excellent rear rubber \$1,400
- Farmall Cub, runs excellent \$1,800
- Ford 9N, good paint & rubber, runs excel \$2,250

**717-235-1766** Financing Available  
 3 Miles north of Shrewsbury Pa on White Oak Road Call for Directions  
 Open Saturdays & Sundays 8 a.m. - 2 p.m.  
 Weekdays 8 a.m. - Noon or By Appointment

## KUBOTA KUBOTA KUBOTA KUBOTA KUBOTA KUBOTA KUBOTA KUBOTA KUBOTA

### ERB & HENRY EQUIP., INC. SINCE 1898

**PARTS - SERVICE - SALES - RENTALS**  
 Case IH Parts & Service • WE SERVICE ALL MAKES  
 Check our Parts Prices before you buy!

**New Model Kubota M120 Cab, 4WD, 120 HP, 16 Spd., Power Shift, Short Turning Radius**

- Kubota • Kub Cadet • Befco Equip • Woods • Vicon Spreaders
- Howard Price • Grasshopper • Brouwer Turf • John Bean Sprayers • Meyers Snow Plows

**DEMO/LEASE - Kubota Tractor**  
 Call For Special Price  
 • M5400 4WD w/Loader, 54 HP  
 • M8200 4WD w/Loader, 82 HP • M120 4WD, 120 HP

**NEW KUBOTA TRACTORS IN STOCK:**  
 13.5 HP to 120 HP

**TOWNSHIP SPECIAL UNIT Available**  
 Lease - Rent or Buy  
 Kubota M9000, Cab, 4WD  
 w/14 ft. Side Mount Boom Mower

### NEW, USED, RENTAL & DEMO EQUIPMENT

**COMPACT TRACTORS:**

- Kubota L225 2WD Diesel, 20HP, ROPS, Turf Tires, 3pt. Hitch, Woods L59 Belly Mower
- Kubota B7100 4WD, ROPS
- Kubota L35 TLB, 800 Hrs., Aux. Valve, Off Rental.....\$24,500
- Ford 1900 2WD Diesel, Turf Tires, 3 pt. Hitch, 26 HP, Nice Shape
- IH Cub Low Boy w/60" Deck Yellow & White, Late Model, 12 Volt System Turf Tires, Runs Great
- IH 154 Cub Low Boy w/60" Rotary Mower
- IH 154 Cub Low Boy w/5 Ft. Sickle Bar
- IH 154 Cab Low Boy 3 pt. Hitch, 484 Mower, Mechanic's Special \$1,595
- IH Cub Low Boy w/60" Deck
- Cub Cadet 7275, 27 HP, 4WD, Hydro, Loader, 6 ft. Belly Deck (Like New).....\$19,900 \$17,900

**TRACTORS:**

- Kubota M4030 SU 2WD w/Loader, Nice Shape
- Case IH 385D Lo-Profile, Big Turfs, 3 Pt.....\$6,995
- Case 380 Loader Tractor w/ROPS, 3 pt. hitch, 540 PTO & Canopy
- Ford 871, Diesel Select-O-Speed w/Ford Loader, Engine Bad, Trans. Good, Tin Work & Loader Excellent
- Ford 2110 Gas w/Turf Tires
- Ford 3000, Gas w/Turf Special
- MF 165 Gas w/Loader
- Oliver 1550 Gas Wide Front, Over & Under (Engine Overhauled)

**MISCELLANEOUS:**

- NI 15 Manure Spreader, PTO Drive, Real Nice
- 72" Loader Bucket w/Pallet Fork, Fits JD 175 Loader
- Kwik Way 6 ft. Blade, Hyd. Angle, Fits 200 Series IH/Case IH
- Kubota L355 Front Mount Snow Blower
- Sauder 7 ft. Quik-Tach Blade fits Fords
- Moreysville 9' Mechanics Truck Tool Body w/Roof.....\$250
- Used Meyers Snow plows
- Diamond 8-1/2 ft. V-Plow.....\$750
- Befco 4-Star Tedder, New.....\$3,500 \$3,200
- Winco MD45 Stand-by Generator on Trailer, Remote Start, JD Diesel, Will Start 15HP motor, 3700 hrs., like new.....\$9,500
- 10 ft. Road Plow 2/JD Quick Attach Loader Brackets
- New Case IH 8521 Bale Thrower - Fits Case IH 8540 or Hesston In-Line Baler

**TILLAGE:**

- Hugo 10 ft. Harrow Roller w/Hyd Transport.....\$1,500

**COLLECTOR TRACTORS:**

- 1959 Ford Pickup, 6 Cyl., Stick, Orig. Engine, Completely Restored, Black.....\$10,900 \$6,500
- Ford 9N 2 Spd., Ex. Cond.....\$2,495
- AC WD 45 Loader Ex. Tin.....\$2,595
- MF T020 Engine Overhauled, Nice Shape.....\$4,200

**COMMERCIAL TURF EQUIP.:**

- (2) Kubota F2400 4WD, 72" Side Discharge Mower
- Kubota GF1800 2 WD, 60" Front Deck
- FMC DM20 E200 FEK Dual Wheel Turf Sprayer, Like New (1990) \$3,995
- Brouwer Turf Equip. 5 Gang Vertical Mower PTO Drive Demo/Rental
- Brouwer Turf Equip. 5 Gang 5 Blade Reel Mower PTO Drive Demo/Rental
- Brouwer Turf Equip. TR130 Turf Roller Hydro Drive 828 Lb. Wet Demo
- Howard Price 727 Diesel w/72" Rotary Mower, 550 Hrs.
- Howard Price 727 Diesel w/72" Rotary Mower.....\$4,895
- Gravelly Pro-Master 20, 60" Front Deck
- National 5 Gang Reel Mower w/11 HP Engine Pull Type Used
- Lely Pull Type Fertilizer Spreader (Like New).....\$850
- 100 Gal. Skid Sprayer Wisconsin, Engine FMC, Hi-Pressure Piston Pump.....\$1,000
- Used Cub Cadet Parts in Stock •
- Used Cub Low Boy - Parts •

**FULL SERVICE DEALERSHIP - FACTORY TRAINED TECHNICIANS**  
 Diesel Engine Rebuilding & Repair • Diesel Pump & Injection Repair  
 Hydraulic & Hydrostatic Transmission Repair • Welding & Fabrication • Tire Service  
 ROAD SERVICE AVAILABLE • HAULING - Tractor Trailer on Rollback  
 KUBOTA • FARMALL/IH • CASE • CASE/IH • CASE SKID LOADER • CUB • CUB CADET

**ERB & HENRY EQUIP., INC.**  
 One Mile North of Boyertown, New Berlinville, PA  
 Hours: Daily 7:30 to 5; Sat. 7:30 to 3  
**PICK UP & DELIVER 610-367-2169 WE SHIP UPS DAILY**  
**Fax 610-367-6715**

KUBOTA KUBOTA KUBOTA KUBOTA KUBOTA KUBOTA KUBOTA KUBOTA