

## Public Auction Register

Closing Date Monday 5:00 P.M.

of each week's publication

Internet Sale Register will be updated every Sat. at 2:23 P.M.

### ATTENTION Auctioneers

All sales register info needs complete address, street, town, county & state.

SAT APR 29 - Public Sale of Household beef cattle farm machinery several JD tractors Lee Casner Blain Pa owner Kevin M Wickard auct

SAT APR 29 - 9AM Real Estate personal property antiques 2404 Main St. Narvon Caernarvon Twp Lanc Co By Elmer & Esther Hertzler Horning Farm Agency Inc 610-286 5183

SAT APR 29 9AM Farm machinery farm tools accessories household goods antique furniture & collectibles At 2524 Armstrong Valley Rd Halifax Pa

Clyde E George, owner David Deibler, Ed Shoop, aucts

SAT APR 29 - 9AM Brecknock Builders, 355 Panorama Drive Bowmansville, Pa Full line of new & used inventory equipment & tools Steve Petersheim, auct

SAT APR 29 - 10AM Spring Heifer Sale Belleville Livestock Market Belleville Pa

SAT APR 29 -11AM Mattoon Road Prattsburgh (Steuben Co) New York Nistock's Complete Holstein Dairy Herd Dispersal Arrng Auctions Inc

### MAY 2000

TUES, MAY 2 - Fat Cattle Sale, Carlisle Livestock Market, Inc 548 Alexander Spring Road, Carlisle, PA

TUES MAY 2 - 7:45PM Feeder Cattle Sale Carlisle Livestock Market Inc 548 Alexander Spring Rd., Carlisle PA

WED MAY 3 9AM Lumber & Building Supplies To be held at Wolgemuth Auction 109 N Maple Ave Leola Lanc Co Pa 717-656 2947

WED MAY 3 - 6:30PM Winross Hess, Farm Trac & Toys To Be held at A&C Diffenbach Auction Inc 100 W Jackson St New Holland Lanc Co Pa 717-355 7253

FRI MAY 5 5PM & SAT MAY 6 - 8:30AM 5th Annual Steam-O-Rama Spring Consignment Auction For Info Charles Stillinger 717-755-8312 or Chuck Noonan 717 755-9465

SAT MAY 6 - 8:30AM - Horse 10AM Mel's Stables 834 Wallace Rd New Holland, PA Mel Hoover Auctioneer

SAT MAY 6 -9:30AM Annual Consignment Auction at Walnut Barn Equip Shade Mt Rental 7

miles S of Mifflin Along Rt 35 Bryan D Imes, auct

SAT MAY 6 - 10AM Heifer Sale, New Holland Sales Stables, 101 W Fulton St New Holland Pa

SAT MAY 6 - 12PM 6 acre w/beautiful home approx 10 miles W of State College Pa Centre Co Auct Ron J & Ron S Gilligan #AU-339-L & #AU3430-L 814-237-0189

TUES MAY 9 - 7:45PM Feeder Cattle Sale Westminster Livestock Auction

FRI MAY 12 - 9AM Tractors Farm Eq & Supplies To Be held at A&C Diffenbach Auction Inc 100 W Jackson St, New Holland, Lanc Co Pa 717-355-7253

FRI, MAY 12 - 1PM State Graded Feeder Pig Sales Carlisle Livestock Market Inc 548 Alexander Spring Road, Carlisle, Pa

FRI MAY 12 - 6 PM Feeder Sale, New Holland Sales Stables 101 W Fulton St, New Holland, Pa

FRI MAY 12 - 7PM Dairy Sale Middleburg Livestock Auction Sales Inc Middleburg, Pa

SAT MAY 13 8:30AM Charles J Henninger Estate Auction at 842 Shippen dam Rd Millersburg

## Dairy and Livestock Sales

Pa Antique furniture & collectibles boat motors guns, household goods farmyard equip, woodworking shop equip, power tools lumber scrap piles David Deibler, Ed Shoop aucts

SAT MAY 13 - 9AM At 350 Smithville Rd New Providence, Pa 3 1 acre farmette auto, sleigh, antiques By Violet V Albin Estate Probst Family aucts 717-464-3700

SAT MAY 13 - 9AM Real estate, furniture, personal property, at 3087 Kissel Hill Rd, Litz, Manheim Twp By Howard A & Connie 3 Good Aaron E Martin Auction Service

SAT MAY 13 - The Point of Excellence Sale, Bloomfield, NY

hosted by Vintage Point Holsteins The Cattle Exchange

TUES, MAY 16 - Fat Cattle Sale, Carlisle Livestock Market, Inc, 548 Alexander Spring Road, Carlisle, PA

TUES MAY 16 - 7:45PM Feeder Cattle Sale Carlisle Livestock Market, Inc 548 Alexander Spring Rd, Carlisle, PA

WED MAY 17 & THURS, MAY 18 - 8:30AM Wed Lawn & Garden Tractors, misc items Thurs Visc items, tres, posts, etc Farm Equip & tractors 6 miles S of Chambersburg, Pa 1 mi E of manon, just E off I-81 at Marion along Rt 914 Marion Auction Service

FRI MAY 19 - Feeder Sale 7 PM

Middleburg Livestock Auction Sales, Inc, Middleburg, Pa

FRI MAY 19 - 7 PM Horse Sale, New Holland Sales Stables, 101 W Fulton St, New Holland, Pa

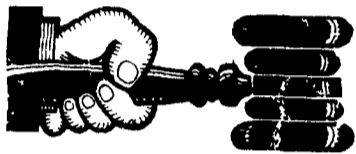
SAT MAY 20 - 9AM Tools and related items Roy Blauch Estate, 7040 Bates Drive, Anville, Pa Harry H Bachman, auct

TUES, MAY 23 - 9AM Quilt, Craft & Buggy To Be held at A&C Diffenbach Auction Inc, 100 W Jackson St, New Holland, Lanc Co, Pa 717-355-7253

WED, MAY 24 - 9AM Quilt & Craft To Be held at A&C Diffenbach Auction Inc, 100 W Jackson St, New Holland, Lanc Co, Pa 717-355-7253

## NOTICE!!!

Look For Public Sales Scheduled Past Deadline On Second To Last Page Of Section A



### AUCTIONEER'S DIRECTORY

Call 717-626-1164 to list your auction service.

### NOTICE

To assure that your Public Sale appears in the Public Sale Section we must have your advertisement by 5 PM Tuesday of each week's publication.

Complete Auction Service

**ALL POINTS AUCTION CO.**

LEBANON PA 717-270-4555

### Professional AUCTIONEERING

MARTIN AUCTION SERVICE

410 W. Church Rd. Ephrata, PA 17522 (717) 733-3511

Real Estate • Farm Equipment • Antiques • Household Goods

It doesn't cost to use our Auction Service...It Pays. CALL TODAY!!

### John D. Stauffer Auctioneers

1484 Mountain Road, Manheim, PA 17545

Fulltime Courteous Professional Auction Service Since 1976

Real Estate • Farm Equipment • Antiques Personal Property • Livestock

Phone 717-665-5099

### HFA HORNING FARM AGENCY, INC.

Merle Eberly AU-2417-L • Alvin Horning AU-0433-L Elton Horning AU-0434-L

Morgantown, PA (610) 286-5183

>> Courteous Real Estate Services

>> Professional Auctioneers

>> State Certified Appraisers

>> Specializing in Farms and Land

### KREIDER, KLINE & GOOD

AUCTIONEERS

COMPLETE PROFESSIONAL AUCTION SERVICE REAL ESTATE - FARMS & RESIDENTIAL PERSONAL PROPERTY - ANTIQUES - FARM STOCK SALES - LIQUIDATIONS

RANDAL V. KLINE AUCTIONEER-REALTOR 717-733-1006

LLOYD H. KREIDER AUCTIONEER 717-786-3394

ROY E. GOOD, JR. AUCTIONEER (717) 445-4309

### MEL'S STABLE

S E L E C T E D



C O N S I G N M E N T

DRIVING, WORK HORSE SALE

SAT., MAR. 18, 2000 - 10:00 AM

NOTICE: NEW SALE TIME 10 AM

HORSES HITCHED AT 8:30 A M SHARP SALE HELD AT 834 WALLACE RD., NEW HOLLAND PA DIRECTIONS FROM RT 23 IN NEW HOLLAND GO SOUTH ON BRIMMER AVE GO 2 MILES SOUTH ON NEW HOLLAND ROAD TO HILL RD TURN LEFT ON HILL RD PROCEED 12 MILES TO SALE ON THE LEFT FROM RT 340 EAST OF INTERCOURSE TAKE NEW HOLLAND RD 2 5 MILES TO HILL RD RIGHT ON HILL RD TO SALE ON LEFT

APPROX. 75 HEAD OF STANDARD BRED HORSES APPROX. 50 HEAD OF SADDLEBRED HORSES

- 1 Load Driving Horses for Elam Stoltzfus
- 1 Load Driving Horses for Christ Z. Stoltzfus
- 1 Load Driving Horses for Jerome Wanner
- 1 Load Driving Horses for Stephen Stoltzfus
- 1 Load Driving Horses for Sam Esh, Jr

PLUS MANY MORE HAND PICKED TOP QUALITY HORSES!! DON'T MISS THIS SALE!!! IF YOU ARE IN NEED OF A HORSE, COME AND FIND THAT SPECIAL HORSE.

### MEL'S STABLE

OWNER - MEL HOOVER

PHONE - HOME - 717-354-8397

BARN - 717-354-6431

AUCT. MEL HOOVER AU0031111L

NOT RESPONSIBLE FOR ACCIDENTS

FOOD ON PREMISES

Next Horse Sale: April 1, 2000

### ABSOLUTE FERTILIZER EQUIPMENT & TRUCK AUCTION (EXCESS EQUIPMENT)

TUES., MARCH 21, 2000 10:00 AM EST

TARBORO, NORTH CAROLINA ROYSTER-CLARK, INC.

CHECK OUT OUR WEB SITE FOR EQUIPMENT ADDITIONS TO THIS SALE [www.delpeterson1.com](http://www.delpeterson1.com)

LIST IS SUBJECT TO CHANGE MORE EQUIPMENT BY SALE DATE!!!

SALE SITE: Royster - Clark facilities located at 1600 W. St. James, Tarboro, NC.

FLOATERS: Liquid & Dry, full & Semi float, TRUCKS: Liq/Dry tenders, flatbeds, diesel/gas engines, PICKUPS: 1 tons, diesel/gas, 4x4s, flatbeds

LOADERS/FORKLIFTS AND TRACTORS: Bobcat 743 & 853, Case 480C, Waldon loader, TCM forklift, RELATED EQUIPMENT: NH3 nurse tanks and applicators, Stainless steel, aluminum fbg and poly tanks, Liquid spray units, tires, Transport trailer, Liquid nurse trailers and storage tanks, Nitro applicators, applicators.

Note: Additional related items by sale date.

### OTHER ROYSTER CLARK AUCTIONS:

Wednesday, March 29th - Mt. Sterling, OH

Friday, March 31 - Terre Haute, IN

Check out details on the internet:

[www.delpeterson1.com](http://www.delpeterson1.com)

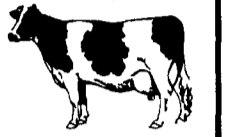
For Complete Brochure And Details, Write Or Call: Del Peterson & Assoc., 322 W. County Rd. T, Fremont, NE 68025 800-492-9090 or 402-721-4388 Fax: 402-721-4583

EMAIL: [auction@tvsonline.net](mailto:auction@tvsonline.net)

WEBSITE: [www.delpeterson1.com](http://www.delpeterson1.com)

LICENSE # AU09000176

### NEW HOLLAND SALES STABLES, INC.



New Holland, Pa.

Located 12 Miles East of Lancaster, just off Rt. 23

### DAIRY SALE WEDNESDAY, MARCH 8, 2000

10:00 AM

OPEN BRED HEIFERS

12:00 NOON

BULLS, FRESH COWS, SPRINGERS

#### Weekly Consignors

- Merle Breneman • Leroy Smucker • Jim Hostetter
- Marvin Eshleman • Dale Hostetter • Daniel Z. Stoltzfus

### NORTHERN PA HERD SELLS, COMPLETE DISPERSAL

45 Cows and Bred Heifers, Year Around Herd--- They Milk In A Parlor, They Used A.I. For Years, Recently They Use A Top Herd Bull--- 3.8% Butterfat, S.C.C. Okay, and Herd Will Go Home and Do Well For New Owner---

This Herd Has Been Established For Many Years--

Owner--- IRA ALTEMOSE and SONS

--- BILL and LARRY ---

### LOAD OF CANADIANS SELL FOR LEROY SMUCKER

Several Fresh Milking Up To 122 Lbs.--- Popular Sires--- Comestar Lee, Prelude, Lindy, Milan 3 Yr. Old Sells That Is To Be Really Fancy--- Also, LeRoy Will Have Some Top Springers On The Load---

### MILKING EQUIPMENT SELLS

Like New Sputnik Top Condition!!

Sells At 1:00 PM, Right Before Cow Sale---

### --- 16 SPRINGERS SELL FROM CANADA ---

--- Some Will have Reg. Papers---

#### Note To Consignors!

Please send all information along with your cattle Tues. Fresh Date, Breeding Dates, Milk Weights, TB & Blood Test charts with your trucker.

Sale Managed By

New Holland Sales Stables, Inc.

Barn 717 354 1311 Fax 355 0706 Home 717 397 5538

Norman & David Kolb, Mgrs. 61L

### SPECIAL WORK & DRIVING HORSE AUCTION

Middleburg Livestock Auct. Sls., Inc.

SATURDAY, MARCH 11, 2000

Tack 8:30 AM Horses 11:00 AM

All Out Of State Horses Need Coggins Test & Health Chart.

Auction Located along Rt. 522 3 miles East of Middleburg, PA, 5 miles West of Selinsgrove, PA

\* WORK HORSES \* WORK HORSES \*

Load of Work Horses Consigned by:

Ward Wright, Kentucky - Other Southern Consignors -

M.L. Bowersox, Livestock - Bill Howard

- Other Local Consignments Welcome -

\* DRIVING HORSES \* DRIVING HORSES \*

Loads of Driving Horses Consigned by:

Noah Hurst, New York - Christ Z. Stoltzfus -

Adam Hoover - Earl Martin - Jerome Wanner

- Other Local Consignments Welcome -

No Commission charged on "top pair" of Work Horses and Highest Priced Driver.

For more info contact: Clarence Shirk 717-656-8793 or Aaron Reiff 570-922-1490 or 570-837-2222

Clarence Shirk, Auctioneer Lic. #002750

Terms: Cash

Trucking Available

Restaurant