

Public Auction Register

Closing Date Monday 5:00 P.M.

of each week's publication

Internet Sale Register will be updated

every Sat. at 2:23 P.M.

ATTENTION Auctioneers

All sales register info needs complete address, street, town, county & state.

SAT APR 15 - 9AM Real estate, personal property and antiques East Nantmeal Twp, Chester Co By Estate of Mildred E Brewer Homing Farm Agency Inc 610 286-5183

SAT APR 15 - 9AM Consignment Auction Rt 522 at village of Wagner 12 miles North of Lewis-town, PA (Mifflin Co) Call Ivan Macknair 717-543 5192 Auct Blaine Rentzel #AU-761

SAT APR 15 - 9AM 5 mi S Turbotville 2 mi N of Washing-tonville off Rt 54 Consignment Sale Benefits Beaver Run School

SAT APR 15 - 9AM Reinholds Fire Co Banquet Hall, Rt 897 Reinholds Antiques and Personal Property for Lester Fritz Art Pannebecker Auction Service

SAT APR 15 - 9AM Real estate, household goods, antiques & riding mower At 233 W Main St, New Holland Lanc Co, Pa For Robert H & Miriam B Newswanger Robert E, Jeffrey R & Michael L Martin, aucts

SAT APR 15 - 9AM Estate of Carrie Klinger, 157 Acre Farm w/4 bedroom house & many good buildings antiques, collectibles, personal property Hassinger & Courtney aucts

SAT APR 15 9AM Tractor, Farm & Orchard Items, Shop Equip & Tools Windmill HH Items Collectibles 1 mi S of Pitman in the Mahantongo Valley, Schuylkill Co, PA Avico E Morgan Owner Mike Deibert, Auct

SAT APR 15 - 9 30AM Farm equip Nelson Gardner and family, Rocky Holstein Farm At Rickingham Fairgrounds Harrison-burg Va Tom M Weaver & Kent Weaver aucts

SAT APR 15 - 10AM Real estate, household goods & misc

Items From Rt 23 in New Hol-land take Brimmer Ave S approx 2 miles to Hill Rd turn left to sale

on right by Martin B & Thelma K Martin Mel Hoover, auct

SAT APR 15 - 11AM Branchport (Yates Co) New York on the Guyanoga Valley Road across from Valley Inn Lawrence McMinn Farm Machinery Retirement Auction Pirrung Auctioneers Inc

SAT APR 15 12PM N Corn-wall Twp Lebanon Co, Pa 2170 Colebrook Rd, Leb Nelson L Ebersole auct

SAT APR 15 - 1PM (Due to Easter) State Graded Feeder Pig Sales Carlisle Livestock Market Inc 548 Alexander Spring Road Carlisle, Pa

TUES APR 18 - Fat Cattle Sale, Carlisle Livestock Market, Inc, 548 Alexander Spring Road Carlisle, PA

Howard County Machinery Auction Annual Spring Consignment Sale

Howard County Fairgrounds

West Friendship, Maryland

March 18, 2000 @ 9:00 a.m.

Now accepting consignments of:

Tractors and farm machinery; construction and landscaping equipment; lawn mowers; carpentry, plumbing and electrical tools; shop tools and equipment; building materials; lumber, windows and doors; trucks and trailers, etc.

Consignments accepted at Fairgrounds Mar. 13 thru Mar. 17, 9 am - 5 pm or call.

Call now for items to advertise. We accept donations for the Make A Wish Foundation.

Visit us at www.gregoryandwarfield.com

GREGORY & WARFIELD AUCTIONS

(410) 489-7200

Cash, check, Visa/MasterCard

10% buyer's premium

Regular auctions every Tuesday evening

starting at 5:00 p.m.

Phil Gregory, (301) 924-2333

Dennis Warfield (410) 489-4920

Roy Gregory (301) 831-5257



PUBLIC AUCTION

of Valuable

TRACTORS - BOBCAT SKID LOADER - FARM EQUIP.

TUESDAY, MARCH 21, 2000

Auction Time: 10:30 AM

Location: 532 Breneman Road, Manheim, PA. From Manheim, Follow Rte. 772 (Manheim Mount Joy Road) west approx. 5 mi. to Breneman Road. Turn right onto Breneman Road past Landis Brothers to 2nd Farm on left. From Rte. 283 exit onto Rte. 772 East to 1st road left. Breneman Road past Landis Brothers to 2nd farm on left.

John Deere 2940

Diesel; 1000 & 540 PTO; 3 pt.; dual hydraulic; 4475 hrs.; 16.9x38 tires;

International 574

w/#2250 IH Loader; 3 pt.; wfe; diesel; 3464 hrs.

Bobcat #773 Skid Loader

w/1150 hrs.; Diesel; (2) 1 cubic yd. buckets; Zimmerman Balefork

New Holland #195 Manure Spreader, tandem axle, 2 beater, w/hyd. Tailgate, **John Deere #4200 4x18"** rollover plow; John Deere Bwf 12' 32 disc transport disc harrow; International #45 Vibra shank field cultivator, 14'6", w/clod buster; 16' Brillion cultipacker; John Deere F-125 3x16" plow, 3 pt., McCurdy 275 bu. Bin Wagon; **New Holland #492 9' haybine**; **H&S 12 Wheel Bi-Fold rake**; Pequea 9' PTO hay tedder; 18' Hoover bale wagon; 16' Hoover bale wagon; Zimmerman 3 pt. Bale fork; (5) John Deere suitcase weights, 16.9x28 tractor tire chains; 1000 gal. skid fuel tank w/electric pump; 275 gal. skid fuel tank; 2 wheel wooden stock trailer; Kemin hay pre-serve applicator; AFS hammermill on stand, 2 yrs old; 6"x9" auger

Milking & Barn Equipment

(4) Boumatic Flo-Star milker units w/pulsators; Mueller plate cooler; Milker parts; (2) SS milk strainers; (6) milk cans, Ritchie 2 hole energy free water fountain, Ritche SS calf water fountain; 300 gallon water tub; (4) Schaefer 24" barn fans, (1) Schaefer 36" barn fan, assorted barn gates; (2) cast iron water troughs, 10' and 14'; Round Bale hay feeder; 16' mirror fount feed trough, (7) wooden calf hutches; (2) fiberglass calf hutches; (2) fiberglass foot baths; (2) fiberglass feed carts, (2) fiberglass wheelbarrows, moisture tester, fully loaded bolt bin; Captivator fence charger; fence chargers; shovels; forks; brooms; misc. hand & farm tools; approx. 1 wagon load of farm items.

1987 Ford F-250 Pickup

4WD, Automatic, PS, 88,000 Miles

Also Selling for Dale Zuck of Penryn

John Deere 4020, Diesel, wfe, 3 pt.; **Oliver 770 w/3 pt., gas, new rear tires**; **John Deere #1209 9' Mower Conditioner**; **John Deere 16 disc grain drill**; **Athens #83 12' transport dic harrow**; **Brillion 12' cultipacker**; **Oliver #346 4 bottom hyd. reset plow, 3 pt.**; **John Deere #1600 10 tooth chisel plow, 3 pt.**; **12' field cultivator w/leveler, 3 pt.**; **175 bu. McCurdy bin wagon**; **200 gal. field sprayer, 3 pt.**
Case 1830 Skid Loader w/2 buckets

Terms: Cash or Good Check Day of Auction. Out of State Buyers must have bank letter of guarantee, addressed to auction company, to buy with check.

Auction Conducted by:
John D. Stauffer Auctioneers
AU-1509-L
Phone 717-665-5099
Manheim, PA 17545

Auction For:
David R. & Shawn K. Wenger
Phone 717-653-1350



HARRY'S AUCTION

Phone: (717) 656-2436

11 Graybill Rd. Leola, Pa. 17540

TWO MARCH TOY AUCTIONS

Held at the Bareville Fire Hall,
211 E. Main St. Leola, Pa.

6 miles east of Lancaster along Rt. 23
(Lancaster County)

We will be starting to disperse a large 550 pc Winross collection to include many Freight Co's, Fire Co's, & older over the road trucks, (and will be continued in April)

Fri., Mar. 10, 2000---5:15 PM

We will be starting with uncataloged Ertl banks, Beansies & more Then at 5:30 we will be selling Winross Trucks; Nascar 1/24th. cars; First Gear trucks; Older Dinky cars; Approx. 100 Models of Yesteryear cars; Older Hess Trucks, & Lots more.

Fri., Mar. 24, 2000---5:15 PM

We will again start with uncataloged Ertl banks & misc toys Then we will continue selling the Winross collection; Nascar 1/24th. cars; First Gear trucks; Ertl t/t banks; Comic books; Matchbox cars; Models of Yesteryear & more.

If you are either buying or selling Winross trucks, Trains, Nascar, Farm toys or any other vehicular toys please give us a call.

AUCTIONEERS: AU-1906

RANDY STOLTZFUS: (717) 656-8919

RICHARD HARRY: (717) 656-2436

"Horst Auction Center"

PUBLIC SALE

ANTIQUES, HOUSEHOLD GOODS, COLLECTIBLES & TOOLS

Wednesday, March 8, 2000

At 2:00 P.M.

Sale to be held at the Horst Auction Center, located at the corner of Rt. 322 & Durlach Rd. (approx. 2-1/2 miles west of Ephrata), Ephrata, Lancaster Co., PA.

FURNITURE - ANTIQUE DRY SINK; Bucket Bench; Wood Box; Min. Blanket Chest; **ANTIQUE BARBER'S CHAIR**; **OAK - FINE 3 PC. BEDROOM SUITE** (Highback Bed); Cane Rocker & 2 Chairs; Rd. Ext Table (w/Claw Feet), Set of Highback Chairs; Washstand; Lampstands; **KITCHEN CUPBOARD**; 2 Door Cupboard; Comb Rack; High Chair; **SIDE x SIDE DESK/BOOKCASE**; Cedar Chest; Walnut Bedroom Set; Curio Cabinet; Fine Hide-a-Bed; La-Z-Boy, Deco Breakfast Set; Box Springs & Mattresses, Trunk; Child's Rocker.

APPLIANCES - Freezer; Maytag Wringer Washer; Safe; Color TV's; Mod. Grandfathers Clock, **OAK ROLLER ORGAN**; Kerosene Gone w/Wind Lamp; **ANTIQUE CLOCKS**; **LIGHTED ADV. BEER CLOCKS**; Mail Pouch Thermometer; adv Ephemera; Saffron Box; Flat & Sad Irons, Copper Wash Boiler; Brass Bucket; Berry Bucket; Pic Board, Wood Rolling Pins, Planters Peanut Trays, Agate Coffee Pots, Adv Tins

CHINA & GLASSWARE - Youtz 1909 Calendar Plates, Set of Nontake China; Hull Bowls, Roseville, **DECORATED STONEWARE**; Figurines, Carnival Dishes, Ruby Vases; Coke Glasses, Set of Green Bowls, Shakers, Kerosene Lamps, Manheim Bottles

LINENS - ANTIQUE PATCHWORK QUILTS - Wool Coverlet, Counterpane, Columbus Centennial Spread, Army & Navy Blankets; Hankies, Children's Books, Post Cards, Valentines, Watch Fobs, Pocket Knives, Foreign Coins; Adv Lighters, Ephemera, World War 2 Medals, Viewmaster, World War 1 Cards, Cap Pistols, Match Box Cars, Toy Trucks, Marbles; **RAILROAD COLLECTIBLES**; Collection of Dolls, Doll Furniture.

TOOLS - 10" RADIAL ARM SAW; 10" Table Saw; 6" Jointer, Sander; Table Top Shaper; Grinder/Sander; Vise, Turning Lathe; Log Splitter (w/Gas Engine), Hand Miter Box; Alum. Ladders; Drills, Maytag Gas Engine; Hand Tools; Hardware, Wood Tool Box, Turkey Crate; Live Animal Traps; Sleds, Interior Shutters; Broad Axes; Augers, Cobbler's Hammer; Fence Stretcher; Egg Baskets, Straw Cutter; Quoits; Hay Forks; Scout Hatchet, Barking Spud.

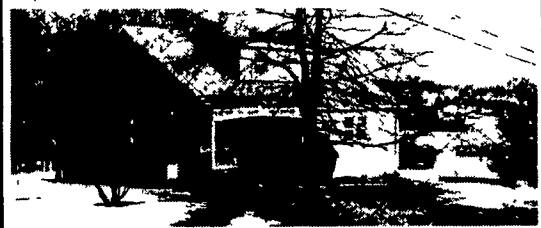
No Out-of-State Checks without prior approval

HORST AUCTS.

T. Glenn (717) 859-1331 • (717) 738-3080
Timothy G. Fax # (717) 738-2132
Thomas A. "VOICES OF EXPERIENCE"

PUBLIC AUCTION VALUABLE REAL ESTATE 1 1/2 STORY DWL. - BARN/GARAGE 2 ACRES w/POND THUR., APR. 6, 2000 1 PM

LOCATION: 566 Fivepointville Rd (Fivepointville) From Terre Hill, Rt 897 North to stop sign in Fivepointville Turn left onto Fivepointville Rd to property on right, Brecknock Twp, Lancaster Co., PA



Real Estate consists of 1-1/2 story 4 bdrm house w/over 1500 sq ft finished area, maintenance free siding & alum clad soffit & fascia & windows Large country kitchen, living rm 1st floor 2 bdrms & full bath 2nd floor 2 bdrms Daylight bsmt w/laundry & sm shop area Oil forced air heat

BARN/GARAGE is detached masonry bldg w/horse stalls, water, elect POND is approx 3/4 acre spring fed pond Public sewer on lot well Los is country 2.2 ACRE TRACT w/over 400' frontage **NOTE:** Ideal rural property, Garden Spot Schs Zoned Residential Low Plenty lawn & garden area & pasture area "PROPERTY MUST BE SOLD" Seller relocating out of state Terms 10% down, balance 60 days Inspection by appointment or open house on Sats, March 18, 25 & April 1 from 1-4 PM For picture brochure, land plotting & financing call auctioneers at 717-445-4309 or 717-733-1006

Terms by **CLIFFORD N. ESTHER R. ZIMMERMAN**

Auction Conducted By
Randal V Kline, Lloyd Kreider,
Roy Good, Jr., Auctioneers
Lic #2116, #499, #513
717-445-4309



PUBLIC AUCTION

DORMAN COMPLETE RETIREMENT FARM DISPERSAL

3 Tractors, Farm Machinery, Dairy Equipment, 2 wagons small items, etc. Century Farm - No sale here for 3 Generations

on farm at LAMAR, PA 3 miles W of Mill Hall, Pa. 1/2 miles N. of Rt. 80. Watch for Auction Arrows off Rt. 80 at Exit 25 (Clinton County)

FRIDAY, MARCH 10, 2000

Starting 10:00 A.M. w/wagon items
3 TRACTORS, COMBINE, TRUCKS, TRAILER, ETC.

JD 4230 diesel wfe tractor, 4 post canopy, 18 4-38" rubber, Quad-range trans, dual hyds 1 owner, JD 4020 diesel wfe tractor, side console-power shift, 18 4-38" rubber, dual hyds, nice, Case 1494 diesel wfe tractor, full cab, dual hyds, 18 4-34" rubber, real clean, JD 4400 combine, full cab, w/443 4 row corn & 213 grain heads, real nice, 74 Ford F-700 truck w/16' dump grain bed, Moritz 14' tandem axle pull behind livestock trailer, 62 Ford F500 12' dump truck w/cattle racks, ETC

GENERAL FARM MACHINERY, ETC.

TILLAGE: Oliver 546 5 btm 16" semi-mounted moldboard plows, spring resets, sidehill hitch, JD 3 pth 10 tooth chisel plow, IH 35 pull type transport 12' field cultivator; 12' transport cultmulcher, AC 12' transport disc

PLANTING: JD 7000 conservation 4 row cornplanter w/monitor, Tye 3 pth 8' No-Till Drill, Walsh 200 gal trailer sprayer

HAYING & CHOPPING: NI 5207 discbine, JD 3940 forage harvester - elec controls w/2 row corn & pickup heads, Gehl 1540 blower-1 owner, 2 Gehl 970 forage wagons, 3 beaters, roof & 12 ton tandem axle gears, both 1 owner & real nice, Gehl BU model self unloading forage wagon, wood sides, nice, JD 335 ROUND BALER, Hyd tie, only used approx 200 bales, 1 owner super nice, JD 336 pto baler w/pan thrower, JD 640 rake w/rubber teeth & dolly wheel, Ford/NH 254 3 pth rake tedder, King-Wyse 30' all-purpose transport elevator, Kewanee 500 34' all-purpose transport elevator, 2-16' wooden thrower rack wagons, etc

MANURE EQUIPMENT: Houle 32' pto manure pump, real nice, VanDale 2000 gal tandem axle liquid tank spreader, Clay 900 gal no pto vacuum tank spreader w/single axle, NH 516 box manure spreader, nice,

OTHER MACHINERY: NI 325 2 row corn picker w/12 roll bed, Mordige pto grain dryer, 2 Kilbros 350 gravity bin wagons on 8 & 10 ton gears, Hesston single axle stacker w/stack mover, Gehl 100 grinder mixer w/electronic digital scales, 14' hyd dump wagon, 15,000 watt pto generator on cart, 6"x34" transport grain auger, 3 pth post hole digger, plus other small items, etc

BUTCHER ITEMS & SMALLS: Enterprise 22 meat grinder on bench, Enterprise lard press, Copper apple butter kettle w/stir, lanterns, barn auger, plus a couple wagon loads small items **DAIRY EQUIPMENT:** Milking systems for Dbl 4 parlor including, pipeline, weight jars, 4 units, washer, sells complete, you take it out Universal VP76 vacuum pump, Universal fresh cow pail, etc **SELLING FOR NEIGHBOR AFTERWARDS:** Fox 3000 chopper w/2 heads including 3RN corn, NH 271 square baler, Haybuster 1068 grain drill w/2 small seed boxes, NH 495 haybine,

AUCTIONEER NOTE: This is a Century Farm, no sale here in 3 generations, George has Nice Machinery & has kept most everything in the shed, see you on the 10th of March.

TERMS: Cash or Good PA Check day of sale. Out of state buyers must have current letter of credit guaranteeing funds addressed to this auction.

Owners,
GEORGE & NORMA DORMAN
(570) 726-3555



1515 Kepner Hill Road, Muncy, PA 17756
PA Lic. #RY 71L
(570) 546-6907