

S PUBLIC AUCTION

OF VALUABLE

Tractors & Farm Equipment
SAT., MARCH 11, 2000
Auction Time: 9:00 A.M.

LOCATION: 175 N. Cornwall Road, Lebanon, PA. From Lebanon follow Rte 72 S to Rocherty Road Turn west on Rocherty Rd. 4/10 mi to N. Cornwall Road Turn left onto N Cornwall Road 3/10 mi to 3rd property on right

John Deere 3020 Diesel, WFE, 3 pt, Wghts
Farmall 460 w/Fast Hitch
Farmall M Farmall H, 1 Owner
International #203 Combine w/13' Humereel

IH #5500 7-Tooth Chisel Plow, 3 pt.; **IH #700 4x16"** Spring Reset Plow, 3 pt., **Brillion 10' Cultivator**, **IH 10'** Transport Discharge, **Bush Hog 10' Offset Transport Disc** Harrow, **John Deere #494 4-Row Cornplanter**, (3) **Ontario** Grain Drills, **John Deere #555 3 Bottom Trailer Plow**, **Rotary Hoe**, 4 Section; **IH 3 Bottom Fast Hitch Plow**, (2) **Spring Harrows**, **New Holland Super 68 Baler**, **New Holland #256 Rake w/Rubber Teeth**; **New Holland #469 Haybine 9'**, (3) **16' Flatbed Wagons**, **Zimmerman 28' Elevator w/Corn Chute**, **IH 7' Sickle Bar Mower**, **Pitmanless**, **New Holland #717 Forage Harvester**, **1 Row Corn Head**, **Badger PTO Forage Wagon w/2 Beaters**, **New Holland #22 Table Blower**, **Belt**; **New Idea 2 Row Mounted Corn Picker**, **Farmall M Mounts**, (2) **Smoker Bin Wagons**; **King Wyse Drag Elevator**, **Holland 1 Row Transplanter w/Water Tank**; **2 Row Cultivator for H or M**; **Horn Loader for Farmall H or M**, **Farmall Hillside Hitch**; **Farmall Tractor Fenders**; **Clod Buster**, **New Idea #351 Manure Spreader**, needs repair; **John Deere Flail Chopper** for parts, **16' Harvest Handler Elevator**, **John Deere 10A Hammermill**; **John Deere PTO Transport Corn Sheller**; **Silo Pipe**; (2) **Fuel Tanks**, **Hahn 8 hp Riding Mower**;

1954 Ford 14' Stake Bed Truck

1967 Chevy Pickup, as is; **Lawn Mowers**, **Oil Drums**; **Gates**, **Fence Posts**, **Rope**; (20) **Milk Cans**, **Baskets**, **Tractor Tire Chains**; **Air Compressor**, **Platform Scale**; **Hog Trough**, **Buch Water Trough**; **Fence Charger**, **Hyd Cylinders**, (18) **Bags Barn Dri**; **Ext. Ladder**; **56' Wooden Hay Rack**, **2-Prong Fork**; **Wooden Shingles**, **Used Lumber**, **Log Chains**; **Grain Cradle**, **Space Heater**; **Plastic Pipe 1" & 1-1/2"**; **Wooden Pulleys**; **Crock Waterer**, **Wheelbarrow**; **Shovels**, **Digging Iron**; **Sledge Hammers**; **Saw**; (2) **DeLaval Milk Units**; **SS Milk Bucket**; **SS Strainer**, **SS Wash Tub**, **Feed Cart**, **Feed Bags**; **Fly Sprayer**; **Cow Chains**, **Blue Canning Jars**, **Qt & 2 Qts**; (3) **Crocks**, **Hay Hook**; **Misc. Tools**, **Approx. 2 Wagon Loads of Useful Farm Items & Tools**

Approx. 20 Ton Grass Hay

TERMS: Cash or Good Check day of Auction. No out of state checks without bank letter of Guarantee

Auction For
VERNA BRUBAKER
(Mrs. Eugene Brubaker)

Auction conducted by
JOHN D. STAUFFER
AU-1509-L
Phone 717-665-5099
Manheim, Pa 17545

Auctioneers

Food By Midway Women's Fellowship

Public Auction Register

Closing Date Monday 5:00 P.M.

of each week's publication

Internet Sale Register will be updated every Sat. at 2:23 P.M.

ATTENTION Auctioneers

All sales register info needs complete address, street, town, county & state.

SAT MAR 18-9 30AM JD Tractors, farm equip, 6620 JD combine & trucks, 1 mile N of Elmer, NJ on Main St for Ward Bishop By Blaine Rentzel Auctions

SAT MAR 18-9 30AM Farm machinery for Fairview Acres, Stoystown, Pa Somerset Co Cecil & Lynn Lohr, owners Luce

Aucts

SAT MAR 18 - 9 30AM Antique clocks, tools, etc at the Cabbage Corner Restaurant, Rt 45 W Mifflinburg, Pa Robert L Hoover, Jacqueline L Hoover, owners Kenneth E Smith, Dennis Hasinger, aucts

SAT MAR 18 - 9 30AM Farm

machinery & farm real estate sale Huntingdon Co Shade Gap, Pa John and Helen Middaugh Kings Auctions, Inc 717-789-3883

SAT MAR 18- 10AM Vegetable Farm Auction, tractors, truck, packing house, field & irrigation equip 841 Jacksonville Rd, Mt Holly, NJ Allen's Auct Service

SAT MAR 18- 10AM Farm Consignment Sale, 1817 Barclay Rd, Barclay, Elborn Aucts

SAT MAR 18 - 10AM Henry J Moser Estate Auction Tractors, Farm Machinery, Furniture, Antiques, HH Goods JG Cochran, Auct

SAT MAR 18 - 10AM Antiques, HH Goods, Furniture, Player Piano, Toys, Books, Glassware, China at Al Starr Firemen's Bldg, Willow Street, PA Howard E Shaub, Inc Auct

SAT MAR 18 - 10AM Farm Toy Auction, Romberger & Associates Elizabethville Banquet Center, 290 W Broad St, Eliza-

Lancaster Farming, Saturday, March 4, 2000-B43

bethville, Pa Ronald Schultz, Jr., owner

SAT MAR 18 - 10AM Farm Toy Auction at Elizabethville Banquet Center, 290 W Broad St, Elizabethville, Pa Ronald Schultz, Jr Owner By Romberger & Assoc

SAT MAR 18 - 10 30AM Complete Farm Equipment Dispersal - Eastern View Farm, Midland, VA By Ownby Auction & Realty Co., Inc

SAT MAR 18 - 11AM Straff Rd, Campbell (Steuben Co.) New York Gauss Farm Disersal of Dairy Cattle, Machinery and Silage Pirrung Aucts, Inc

SAT, MAR 18 - 11AM For Casey Systems, 151 Holland Rd, Sussex, NJ, Farm machinery auction Col FR Daniel Aucts, Inc 908-369-4784

SAT, MAR 18 - 12 30PM Farm Equip, Tools, Household Items, Jeep, Ford Pickup at Mechanic-

stown Rd, Emmitsburg, MD Jay C Long Estate By Robert Meunier, Auct

SAT MAR 18 - 1PM Real estate, Lanc Co West Earl Twp By Edwina Weaver Gingrich & Hoover, aucts

MON MAR 20 - Annual Consignment Auction for tractors combines, farm equipment Auction By M M Weaver & Sons, 169 North Groffdale Road, Leola Aalron E Martin, Auction Service

MON MAR 20 - 9AM Taneytown Farm Equipment 9th Annual Spring Sale Rt 194 & Brown Rd, Taneytown, Md Wam Walters, Edgar Bohrer, Tony Quarrick, aucts

MON MAR 20 - 9AM Tractors, trucks & farm equip, at 499 Fish & Game Rd, East Berlin, Pa for Mildren Sauble by Blaine Rentzel Auction Service 717-764-6412

TUES, MAR 21 - 9AM Quilt Craft & Buggy To be held at A&C Diffebach Auction Inc, 100 W Jackson St, New Holland Lanc Co, Pa 717-355-7253

TUES, MAR 21 - Fat Cattle Sale, Carlisle Lvestock Market, Inc, 548 Alexander Spring Road, Carlisle, PA

TUES MAR 21 - 10AM Fert Equip & Truck auction Excess Equip Tarboro, North Carolina Del Peterson & Assoc, aucts

WTUES MAR 21 - 10 30AM Farm equip for David & Shawn Wenger, 532 Brennenman Rd, Manheim, Pa John D Stauffer, Auct

TUES MAR 21 - 11AM Havens Corners Rd, Pen Yan (Yates o) NY Sensenig Dairy Herd and Farm Machinery Auction, Pirrung Aucts

TUES, MAR 21 - 7 45PM Feeder Cattle Sale Carlisle Lvestock Market, Inc 548 Alexander Spring Rd, Carlisle, PA

WED, MAR 22 - 9AM Farm Equip, Tractors, Truck Lots To be held at Wolgemuth Auction, 109 N Maple Ave, Leola, Lanc Co, Pa 717-656-2947

WED, MAR 22 - 9 AM Quilt & Craft To be held at A&C Diffebach Auction Inc, 100 W Jackson St, New Holland, Lanc Co, Pa 717-355-7253

WED MAR 22 - 2PM Antiques, Household goods, collectibles Held at the Horst Auction enter, Ephrata, Lanc Co, Pa Horst Aucts

THURS MAR 23 - Farm mach & tractors, beef cows 321 E Petersburg Rd, Neffsville, Galen Hoover, Elizabeth Hoover Kline, Kreider & Good, aucts

THURS MAR 23 - 146 Ac Farm, Farm Equip & Supplies Long Rd, East Hempfield Twp, Lanc Co, PA Terms By Genex/CRI Robert Martin, Aucts

THURS MAR 23 - 10AM 34 Koeng Rd, Bemville, Berks Co, Pa Farm Equip, JD Tractors, Combine & Harvester Sale for Lavem Koening Les Longenecker, Auct

THURS MAR 23 - 4 30 PM 25th Annual Farmersville Fire Co Community Sale

ANNUAL "SPRING CONSIGNMENT" AUCTION

TRACTORS * FARM EQUIPMENT * TRUCKS * LUMBER * TOOLS

MON., MARCH 13, 2000
9:00 AM (rain or shine)

Located at the A. Curtis Andrew Auction facility in American Corner, MD off of Auction Rd., 7 miles north of Federalsburg, MD, 10 miles south of Denton, MD, between Rt. 313 & Rt. 16.

Accepting equipment consignments on Tues., March 7 thru Sunday, March 12. For more information or to advertise your equipment, contact the auction company.

Early Listings: 1992 Stoll 16' Stock Trailer w/Divider Gate; A.C.-B Tractor w/Cultivators & Disk; 7' Transport Truck; 10' Crowsfoot Cultivator; 1998 Chandler 16' Litter Spreader w/Lime Chain; Int. 510 6 Bottom Plow; Unverferth 25' Rolling Harrow; J.D. 38 STX Lawn Mower; J.D. 317 Lawn Mower; J.D. 750 w/Belly Mower; Case 1835 B Skid Loader; J.D. 600 AMT; Cub 154 Lo-Boy; N.H. 258 Rake; Ford 8N; Ford 1510 4x4 w/Loader; Int. #55 Chisel Plow 13'; Onan P.T.O. Generator.

TERMS: Cash or approved check with current letter from your bank guaranteeing funds, unless you are known by the auctioneer.

A. CURTIS ANDREW AUCTION, INC.
Auctioneers: Curtis Andrew - Mike Roe, CAI
410-754-8826 or 410-479-0756

PUBLIC AUCTION

VALUABLE REAL ESTATE

10.8 ACRE FARMETTE

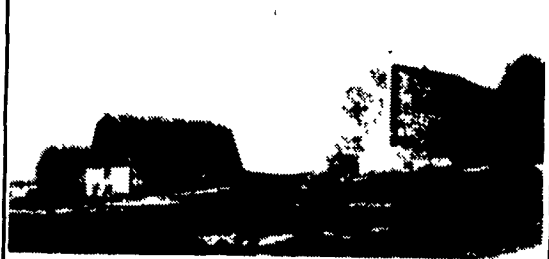
4 BDRM. DWL. - BANK BARN

EQUIP. BLDG.

TUES., APRIL 4

4 PM

LOCATION: 1727 Bowmansville Rd Take Rt 625 N thru Bowmansville approx 2-1/2 miles, turn left on E Bowmansville Rd short distance, turn right Bowmansville Rd to property on left Brecknock Twp, Lanc Co



Real Estate consists of "one owner" 2-1/2 story frame w/alum siding dwelling w/over 2040 SF area, country eat-in kitchen w/adjoining family rm, living rm, sewing rm, full bath & 4 large bdrms, full attic & bsmt storage, oil forced air heat Barn: 24'x42' bank type, masonry & frame steel sided barn w/3 horse stalls, 2nd floor storage, water & electric Equip. Bldg. 2 story frame w/steel siding bldg 32'x46' w/large overhead door, electric & 2nd floor storage Land consists of level to slightly rolling **10.8 ACRES** with approx 6 acres tillable, balance pasture Approx 445' frontage **NOTE:** Sellers are relocating out of state This is a "One Owner" property All buildings are low maintenance Ideal rural location with varied potential use Inspection by appointment or Open House Sats, March 11, 18 & 25 from 1 to 4 pm For land plotting, brochure, financing call Auctioneers (717) 733-1006 Terms 10% down, balance on or before May 30, 2000

IVAN S. & MARY S. BRUBAKER
717-445-5640
Atty. Kenneth Howard

Randal V Kline, Lloyd Kreider & Roy Good, Jr., Auctioneers Lic #499, #2116, #513 717-733-1006



PUBLIC AUCTION OF FARM EQUIPMENT

THURSDAY, MARCH 9, 2000 - 11:00 AM

West Cornwall Township - Lebanon County - PA

DIRECTIONS: Auction site is located along Rt. 322 at the intersection of Rt. 419, From PA Turnpike Interchange of Lancaster / Lebanon go North on Rt. 72 to West on Rt. 322 approx. 2 miles to Auction on Right. or 12 miles east of Hershey on Rt. 322



TRACTORS and HEAVY EQUIPMENT:

- John Deere 4440 with cab, Quad Range, 20.8x38 Tires, Equipped with 540 and 1,000 PTO shafts, Hydraulics, 3 Point, Only 3,440 hours, Purchased New around 1983, (Nice Condition)
- John Deere 4430 with cab, Quad Range, 20.8x34 Tires, Equipped with 540 and 1,000 PTO shafts, Hydraulics, 3 Point, 6,346 hours, has set of dual wheels. (Nice Condition)
- Allis Chalmers D15
- Ford Jubilee
- John Deere 8820 Titan II Combine with cab, AC, Hydro with Harvest Track with 4,431 hours
- John Deere 4400 Combine Diesel with cab, has John Deere 443 Corn Head & 13' Flex Grain Head
- New Holland 1495 Self Propelled Haybine with cab, Diesel and only 689 hours. (Like New)

FARM EQUIPMENT INCLUDES: Bush Hog 12' disc, Allis Chalmers 16' field cultivator, Brillion 12 tooth pull type chisel plow, International 450 - 4 bottom plow w/auto reset, John Deere 7000 - 4 row narrow corn planter, International 510 grain drill, New Holland 892 forage harvester w/2 row corn head & 880 hay pickup 6' head, Gehl 99 forage blower, Dion forage wagon, Artzway forage wagon, New Holland 276 hay baler w/thrower, Pequea 710 hay tedder, David Bradley Rake, Brillion 5' shredder, 2 Kasten self unloading wagons w/hay racks, Hay Wagon w/Cobey running gear, Badger manure pump (like new, only used a few times), New Idea 218 manure spreader, Mayrath 20' grain auger, 32' King Wise hay elevator, Kill Bros 385 gravity bin wagon w/Demco running gear.

MISCELLANEOUS EQUIPMENT: B&W portable grain elevator, McDade hay fan, Saddle Tanks, Silo Pipe.

VEHICLES: 1976 Chevrolet C-65 Grain Truck - 27,500 GVW

AUCTION NOTE: Robert has decided to quit farming and has rented the farm out which makes auction necessary. All equipment is in good condition and has been shed kept. Not many small items, so be prompt. To inspect equipment before Saturday, March 4th, please call Robert for appointment or after March 4th at auction site

TERMS: Cash or Good PA Check / Out of State Buyers must have Bank Letter of Credit Addressed to this Auction

CONDITIONS BY: Robert N. and Delores M. Mumma PHONE # (717) 273-8380

Auction Conducted By:

ROY D. SHIRK, AUCTIONEER
License #AU-003248-L
988 Horseshoe Pike, Lebanon
(717) 867-1119

and

MAYS KURTZ, AUCTIONEER
License #AU-001639-L
261 Horseshoe Pike, Lebanon
(717) 272-4702



DISPERSAL FARM MACHINERY



Friday, March 24, 2000 10:00 A.M.

Auction held for:

JACOB & KATIE LANTZ

3 mile South of Morgantown in Chester County, Pa., 3 mile east of Honey Brook; From Rt. 10 north of Honey Brook go east on Todd Rd. to White School Rd. east to Morgantown Rd. north; from Rt. 23 go south on Mill Rd. straight across mountain to farm; from Pa. Turnpike get off Morgantown exit go south to light turn left, 1st road right Mill Rd.

Address: 875 Morgantown Rd., Honey Brook, Pa.

987 INT. DIESEL - 2290 CASE DIESEL - 990 DAVID BROWN DIESEL - 3 FORAGE WAGONS - N.H. 782 FORAGE HARVESTER

3 DIESEL TRACTORS - FRONT END LOADER

International 986 w/cab 1,000-540 P.T.O.; Case 2290 w/cab 1000-540 P.T.O.; David Brown 990 w/loader sells as a unit.

Auct. Note: Tractors are all in good running condition, well maintained.

HAY AND FORAGE EQUIPMENT

New Holland 782 forage harvester, Model 824 2 row corn head, Model 770 w/grass heads will be offered as single units; New Holland Model 40 forage blower; **New Holland 816 forage wagon - excellent condition**; 2 Dion forage wagons, all have 3 beaters in good condition; Hesston 1130 9 ft. haybine; Pequea tedder; Kuhn hay rake; **New Holland 311 baler in nice condition**; 3 bale wagons; flat bed wagon w/Demco gear; New Holland 30 ft. elevator; Gravity bin wagon.

TILLAGE AND PLANTING EQUIPMENT

John Deere 7000 corn planter, nice condition, 4 row w/dry fertilizer boxes; 3 pt. small grain P.T.O. seeder; Dunham 9 tooth 3 pt. chisel plow; 508 White 4 bottom semi-mounted plow; Dunham 10 ft. cultmulcher; John Deere 215 12 ft. disc harrow, Midwest harrow; 3 pt. 2 row cultivator; **Diller 3000 gal. liquid manure spreader**; Walsh field boom sprayer; 14 ft. J.D. field cultivator.

FARM RELATED EQUIPMENT

Rhino 3 pt. blade; BushHog 5 ft. 3 pt. rotary mower; front loader mount stone picker, 2 bale mowers 2 pt, electric motors 2-5 h.p.; air compressor, P.T.O. hyd pump, **appx. 4 ton Alfalfa hay**; pony cart and harness.

Not a lot of small items come early for machinery; few household goods out of attic. Caloric gas stove Bring proper I.D. to obtain buyer number

Auct Note This is an opportunity to purchase machinery well maintained, shed kept

Auctioneer:
Petersheim Auction Service
Steve, Steve Jr., Orpha Rose
610-593-2828
AU 001349L

