



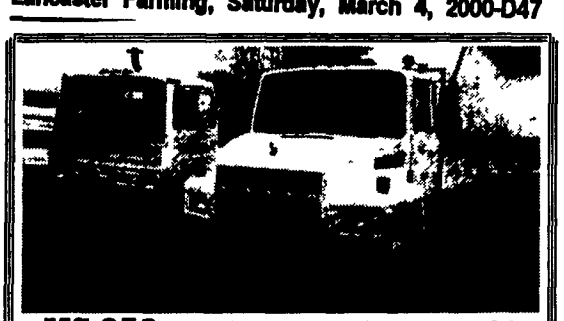
1988 DODGE DAKOTA
5 Sp., 2WD, Long Bed w/Cap
\$2,500
717-284-3111



1977 GMC DUMP
72,000 Miles, 27,000 GVW, Gas Engine,
Hydraulic Brakes, Like New Tires, 10 Ft. Walk
Plow, Controls for Tailgate Spreader
\$3,000 • Phone 717-647-9533

35 TRUCKS AND TRAILERS

(7) 85,000 BTU heaters, hot air, like new \$300/ea
'78 GMC w/refer box, gas, will separate. \$1,000 truck \$1,500 walk-in box, good cond.
215-340-2244



MS 250 93 6 Speed, 22 Ft. Frame, AC \$10,500
CS 250 89 w/Flat Bed 23 Ft. \$12,800
A & Z Custom Services LLC
814-629-9233

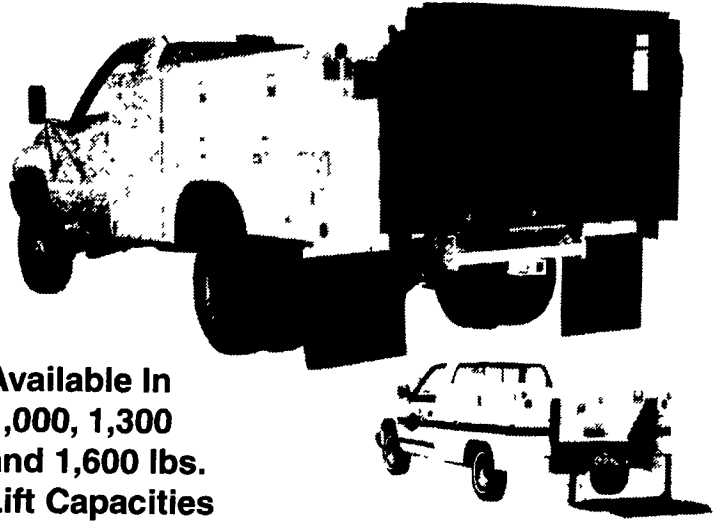
PRE-OWNED CARS PRE-OWNED TRUCKS PRE-OWNED MPV'S

'97 FORD CROWN VICTORIA LX 6,000 Mi, A/OD, 4.6L 8 Cyl, PB, PS, PW, PDL, Cruise, Tilt, AM/FM Cass, A/C, "Leather Interior"	'98 FORD F150 S/C 4x4 XLT 8 ft Bed, 20,000 Mi, A/OD, 8 Cyl, PB, PS, PW, PDL, Cruise, Tilt, AM/FM Cass, A/C, "Off Road Package"	'95 CHEVY BLAZER 4 Dr LT Pkg., 4x4, A/C & Leather
'99 FORD ESCORT ZX2 2 Dr, 2,000 Mi, 5 Spd, 2.0L 4 Cyl, PB, PS, PW, PDL, AM/FM, CD Changer/Cass, A/C, "Keyless Entry"	'96 FORD F150 S/CAB, XLT Conversion, 20,000 Mi, A/OD, 5.0L 8 Cyl, PB, PS, PW, PDL, Cruise, Tilt, AM/FM Cass, A/C, Leather Interior	'96 JEEP CHEROKEE COUNTRY, 4 Dr, 4x4 29,000 Mi, A/OD, 4.0L 6 Cyl, PB, PS, PW, PDL, Cruise, Tilt, AM/FM Cass, A/C, "Keyless Entry"
'94 AUDI 90S SDN. A/OD, 2.8L 6 Cyl, PDL, Cruise, Tilt, AM/FM Cass, Leather Interior, "Electric Sunroof"	'99 FORD F350 S/CAB 4X4 XLT 7,000 Mi, A/OD, 6.8L V-10, PB, PS, PW, PDL, Cruise, Tilt, AM/FM CD/Cass, A/C, "Off Road Package"	'97 FORD AEROSTAR XLT EXT. AWD 22,000 Mi, A/OD, 4.0L 6 Cyl, PB, PS, PW, PDL, Cruise, Tilt, AM/FM Cass, A/C
'98 FORD TAURUS SE Sdn, 17,000 Mi, A/OD, 3.0L 6 Cyl, PB, PS, PW, PDL, Cruise, Tilt, AM/FM Cass, A/C	'97 CHEVY S-10 SUPER CAB V6, A/C, 5 Spd, 1 Owner, 53,000 Miles	'96 FORD EXPLORER 2 Dr, Sport, A/C, A/OD, Cruise, Tilt, PW, PL, Cass
'98 CHEVY CAVALIER 2 Dr, 20,000 Mi, 5 Spd, 4 Cyl, AM/FM Cass, A/C	'95 CHEVY K1500 WORK TRUCK 4x4 38,000 Mi, 5 Spd, 6 Cyl, AM/FM Cass, A/C	'97 FORD EXPEDITION 4x4 Eddie Bauer, 28,000 Mi, A/OD, 5.4L 8 Cyl, PB, PS, PW, PDL, Cruise, Tilt, AM/FM Cass, A/C, "Leather Interior"
'96 OLDS ACHIEVA SL 2 DR CPE 23,000 MI, 5 Spd, 2.4L, 6 Cyl, PDL, Tilt, A/C, AM/FM	'99 FORD F350 S/C XLT, DUALY 4x4 22,000 Mi, 5 Spd, 7.3L Turbo Diesel, 8 Cyl, PB, PS, PW, PDL, Cruise, Tilt, AM/FM Cass, A/C	'98 FORD EXPLORER SPT, 2 Dr 4x4, 22,000 Mi, A/OD, 4.0L 6 Cyl, PB, PS, PW, PDL, Cruise, Tilt, AM/FM CD Player/Cass, A/C
'93 CHEVY LUMINA Z-34 Coupe, V6, A/C, A/OD, Power Equipment	'95 FORD F150 XLT 4x4 5 Spd, 4.9L 6 Cyl, PB, PS, PW, PDL, Cruise, Tilt, AM/FM Cass, A/C	'96 FORD EXPLORER LIMITED 4x4, 4 Dr 61,000 Mi, A/OD, 4.0L 6 Cyl, PB, PS, PW, PDL, Cruise, Tilt, AM/FM CD Player/Cass, A/C, "Leather Interior"
'98 MERCURY TRACER LS 4dr 27,000 mi, A/OD, 4 Cyl, PB, PS, PW, PDL, Cruise, Tilt, AM/FM Cass, A/C	'97 FORD RANGER XLT 4x4, S/CAB 35,000 Mi, A/OD, 4.0L 6 Cyl, AM/FM Cass, A/C	'98 TOYOTA RAV 4 4x4 22,000 Mi, A/OD, 4 Cyl, PB, PS, PW, PDL, Cruise, Tilt, AM/FM CD Player/Cass, A/C, Electric Sunroof

ENGLE-RISSINGER AUTO GROUP

FORD * LINCOLN * MERCURY * JEEP
Midway Between Halifax And Millersburg • 717-896-3421 • 1-800-242-8075
HOURS: Monday-Friday 8:30 AM - 8:30 PM; Saturday 8:30 AM - 3:00 PM

The original
TOMMY GATE
hydraulic lift



Available In
1,000, 1,300
and 1,600 lbs.
Lift Capacities

Sold, Serviced & Installed at

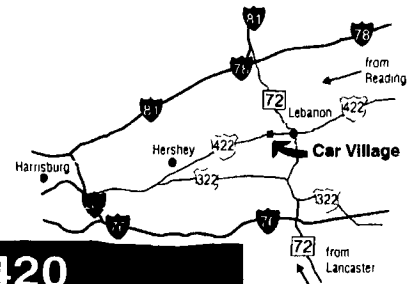
ANNVILLE EQUIPMENT Co.

470 Palmyra Bellgrove Road Anncville, PA 17003
717-867-4631 1-800-233-0520

Business Hours:
Mon.-Fri. 9 to 9;
Sat. 9-4

2300 W.
CUMBERLAND ST.
(Rt. 422)
LEBANON, PA 17042
(Across From
Lebanon Valley Mall)

CAR VILLAGE
HEAVY DUTY TRUCKS



PHONE 717-274-2000 Toll Free 1-800-650-1420



4x4 95 DODGE CLUB CAB 2500
Heavy Duty 3/4 Ton Cummins Turbo Diesel, AT, A/C
Heavy Duty Tow Pkg. 4.10 Limited Slip, Dana Axle,
4 Brand New Tires \$18,900



14 FT. CUBE VAN 96 FORD E-450
Big 14,050 GVW Powerstroke Turbo Diesel, AT, Only
33,000 Miles, Real Clean Tk & Ready To Go To Work



MECHANICS BODY 4 WHEEL DRIVE
96 FORD F250 XL
351 I.I. V8, 5 Spd. Trans, Very Nice Reading Body,
66,000 Miles \$16,900



460 4 DOOR 96 FORD F250 XLT
4 Wheel Drive, Perfect, Only 11,000 Miles, 460 V8, Auto
A/C, Loaded XLT, Aluminum Wheels, Factory Tow Pkg,
A Must See



2 WHEEL DRIVE 93 DODGE CLUB CAB
Heavy Duty, 3/4 Ton Cummins Turbo Diesel, AT, A/C,
Capt. Chairs, Fold Down Gooseneck, Ball & Frame
Mount, Class 3 Hitch



QUAD CAB, 99 DODGE 2500 4X4 ST
Only 7000 Miles, 24 Valve Cummins, Turbo Diesel, AT, A/C,
Cloth Seat, Vinyl Floor, All Doors Open, Tow Pkg,
Remaining New Tk. Warranty, Great Tk., Great Price
\$29,900



5 SP. DIESEL, 93 FORD F350 CREW CAB DUALY
Nice Tk, 67,000 Original Miles, 7.3 Diesel, Loaded XLT,
Chrome Simulators, Heavy Duty Tow Pkg



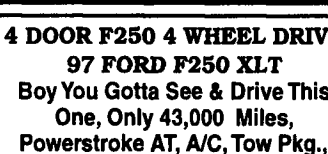
TOW MACHINE 96 DODGE 3500 CLUB CAB
DUALY 4 Wheel Drive, This One Will Pull The Big
Load, Cummins Turbo Diesel, AT, A/C, All Power
Equipment, Heavy Duty Dana Frt. & Rear Axles,
Tow Pkg.



16,000 ORIGINAL MILES 4 WHEEL DRIVE
93 DODGE 350 CLUB CAB DUALY
Like New, Gooseneck & Class 3 Hitch, Cummins Turbo
Diesel, AT, A/C, Capt. Chairs, Tow Mirrors, One Of A Kind



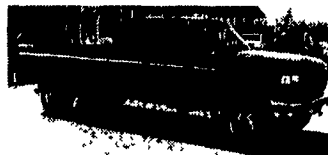
5 SP POWERSTROKE 4 WHEEL DRIVE
96 FORD F250
Heavy Duty Great Tow Machine, A/C, Very Clean &
Runs Strong



4 DOOR F250 4 WHEEL DRIVE
97 FORD F250 XLT
Boy You Gotta See & Drive This
One, Only 43,000 Miles,
Powerstroke AT, A/C, Tow Pkg.,
Loaded, All Options,
Aluminum Wheels



5 SP. GMC - 95 GMC K2500 SIERRA
Heavy Duty 3/4 Ton, High Output 6.5 Turbo Diesel,
5 Spd, A/C, 22,000 Miles, Nice Clean Tk,
Ready For You



NOT FANCY JUST TRUCK 97 FORD F250 4x4
SUPER CAB XL Package, Cloth Seat, Vinyl
Floor, Powerstroke Turbo Diesel, AT, Limited
Slip, 4:10 Gear, Awesome Work Tk. \$21,900



4 WHEEL DRIVE, 96 FORD F250 SUPER CAB
Great Price on a Nice Truck, Powerstroke Turbo
Diesel, AT, A/C, Loaded, XLT, Aluminum Wheels,
Limited Slip Gear, \$23,900



WORK HORSE 98 DODGE 2500 4 WHEEL DRIVE
ST Model Only 15,000 Miles, It's Like New, 24 Valve
Cummins Diesel, AT, A/C, Tow Pkg., Vinyl Floor



DIESEL SUPER CAB 4 WHEEL DRIVE
97 FORD F250 XLT, Super Sharp, Only 30,000 Miles
Remaining New Tk Warranty Powerstroke Diesel, AT,
A/C, 40/20/40 Seat Aluminum Wheels, Tow Pkg



4x4 DUALY GREAT PULLIN MACHINE
95 DODGE 3500
Very Clean Only 47,000 Miles, Cummins Turbo Diesel,
AT, A/C, Tow Pkg, Loaded SLT Laramie



93 F350 CREW CAB DUALY
460 Auto, Fully Equipped, Tu-Tone Paint,
Got To See This One!
\$17,900



GREAT FARM TRUCK 84 FORD F250 4X4
Diesel Power, 4 Spd. Manual Trans, Lock Out Hubs
\$3,900



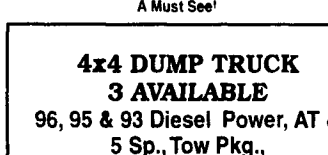
1 TON 4X4 POWERSTROKE
'94-'97 FORD F350 4X4
7.3 Powerstroke Dsl, Auto & 5 Sp., XL & XLT Pkg,
4 Available - Call For Details



CREW CAB DUALY DIESEL
96 FORD F350 CREW CAB DUALY
Powerstroke Diesel, AT, XLT, Aluminum Wheels,
Very Nice, Only 43K Miles



X-CAB 4X4 DIESEL UTILITY
'96 CHEVY K3500 X CAB 4X4 UTILITY
6.5 Turbo Dsl, 5 Spd, Silverado Pkg, Reading Utility
Body with Ladder Racks, Fuel Tank, etc
A Must See!



4x4 DUMP TRUCK
3 AVAILABLE
96, 95 & 93 Diesel Power, AT &
5 Sp., Tow Pkg.,
93 Comes With Boss V Plow



4x4 DIESEL SUPER CAB 93 FORD F250
Nice Truck, Local Trade, Diesel Power, AT, A/C,
Captain Chairs, Console, Tow Pkg,
82,000 Original Miles



5 SP CUMMINS BEAUTIFUL 97 DODGE 2500
4x4, Only 36,000 Card For Miles, Cummins
Diesel, Loaded, SLT Laramie Pkg, 4.10 Limited
Slip Dana Rear