

Woodcrest Motors

SPECIALIZING IN TRUCKS & VANS

1200 North Reading Rd., (Rt. 272) Stevens, (Lancaster Co.) PA 17578

717-336-3130



97 CHEV. VENTURE EXTENDED
V6. AT, A/C
Most Options,
Dk Blue,
60,000 Miles
\$12,700



96 FORD CLUB WAGON XLT
15 Passenger,
5.8 V8, AT,
Dual A/C. Most
Options, 46,000
Miles, Black
\$15,995



98 FORD WINDSTAR
V6, 7 Pass,
Lt Blue,
25,000 Miles
\$14,995



98 CHEV. ASTRO VAN EXTENDED
AWD, 4.3 V6,
AT, Dual Air,
Most Options,
Red Maple,
64,000 Miles
\$14,995



96 FORD WINDSTAR GL
3.8 V6, AT,
Dual A/C,
Quad Seats,
43,000 Miles,
Dk Blue
\$11,900

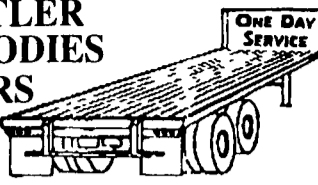


99 DODGE 2500 RAM WAGON
V8, AT, Dual
A/C, 8-Pass,
Most Options,
White,
27,000 Miles
\$18,900

TRAILER FLOORS INSTALLED OAK OR APITONG

HOSTETLER TRUCK BODIES & TRAILERS

(717) 667-3921



Milroy Exit off Rt. 322
Between Lewistown & State College



FOR SALE

1991 - 1992 Fords
350, 7.3 Dsl, 5 Speeds, 14,000 GVW
\$5,200 and \$7,200 OBO

(570) 539-8508

TRUCKERS
27' HD RATCHETS.....\$13.95
WINCH STRAPS.....\$12.95
RUBBER T. STRAPS.....54¢
REFLEXITE RED/WHITE TAPE.....82¢/Ft.
TIRONIE TARPS
(800) 874-2928 • FAX: (570) 584-3127

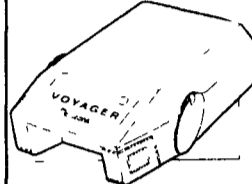
Weaver Distributing Warehouse Direct To Your Door!



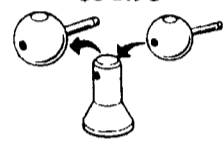
Trailer Hitches
Class 1 thru 5



Brake Controls
\$59.95

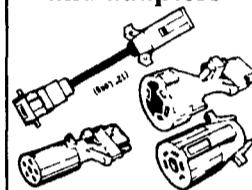


Convert-A-Ball
\$31.95

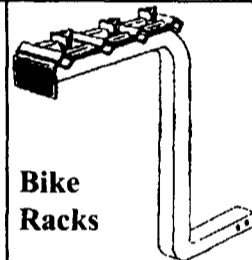
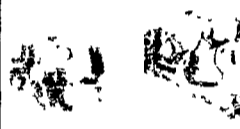


REMOVE BALL-REPLACE WITH DESIRED SIZE

Elec. plugs and adapters



Pintle Hooks and Accessories

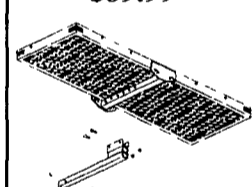


Bike Racks

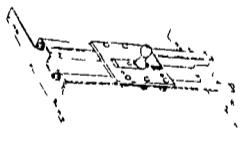
Triple Tow Mounts
Black or Chrome balls



Cargo Carrier
\$89.99



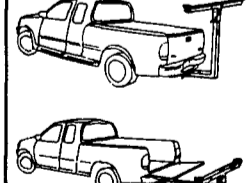
Fold-down Gooseneck Hitch



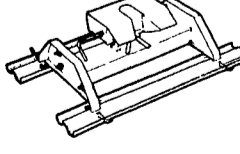
Pop-Up Gooseneck Hitch



Extend-A-Truck
\$99.00



Firehawk 5thwheel Gooseneck Hitch



Adjustable Ballmounts



Free shipping for most orders

Call For a Free Catalog
1-800-932-8373
1-800-WEAVER-D
Weaver Distributing
Rd 2 Box 470
Fredericksburg PA
17026

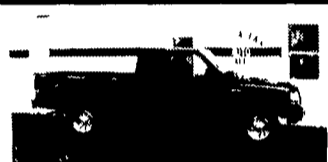


BRUBAKER'S AUTO SALES

PH. 717-866-5237

Hours: Mon.-Fri. 8 a.m.- 9 p.m.; Sat. 8 a.m. - 6 p.m.

ROUTE 422
MYERSTOWN, PA



99 FORD RANGER SPORT 4X4 EXT. CAB, Black V6 5 Sp, AM/FM/CASS, AC, 4 505 Mi
\$15,900



99 FORD F-250 XLT QUAD CAB 4X4, Power Stroke, Black, 6 Sp, AC, PW, PL, CC Tilt AM/FM/CASS/CD, 38 095 Mi
\$29,500



98 FORD F-150 XL 4X4 "OFF-ROAD", Red/Gray, 4.6 V8, 5 Sp, AM/FM/CASS, AC, 49,585 Mi
\$15,900



97 FORD EXPLORER XLT, 4 Dr, AWD, Maroon, V8, AT, AM/FM/CASS, AC, PW, PL, CC, CD Changer, Leather, Sunroof, Pwr Seats, Keyless Entry, 59,090 Mi
\$15,900



96 CHRYSLER TOWN & COUNTRY, 7 Pass Blue 3.8 V6, AT, AM/FM/CASS, PW, PL, CC Tilt, Dual AC, Pwr Seat, Keyless Entry, 63 785 Mi
\$12,900



96 FORD E-350 POWER STROKE CARGO VAN, Orange, AM/FM/ST, AC, 110,870 Mi
\$9,800



95 JEEP WRANGLER SOFTTOP 4X4 RIO GRANDE, Tan, 4 Cyl, 5 Sp, AM/FM/CASS, Tilt, 69,700 Mi
\$9,500



90 CHEVY BEAUVILLE MAXI, 15 Pass, Red/Gray, 350 V8, AT, AM/FM/CASS, AC, PW, PL, CC, Tilt, 67,625 Mi
\$9,600

TRUCKS - UTILITY VEHICLES - TRUCKS



97 FORD F250 SUPER DUTY 4x4, Super Clean, Must See, only 45,000 Miles, WOW. #4424A



97 FORD EXPEDITION "EDDIE BAUER"
All The Toys, Leather,
48,000 Miles, Hurry. #4200A



97 GMC SLE 4x4, 350 AT, Z71 Off Road Pkg., 43K Miles, P4184A, Teal



93 FORD EXPLORER SPORT 4x4, Fully Equipped, only 28,000 Miles, #709A



98 FORD RANGER
Auto, A/C, Cass., Perfect Work Truck,
33,000 Miles, #4295A
FREE TOOL BOX WITH PURCHASE



2000 EXCURSION 7.3 PS
Diesel, Leather Towing Pkg.
#4393A, Green, 2,800 Miles!



96 FORD BRONCO "EDDIE BAUER"
One Of A Kind, Must See,
only \$17,990



97 JEEP CHEROKEE LAREDO 6 Cyl., AT, A/C, Alloy
Wheels, 48,000 Miles, #P4309



97 FORD EXPLORER XLT,
4x4, 4 Door, 6 Cyl., CD Player,
Alloy Wheels, 34K Miles #P4289

CHAPMAN
717-272-7671
Parts Dept. Open Daily 8-5
Sat. 8-12 717-273-8168

FORD LINCOLN MERCURY NISSAN
PART OF THE CHAPMAN AUTO GROUP

LEBANON
20th & Cumberland Sts.
Rt. 422 West
9-9 Daily, 9-5 Sat.