



# HOSTETLER

Truck Bodies & Trailers

717-667-3921

Milroy Exit off Rt. 322  
Between Lewistown & State College



Eby Aluminum Bumper Pull Livestock Trailer, Rubber Torsion Axles 1/2 Slider on Rear, Divider Gate, Escape Door, Spare Wheel & Tire, 6'8" Wide x 16' Long **\$8,395**



Tool Boxes, 36"x18"x18" **\$162**  
24"x18"x18" **\$146** 42"x18"x18" **\$169**  
30"x18"x18" **\$155** 48"x18"x18" **\$178**

## Appalachian Manufacturing, Inc.

330-222-2468



10K Dual Tandem Trailers - Spring Assist Ramps  
Pintle Pull, 18x5, Dovetail ..... **\$4,750**  
Gooseneck, 20x5 ..... **\$5,000**



24' Gooseneck, 4' dovetail, 1-12,000# G.V.W., 6,000# axels w/easy lube, electric brakes, 7.50-16 tires, breakaway kit, ramps w/pressure treated deck, standard ..... 12,000 GVW **\$2,995**  
..... 14,000 GVW **\$3,195**



16' Car Hauler, diamond plate deck with W/D rings, self storing ramps, 7,000# G.V.W., elect. brakes, both axels 82" between wheel wells, breakaway kit incl  
16' Car Trailer **\$1,495** 18' Car Trailer **\$1,645**



21' Low Profile, 10,000#, axel w/easy lube, elect. brakes, pressure treated deck, 10,000# G.V.W.  
gooseneck ..... **\$3,100**  
Bumper pull ..... **\$2,950**

## KEYSTONE TARPS

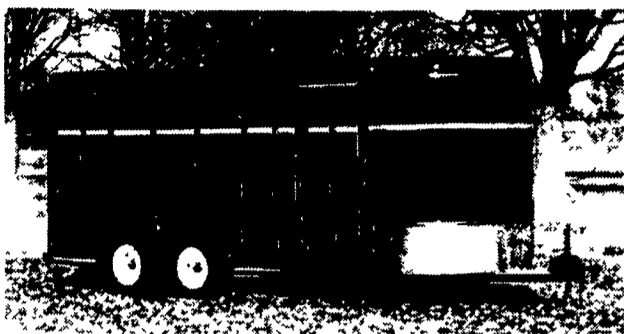
SERVICE & SALES

Is A Manufacturer Of Custom Tarps

- Systems
- Tarps
- Storage Covers
- Load Straps
- Gloves
- Used Railroad Ties

1-800-798-TARP (8277)  
FAX 570-435-0036 570-435-0752

### FEATURE TRAILER



## CORN PRO 3 HORSE SLANT/COMBO TRAILER

Torsion Axles, Dressing Room, 4 Saddle Racks, Halter Hooks, 7' High, 6' Wide, 18' Long, Rubber Bumper

**\$4,530**

## Financing & Leasing Available



Single and Dual Wheel Pick Up Flatbeds, Bulkhead, Coutside Pockets, Rear Skirt, With or Without Gooseneck Compartments  
Starting at **\$825**



1991 Chevy 3500 Cab & Chassis, Long Wheel Base, 454 Gas, Auto Air, New Paint, High Miles, Good Cond  
**\$6,250**

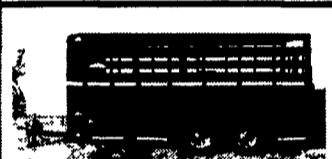
Corn Pro Bumper Pull Livestock Trailer, Corn Pro, Rubber Torsion Axles, Treated Pine Floor  
6 x 16 3500# Axles **\$3,495**  
6'8" Wide x 16 Long 3500# Axles **\$3,725**  
6'8" Wide x 16 Long 6000# Axles **\$4,045**



Moritz Slant Load Bumper Pull Livestock Trailers, Dressing Room, 7' High, Starting at  
2 Horse **\$3,650**  
3 Horse **\$3,950**



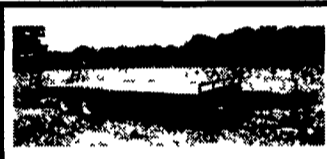
Moritz Skid Loader Trailers, 82" Wide Between Fenders, Rubber Torsion Axles, Treated Pine Floor, 10,000# Drop Leg Jack, Spare Wheel & Tire, Adj Coupler, 10,000 GVW, Available in 7 Colors  
16' Long **\$2,875**  
18' Long **\$3,030**



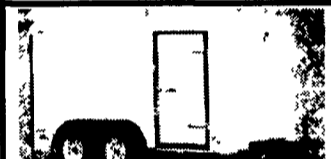
New Design Moritz Livestock Trailers Semi Round Front, New Sides and Rear  
6 x 16' 7000# GVW **\$3,575**  
6'8" x 16' Long 7000# GVW **\$3,775**



Used 9' Eby Cattle Body Attic Over Cab, Rear Ramp Door and Roll Up Door, Slight Damage to Front Corner  
**\$1,200**



18' Deck Over Trailer, 16' Flat 2' Dovetail with 5' Ramps, 10,000 Lg GVW, Adj Coupler  
**\$3,595**



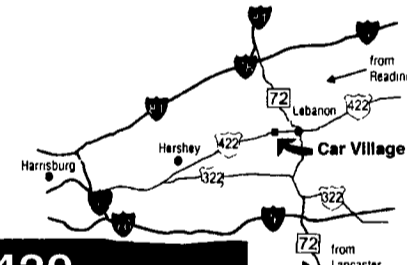
Pace American Enclosed Trailers, Single & Tandem Axle, Side Doors, Double Rear Doors & Ramp Doors  
6'x12' 3000# GVW **\$2,550**  
8'x16' 7000# GVW **\$4,250**

Business Hours:  
Mon.-Fri. 9 to 9;  
Sat. 9-4

2300 W. CUMBERLAND ST.  
(Rt. 422)  
LEBANON, PA 17042  
(Across From Lebanon Valley Mall)

# CAR VILLAGE

HEAVY DUTY TRUCKS



PHONE 717-274-2000 Toll Free 1-800-650-1420



4x4 95 DODGE CLUB CAB 2500 Heavy Duty 3/4 Ton Cummins Turbo Diesel, AT, A/C, Heavy Duty Tow Pkg. 4:10 Limited Slip, Dana Axle, 4 Brand New Tires \$18,900



QUAD CAB, 99 DODGE 2500 4x4 8T Only 7000 Miles, 24 Valve Cummins, Turbo Diesel, AT, A/C, Cloth Seat, Vinyl Floor, All Doors Open, Tow Pkg., Remaining New Tk. Warranty, Great Tk., Great Price \$29,900

16,000 ORIGINAL MILES  
One Of A Kind 4 Wheel Drive  
93 DODGE 350 Club Cab Dually, Cummins Turbo Diesel, AT, A/C, Capt. Chairs, Console, Gooseneck & Class 3 Hitch



DIESEL SUPER CAB 4 WHEEL DRIVE 97 FORD F250 XLT, Super Sharp, Only 30,000 Miles Remaining New Tk Warranty Powerstroke Diesel, AT, A/C, 40/20/40 Seat Aluminum Wheels, Tow Pkg



CREW CAB DUALLY DIESEL 96 FORD F350 CREW CAB DUALLY Powerstroke Diesel, AT, XLT, Aluminum Wheels, Very Nice, Only 43K Miles



FORD CHASSIS CAB - READY TO WORK 2 AVAILABLE 95 F350 & 94 F-Super Duty Diesel Power, 5 Spd. Trans., Long 161 WB, 84" C.A. Call For Details

F350 CREW CABS 4 WHEEL DRIVE 97 & 96 Available Extra Nice, Powerstroke Turbo Diesel, AT, Loaded XLT Tow Pkg, Aluminum Wheels, Remaining New Tk. Warranty



5 SP. GMC - 95 GMC K2500 SIERRA Heavy Duty 3/4 Ton, High Output 6.5 Turbo Diesel, 5 Spd., A/C, 22,000 Miles, Nice Clean Tk., Ready For You

5 SP. DIESEL 93 FORD F350 CREW CAB DUALLY 67,000 Original Miles, 7.3 Diesel, 5 Sp., A/C, Tow Pkg, Loaded XLT, Chrome Simulators

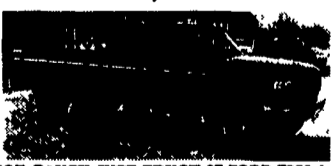


X-CAB 4x4 DIESEL UTILITY 96 CHEVY K3500 X-CAB 4x4 UTILITY 6.5 Turbo Del., 5 Spd., Silverado Pkg., Reading Utility Body with Ladder Racks, Fuel Tank, etc A Must See!

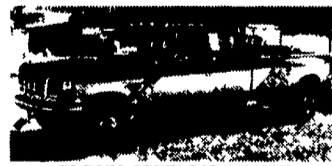
4x4 DIESEL SUPER CAB 93 FORD F250 Nice, Clean, 7.3 Diesel, AT, A/C, Captain Chairs, Console, Excellent Body



TOW MACHINE 98 DODGE 3500 CLUB CAB DUALLY 4 Wheel Drive, This One Will Pull The Big Load, Cummins Turbo Diesel, AT, A/C, All Power Equipment, Heavy Duty Dana Frt. & Rear Axles, Tow Pkg.



NOT FANCY JUST TRUCK 97 FORD F250 4x4 SUPER CAB XL Package, Cloth Seat, Vinyl Floor, Powerstroke Turbo Diesel, AT, Limited Slip, 4:10 Gear, Awesome Work Tk. \$21,900



93 F350 CREW CAB DUALLY 480 Auto, Fully Equipped, Tu-Tone Paint, Got To See This One! \$17,900

4x4 DUMP TRUCK 3 AVAILABLE 96, 95 & 93 Diesel Power, AT & 5 Sp., Tow Pkg., 93 Comes With Boss V Plow



480 4 DOOR 96 FORD F250 XLT 4 Wheel Drive, Perfect, Only 11,000 Miles, 460 V8, Auto A/C, Loaded XLT, Aluminum Wheels, Factory Tow Pkg. A Must See

FLATBED DUMP 94 FORD SUPER DUTY Brand New 12 Ft. Dump, 7.3 Diesel, 5 Sp., Dual Tanks, Heavy 15000 GVW



4 WHEEL DRIVE, 96 FORD F250 SUPER CAB Great Price on a Nice Truck, Powerstroke Turbo Diesel, AT, A/C, Loaded, XLT, Aluminum Wheels, Limited Slip Gear, \$23,900

5 SP. DUALLY 2 WHEEL DRIVE 94 DODGE 3500 Awesome Pulling Machine, Cummins Turbo Diesel, Heavy Duty, 5 Spd., Only 76,000 miles \$15,900



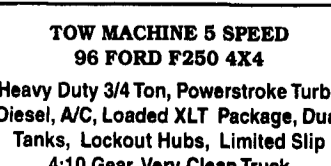
4x4 CHASSIS, 98 CHEVY K3500 4x4 Short Wheelbase Great Gooseneck Hauler, 12,000 GVW, High Output 6.5 Turbo Diesel, 5 Sp., A/C, 4 10 Gear



2 WHEEL DRIVE 93 DODGE CLUB CAB Heavy Duty, 3/4 Ton Cummins Turbo Diesel, AT, A/C, Capt. Chairs, Fold Down Gooseneck, Ball & Frame Mount, Class 3 Hitch



TOW MACHINE 5 SPEED 96 FORD F250 4x4 Heavy Duty 3/4 Ton, Powerstroke Turbo Diesel, A/C, Loaded XLT Package, Dual Tanks, Lockout Hubs, Limited Slip 4:10 Gear, Very Clean Truck Was \$29,900 Now \$22,900



1 TON 4x4 POWERSTROKE 94-97 FORD F350 4x4 7.3 Powerstroke Del. Auto & 5 Sp., XL & XLT Pkg., 4 Available - Call For Details



CREW CAB DUMP TRUCK 90 FORD F350 460, Auto, A/C, 3-Yr Old Dump Body \$8,000



460, Auto, A/C, 3-Yr Old Dump Body \$8,000